

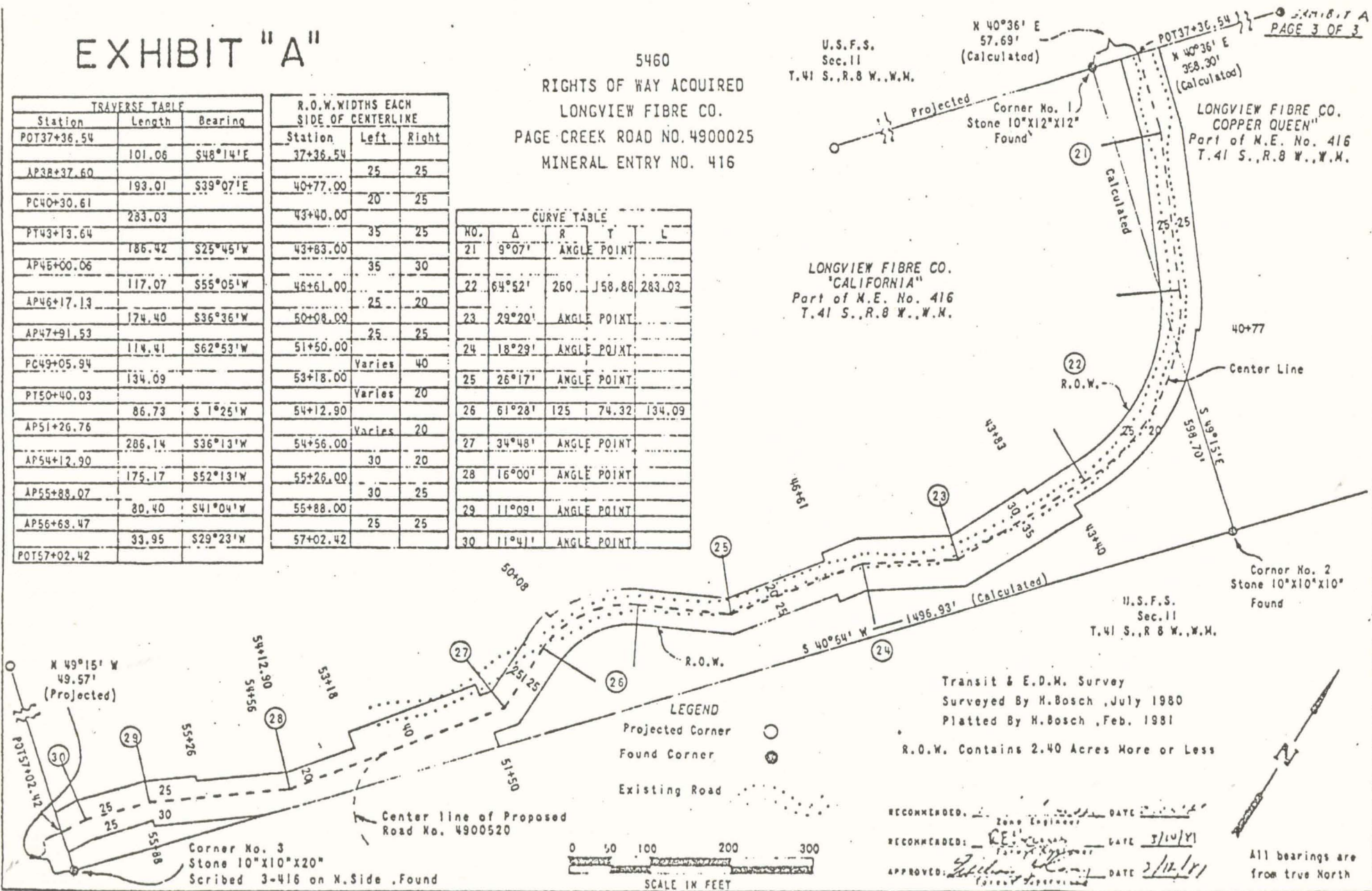
EXHIBIT "A"

5460
 RIGHTS OF WAY ACQUIRED
 LONGVIEW FIBRE CO.
 PAGE CREEK ROAD NO. 4900025
 MINERAL ENTRY NO. 416

| TRAVERSE TABLE | | |
|----------------|--------|----------|
| Station | Length | Bearing |
| POT37+36.54 | | |
| AP38+37.60 | 101.06 | S48°14'E |
| PC40+30.61 | 193.01 | S39°07'E |
| PT43+13.64 | 283.03 | |
| | 186.42 | S25°45'W |
| AP45+00.06 | 117.07 | S55°05'W |
| AP46+17.13 | 174.40 | S36°36'W |
| AP47+91.53 | 114.41 | S62°53'W |
| PC49+05.94 | 134.09 | |
| PT50+40.03 | 86.73 | S1°25'W |
| AP51+26.76 | 286.14 | S36°13'W |
| AP54+12.90 | 175.17 | S52°13'W |
| AP55+88.07 | 80.40 | S41°04'W |
| AP56+68.47 | 33.95 | S29°23'W |
| POT57+02.42 | | |

| R.O.W. WIDTHS EACH SIDE OF CENTERLINE | | |
|---------------------------------------|--------|-------|
| Station | Left | Right |
| 37+36.54 | | |
| | 25 | 25 |
| 40+77.00 | 20 | 25 |
| 43+40.00 | | |
| | 35 | 25 |
| 43+83.00 | | |
| | 35 | 30 |
| 46+61.00 | | |
| | 25 | 20 |
| 50+08.00 | | |
| | 25 | 25 |
| 51+50.00 | | |
| | Varies | 40 |
| 53+18.00 | | |
| | Varies | 20 |
| 54+12.90 | | |
| | Varies | 20 |
| 54+56.00 | | |
| | 30 | 20 |
| 55+26.00 | | |
| | 30 | 25 |
| 55+88.00 | | |
| | 25 | 25 |
| 57+02.42 | | |

| CURVE TABLE | | | | |
|-------------|--------|-----|-------------|--------|
| NO. | Δ | R | T | L |
| 21 | 9°07' | | ANGLE POINT | |
| 22 | 64°52' | 260 | 158.86 | 283.03 |
| 23 | 29°20' | | ANGLE POINT | |
| 24 | 18°29' | | ANGLE POINT | |
| 25 | 26°17' | | ANGLE POINT | |
| 26 | 61°28' | 125 | 74.32 | 134.09 |
| 27 | 34°48' | | ANGLE POINT | |
| 28 | 16°00' | | ANGLE POINT | |
| 29 | 11°09' | | ANGLE POINT | |
| 30 | 11°41' | | ANGLE POINT | |



RECOMMENDED: _____ DATE: _____
 Zone Engineer
 RECOMMENDED: _____ DATE: 3/10/81
 Surveyor
 APPROVED: _____ DATE: 3/12/81
 (Print Name)

R.O.W. Contains 2.40 Acres More or Less

All bearings are from true North

EXHIBIT "A"

U.S.F.S.
NW 1/4, NE 1/4, Sec. 11
T. 41 S., R. 8 W., W.M.

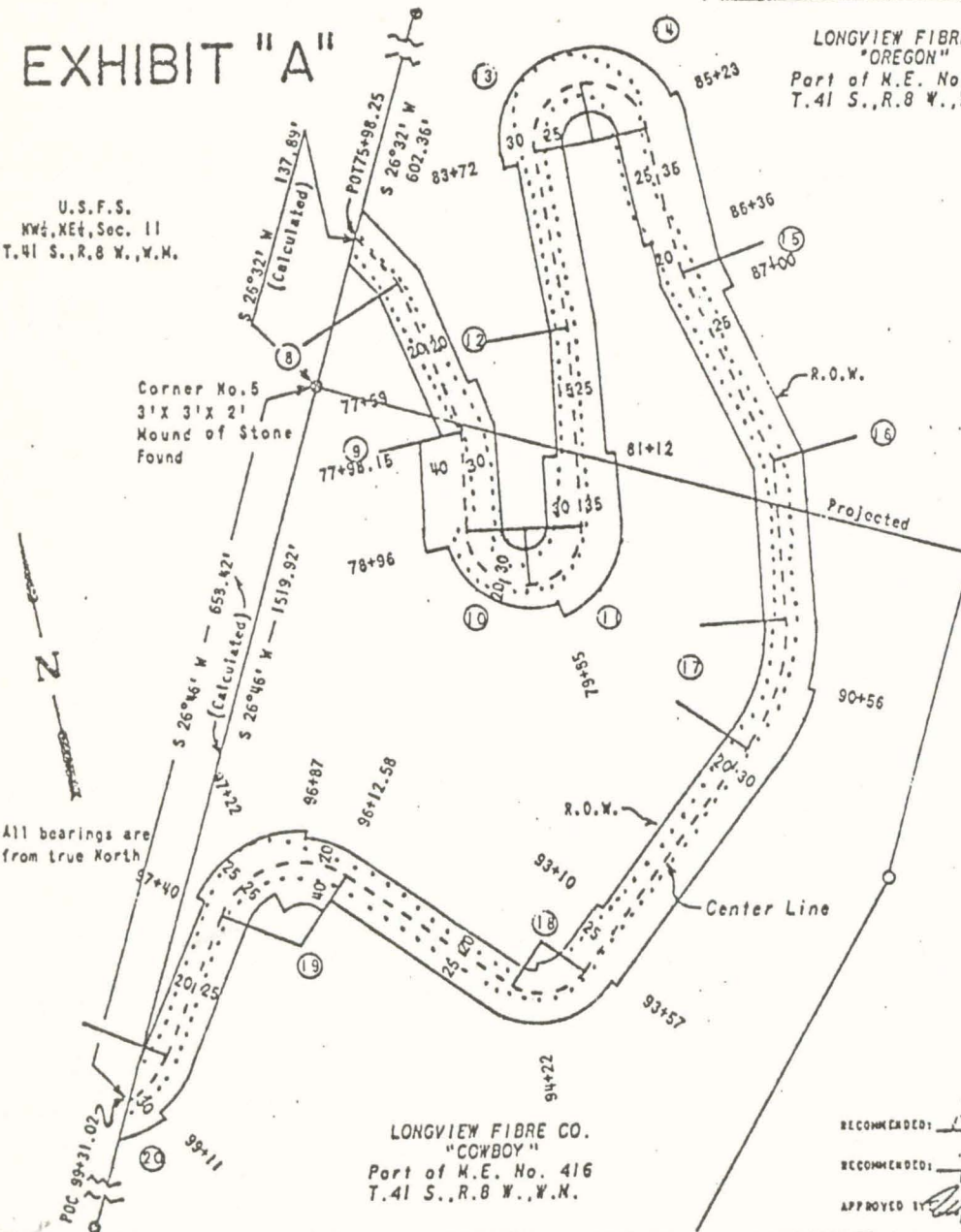
LONGVIEW FIBRE CO.
"OREGON"
Part of M.E. No. 416
T. 41 S., R. 8 W., W.M.

5460
RIGHTS OF WAY ACQUIRED
LONGVIEW FIBRE CO.
PAGE CREEK ROAD NO. 4900025
MINERAL ENTRY NO. 416

EXHIBIT A PAGE 2 OF 3.

Transit & E.D.M. Survey
Surveyed By H. Bosch July 1980
Platted By H. Bosch Feb. 1981

R.O.W. Contains 2.67 Acres More or Less



| CURVE TABLE | | | | |
|-------------|----------|----|-------------|--------|
| NO. | Δ | R | T | L |
| 8 | 18° 51' | | ANGLE POINT | |
| 9 | 21° 19' | | ANGLE POINT | |
| 10 | 92° 34' | 50 | 52.29 | 80.78 |
| 11 | 89° 52' | 50 | 40.88 | 78.42 |
| 12 | 5° 24' | | ANGLE POINT | |
| 13 | 88° 40' | 50 | 48.85 | 77.38 |
| 14 | 87° 10' | 50 | 47.59 | 76.07 |
| 15 | 11° 52' | | ANGLE POINT | |
| 16 | 23° 08' | | ANGLE POINT | |
| 17 | 40° 18' | 75 | 64.21 | 123.09 |
| 18 | 85° 49' | 50 | 47.30 | 75.76 |
| 19 | 101° 42' | 75 | 92.12 | 133.12 |
| 20 | 99° 20' | 75 | 88.33 | 130.03 |

| TRAVERSE TABLE | | | R.O.W. WIDTHS EACH SIDE OF CENTERLINE | |
|----------------|--------|-------------|---------------------------------------|-------|
| Station | Length | Bearing | Station | Width |
| POT75+98.25 | | | 75+98.25 | 20 |
| AP76+53.22 | 54.97 | S30°23' E | 77+59.00 | 20 |
| AP77+98.15 | 44.93 | S11°32' E | 77+98.15 | 30 |
| PC78+06.92 | 86.77 | S 9° 47' W | 78+96.00 | 40 |
| PT78+67.70 | 80.78 | | 79+85.00 | 20 |
| PC79+69.95 | 1.65 | S82°48' E | 79+85.00 | 30 |
| PT80+47.77 | 78.42 | | 81+12.00 | 35 |
| AP82+24.75 | 176.98 | N 7° 20' E | 83+72.00 | 15 |
| PC83+82.02 | 157.27 | N 1° 56' E | 85+23.00 | 30 |
| PT84+59.40 | 77.38 | | 86+36.00 | 35 |
| PC84+59.92 | 0.67 | S89°24' E | 87+00.00 | 20 |
| PT85+36.04 | 76.07 | | 90+56.00 | 25 |
| AP86+69.59 | 133.55 | S 2° 13' E | 93+10.00 | 30 |
| AP88+54.16 | 184.57 | S 14° 06' E | 93+57.00 | 30 |
| PC89+97.98 | 149.82 | S 8° 00' W | 94+22.00 | 25 |
| PT91+21.07 | 123.09 | | 96+12.58 | 25 |
| PC93+64.41 | 243.34 | S 48° 18' W | 96+87.00 | 40 |
| PT94+40.17 | 75.76 | | 97+22.00 | 40 |
| PC96+12.68 | 172.41 | N 44° 52' W | 97+40.00 | 25 |
| PT97+45.70 | 133.12 | | 99+97.17 | 26 |
| PC98+79.21 | 133.51 | S 33° 26' W | 99+11.00 | 30 |
| PC99+31.02 | 51.81 | | 99+31.02 | 30 |

LEGEND
 Projected Corner ○
 Found Corner ●
 Existing Road [Dotted Line]

0 50 100 200 300
 SCALE IN FEET

RECOMMENDED: [Signature] DATE 2/25/81
 RECOMMENDED: [Signature] DATE 3/10/81
 APPROVED BY: [Signature] DATE 3/14/81

LONGVIEW FIBRE CO.
"COWBOY"
Part of M.E. No. 416
T. 41 S., R. 8 W., W.M.

EXHIBIT "A"



5460
 RIGHTS OF WAY ACQUIRED
 LONGVIEW FIBRE CO.
 PAGE CREEK ROAD NO. 4900025
 MINERAL ENTRY NO. 416

EXHIBIT A

PAGE 1 OF 3.



Transit 8 E.D.M. Survey
 Surveyed By H. Bosch July 1980
 Platted By H. Bosch FEB. 1981

R.O.W. Contains 1.50 Acres More or Less

All bearings are from true North
 Starting bearing was determined by magnetic
 compass, with declination set at 20° East.

U.S.F.S.
 SE 1/4, Sec. 2
 T. 41 S., R. 8 W., W.M.

Approximate
 Section Line

U.S.F.S.
 NE 1/4, Sec. 11
 T. 41 S., R. 8 W.,
 W.M.

Corner No. 1
 12" X 12" Stone
 Found

LONGVIEW FIBRE CO.
 "OREGON"

Part of M.E. No. 416
 T. 41 S., R. 8 W., W.M.

RECOMMENDED BY: *[Signature]* DATE: 3/10/81
 RECOMMENDED BY: *[Signature]* DATE: 3/10/81
 APPROVED BY: *[Signature]* DATE: 3/13/81

LONGVIEW FIBRE CO.
 "KELLY"
 Part of M.E. No. 416
 T. 41 S., R. 8 W., W.M.

LEGEND

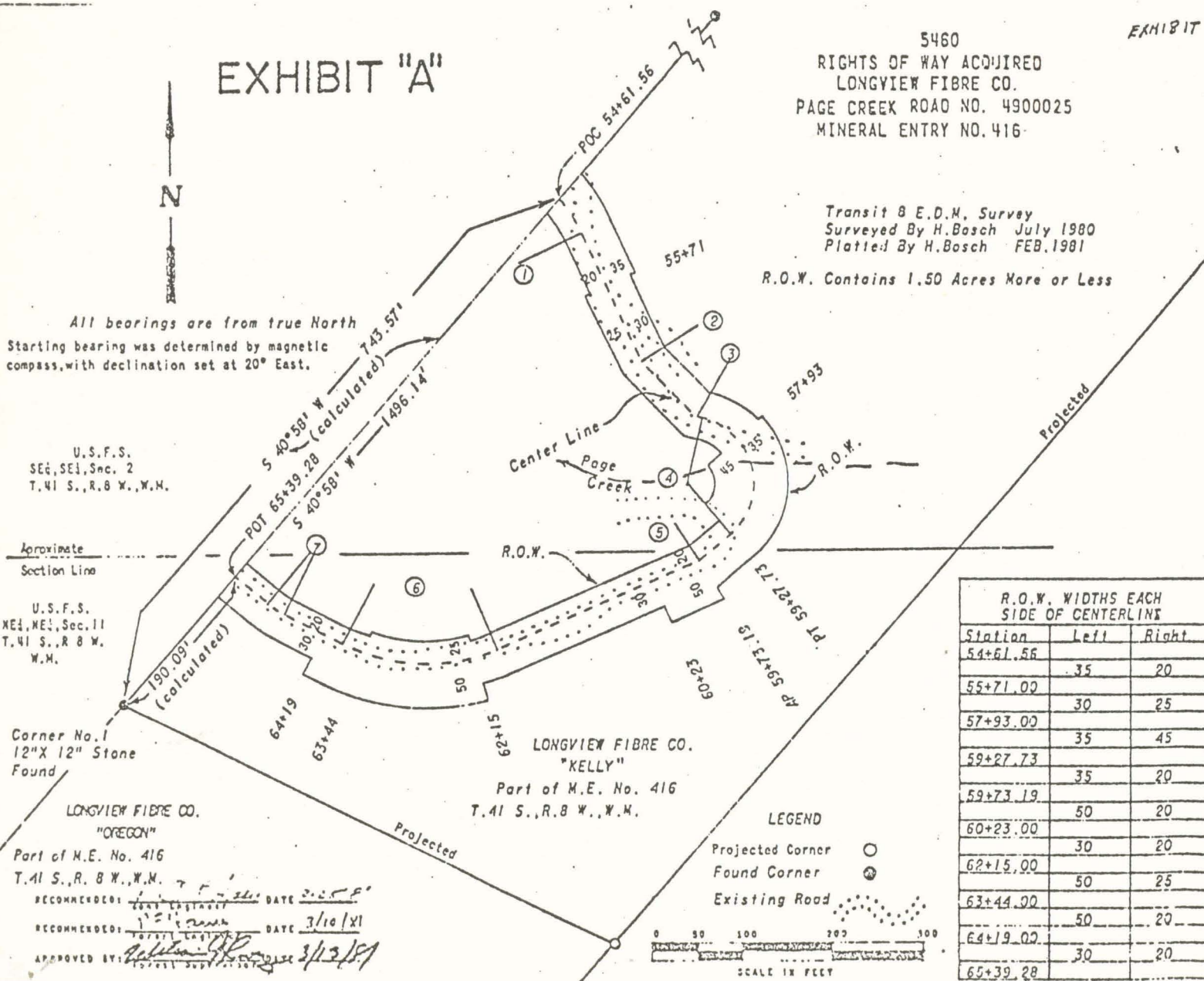
- Projected Corner ○
- Found Corner ⊙
- Existing Road



| CURVE TABLE | | | | |
|-------------|---------|-------------|--------|--------|
| NO. | Δ | R | T | L |
| 1 | 34°04' | 175 | 53.64 | 104.09 |
| 2 | 19°12' | Angle Point | | |
| 3 | 31°19' | Angle Point | | |
| 4 | 124°42' | 75 | 143.16 | 163.23 |
| 5 | 17°31' | Angle Point | | |
| 6 | 50°45' | 200 | 94.06 | 177.14 |
| 7 | 12°37' | 100 | 11.07 | 22.04 |

| TRAVERSE TABLE | | |
|----------------|--------|-----------|
| Station | Length | Bearing |
| POC 54+61.56 | 49.57 | |
| PT 55+11.13 | 157.93 | S24°52' E |
| AP 56+69.11 | 87.69 | S41°04' E |
| AP 57+56.80 | 7.70 | S75°24' E |
| PC 57+64.50 | 163.23 | |
| PT 59+27.73 | 45.45 | S49°18' W |
| AP 59+73.19 | 245.62 | S66°45' W |
| PC 62+18.81 | 177.14 | |
| PT 63+95.95 | 73.43 | N52°26' W |
| PC 64+69.39 | 22.04 | |
| PT 64+91.42 | 47.86 | N49°40' W |
| POT 65+39.28 | | |

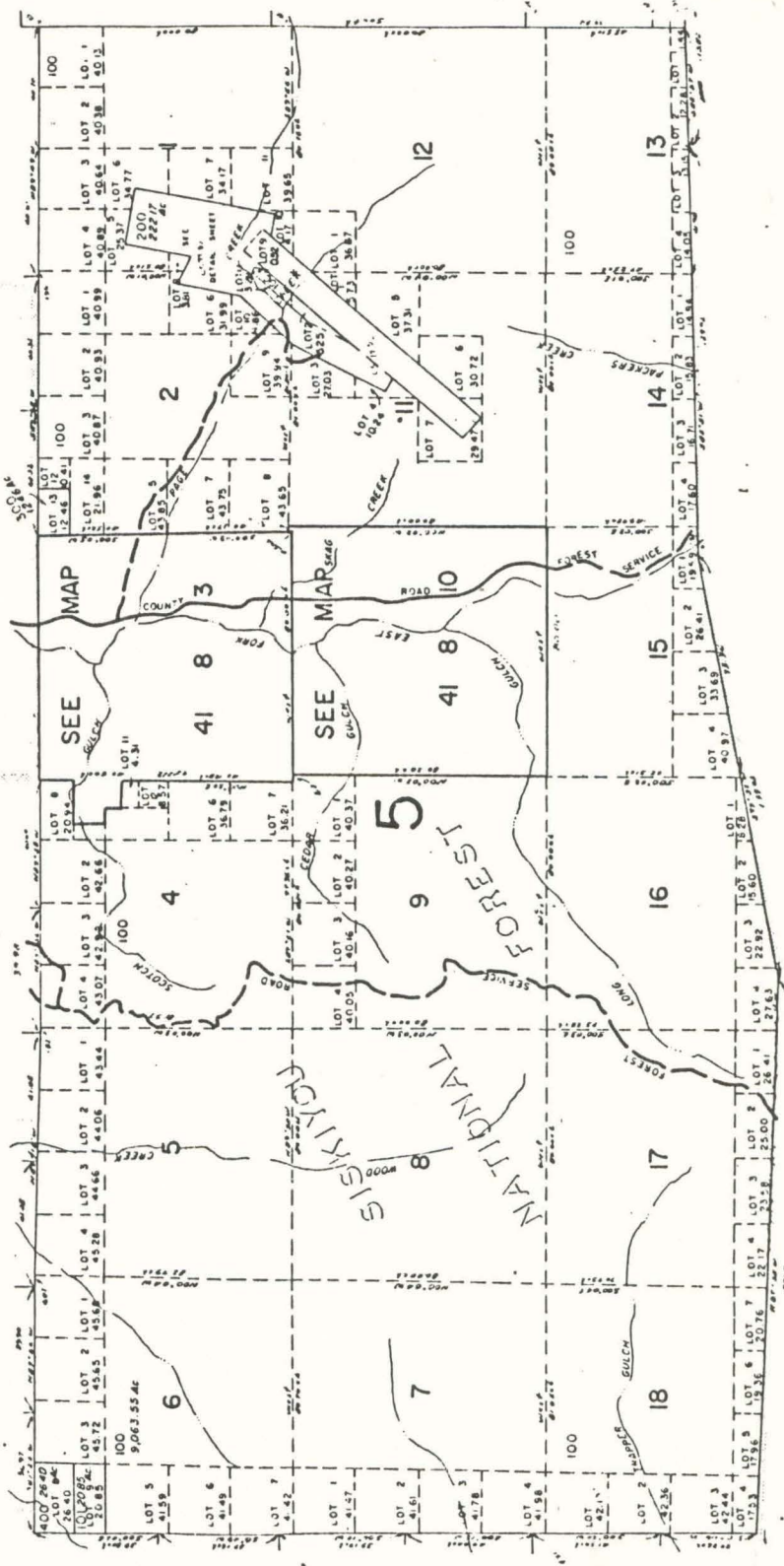
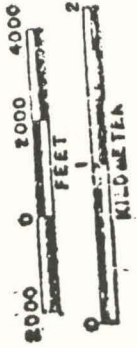
| R.O.W. WIDTHS EACH SIDE OF CENTERLINE | | |
|--|------|-------|
| Station | Left | Right |
| 54+61.56 | | |
| 55+71.00 | 35 | 20 |
| 57+93.00 | 30 | 25 |
| 59+27.73 | 35 | 45 |
| 59+73.19 | 35 | 20 |
| 60+23.00 | 50 | 20 |
| 62+15.00 | 30 | 20 |
| 63+44.00 | 50 | 25 |
| 64+19.00 | 50 | 20 |
| 65+39.28 | 30 | 20 |



1"=2000'

SEE MAP 40 8

SCALE 1:43000



SEE MAP 41 9

SEE MAP 41 7

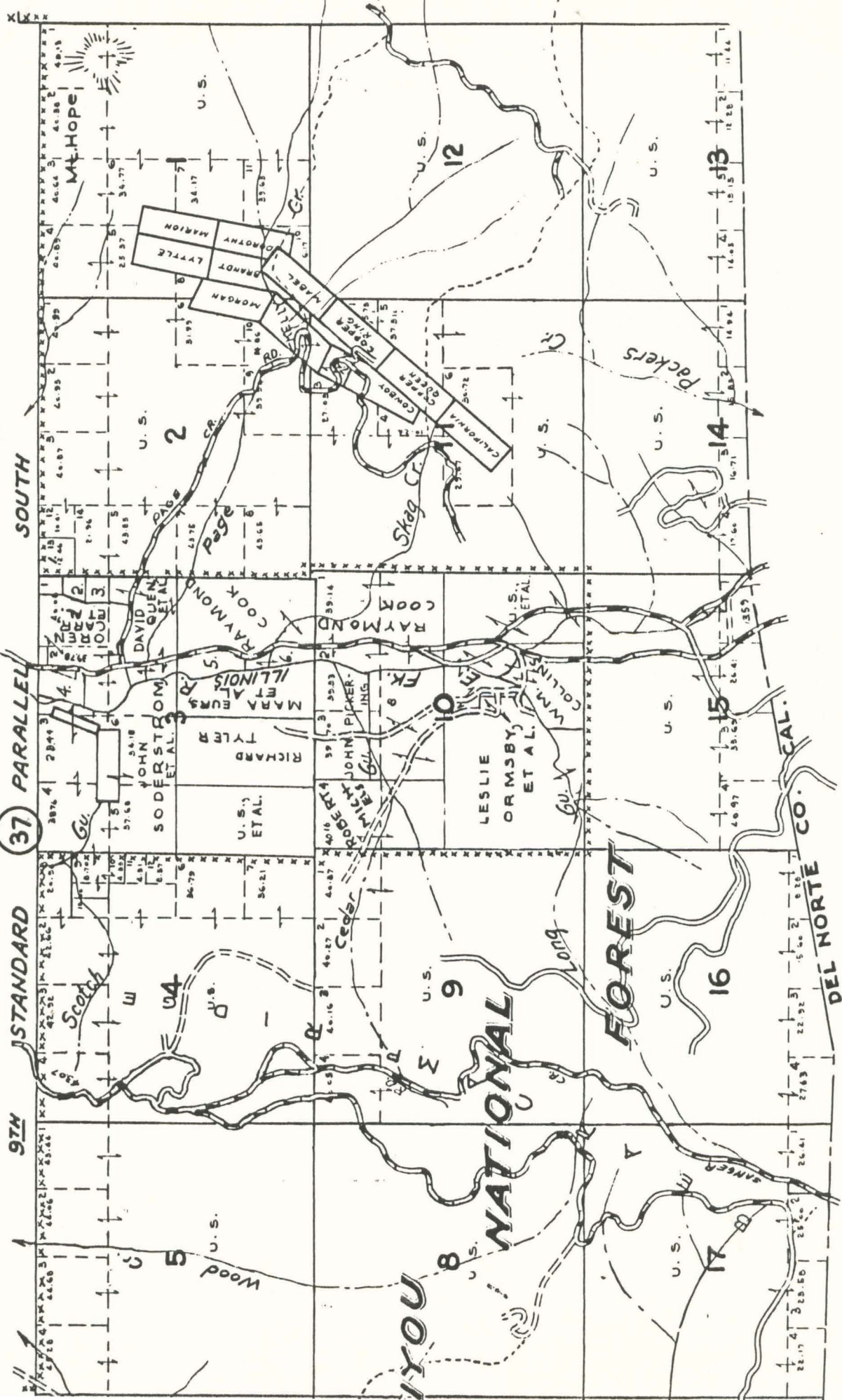
CALIFORNIA

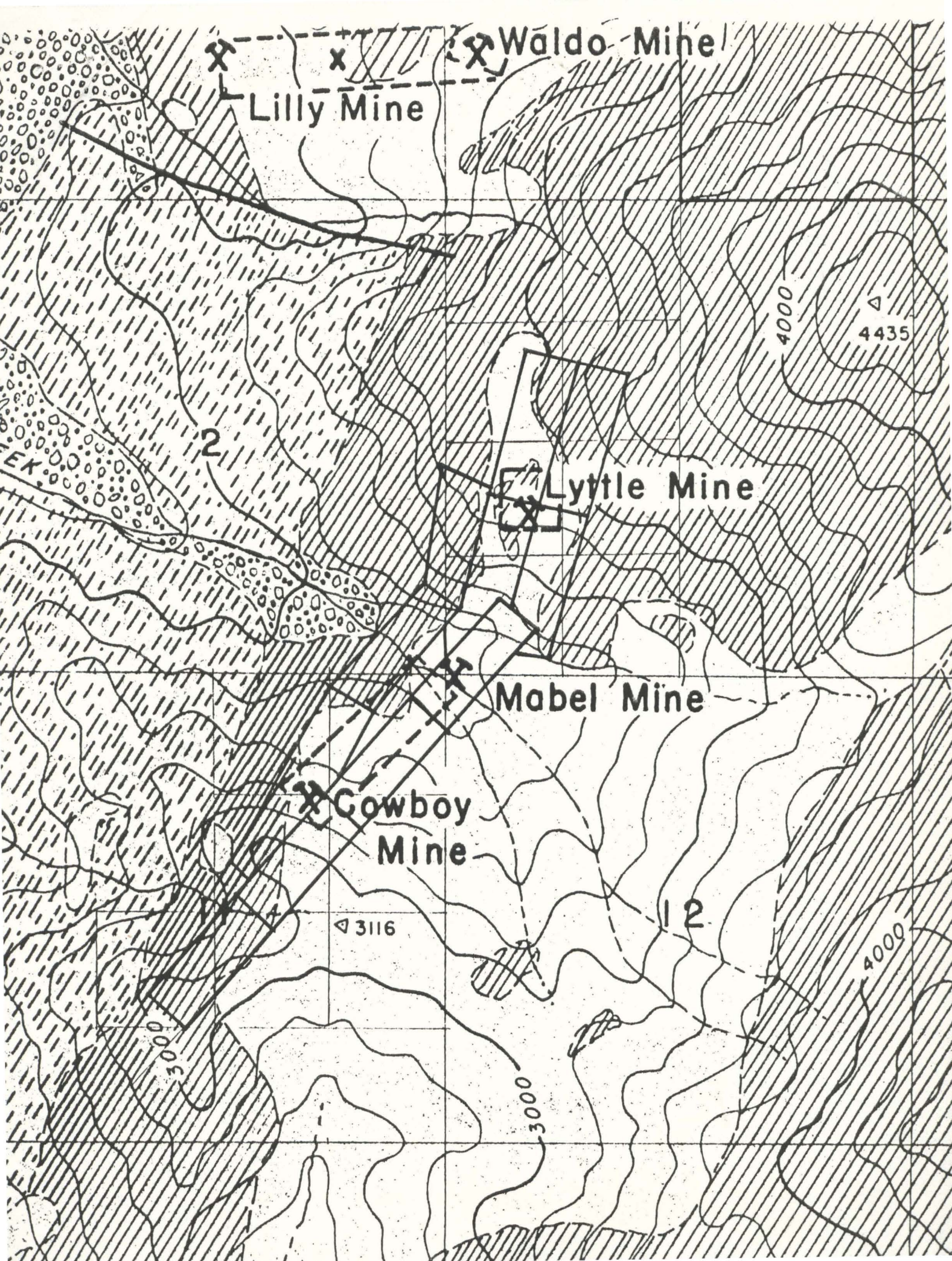
RECEIVED

TOWNSHIP 41 S., RANGE 8 W.W.M.

JOSEPHINE COUNTY, OREGON

SCALE 2 IN. = 1 MILE





Waldo Mine

Lilly Mine

Lytle Mine

Mabel Mine

Cowboy Mine

4435

3116

12

4000

3000

4000

2