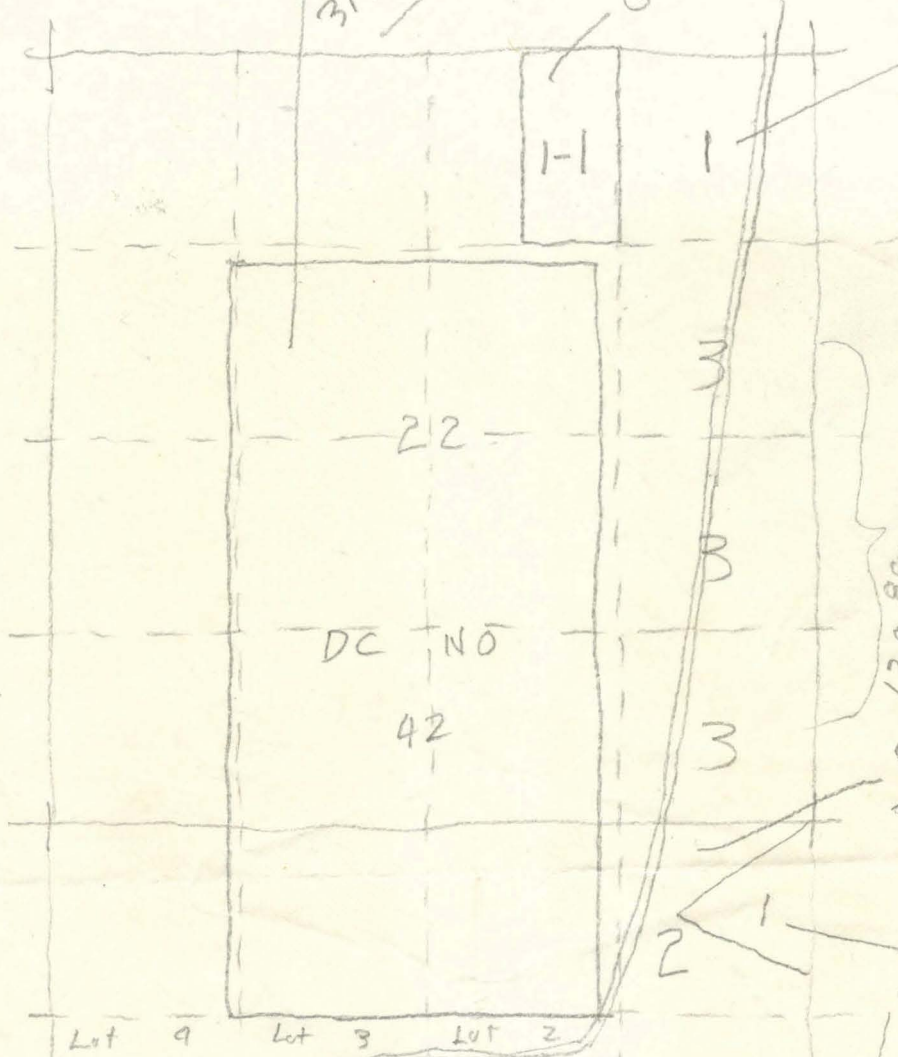


Pep.
319⁴⁴ acres

G.W. Hales - 20 A
Road.

40 A

Pep.



A.R. Kimmel
221 E 9^{1st} St
L.A. / Cal.
Fork

Pep.
33²⁰ A.

East

School Dist.

A.D. Paterson
C.N. Oldfield
Walter Leek
R.M. Grauer
Chas Harrison
Hydroplas Min Co
40 A.

Forest Moore
Happy Camp
Calif.
60 A

Decd
Vol 105 pg 126
104 - 502

o/o Estarley Mine.
Cave Junction Ore.

Pep.
152⁷⁴ A.
ER French
(Earl Nixon)
1.75 A.
80 A.

115

T. 40 S., R. 8 W., Sec 22, 27...