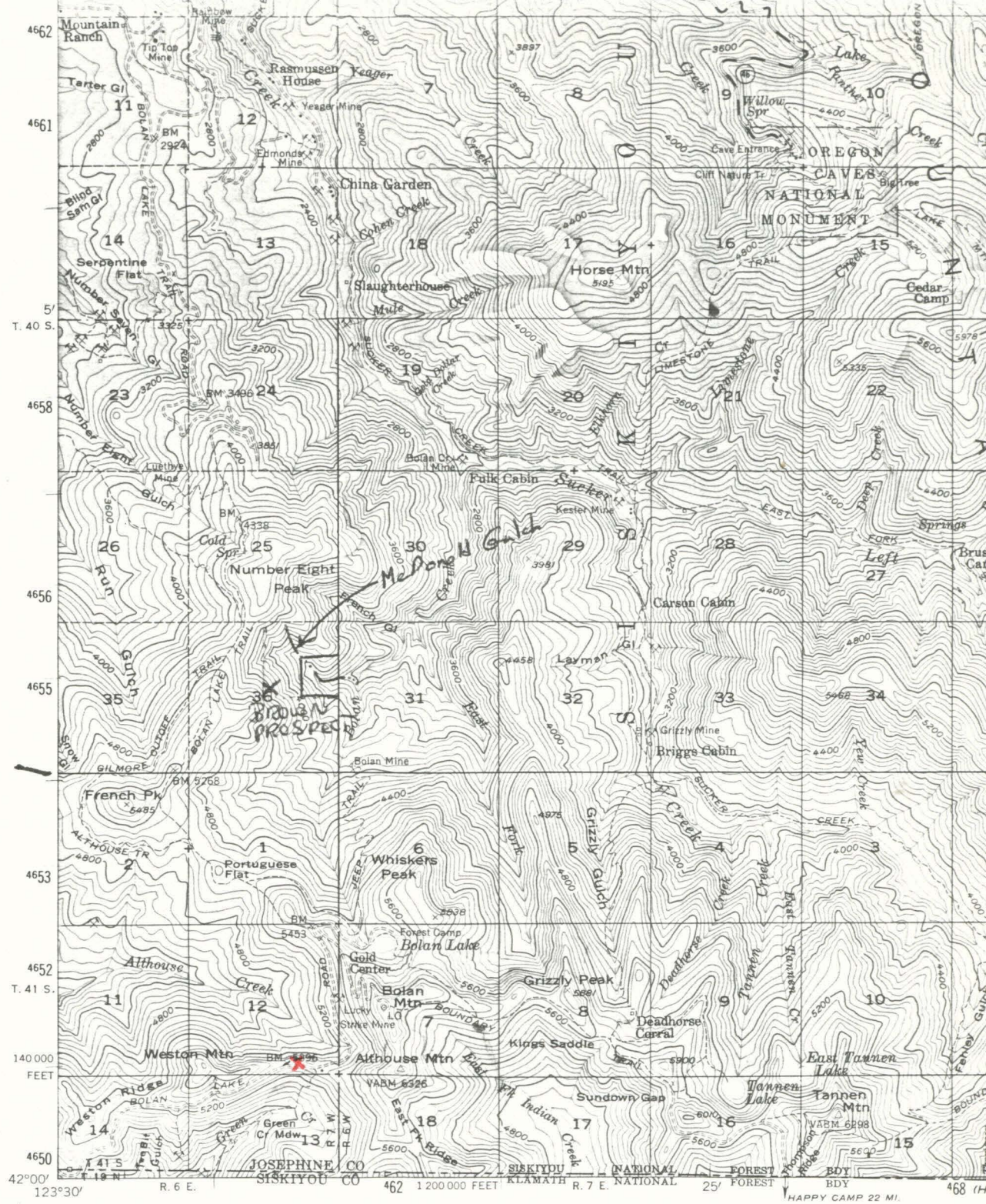


14  
 Section #1-#3  
 recorded 4/6/77



(PRESTON PEAK)  
 12671

Mapped, edited, and published by the Geological Survey

Control by USGS and USC&GS

Topography from aerial photographs by multiplex methods

Aerial photographs taken 1951-52. Field check 1954

Polyconic projection. 1927 North American datum

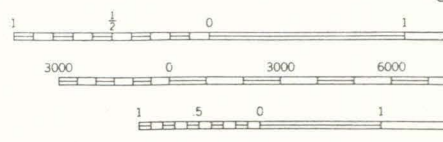
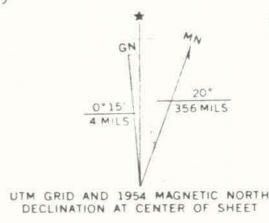
10,000-foot grid based on Oregon coordinate system, south zone

Dashed land lines indicate approximate locations

Unchecked elevations are shown in brown

1000-meter Universal Transverse Mercator grid ticks,

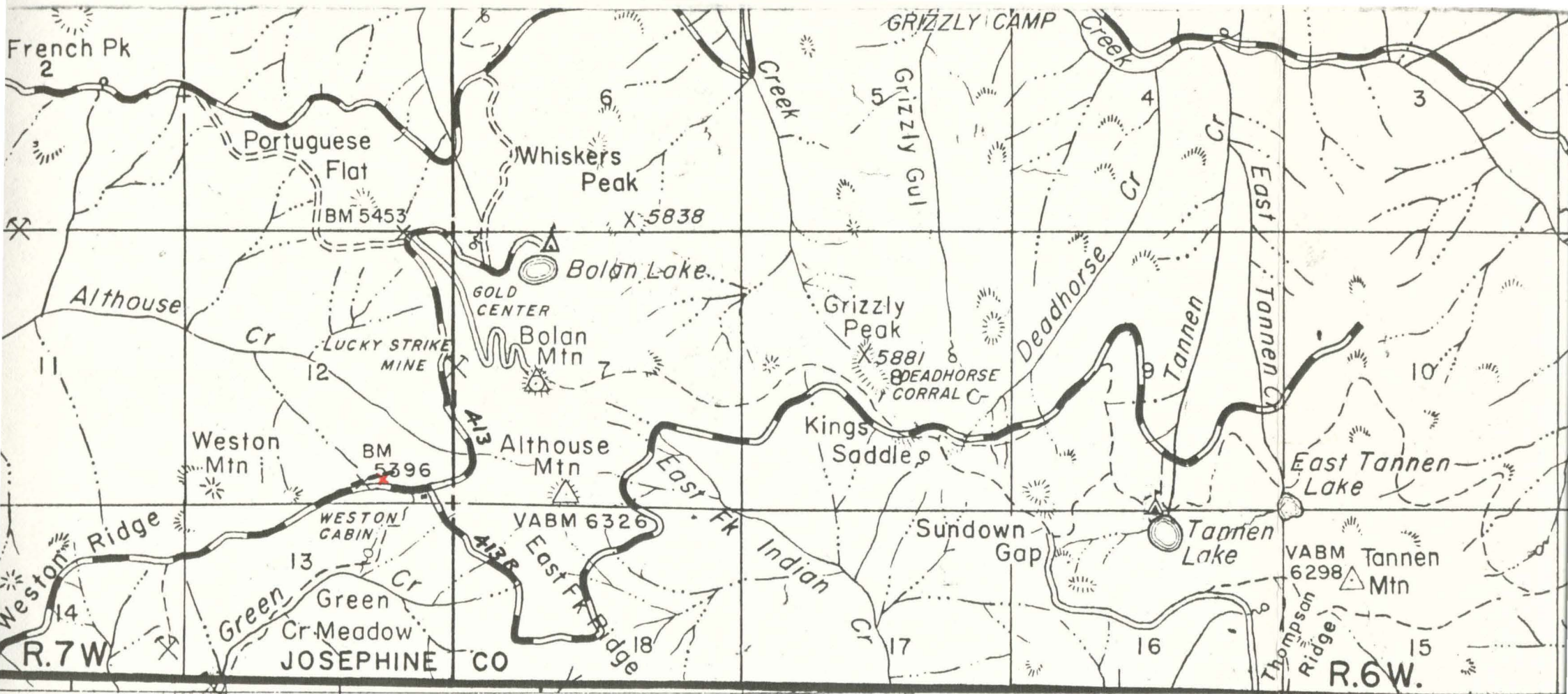
zone 10, shown in blue



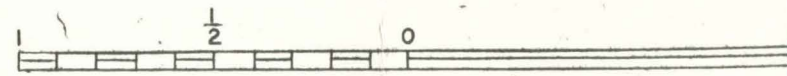
UTM GRID AND 1954 MAGNETIC NORTH DECLINATION AT CENTER OF SHEET

THIS MAP COMPLIES WITH  
 FOR SALE BY U. S. GEOLOGICAL SURVEY, D  
 A FOLDER DESCRIBING TOPOGRAPHY





Map prepared by U.S. Forest Service, from enlargement of U.S. Geological Survey 1:62500 scale 1954 map of the Tannen region. Caves quadrangle sheet with some modifications added to bring out draws.



6000-foot grid based on state coordinate system, Oregon, south zone.