

1903 - R.O.W.

CAVE JUNCTION

4 3
9 10

46

N.P.S. RANGER STATION

withdrew 1964

MILL SITE

LIME MARBLE NO. 1

LIME MARBLE X

LAKE CREEK

LIME MARBLE NO. 7

LIME MARBLE NO. 6

LIME MARBLE NO. 5

LIME MARBLE NO. 4

ENTRANCE STATION

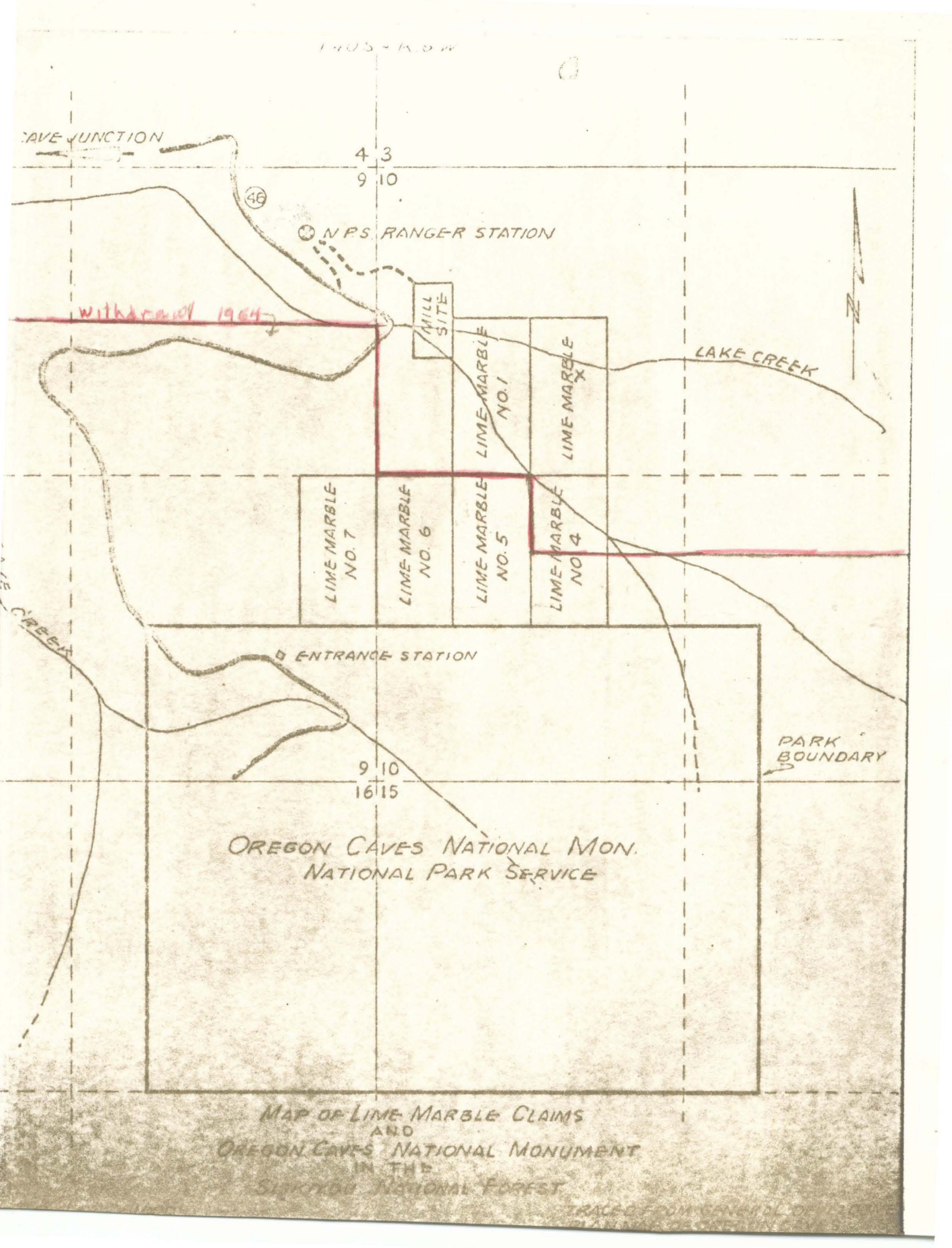
9 10
16 15

PARK BOUNDARY

OREGON CAVES NATIONAL MON.
NATIONAL PARK SERVICE

MAP OF LIME MARBLE CLAIMS
AND
OREGON CAVES NATIONAL MONUMENT
IN THE
Siskiyou NATIONAL FOREST

TRACED FROM CANADIAN D.

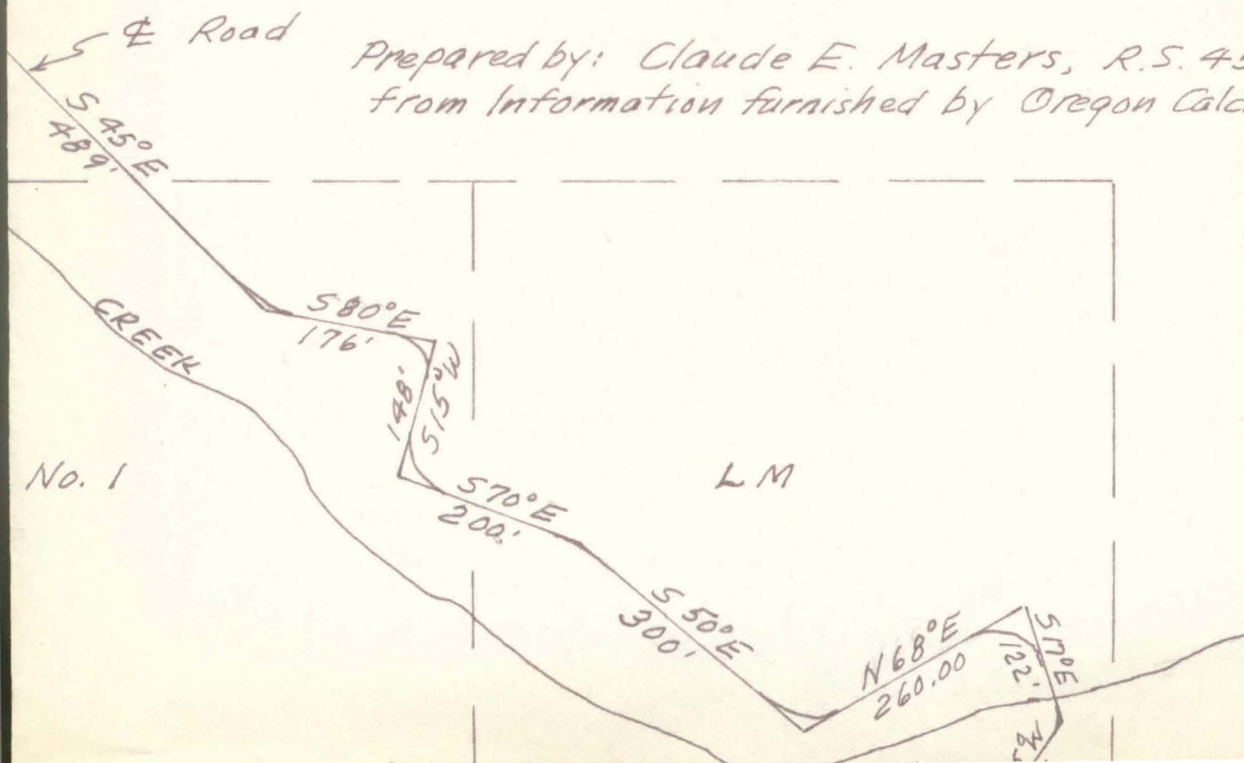


MAP of HARMONY LIME DEVELOPMENT

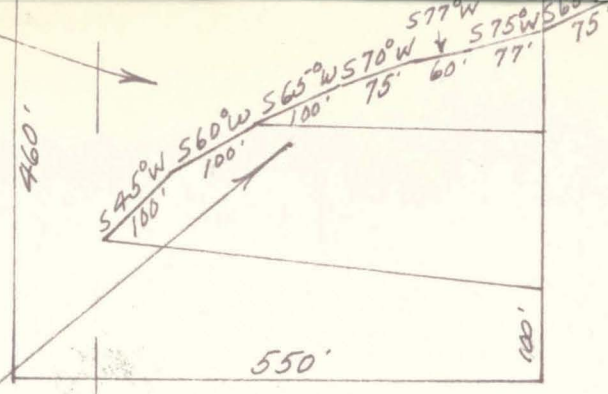
For: OREGON CALCITE CORP.
729 Summit Loop Rd.
Grants Pass, Oregon

Scale 1" = 200'

Prepared by: Claude E. Masters, R.S. 457
from information furnished by Oregon Calcite Corp.



Area of
Open Pit
Operations



660'

660'

No. 5

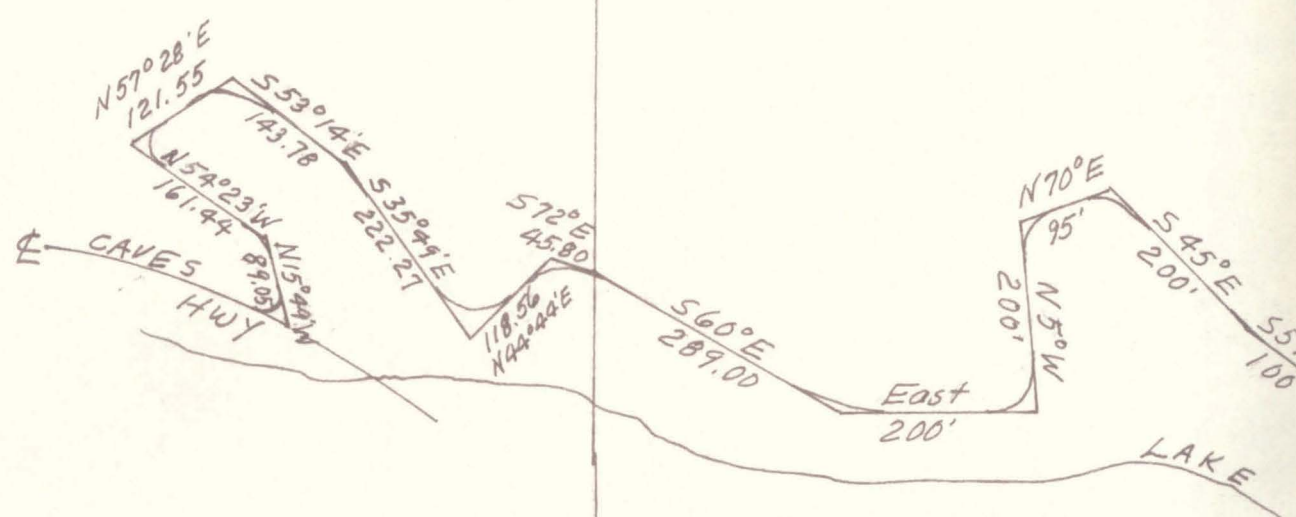
No. 4

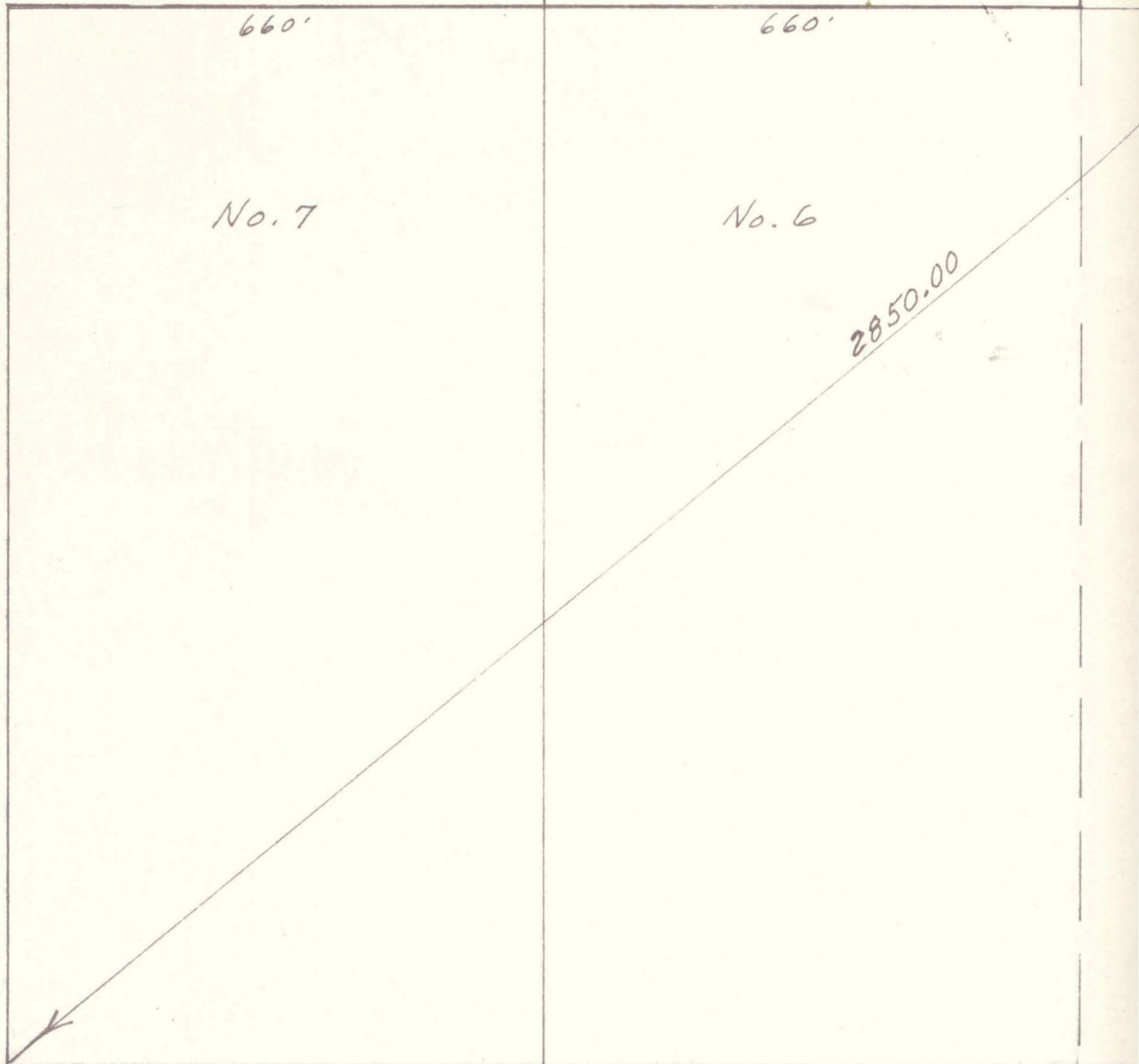
NATIONAL MONUMENT

4 3
9 10



50°20'W
858.53





660'

660'

No. 7

No. 6

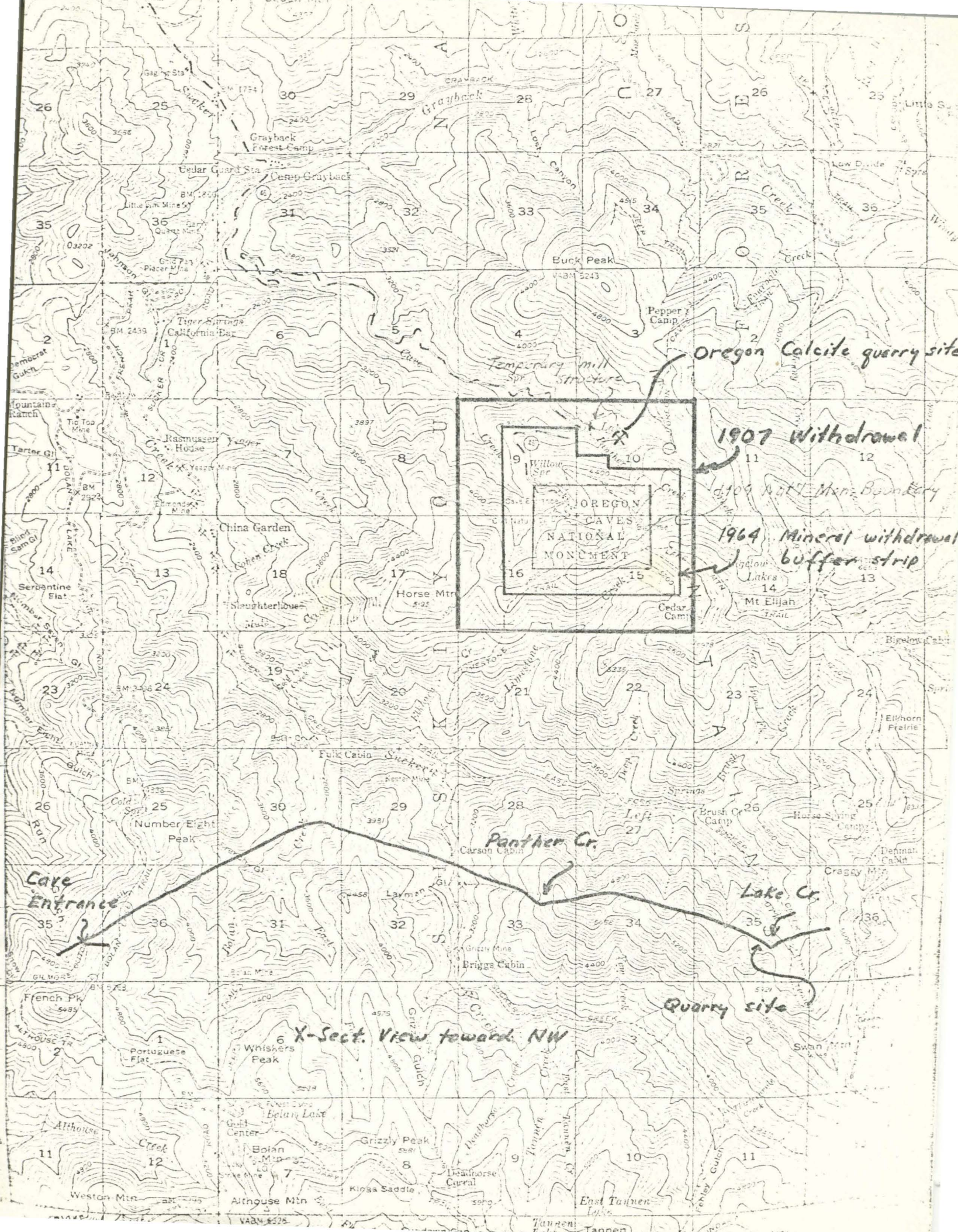
2850.00



Caves Area

Approx. 1320' South

OREGON CAVES



Oregon Calcite quarry site

1907 Withdrawal

1909 Natl. Mon. Boundary

1964 Mineral withdrawal buffer strip



Panther Cr.

Lake Cr.

Quarry site

X-Sect. View toward NW

Cave Entrance