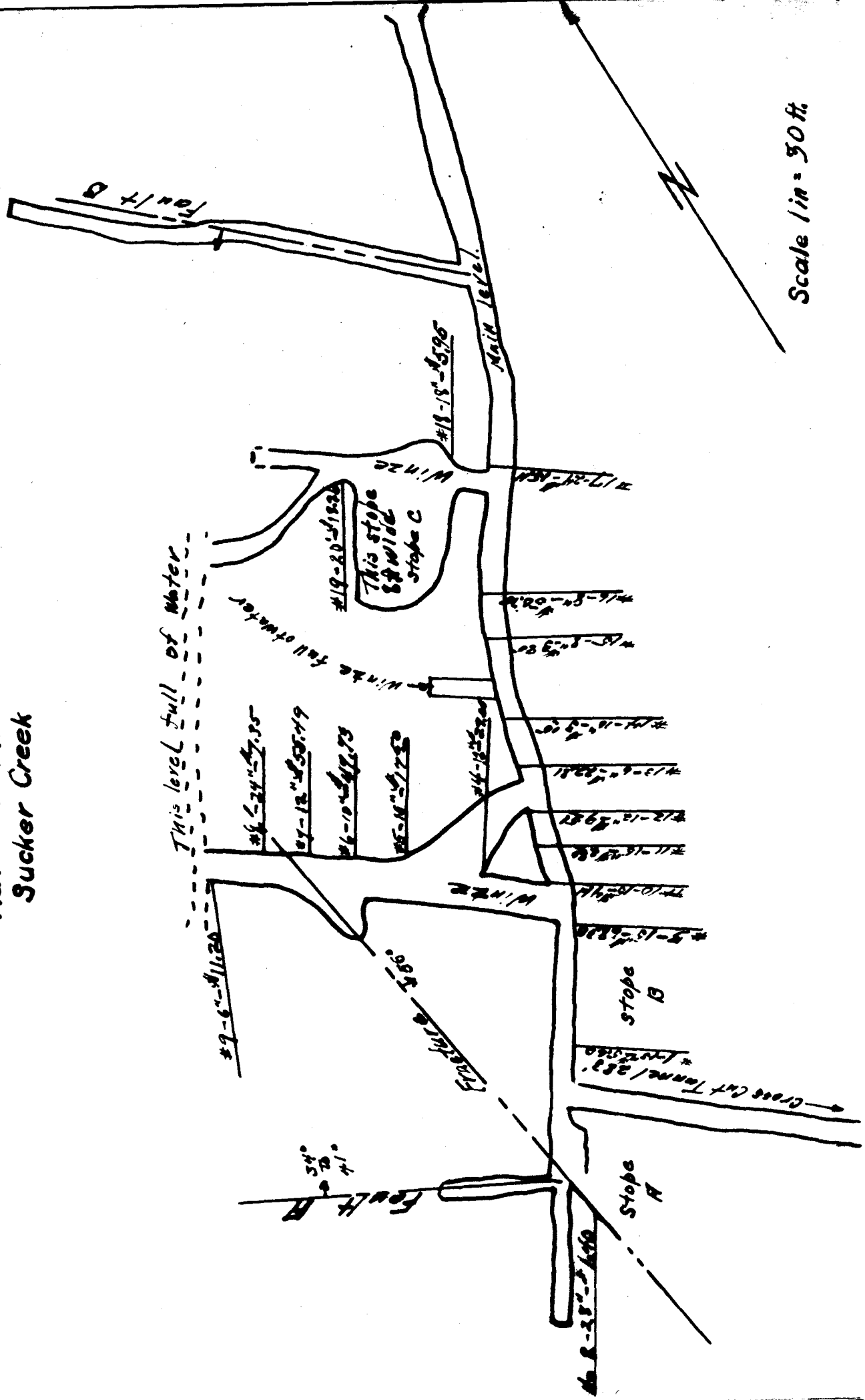


Rainbow Mine Sucker Creek



Scale 1 in = 50 ft.



- 6-B
- 6-1
- Dufur, 382 3-E
- Dundee, 232 3-C
- Durkee, 100 4-J

- Eagle Point, 211 8-C
- Echo, 311 2-H
- Eddyville, 41 4-B
- Elgin, 728 2-I
- Elton, 90 6-B
- Elora, 100 5-B
- Elsie, 68 2-B
- Empire, 493 6-A
- Enterprise, 1,379 3-J
- Estacada, 524 3-C
- Eugene, 18,901 5-C

- Falls City, 494 4-B
- Flora, 64 2-J
- Florence, 339 5-A
- Forest Grove, 1,859 2-C
- Fort Klamath, 100 1-B
- Fort Stevens, 160 8-D
- Fossil, 538 3-F
- Foster, 25 4-C
- Freewater, 732 2-H
- Frenchglen, 34 7-H

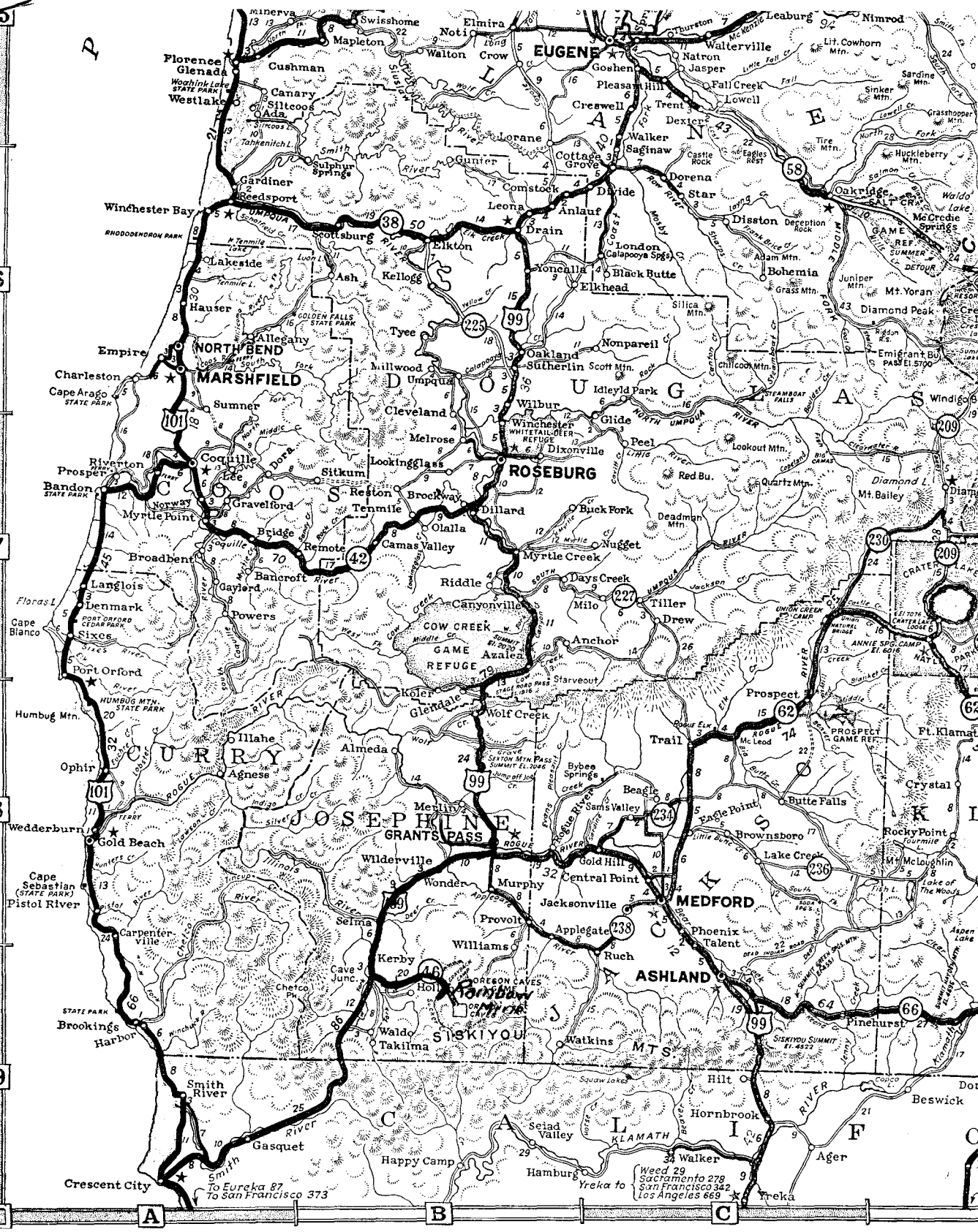
- Gales Creek, 122 2-C
- Gardiner, 300 6-A
- Garibaldi, 213 2-B
- Gaston, 227 3-C
- Gearhart, 125 1-B
- Gervais, 254 3-C
- Gladstone, 1,348 3-C
- Glenada, 110 5-A
- Glendale, 516 8-D
- Glenwood, 200 2-B
- Goble, 91 1-C
- Gold Beach, 400 8-A
- Gold Hill, 500 8-C
- Goshen, 93 5-C
- Government Camp, 50 3-D
- Grand Ronde, 350 3-B
- Granite, 50 4-H
- Grants Pass, 4,666 8-B
- Grass Valley, 208 3-F
- Gresham, 1,635 2-D

- Haines, 431 4-I
- Halfway, 351 4-J
- Halsey, 300 4-C
- Hamlet, 35 2-B
- Hammond, 244 1-B
- Hardman, 120 3-G
- Harlan, 25 4-B
- Harper, 50 5-J
- Harrisburg, 575 5-C
- Hastings, 193 2-B
- Hepner, 1,190 3-G
- Hermiston, 608 2-G
- Hillsboro, 3,039 2-C
- Homestead 3-J
- Hood River, 2,757 2-E
- Horton, 40 5-B
- Hot Lake, 250 3-I
- Hubbard, 330 3-C
- Huntington, 803 5-J

- Imbler, 203 2-I
- Imnaha 2-J
- Independence, 1,248 4-C
- Ione, 283 2-G
- Irrigon, 65 2-G
- Island City, 116 3-I

- Jacksonville, 706 8-C
- Jefferson, 391 4-C
- Jewell, 167 2-B
- John Day, 432 4-H
- Jordan Valley, 306 7-J
- Joseph, 504 3-J
- Junction City, 922 5-B
- Juntura, 136 6-I

- Kamela, 27 3-H
- Keasey, 50 2-B
- Kent, 94 3-F
- Kerby, 40 9-A
- Kornville, 150 3-B
- Kimberley, 45 4-G
- Kings Valley 4-B
- Kinzua 3-F
- Klamath Agency, 150 8-D
- Klamath Falls, 16,093 9-B
- Knappa, 100 1-B



P

6

7

8

9

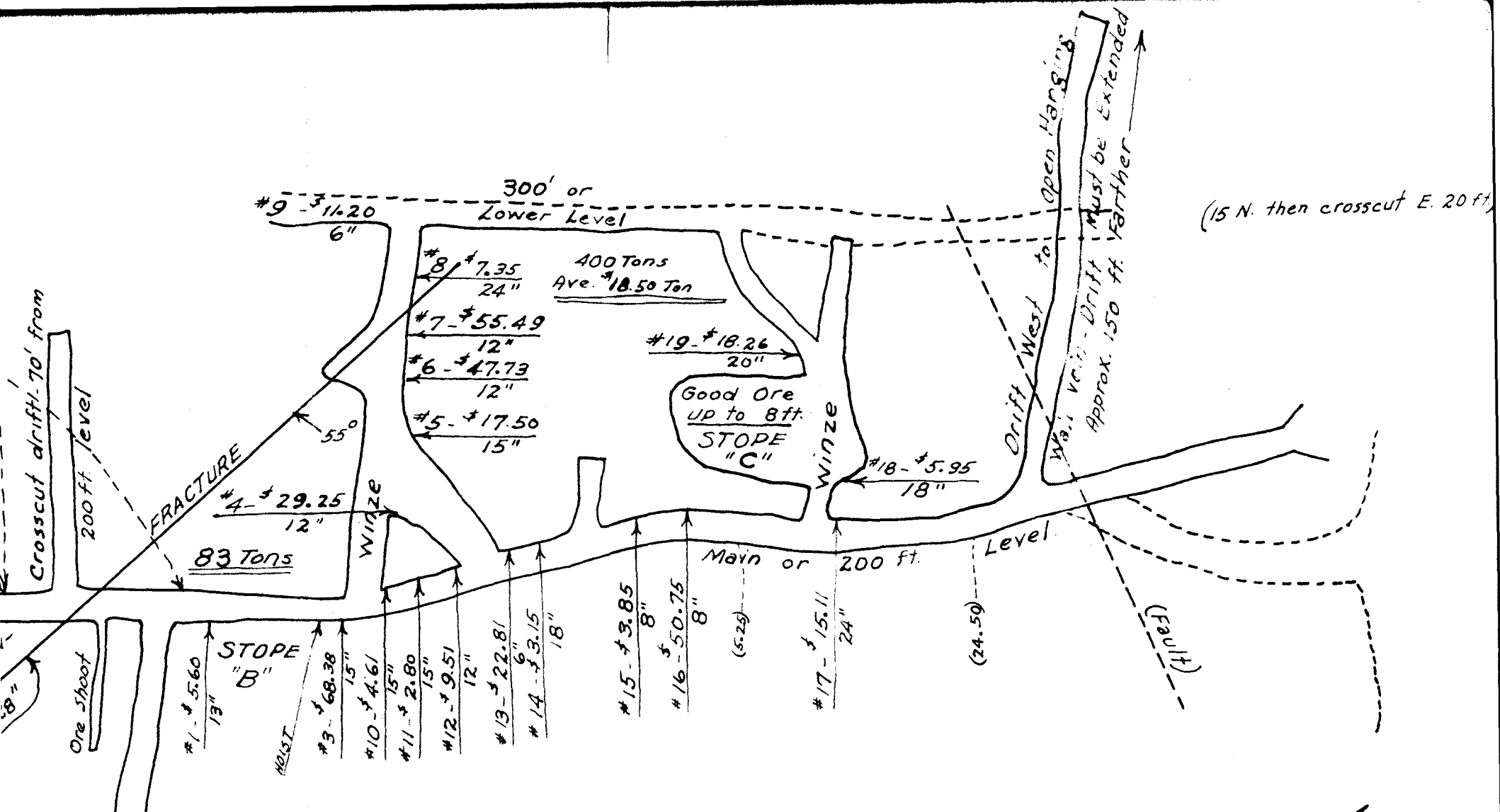
A

B

C

To Eureka 87
To San Francisco 373

Weed 29
Sacramento 278
San Francisco 342
Los Angeles 669



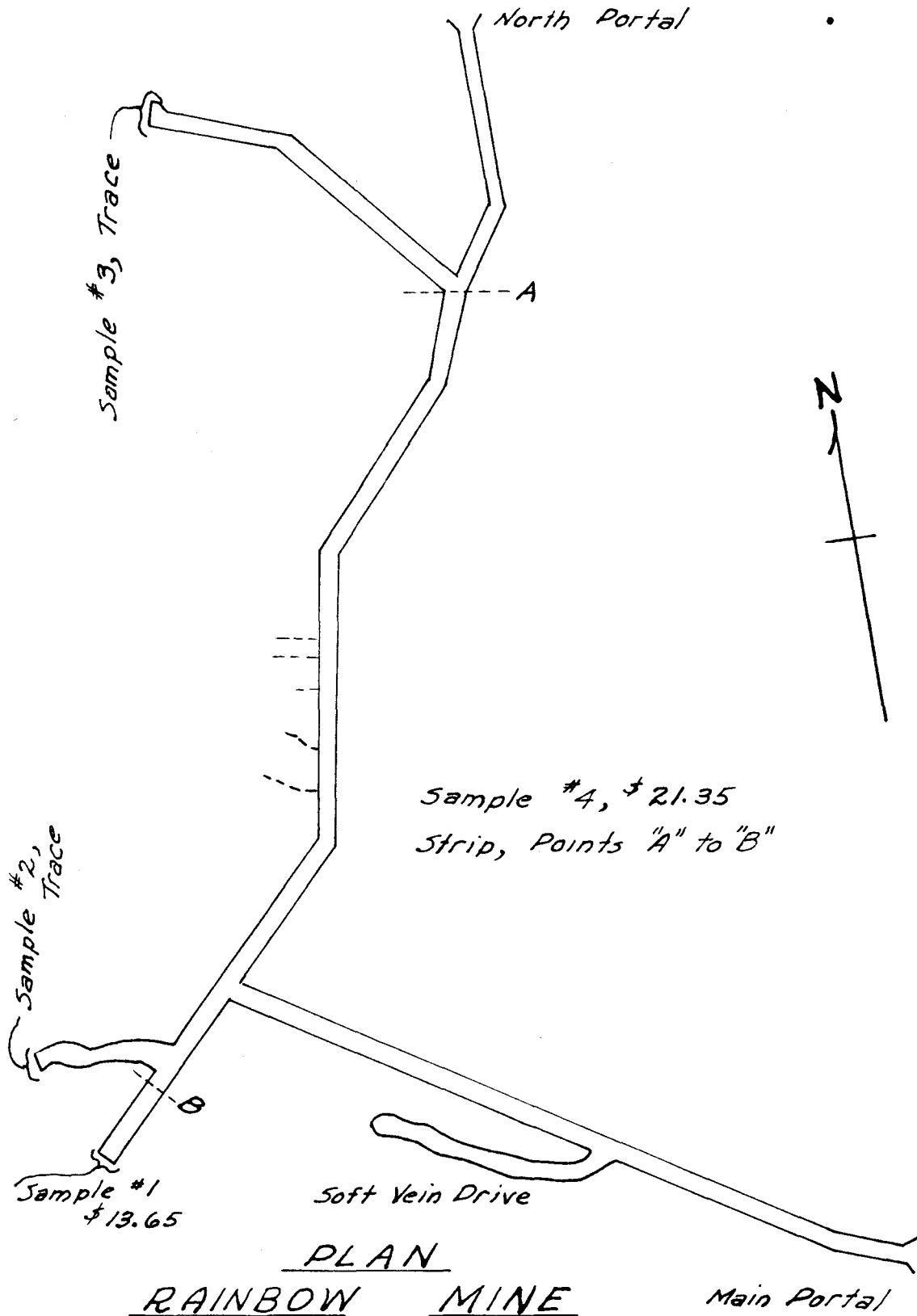
RAINBOW MINE
SUCKER CREEK, JOSEPHINE CO., OREGON

ORIGINAL MAP AND SAMPLING BY
J.E. MORRISON, MINING GEOLOGIST
 FOR STATE OF OREGON

Assays by Oregon State Laboratories
 Grants Pass, Oregon 1-12-38

Copied by L.H. Bowlby, 8-1-39

Traced by R.C. Treasher 2-10-41
 Dashed lines & parantheses
 indicate penciled additions
 to map.



PLAN
RAINBOW MINE

[no scale given]

Copy - L.H.B. 6-1-AD
 R.C. Treasher 2-10-A1