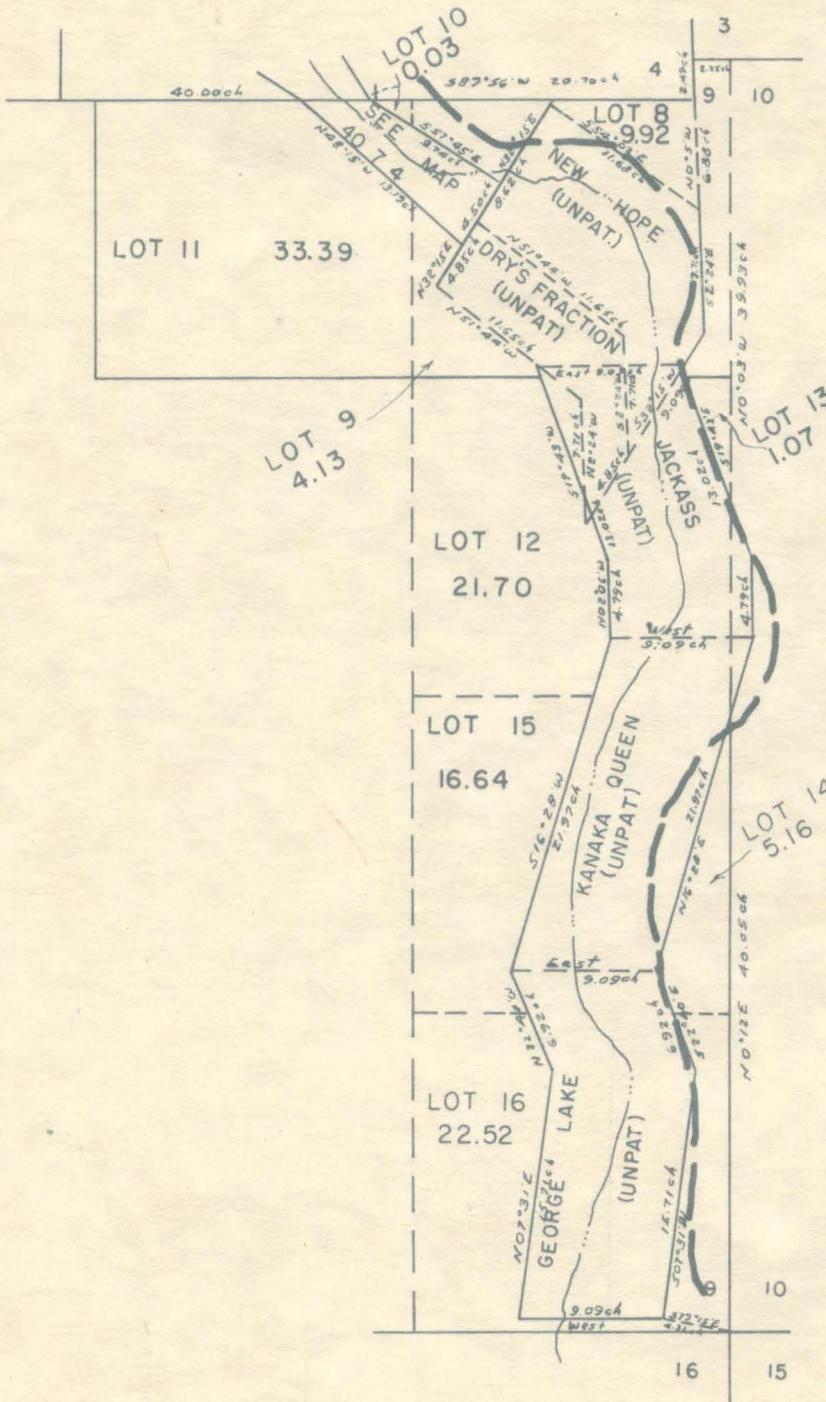


MINING CLAIMS T.40S. R.7W. W.
JOSEPHINE COUNTY

1" = 800'



DETAIL 40 7 900 & 1600
IN SEC. 4 & 9 T40S. R.7W. W.M.

5

A-D-127-SP

P A C I F I C O C E A N

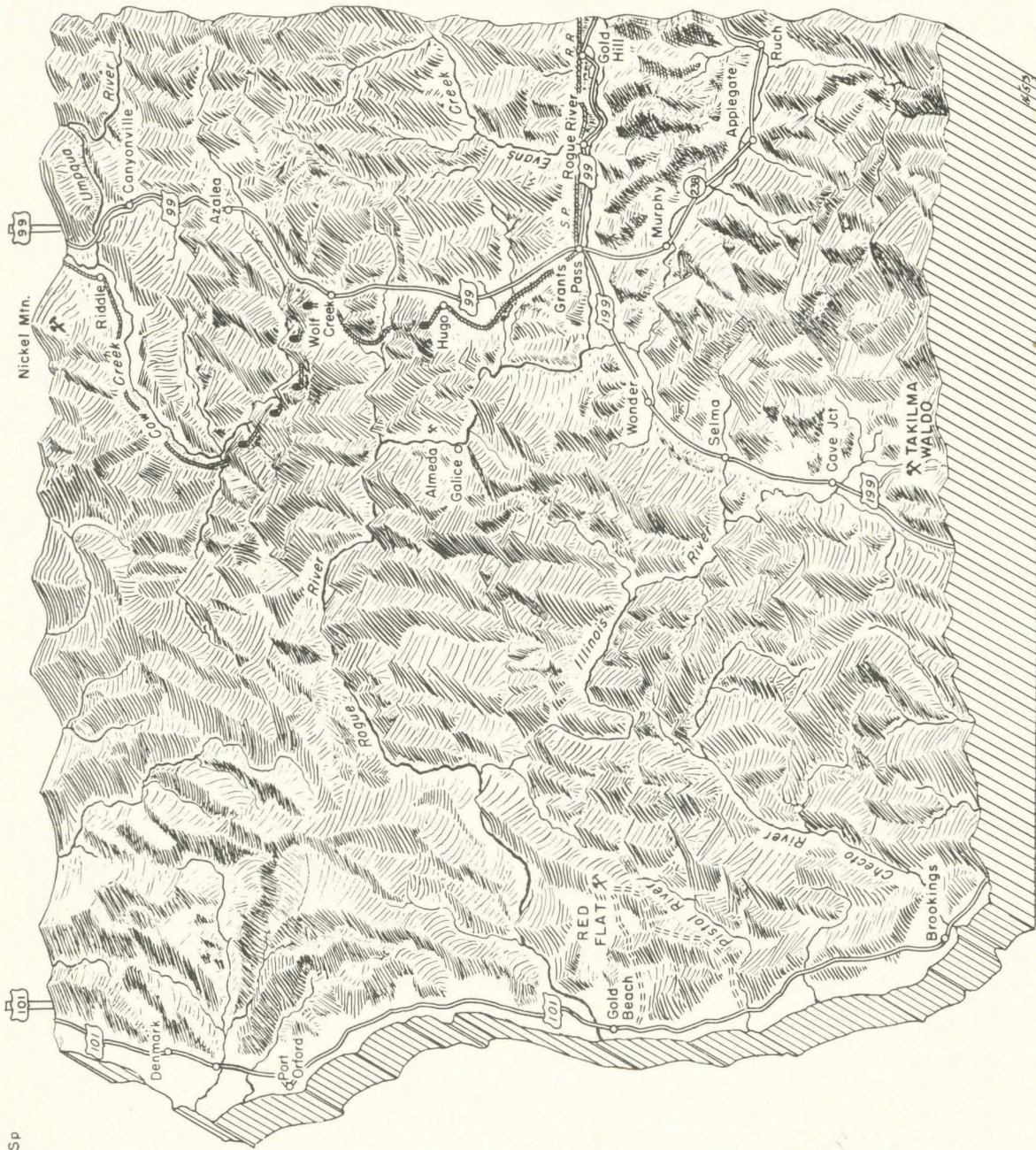


Figure 1. - Relief map of southwestern Oregon showing Takilma-Waldo copper district.

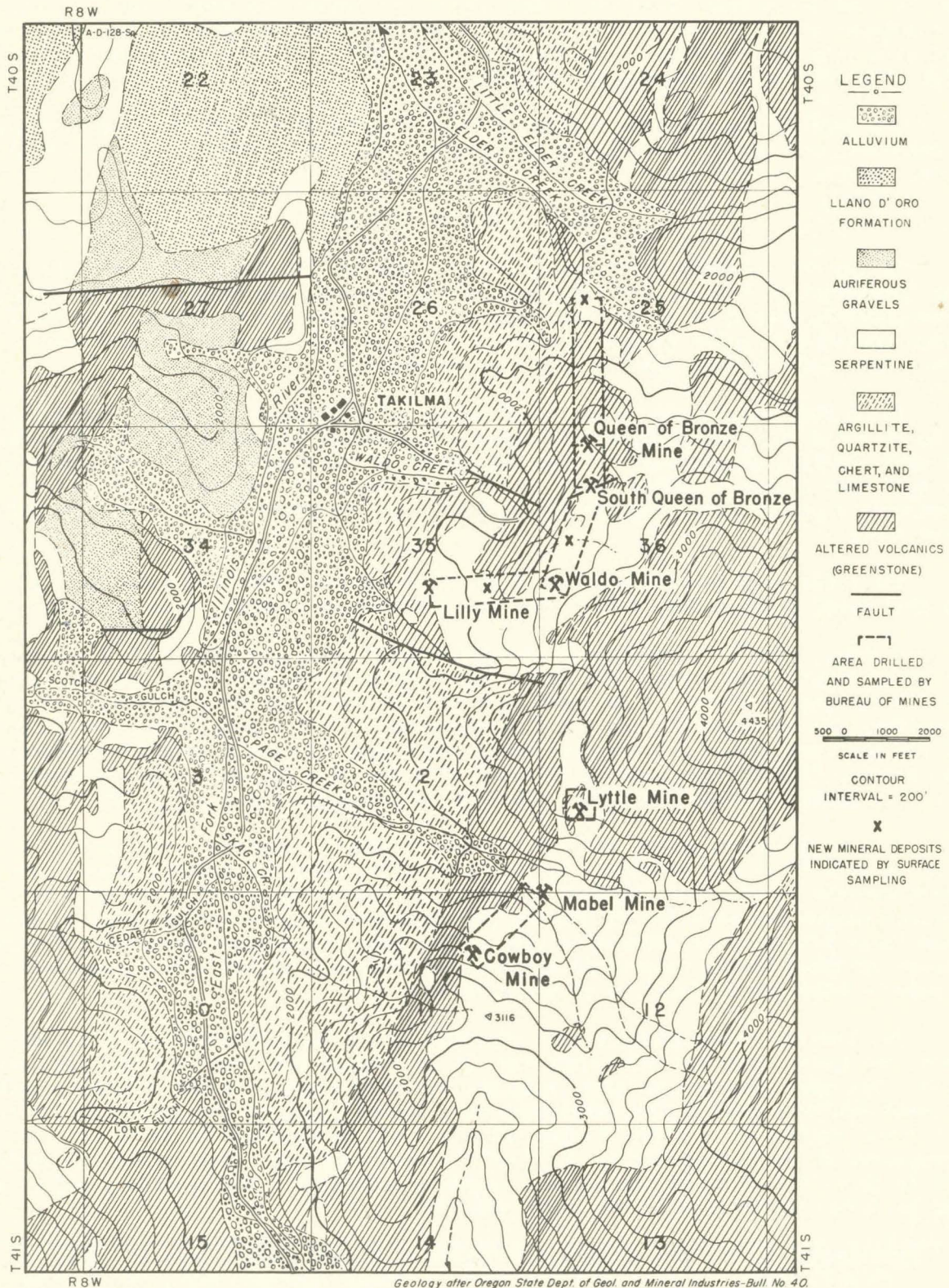


Figure 2. - Geologic map of Takilma-Waldo copper belt, Josephine County, Oreg.

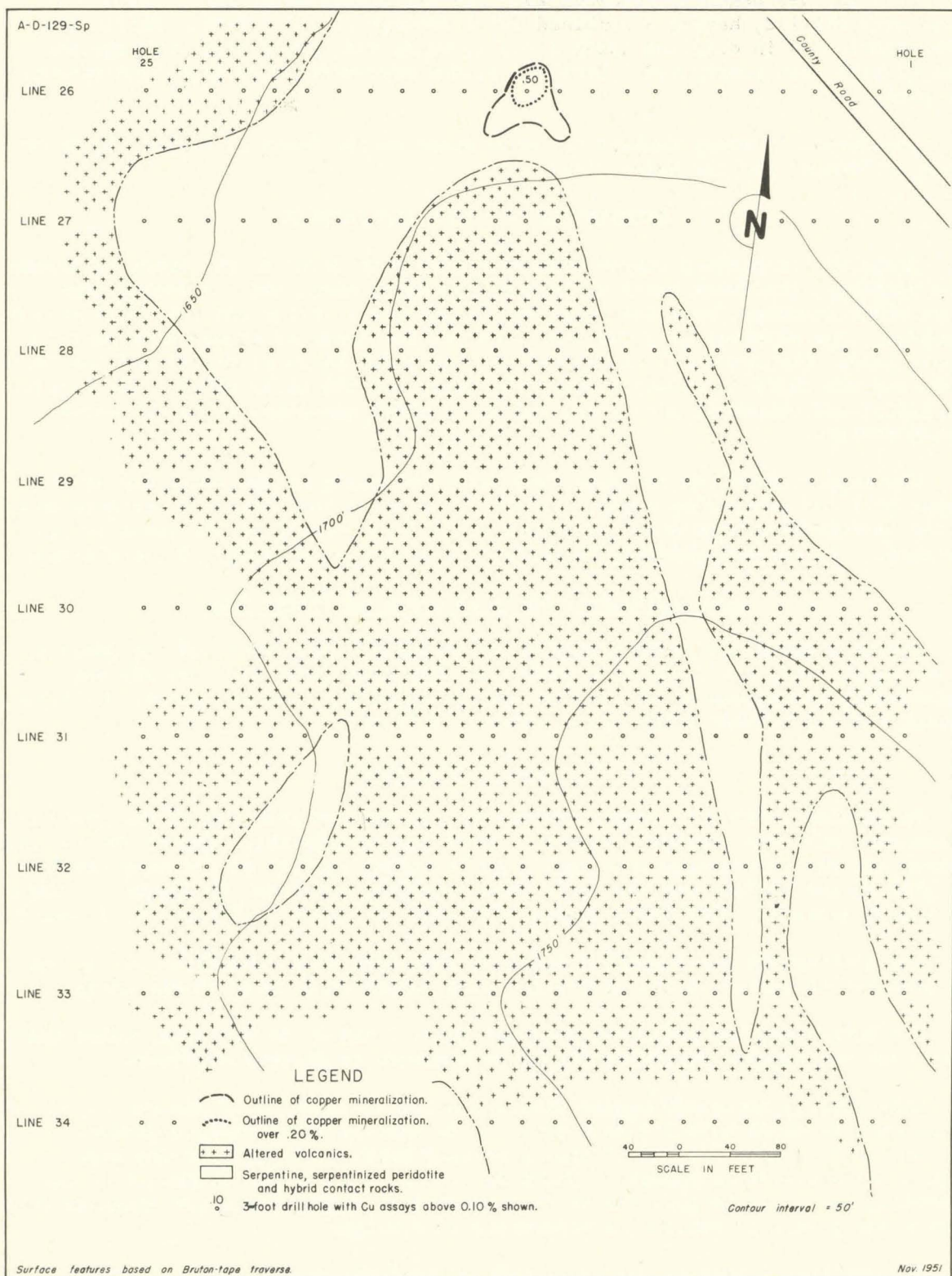


Figure 3. - Plan of surface 3,000 feet north of Queen of Bronze mine.

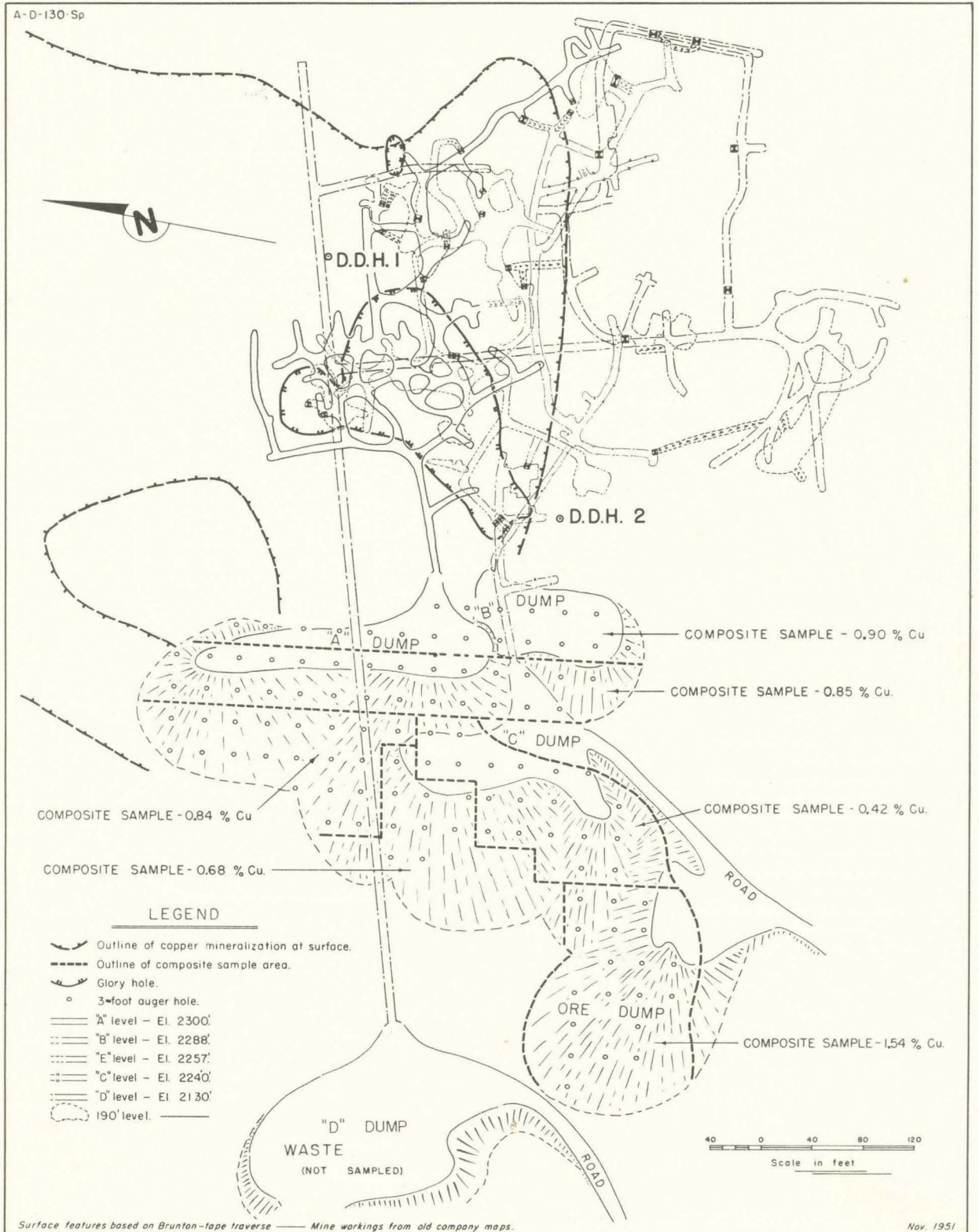


Figure 4. - Mine workings and assay plan of mine dumps, Queen of Bronze mine.

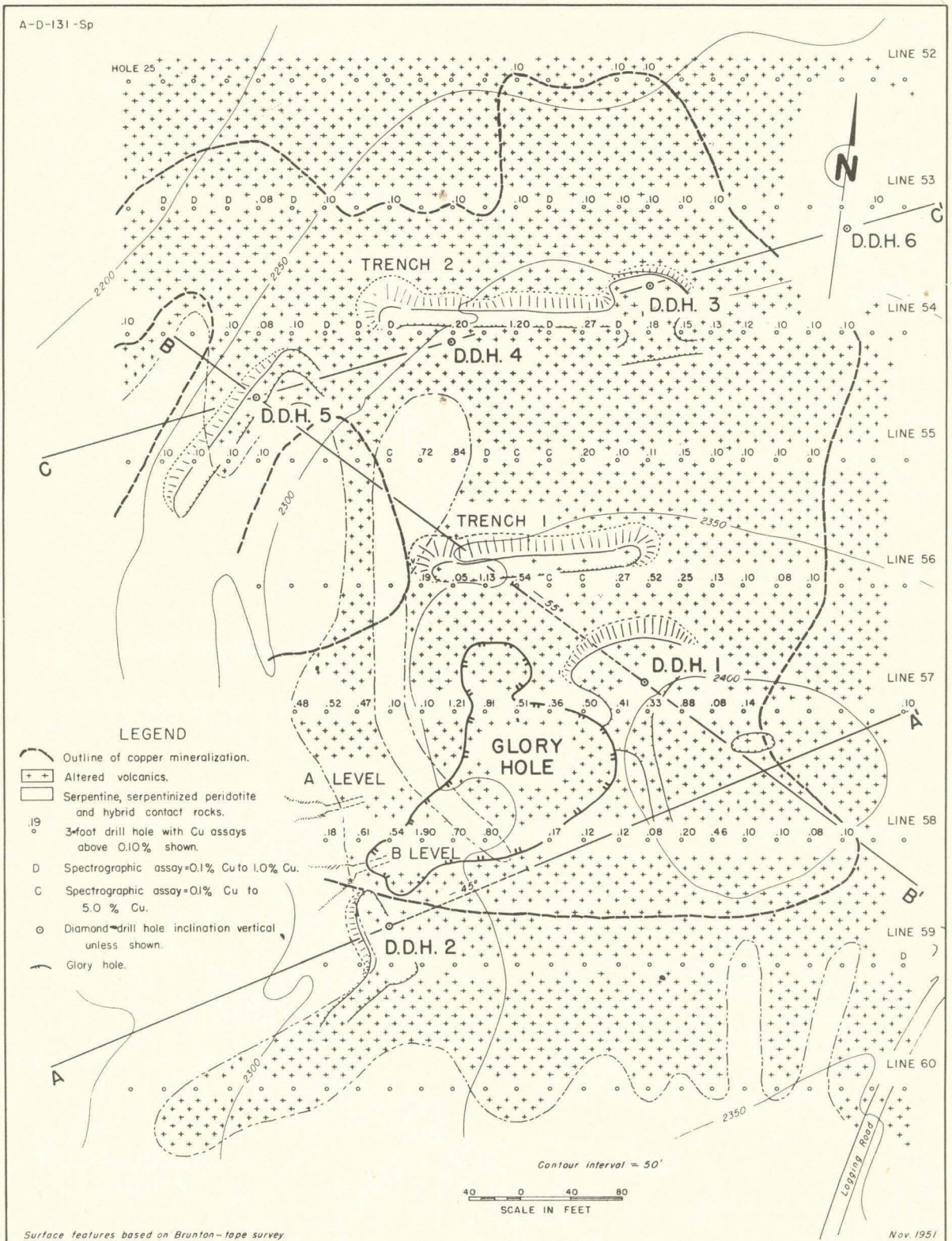


Figure 5. - Plan of surface, Queen of Bronze mine, Josephine County, Oreg.

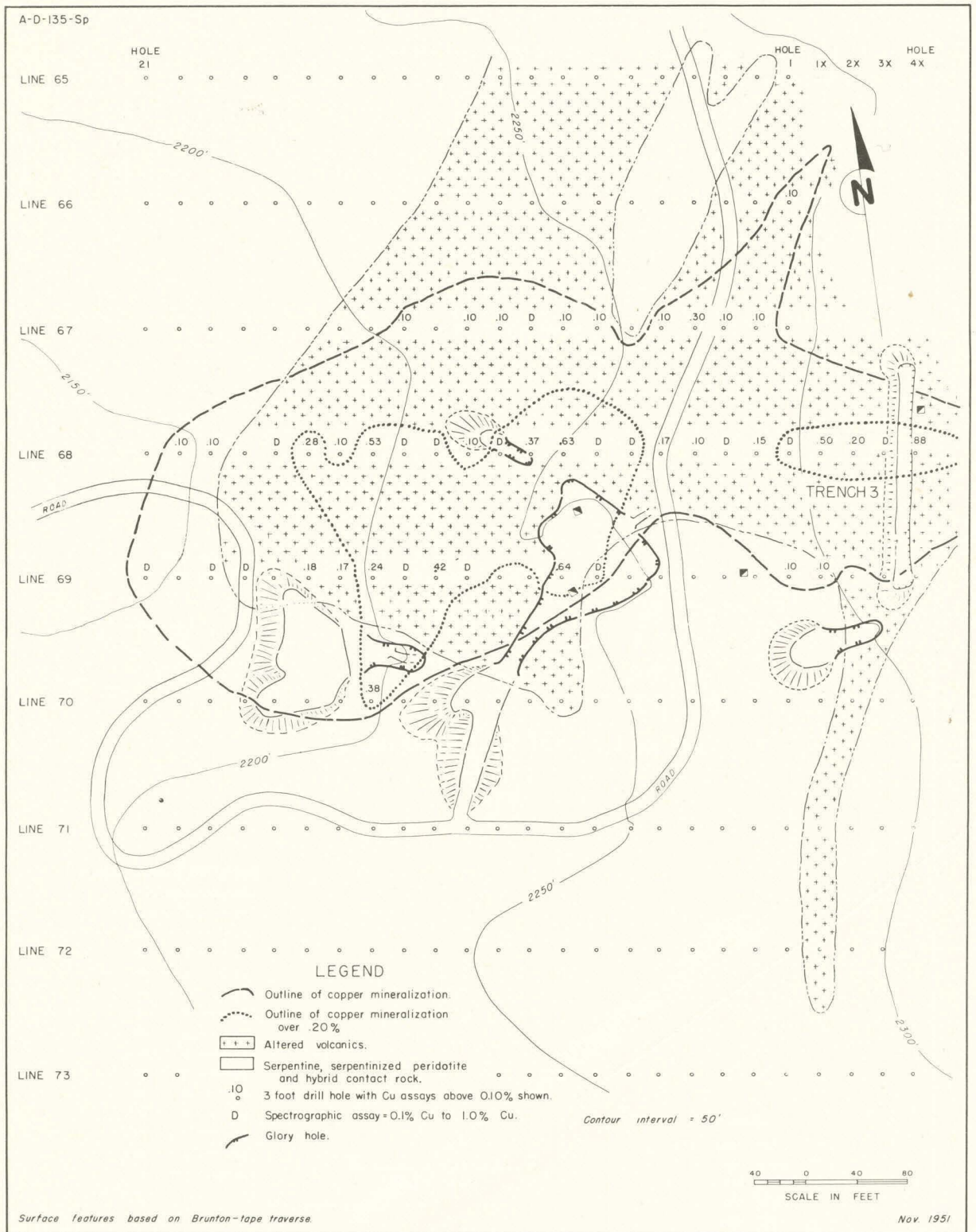


Figure 9. - Plan of surface of South Queen of Bronze mine, Josephine County, Oreg.

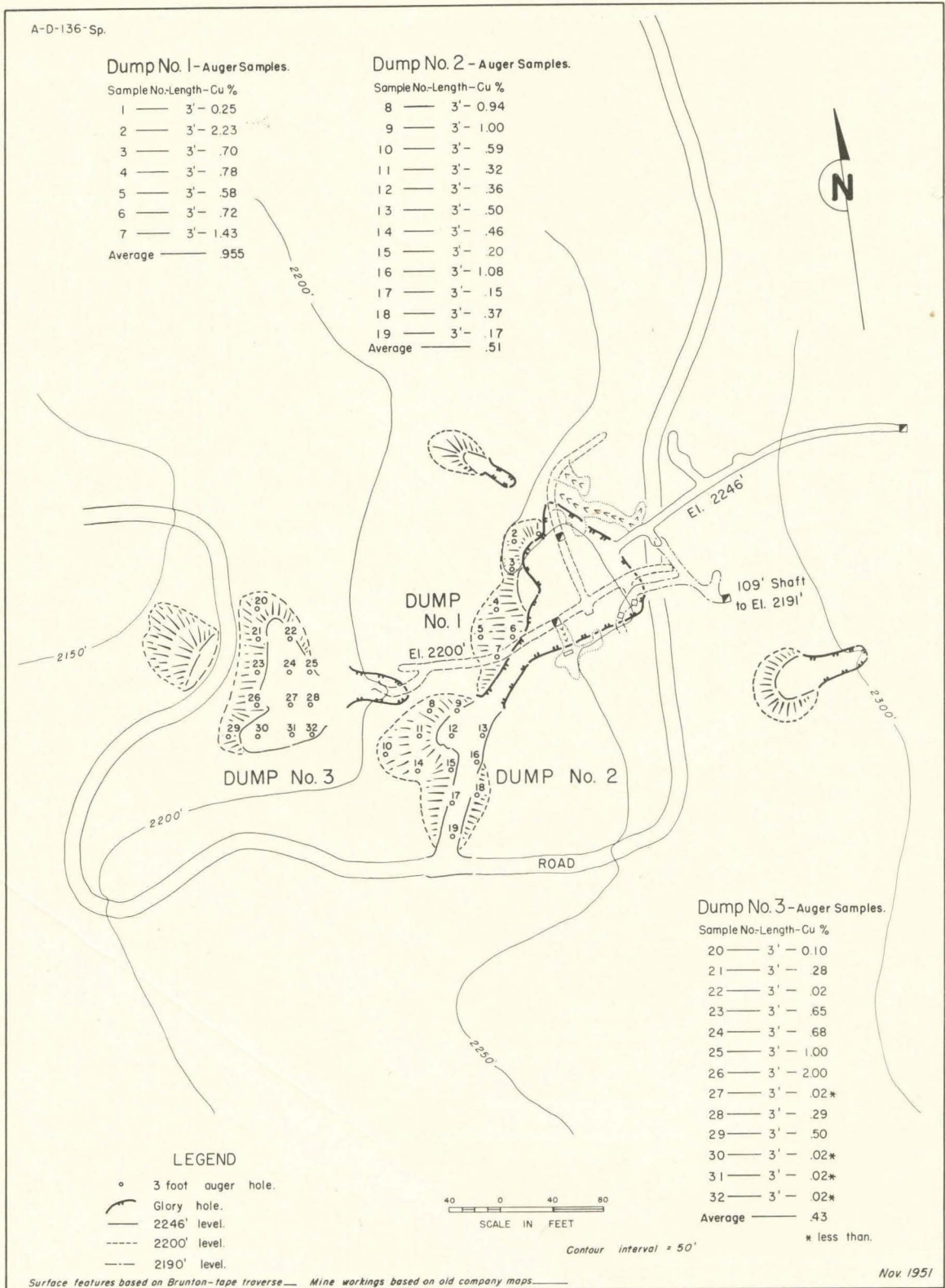


Figure 10. - Assay plan, South Queen of Bronze mine dumps.

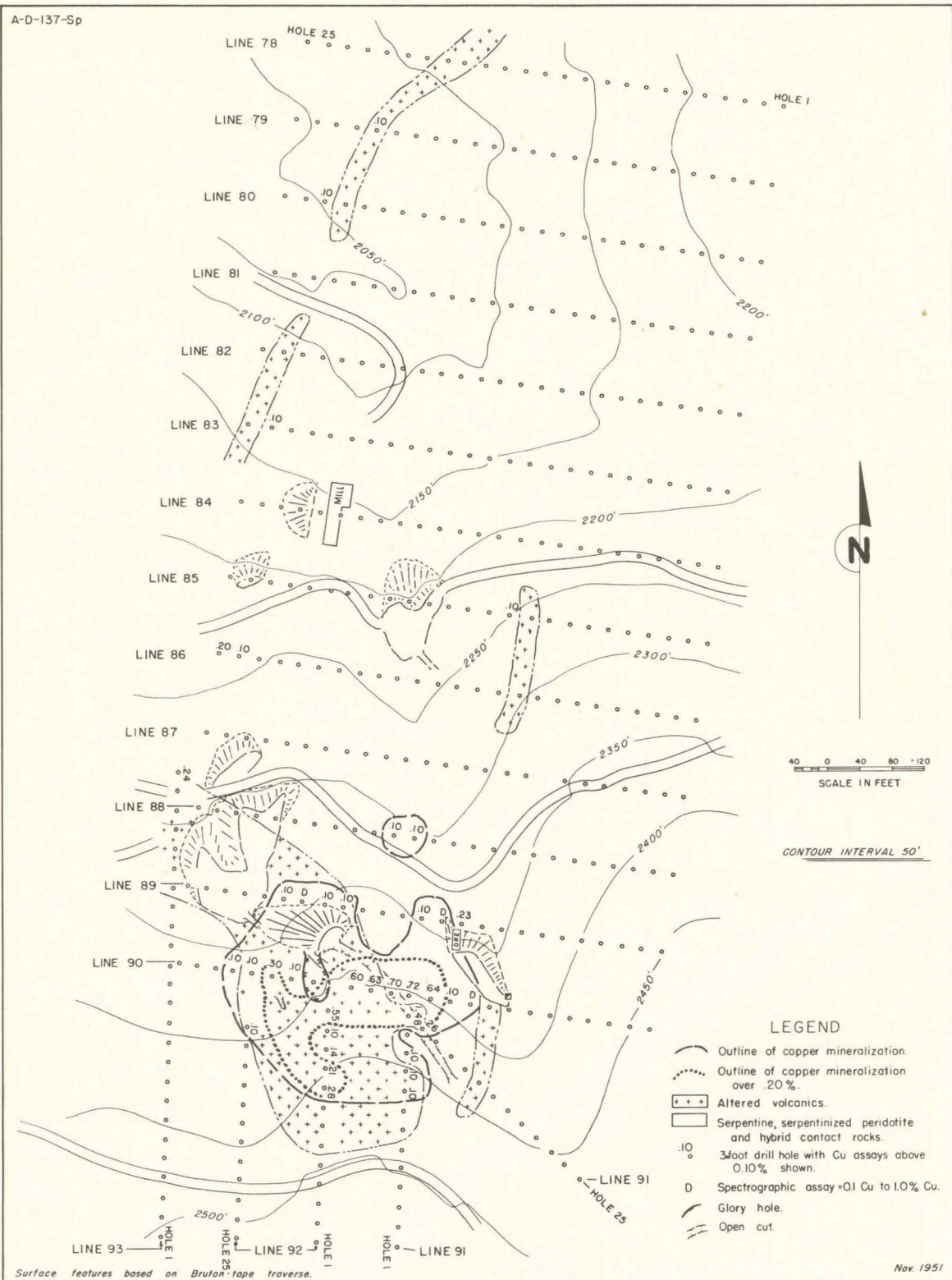


Figure 11. - Plan of surface, Waldo mine, Josephine County, Oreg.

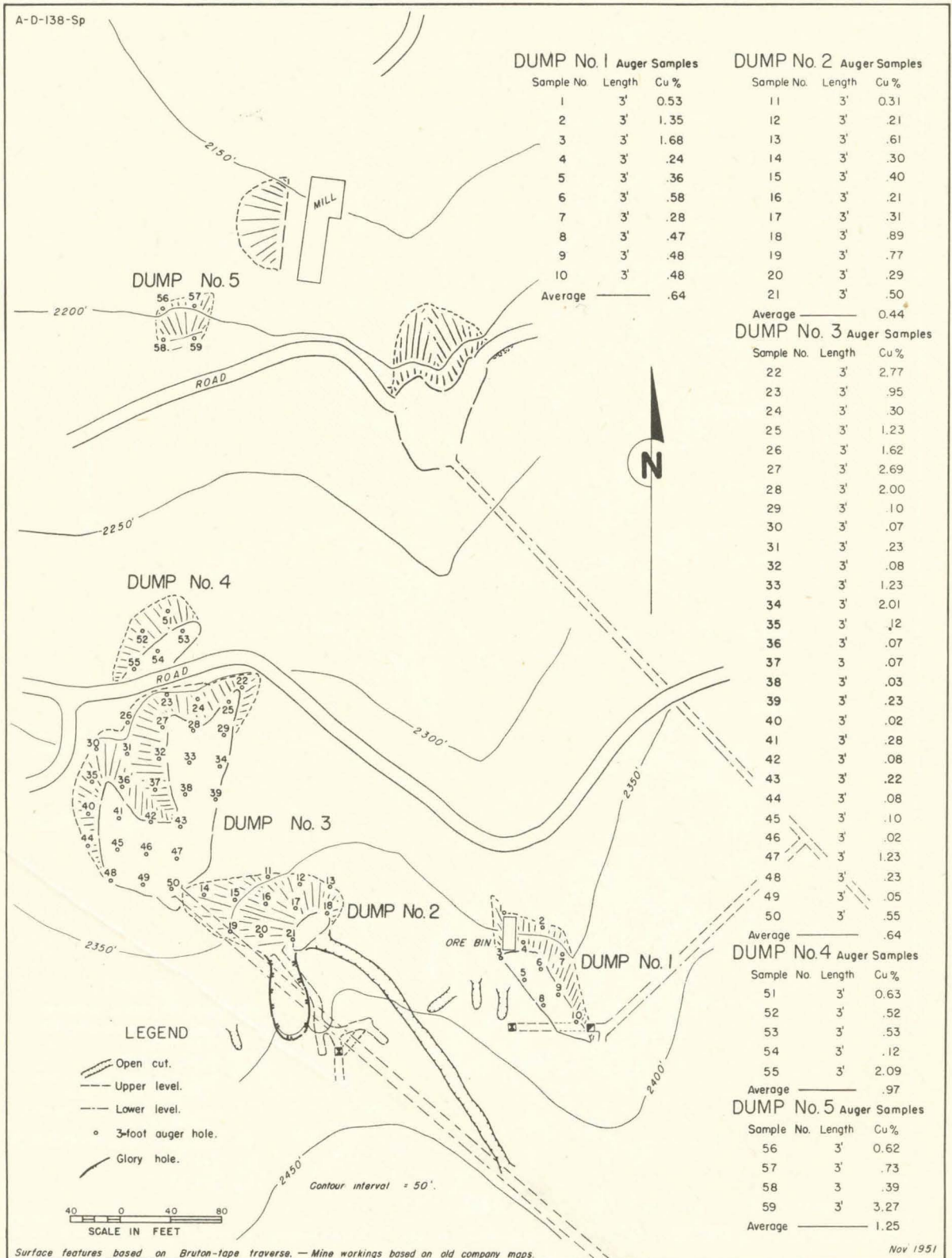


Figure 12. - Assay plan, Waldo mine dumps, Josephine County, Oreg.

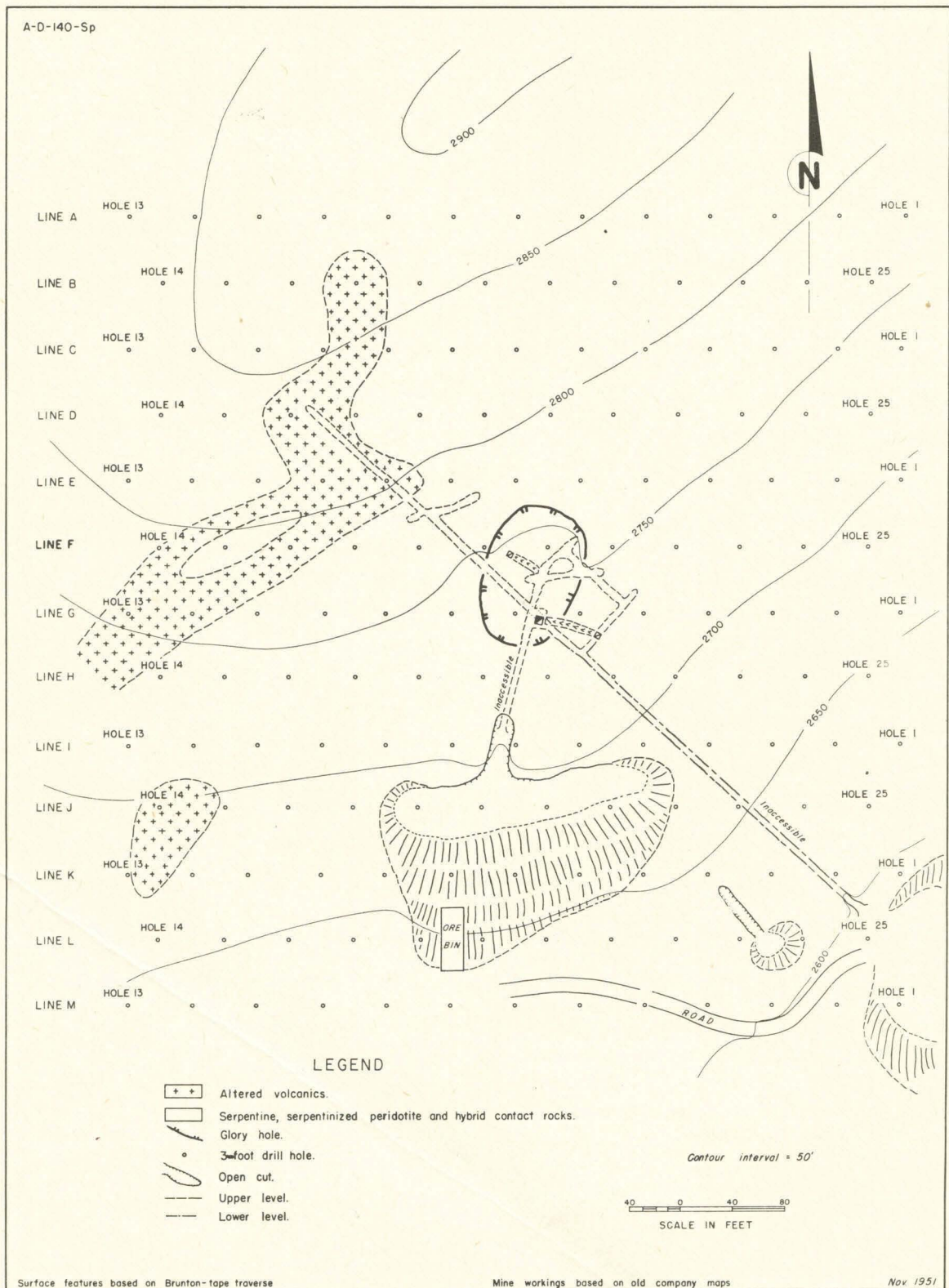


Figure 14. - Plan of surface, Lytle mine, Josephine County, Oreg.

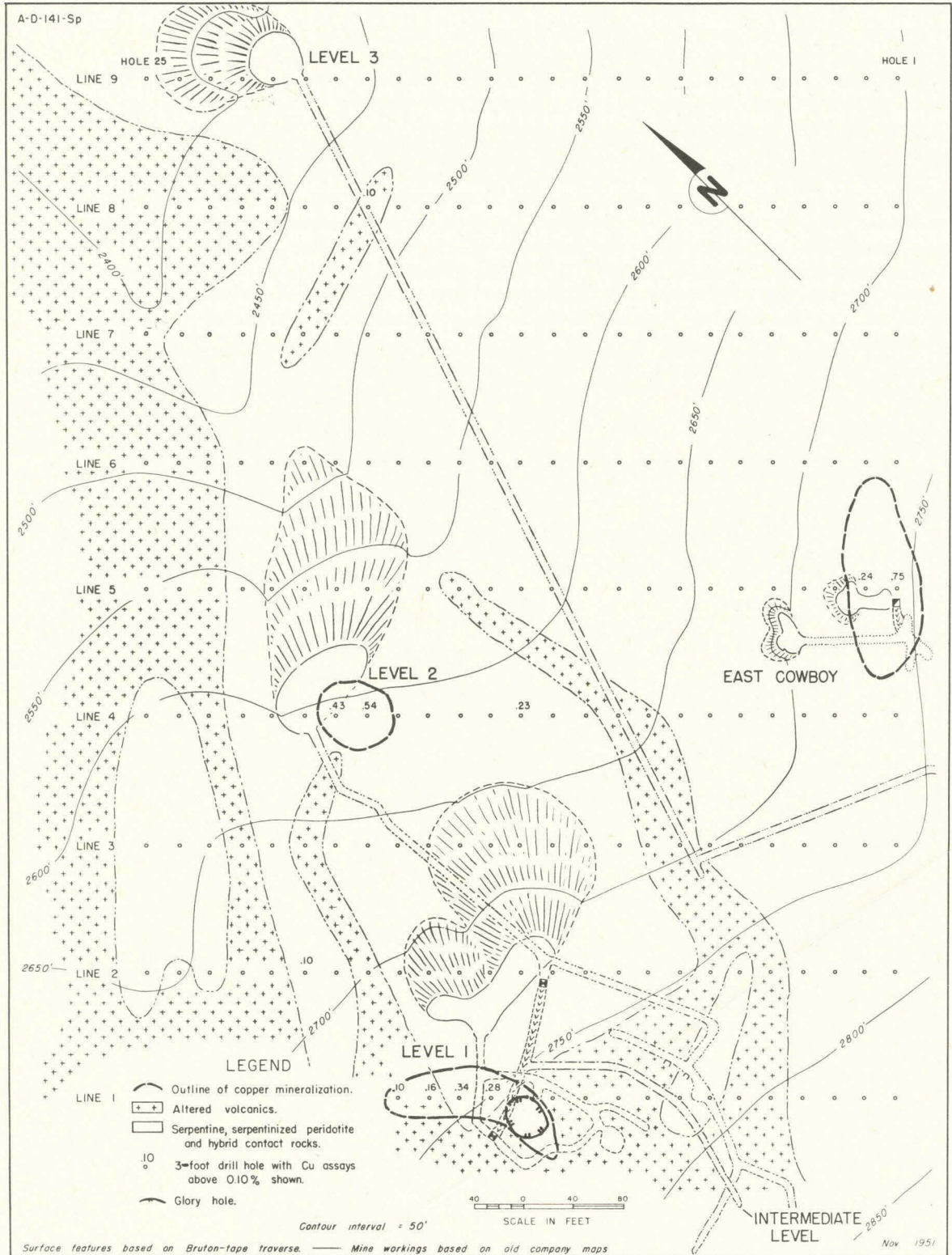


Figure 15. - Plan of surface, Cowboy mine, Josephine County, Oreg.