

R9W 8W

OEC

PUBLIC DOMAIN

25

30

JOSEPHINE
COUNTY

PRIVATE LAND

PRIVATE LAND

36

OEC

31

STATE

LAND

BOARD

WOODCOCK MT

JOSEPHINE, COUNTY

T 39 S

USFS

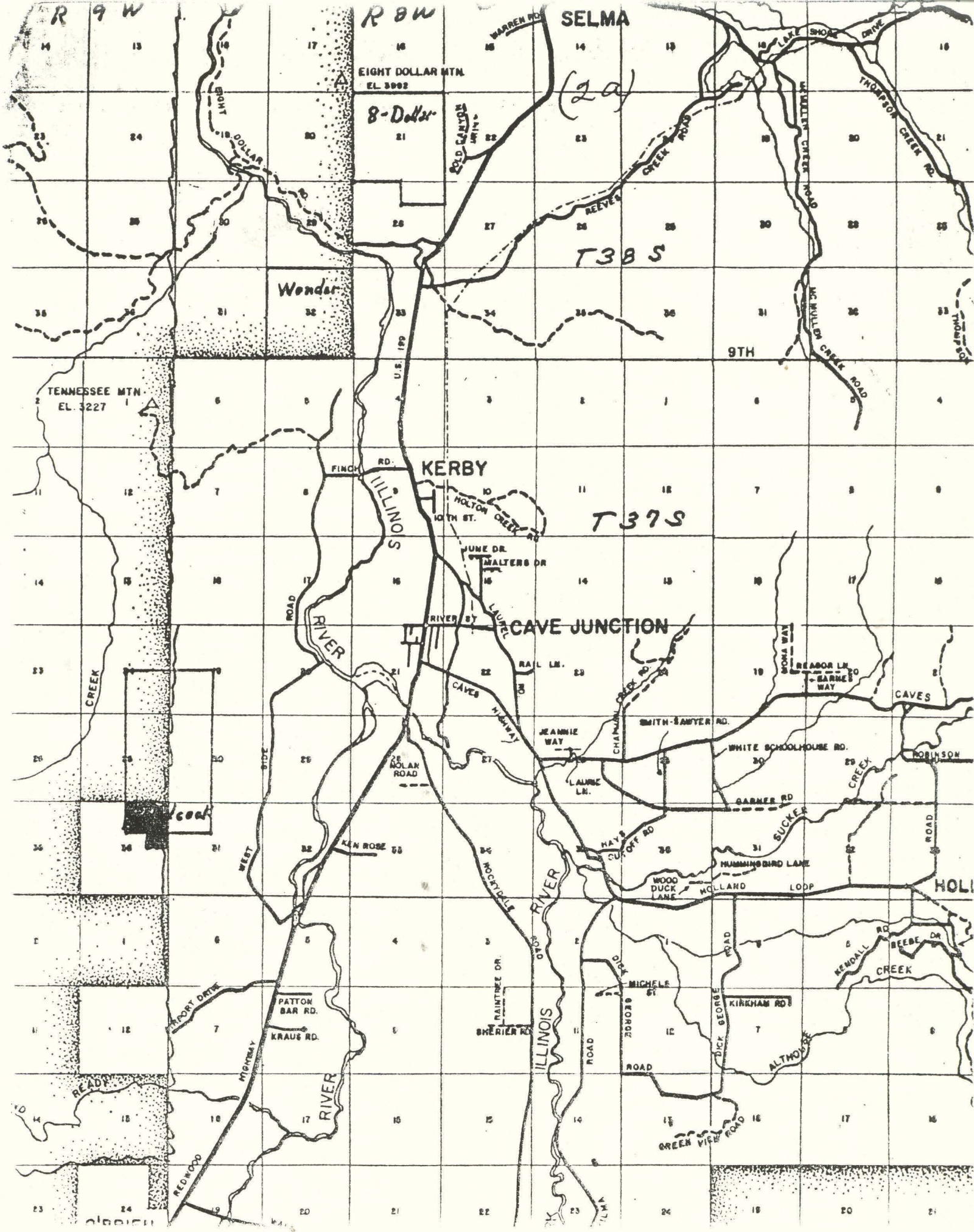
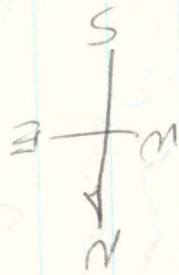


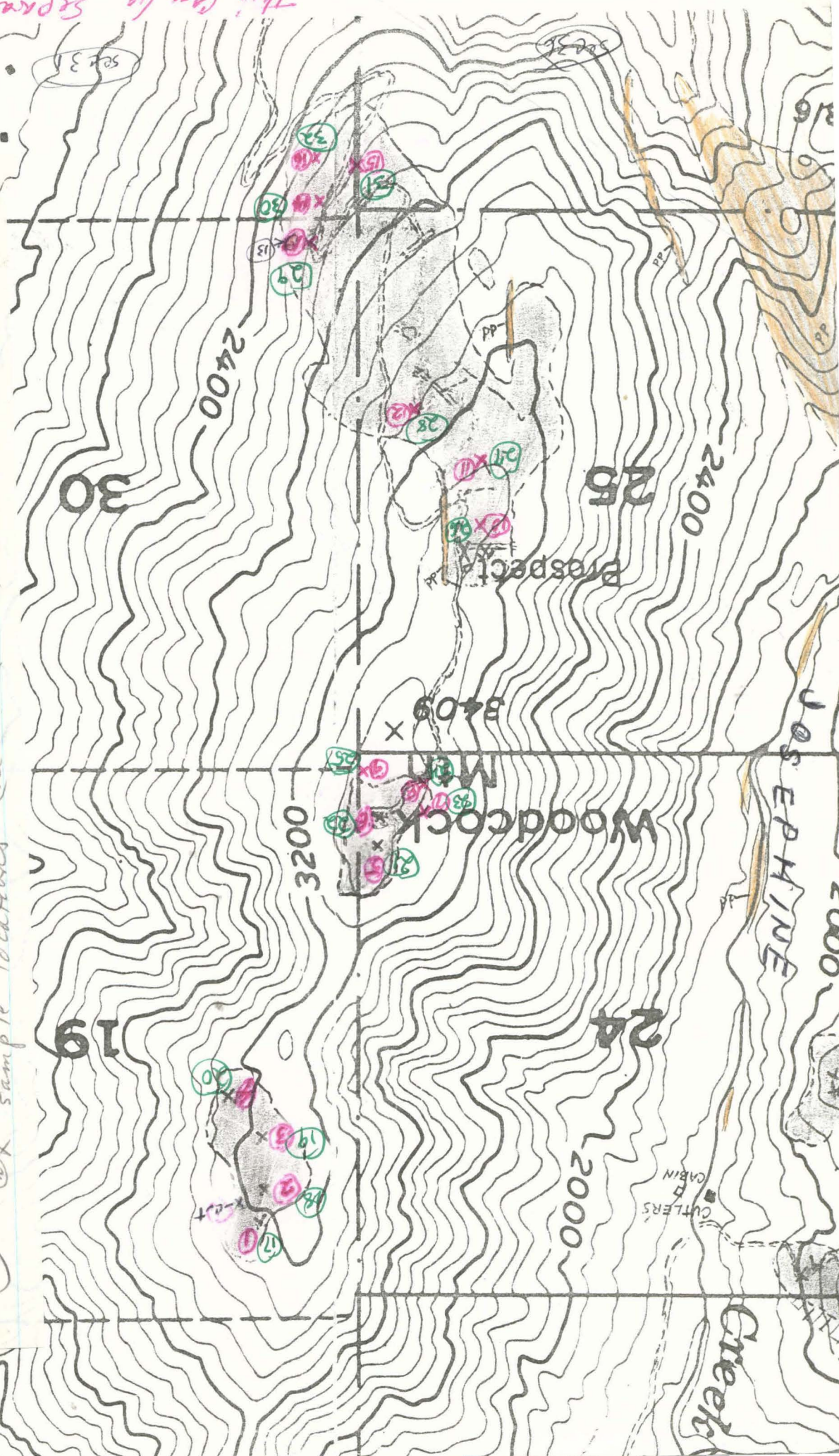
Figure 14 Geologic map of Woodcock Mountain, tateite deposits

- areas of ^{nickel-bearing} tateite
- diabase and related dikes
- psidolite and serpentinite
- ⊗ sample locations (see table 17)

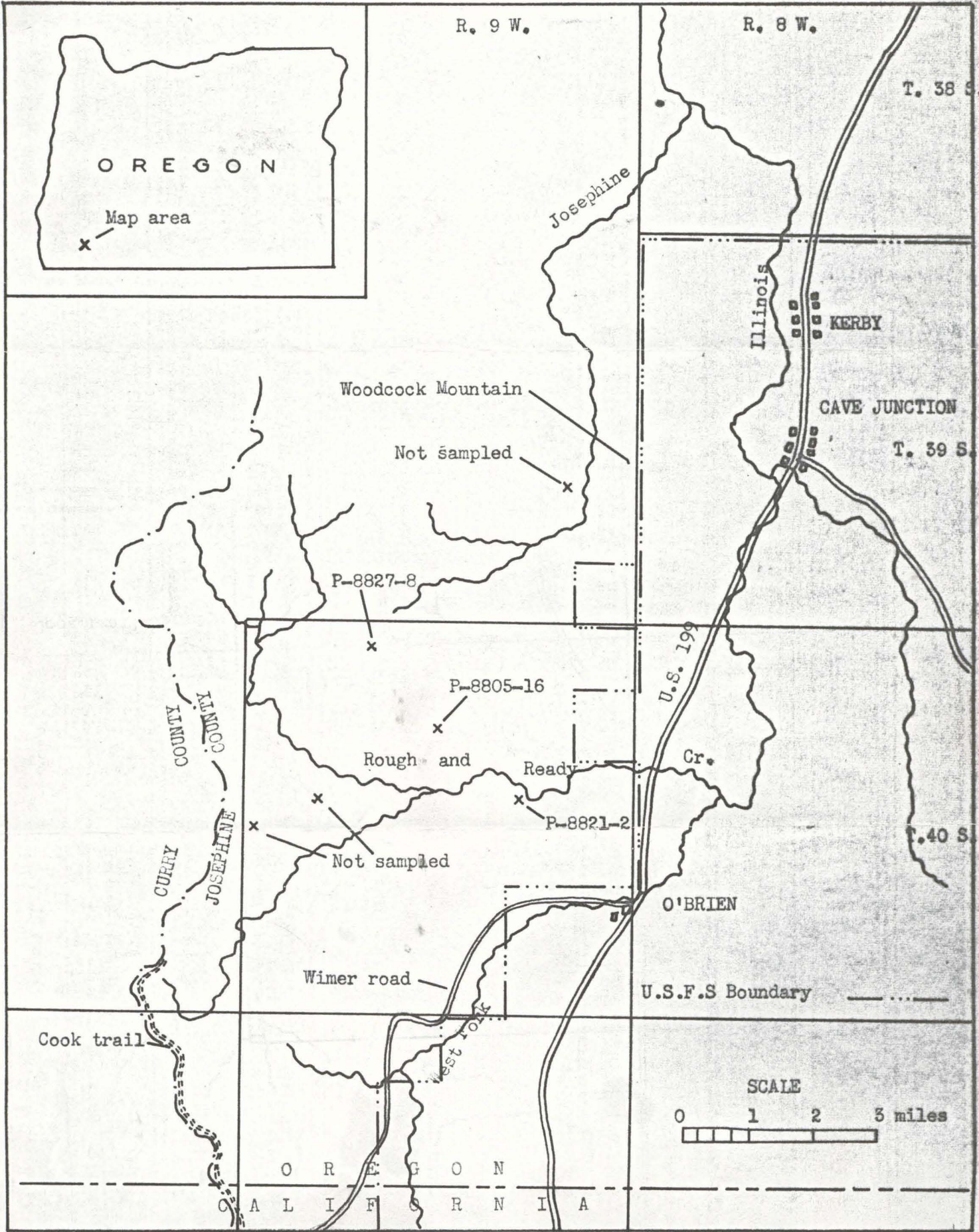


WEST

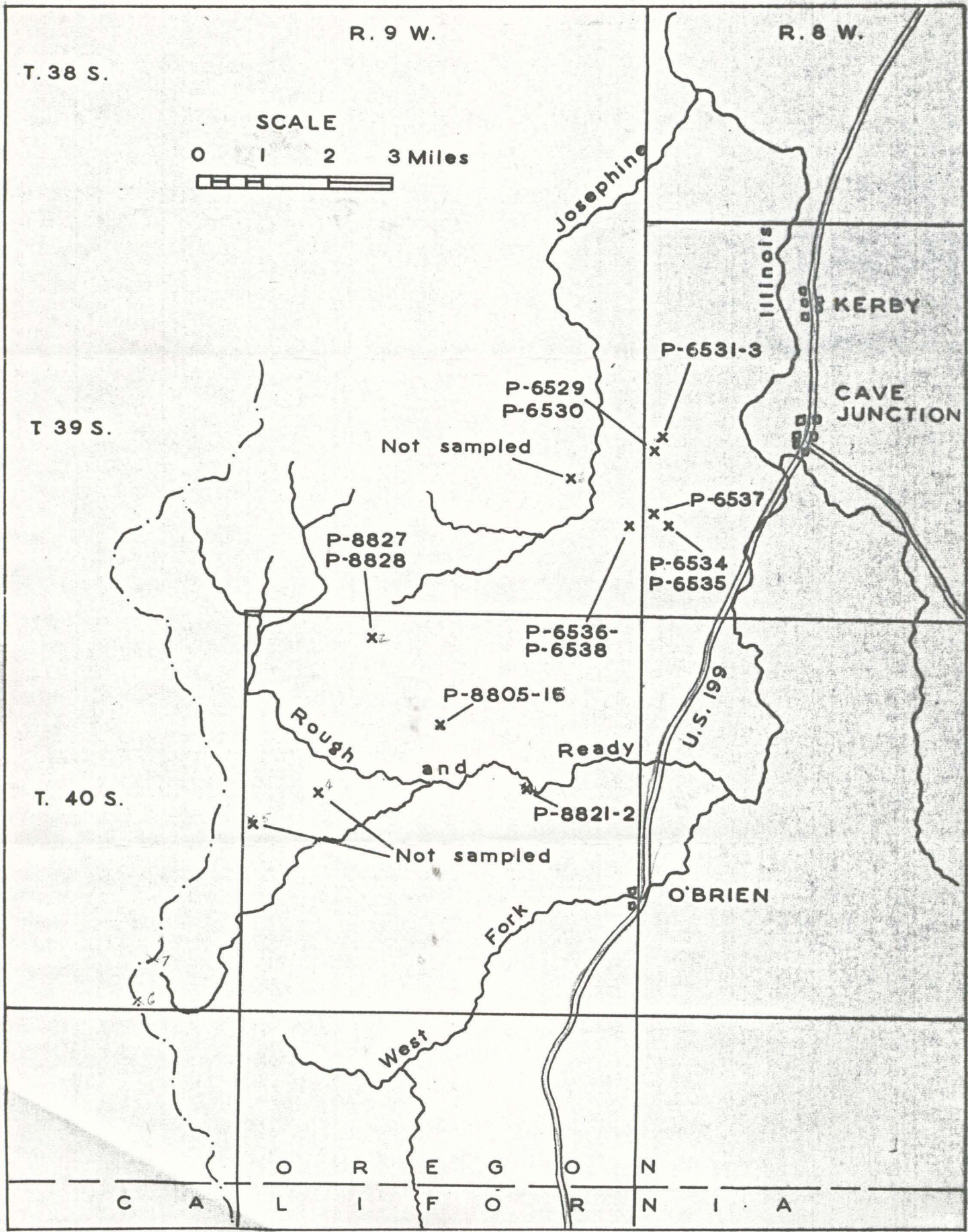
This can be separate map



(T395, R.849W.)



Josephine County Laterite Areas Checked in 1949



JOSEPHINE COUNTY LATERITE AREAS CHECKED, 1948-1949