

UNITED STATES  
DEPARTMENT OF THE INTERIOR  
GEOLOGICAL SURVEY

(DIAMOND LAKE)

*wet tuff*

*dacite/andesite  
Rock sample*

122°00'  
43°00'

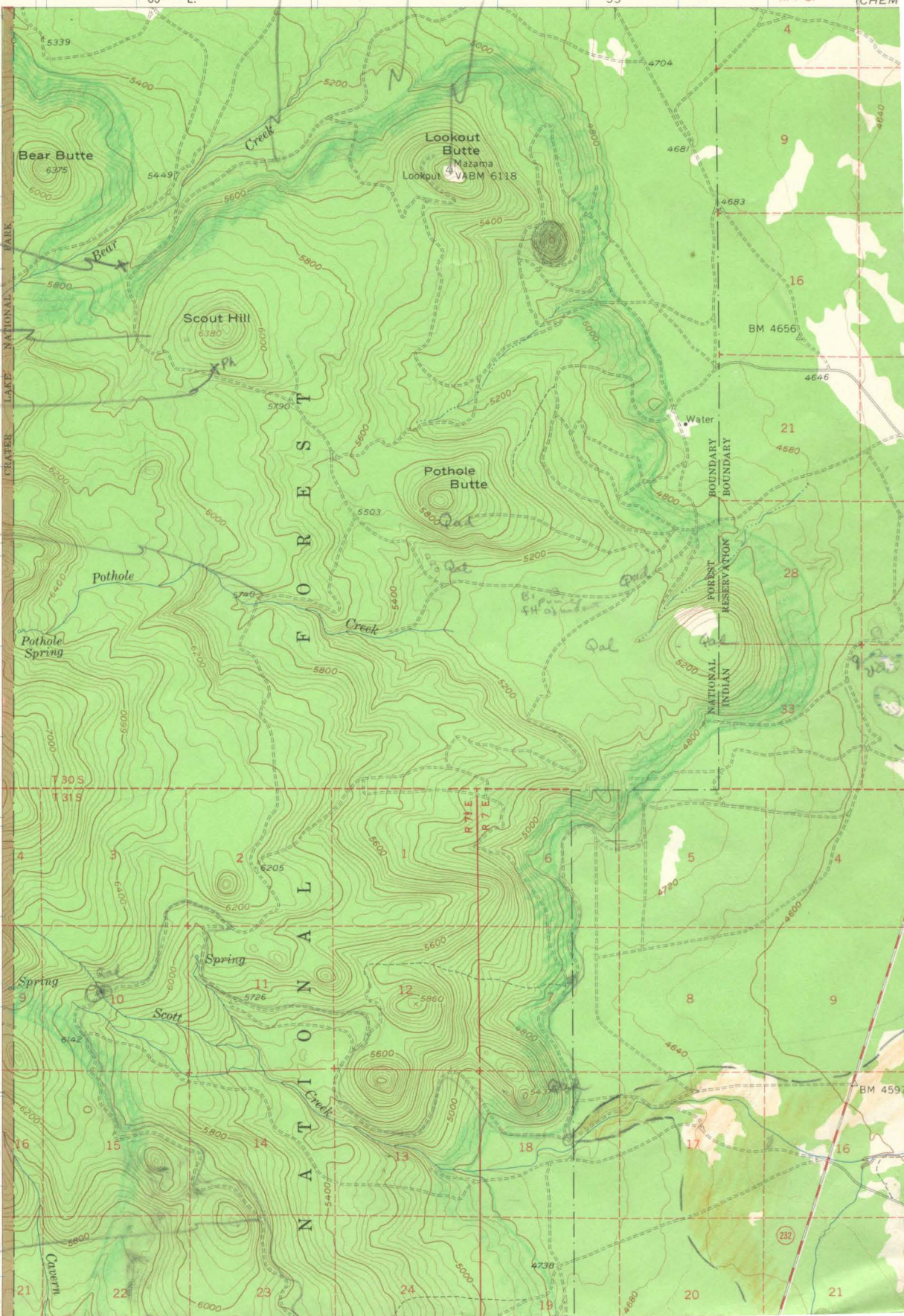
583000m.E.

55'

R. 7 E.

(CHEM)

476000m.N.



*pumice  
wet tuff*

*dacite*

*Vert. flow banded  
sprubitic and dac*

*Qal*

*Qal  
B. p. and  
FH as shown*

*flow banded  
dacite*

KE NATIONAL PARK AND VICINITY

NATIONAL PARK AND VICINITY

NATIONAL INDIAN RESERVATION

CRATER LAKE NATIONAL PARK

55'

R. 7 E.

R. 7 E.

BM 4597

(232)