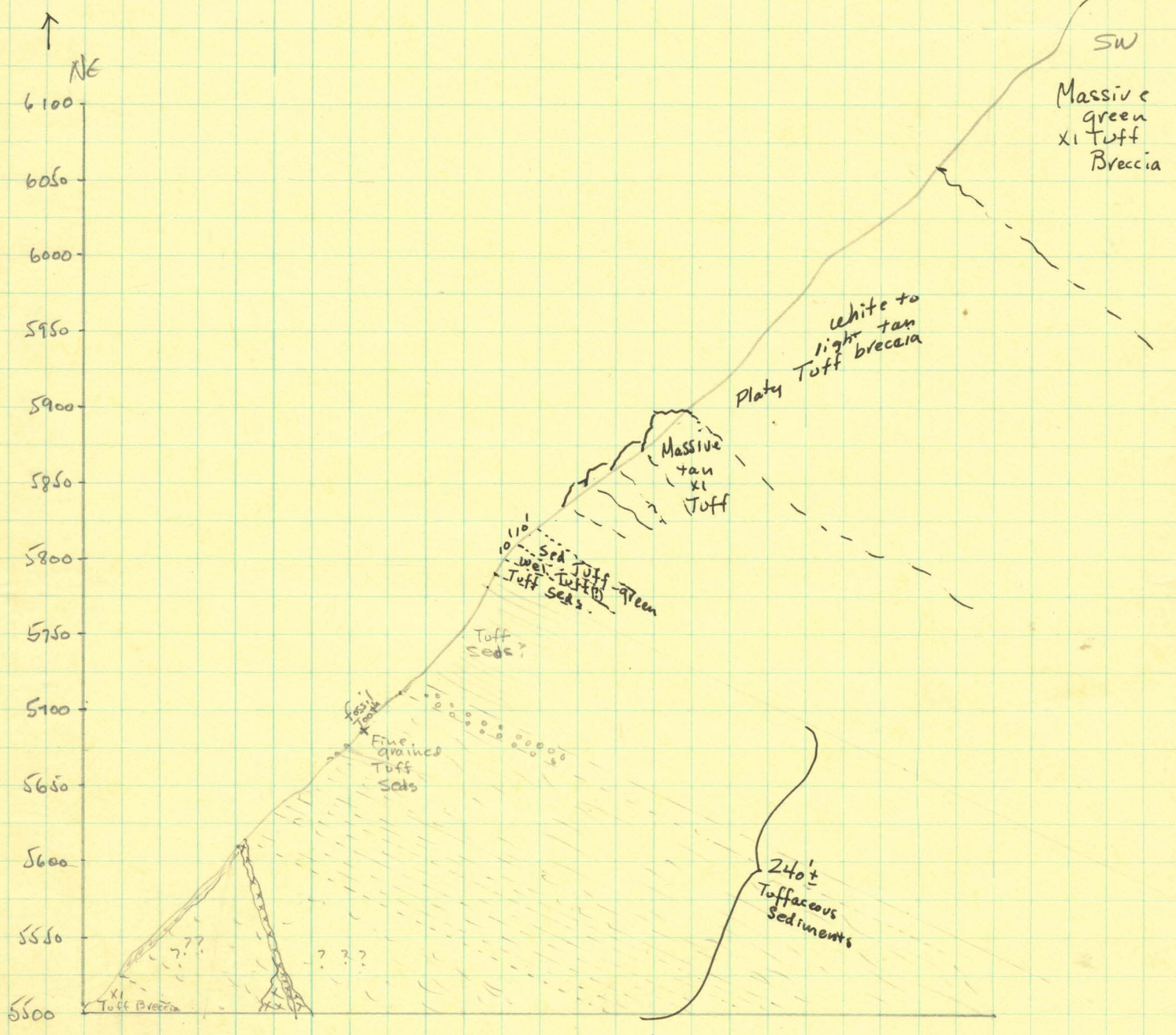


6540
5500
1040



Sketch looking West:

Basalt very
irregular surface!



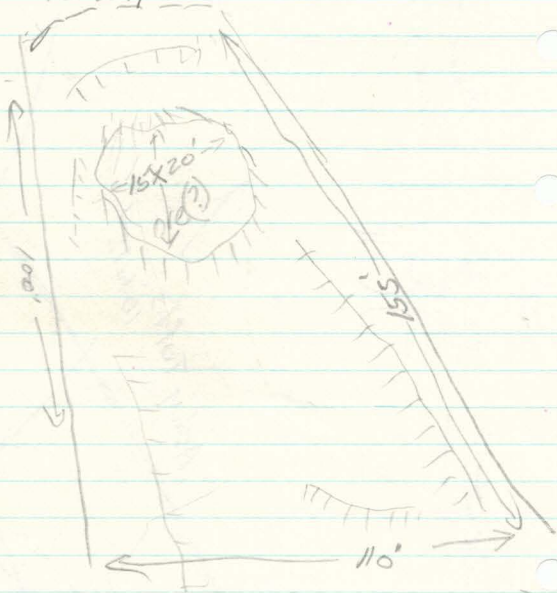
Ashy Tufts, 10 to 15'

Flow Bg

Secondary mineral
Assemblage - in both
→ vesicular bleached Bg

Excavation "B" N 200'

This large pit is N 75° E of cut "A"
a roughly triangular pit with
the narrow long arm pointing
to the north

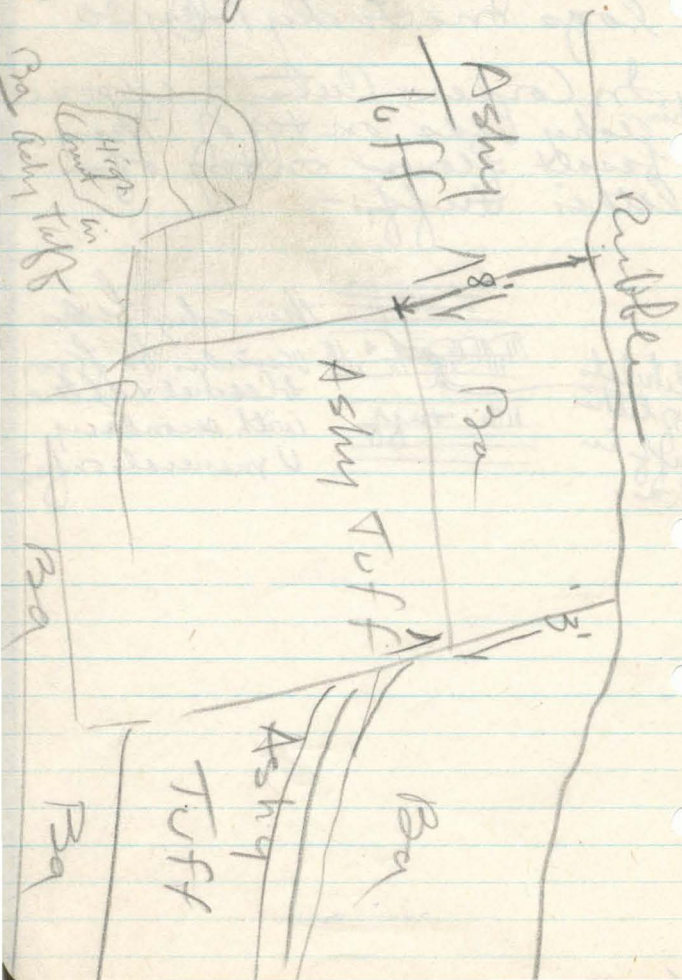


Approximate dimensions shown
on sketch.

On Topper - Bulldozer Cut

On Topper - Bulldozer Cut

Looking N75W - beds of ashly tuff strike N55E and dip to west.



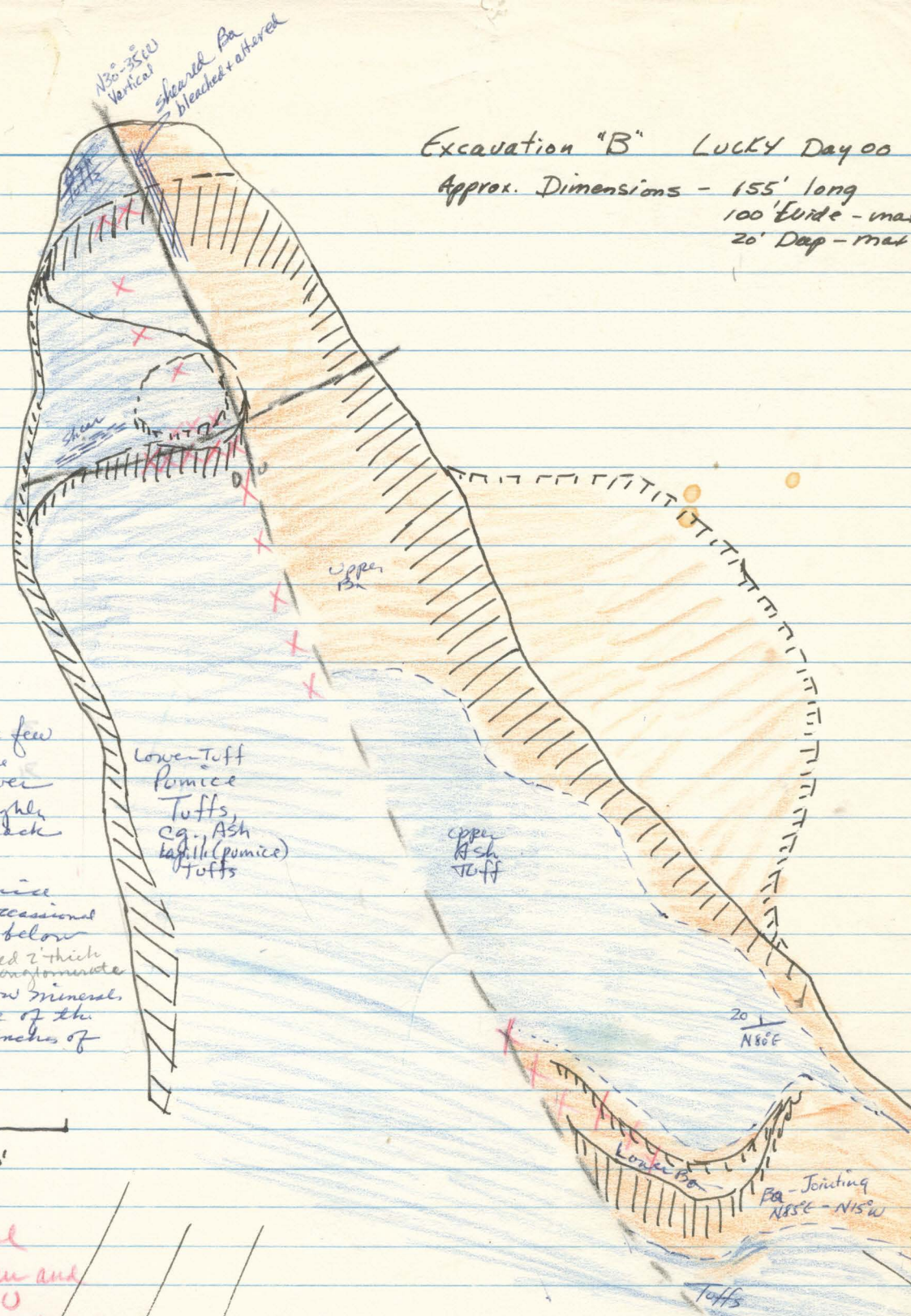
Sketch of Don Tracy's Lucky Day OO Uranium Claims

Thomas Creek - Sec. 26, 35, T. 37S., R. 18E

Scale - 1" = 880'



Excavation "B" Lucky Day 00
 Approx. Dimensions - 155' long
 100' wide - max
 20' deep - max.



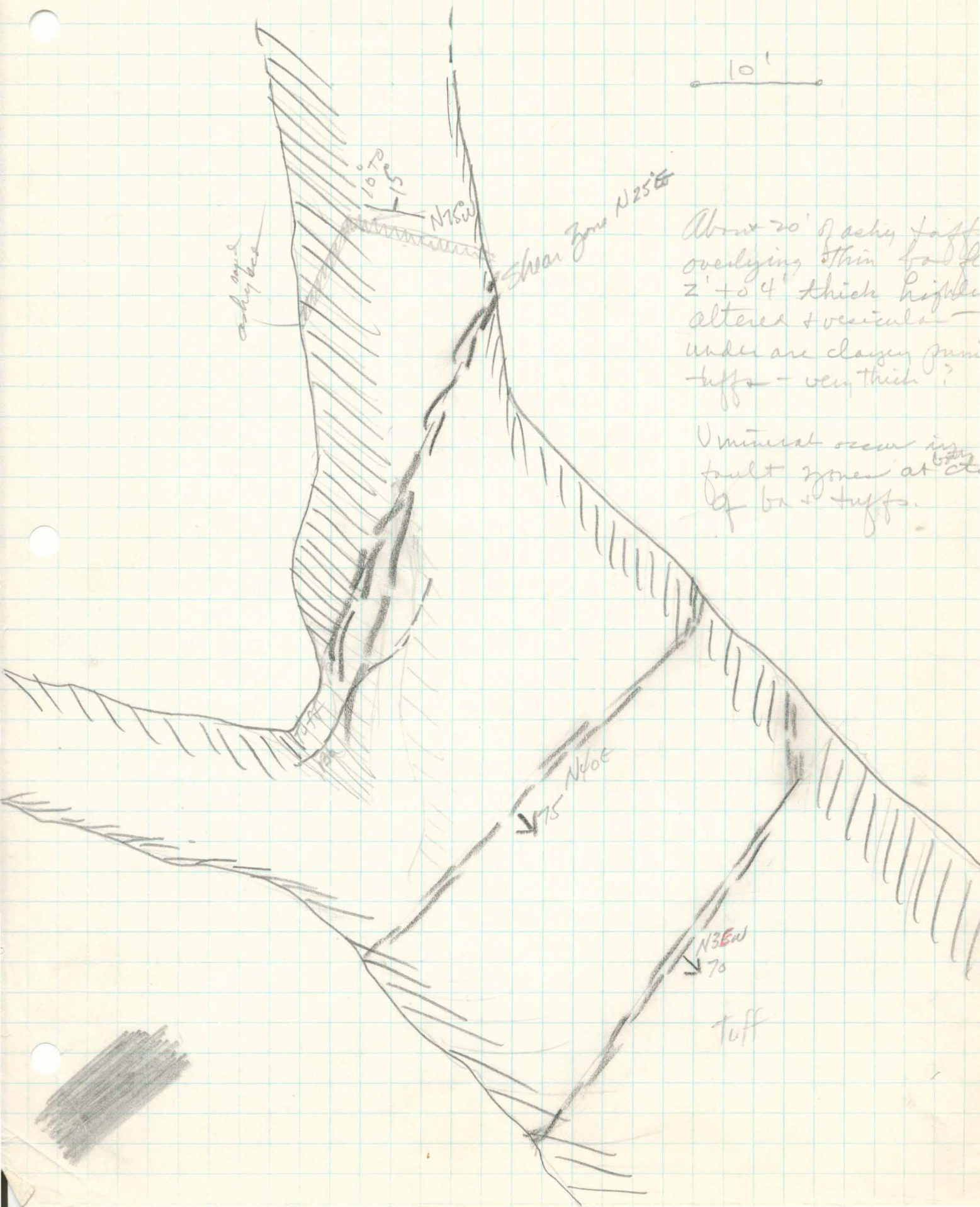
Blue - thin Ashy tufts - from a few inches to 10' thick - these lie between Basalt flows - lower black vesicular - bleached & highly altered - upper - dense black with slight alteration.

Lower tuff - coarse - pumice capilli - sandy beds - occasional coarse beds - these are below the vesicular basalt - 1 bed 2' thick
 Secondary U - green and yellow minerals occur mainly at the base of the Ashy tufts and upper few inches of the vesicular basalt

Scale - 1" = 20'

XX - higher than normal radioactivity - green and yellow secondary U minerals in both tuff + Ba.

10
130' long



ashy sand
ashys bed

Shear Zone N25°E

About 20' of ashys tuff
overlying thin bedded
2' to 4" thick highly
altered + vesicular -
under are clayey pumice
tuffs - very thick?

Mineral occur in
fault zones at ^{base} of
of bas + tuffs.

75° N40°E

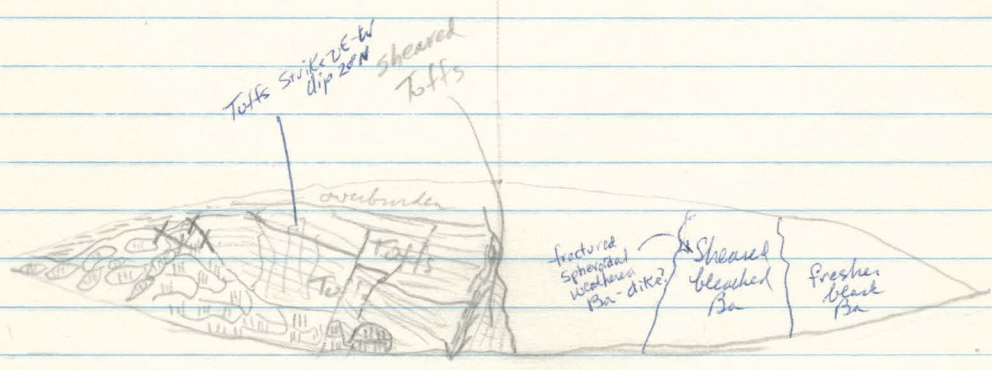
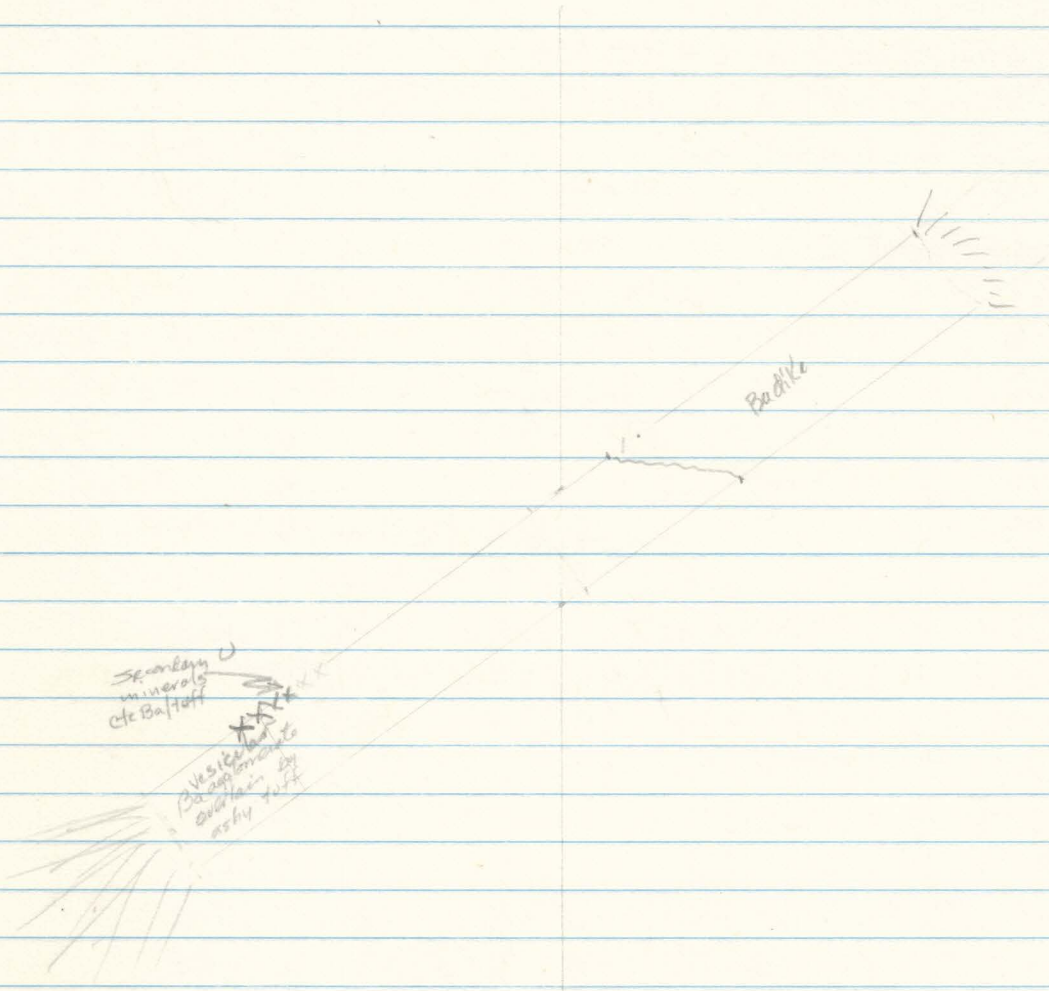
70° N35°E

Tuff



19
5
100' long

Bulldozer Cut - 100' long - trending N/55°E - 18 ft Deep



NW face of Cut
looking NW

