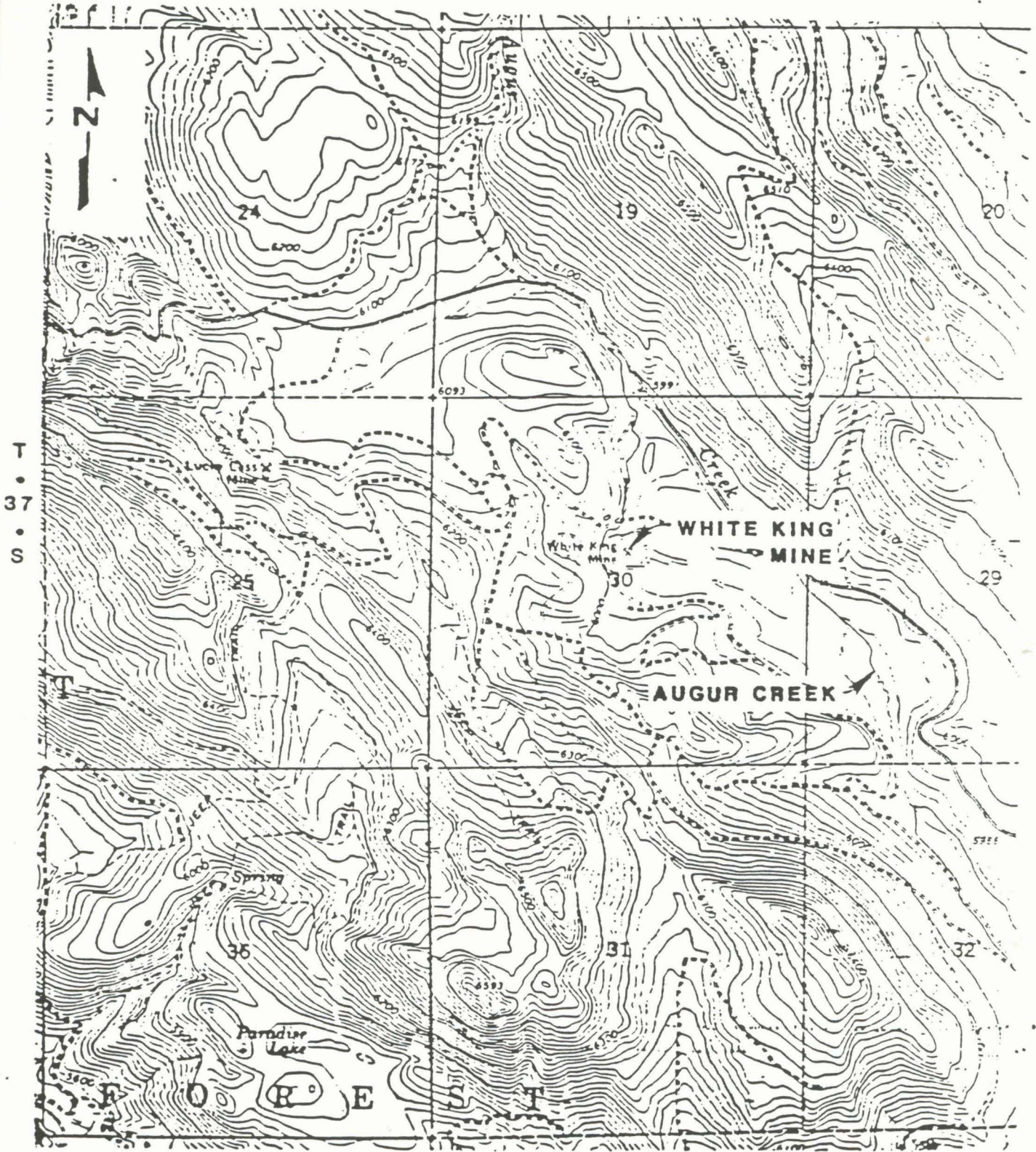


FIGURE 2.1
LOCATION OF THE WHITE KING MINE

R-19-E



REF: USGS COX FLAT QUADRANGLE OREGON 7.5 MIN. SERIES, 1980



**FIGURE 2.3
TOPOGRAPHY OF WHITE KING MINE AND VICINITY**

Low grade stockpile @ reliable for

11/11/80

Photo I

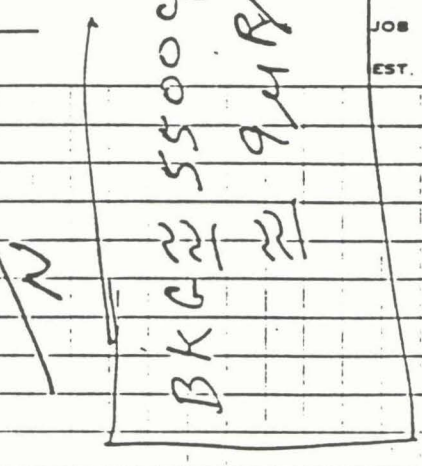
measured full 1988

x 298 (198)
 x 255 (167)
 x 162 (98)
 + 204 (130) x 191 (121)
 + 140 (84)
 + 124 (72)
 x 199 (127)
 x 195 (124)
 x 157 (96)
 x 91 (48)

- ATV readings 5×10^3 (CPM)
 - Dist. between X's $\approx 100'$

() \Rightarrow $u R/h$
 cpm $\times 10^3$

Micro radiograph



BKG \approx 5500 cpm
 \approx 94 R/hr

Clumps of ore in the
 pile have been
 measured @ ≈ 100 cpm.

@ 5 x 5 background, cpm
 should be cut and read



COMPANY

JOB

FORM ENG 6-A/74

EST. BY

DATE

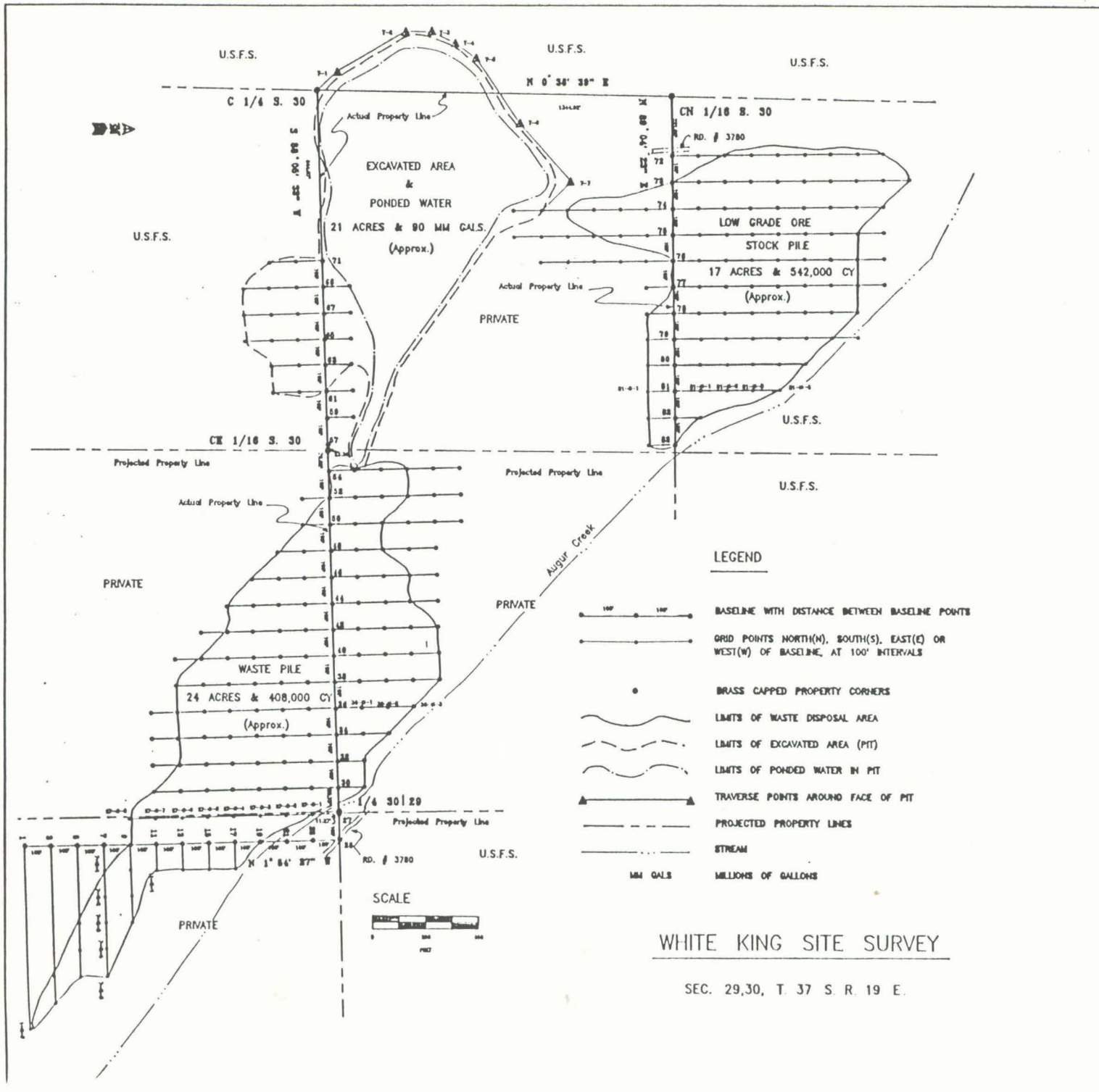
LINE II

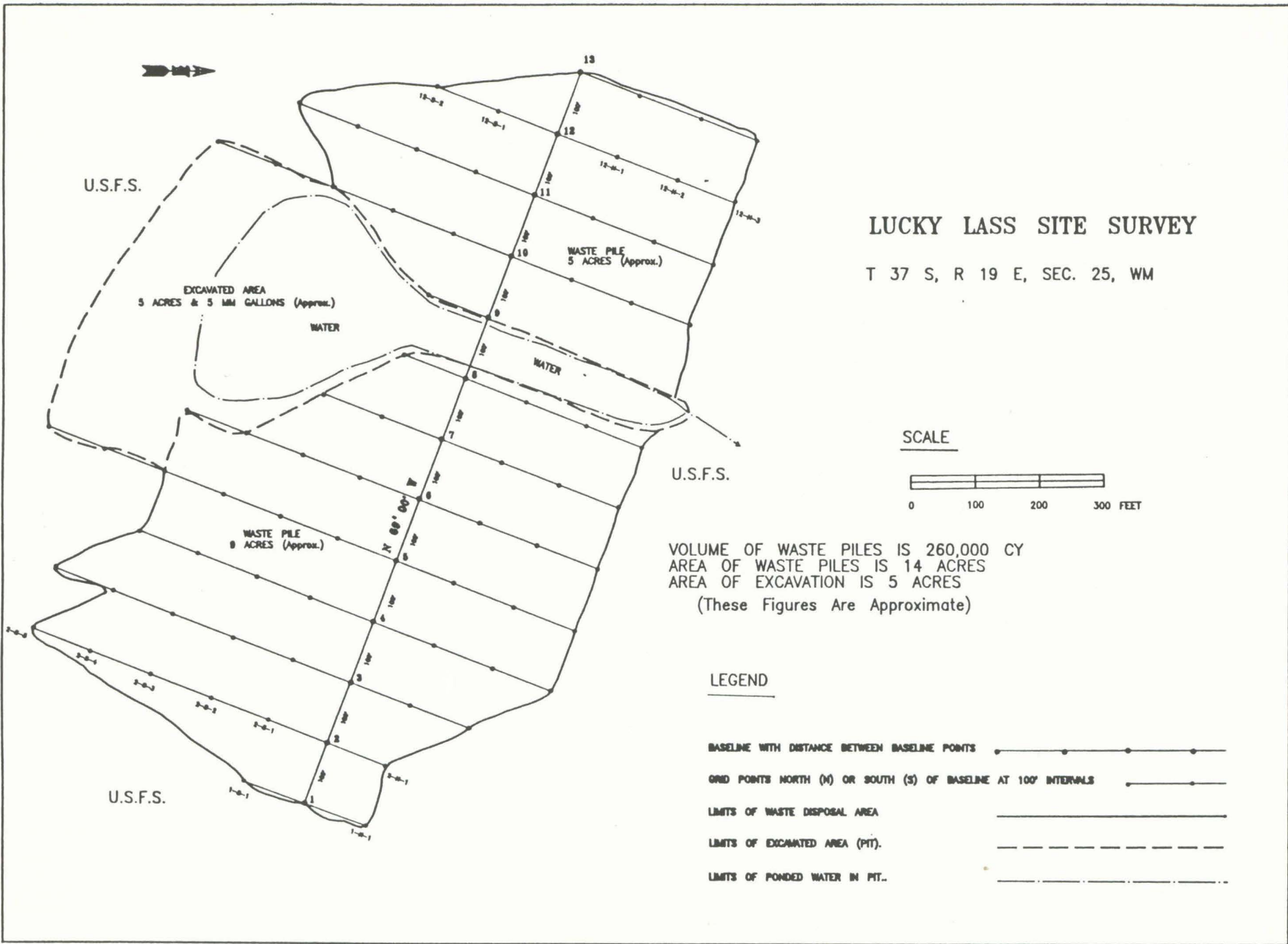
recovered fall 1986

Occulusion Stockpile @ white hole

CPM X 103
DUB/HR







U.S.F.S.

EXCAVATED AREA
5 ACRES & 5 MM GALLONS (Approx.)

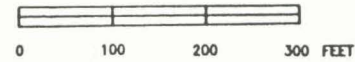
WATER

WASTE PILE
5 ACRES (Approx.)

WATER

U.S.F.S.

SCALE

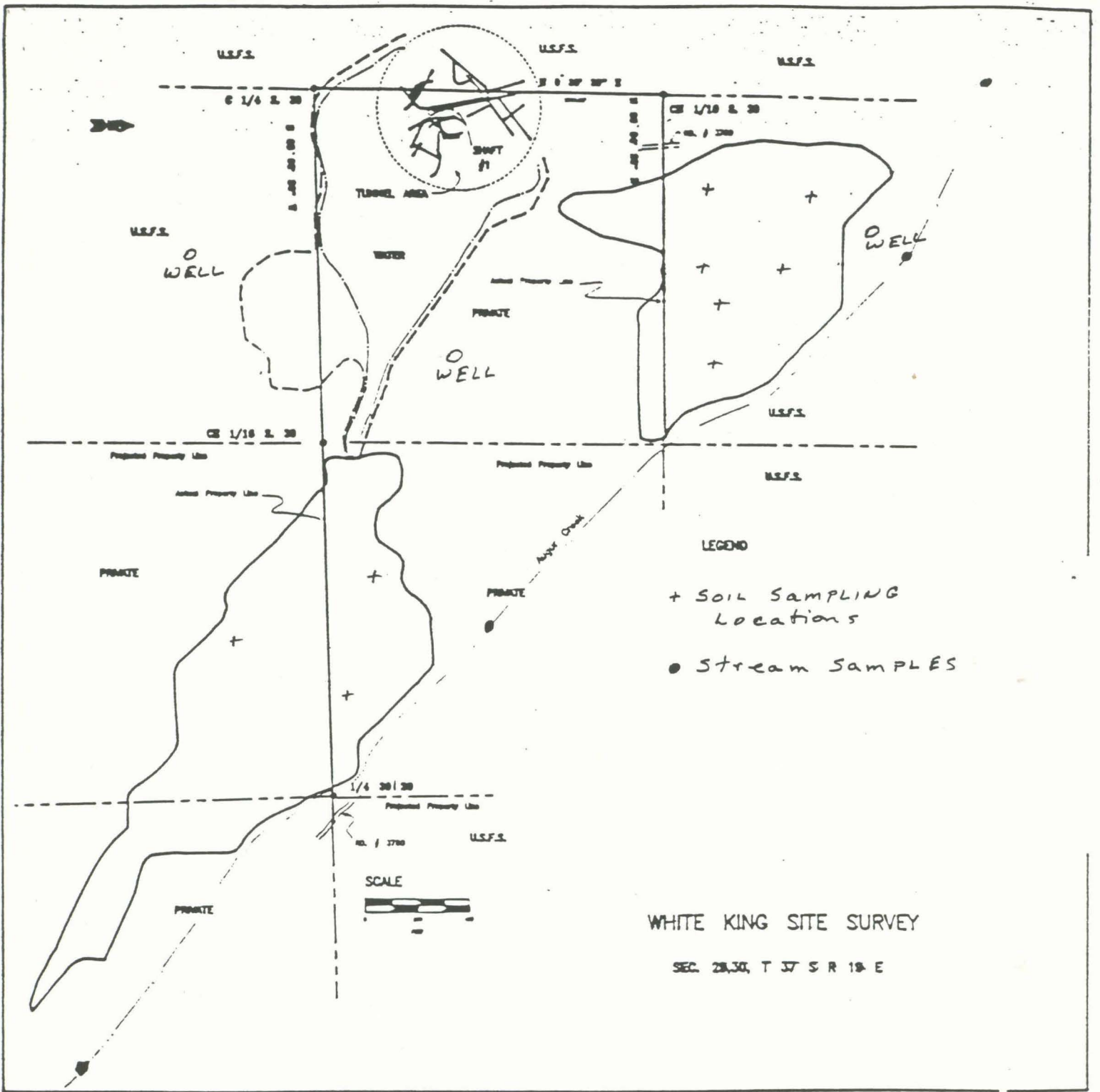


WASTE PILE
8 ACRES (Approx.)

U.S.F.S.

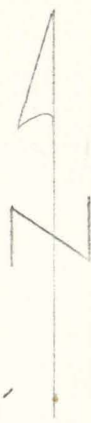
LEGEND

- BASILINE WITH DISTANCE BETWEEN BASILINE POINTS
- GRID POINTS NORTH (N) OR SOUTH (S) OF BASILINE AT 100' INTERVALS
- LIMITS OF WASTE DISPOSAL AREA
- LIMITS OF EXCAVATED AREA (PIT).
- LIMITS OF PONDED WATER IN PIT.



WHITE KING SITE SURVEY

SEC. 28, 30, T 37 S R 18 E



Scale: 1" = 600'

24	19
25	30

T. 37 S., R. 18 E. W.M.



Based upon map by G. Tyler