

cut N 30° E

Lucky Lass - As of Sept 1960

1067

N 22° E

N 75° W

40°

38°

N 25° W

1800 tons removed by Jackson Mining include 150 tons taken out by Adams, Smith, Lindsay, She

Sold 1200 Tons - in 1960
Clair Smith reports to date that \$100,000 production from Lucky Lass - \$19,000 in 196

N 60° W

0/6

Minor shear zone

Major shear zone
N 75° W
N 75° 28' W

Minor No. 2

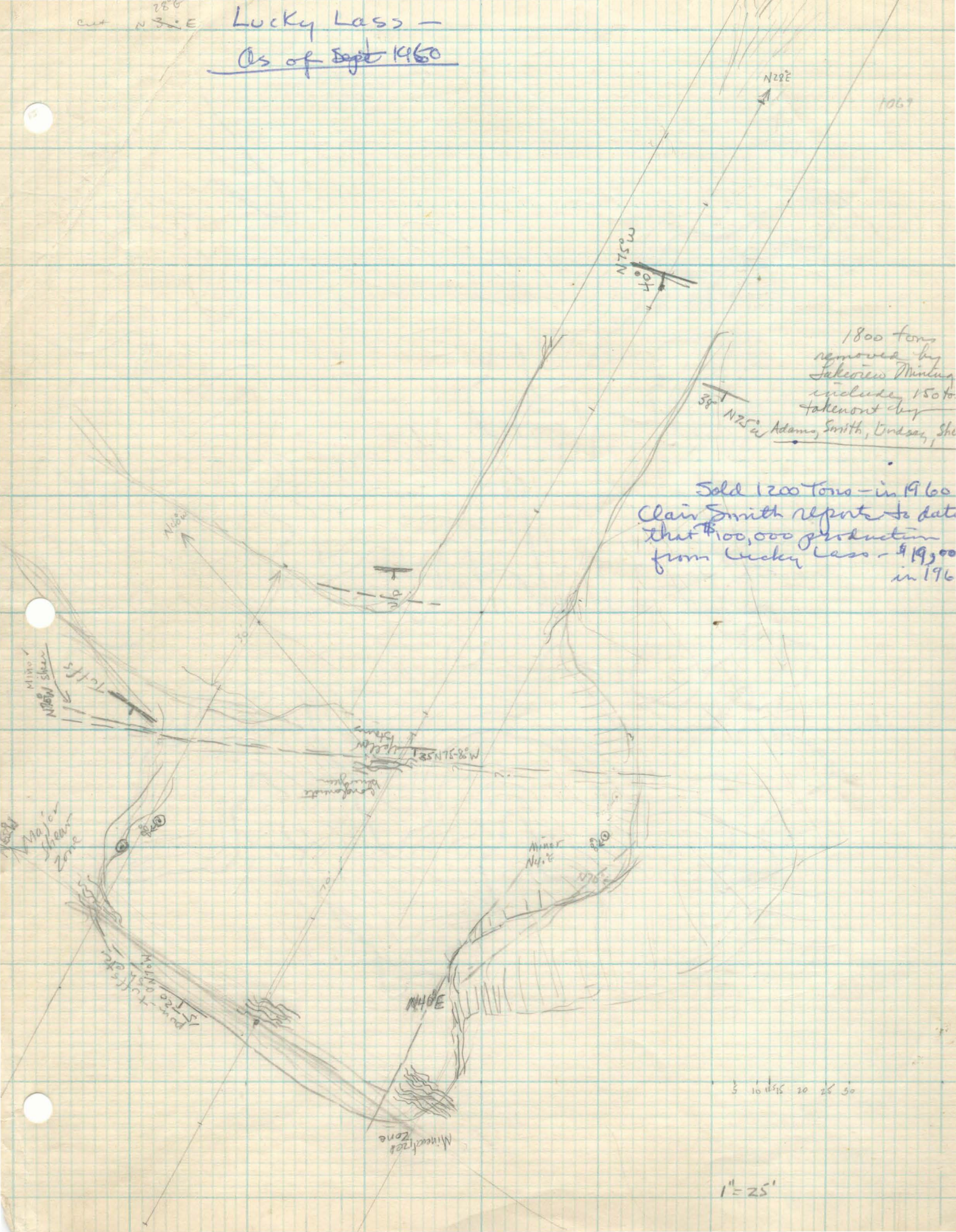
N 40° E

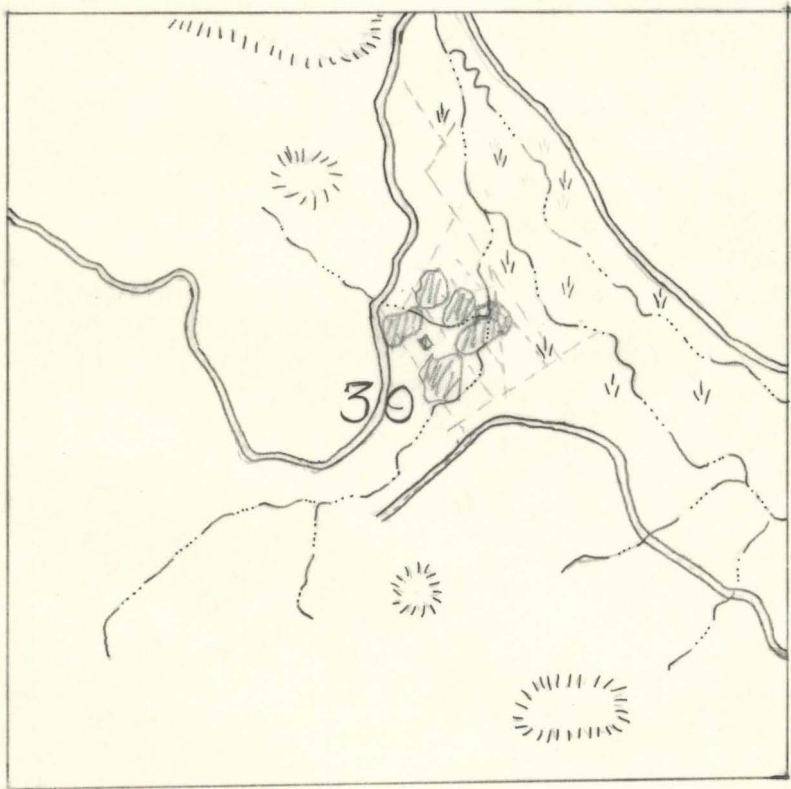
Major shear zone
N 70° W

Minor No. 2

5 10 15 20 25 30

1" = 25'





High Grade
pts - Aug. 1961

N 70 W vertical
S 10 W 25 W
S 10 W 25 W
S 10 W 25 W

Vertical
S 10 W 25 W
S 10 W 25 W
S 10 W 25 W

Gauge zone

Put mineral
as
S 10 W 25 W
S 10 W 25 W
S 10 W 25 W

Aspen trees

Lagged pits above
water level - air base
N 30 W 20 SW

Power
Line

at
Stations
etc.

5,000 W

4,500 W



Abandoned
#2 Shaft

N 5,000

N15E

Geology Sketching
Sept. 23, 1960. MJP
Water level in #2 6340'

N 4,500

Ba
Andite tuff breccia
agglomerate

Ba
Andite tuff breccia

Andite tuff breccia

WHITE KING MINE

FINAL TOPO MAP

DECEMBER 22, 1959

10 Contours

100 Scale

4,000 W

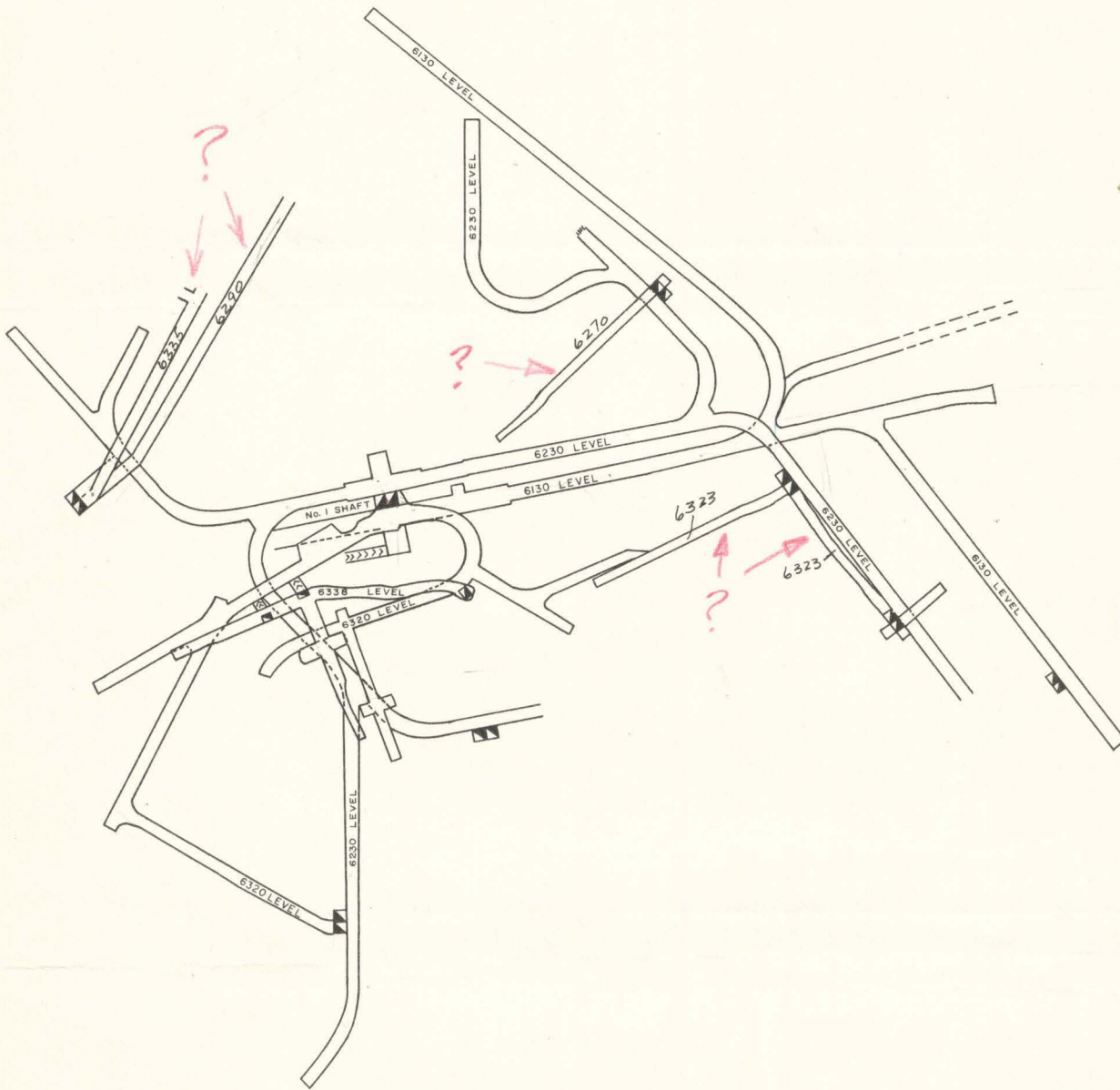
77a

Andite tuff

4300

Agglomerate

Andite tuff breccia



Scale 0 50 100 200 Feet