

2,150,000  
ORE S.

55'

N45W

No bend in Scarp

25.65'

R24E ADEL 2)

5 Meander Curve

Clump Lake  
Elev 4425'

fish 33

FISH

Badland depression  
Rudde's Pt

150

Pelican Lake

4085

4884

31

36

6

1

8

Vineyard Road

Deep

Creek

Adel

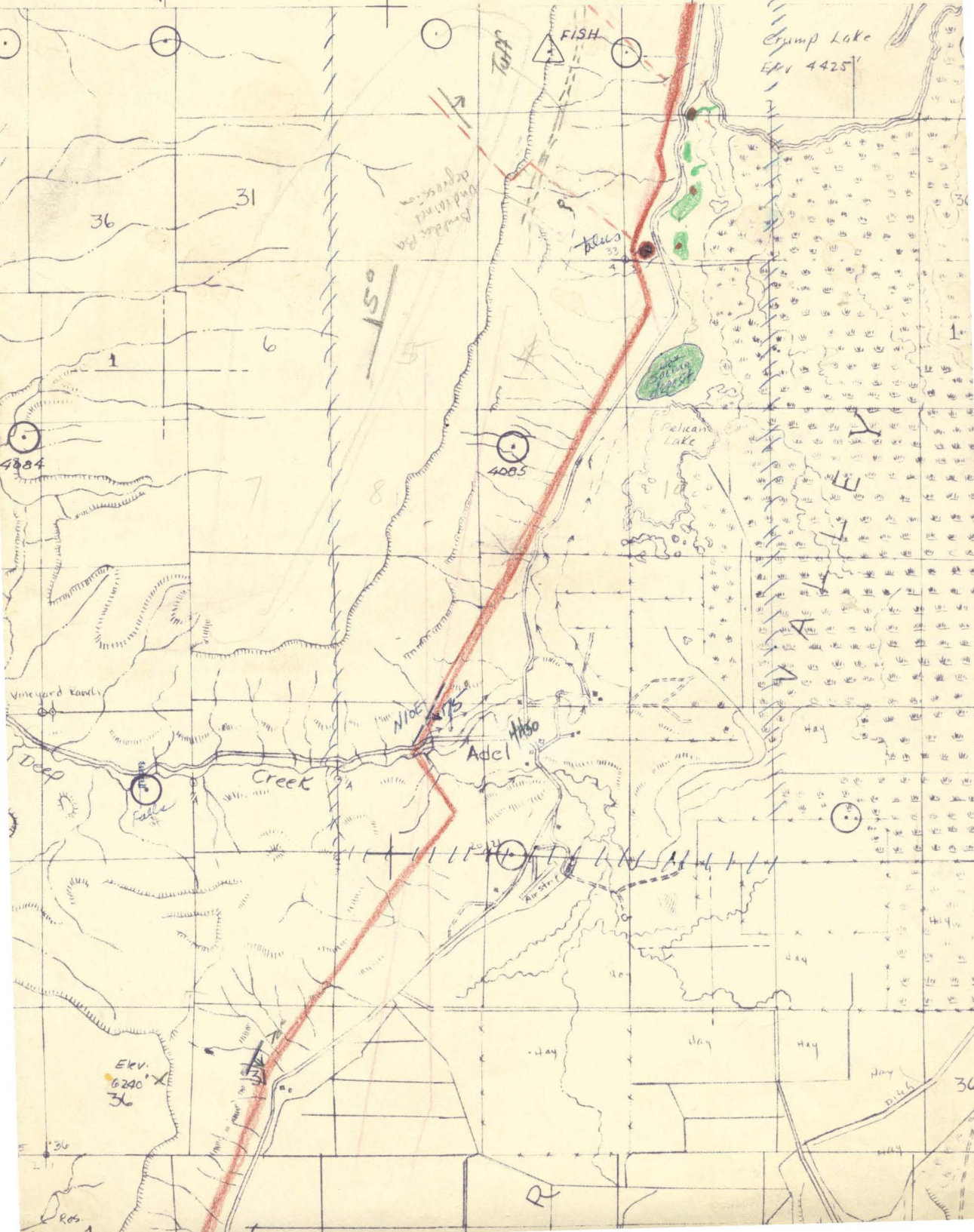
N100E

M30

Elev. 6240'  
36

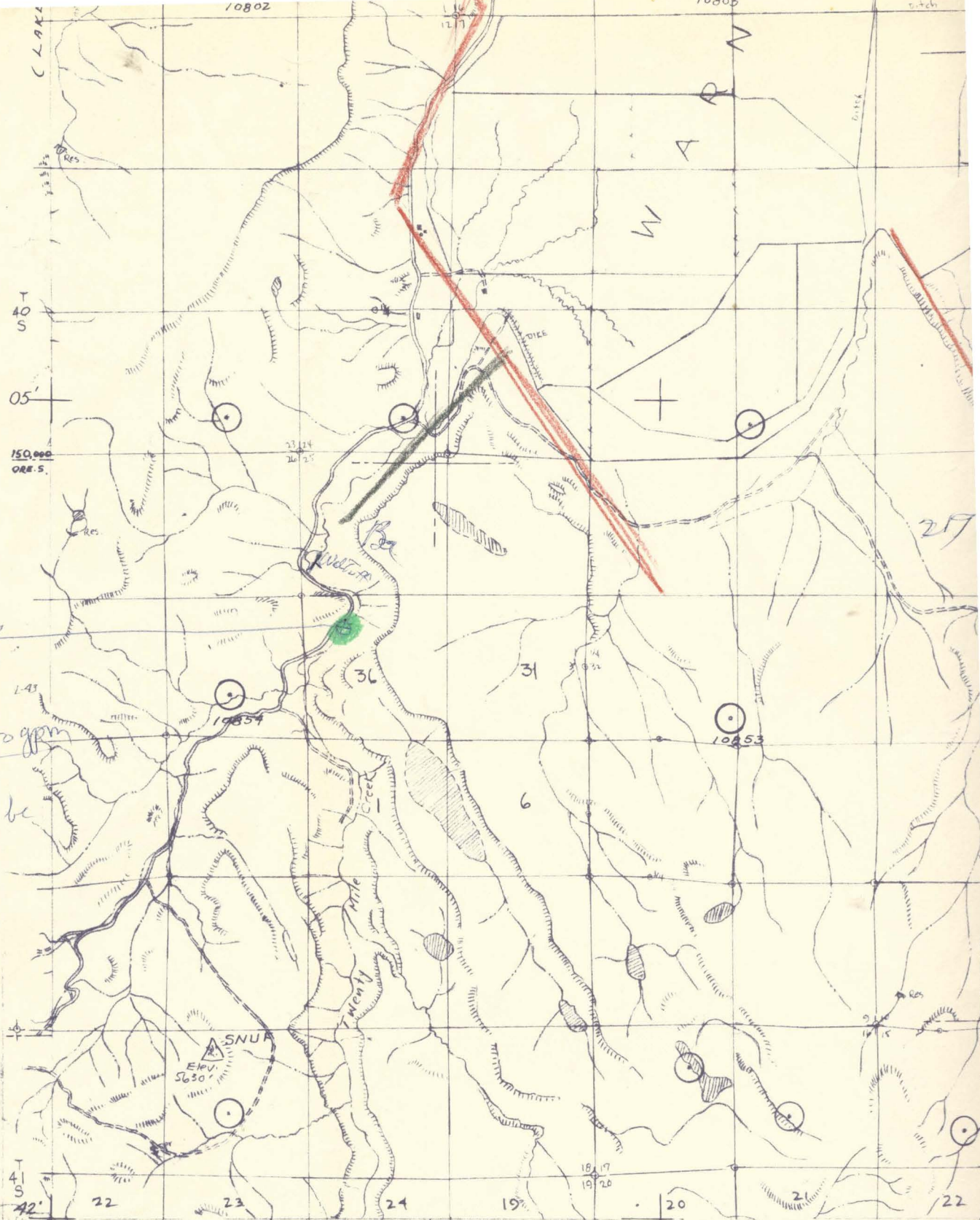
R

36





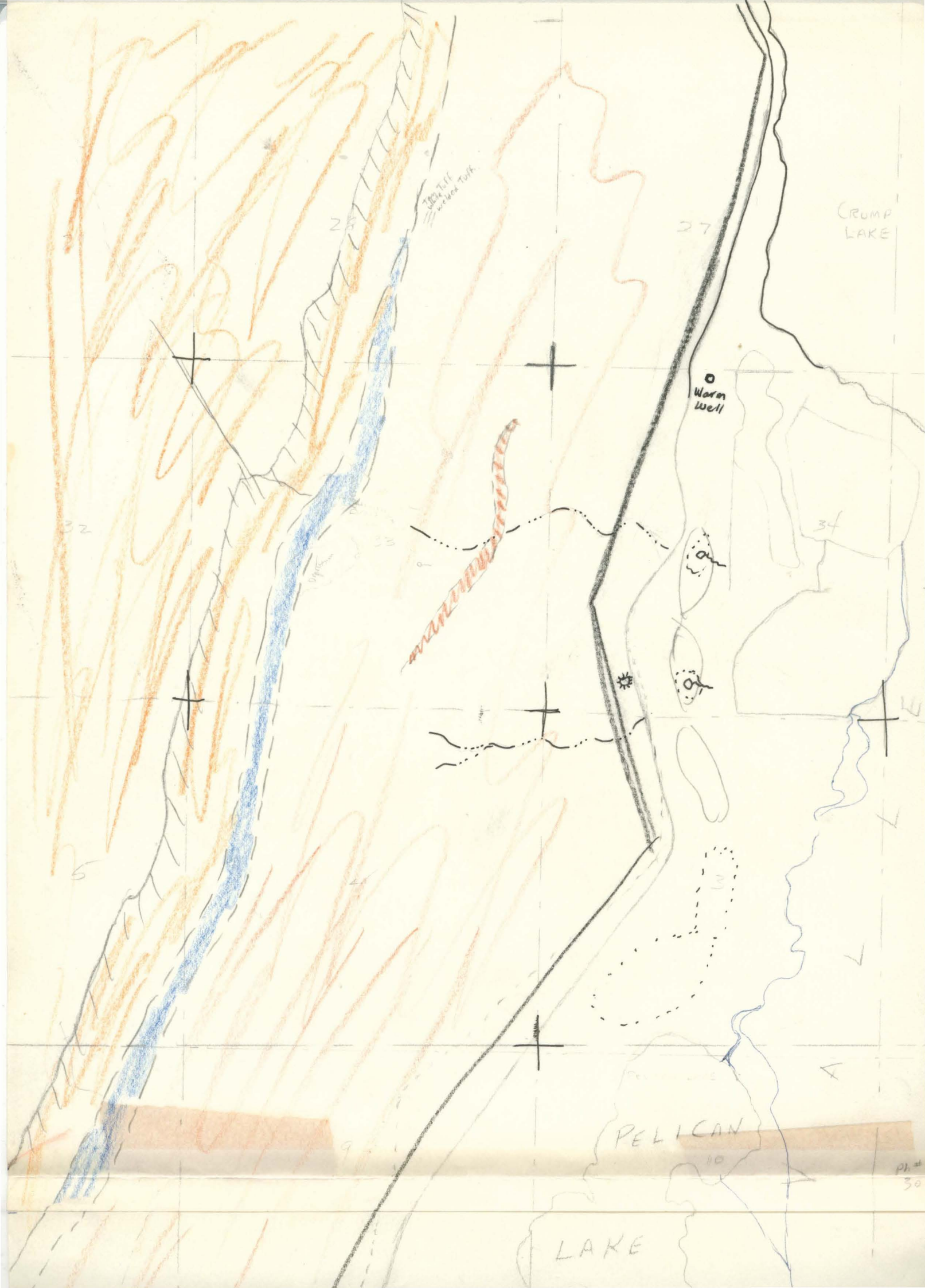
Twenty Mile  
Warm Springs  
Temp -  $\approx 95^{\circ}$   
6 springs  
flow - 50 to 100 gpm  
No  $H_2S$  -  
Bubbling may be  
 $CO_2$   
Water sweet.



R23E  
Mapped by Oregon State Highway Dept. 1957-1958  
From 1953 Army Map Service Aerial Photography, 1:60,000 AS 55  
Horizontal Control by USC & G.S., C.S.H.D.  
Polyconic Projection 1927 N.A. Datum  
State Grid, Oregon South Zone in thousands of feet  
(Nevada West Zone)  
Section lines from Public Land Surveys; found  
Corners from Grazing Division, B.L.M.

(MUD LAKE)  
R24E Scale 1

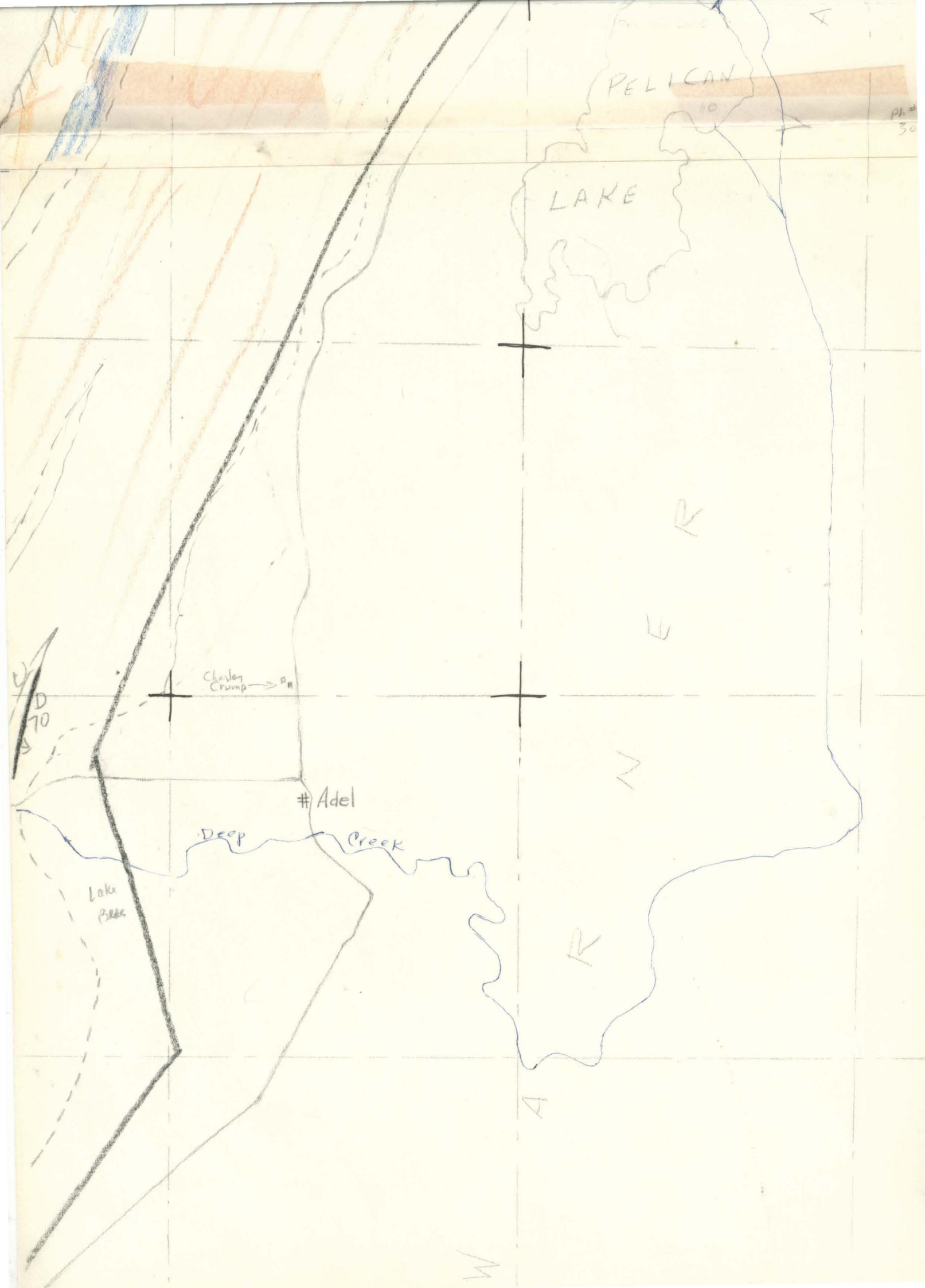




CRUMP  
LAKE

Warm  
Well

PELICAN  
LAKE



PELICAN

LAKE

# Adel

Deep Creek

Lake Pills

Charley Crump →

D 70 ↓

ph # 30

N

E

R

R

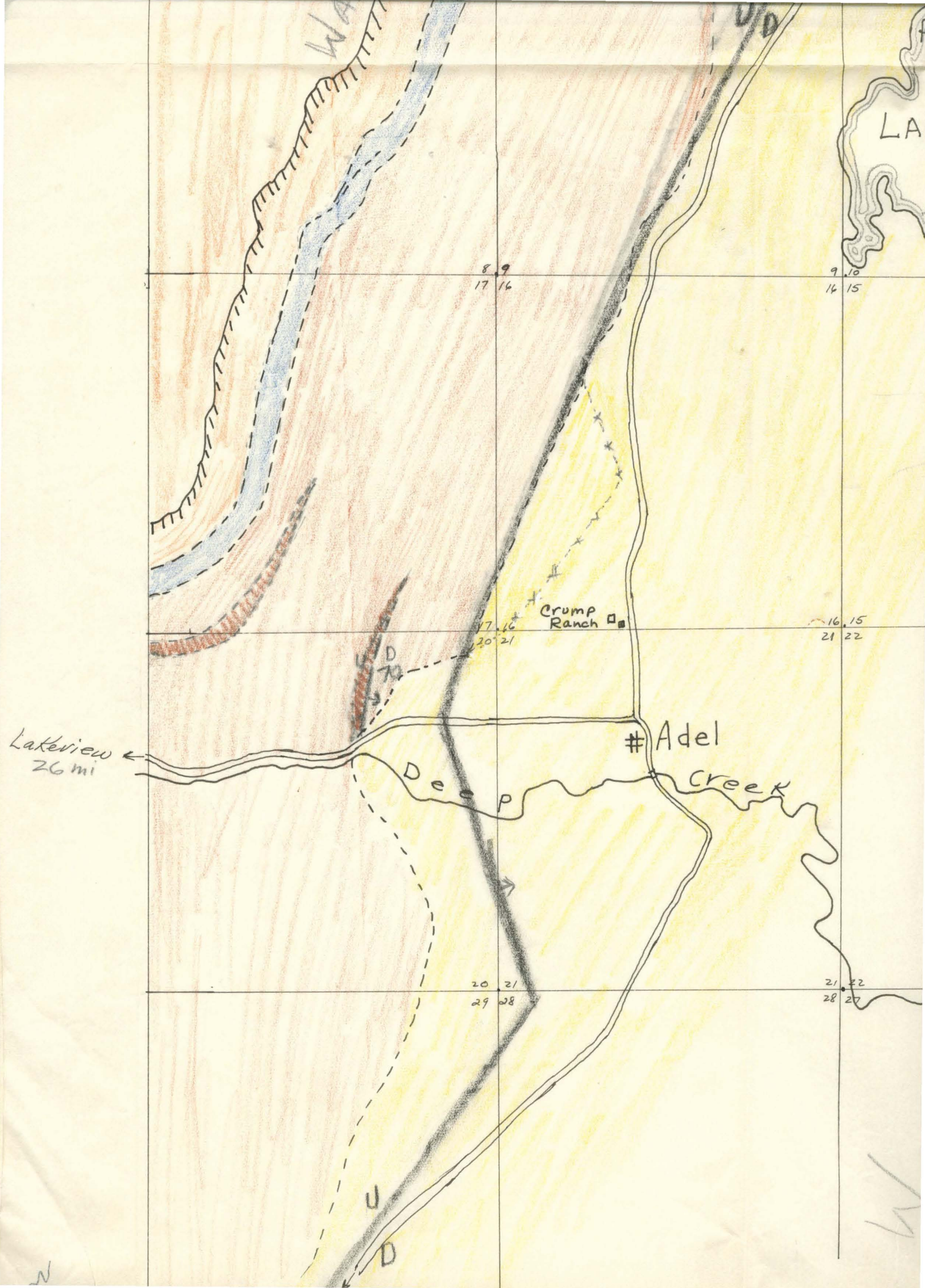
A

W











Qal

Quaternary

- 1 Recent Alluvium
- 2 Pleistocene Lake Sands
- 3 Calcareous + Siliceous Tufa

Tcb

} Pliocene (?)

Capping Basalt  
Massive alkaly taxitic basalt

Tmt

Tuffs

Welded tuff, pumice lapilli tuff, tuff breccia

Miocene

2 E E T

Tmob

Miocene

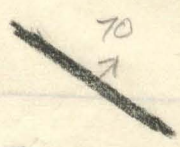
Older Basalt  
Thin to thick flows  
Thin flows vesicular, forations  
Thick flows black, diabasic texture. Some interbedded tuff and tuff breccia



Grump Continuous Geyser



Warm Springs + wells



Approximate location of Major fault

15 STRIKE and Dip

Warner Valley Escarpment  
Camp Lakes, Lake County, Oregon

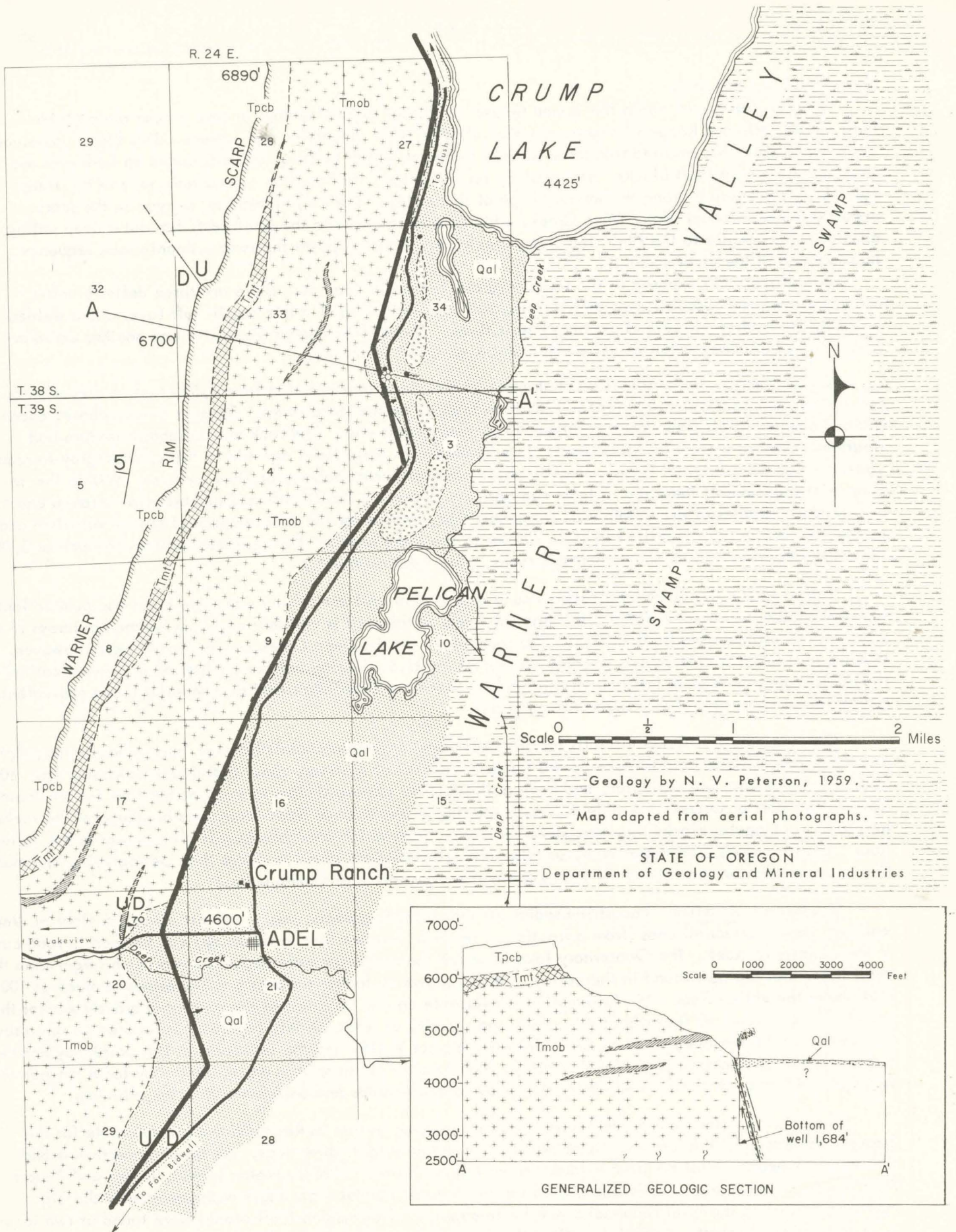
Photo's

— — — Minor fault

M. Peterson 1959

1/2





GEOLOGY OF AREA ALONG THE WARNER VALLEY ESCARPMENT  
NEAR PELICAN AND CRUMP LAKES, LAKE COUNTY, OREGON