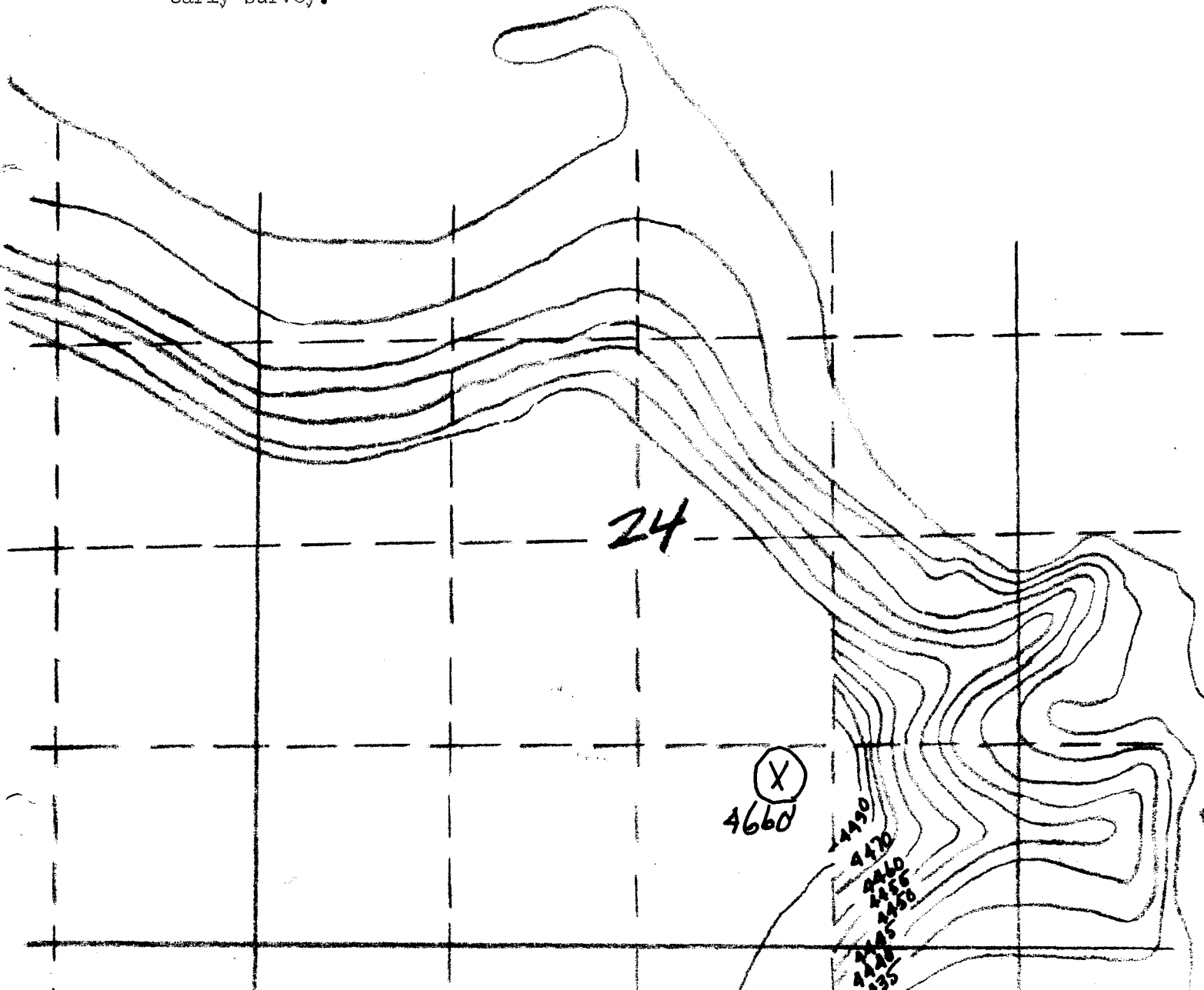


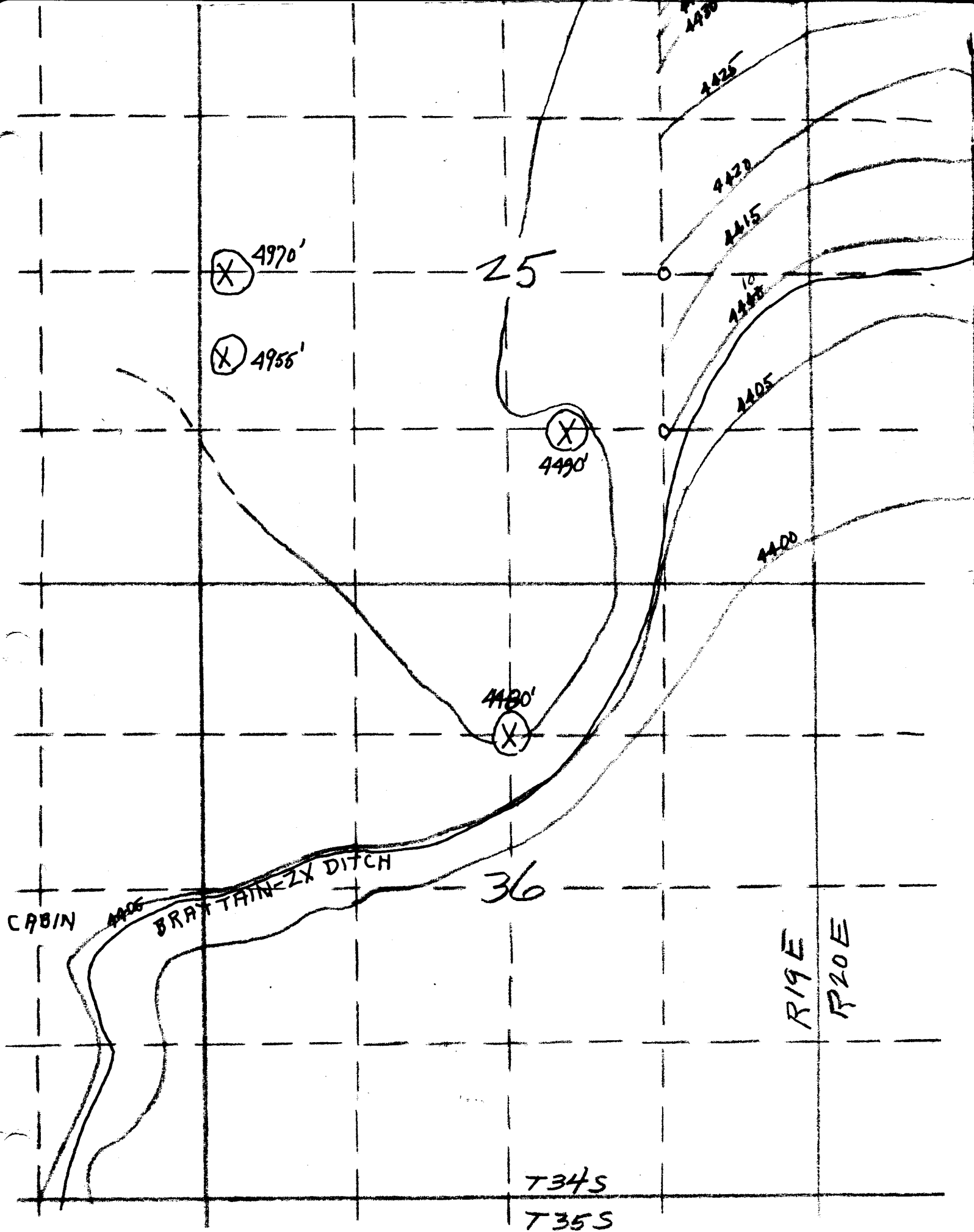
T 34 S; R 19 E; Sections 24, 25 and 36. Lake County, Oregon.

Traced by N. S. Wagner, July 28, 1949, from a map made by a Mr. White of San Francisco in connection with a Bureau of Reclamation project made during the early part of this century --- this according to Mr. Vaughn, of the ZX Ranch, owners of the print from which this was traced. The White map covers a large area both to the north and to the south of the area shown here.

The ditch serves to delimit the Tucker hills on their east and southern bounds in that beginning at about the center of the SE $\frac{1}{4}$ of section 25 and continuing to where the ditch crosses the north-south center line of section 36, the ditch is situated at the very foot of the cliffs.

Pencil contour is of sketch accuracy and represents the approximate trend of the rim of the hills. The location of aneroid elevations on the hill is likewise approximate only. All elevations corrected to the 4410 contour. Although it seems to conform, the possibility exists that the present ditch may not conform in all details to ditch as plotted by this early survey.

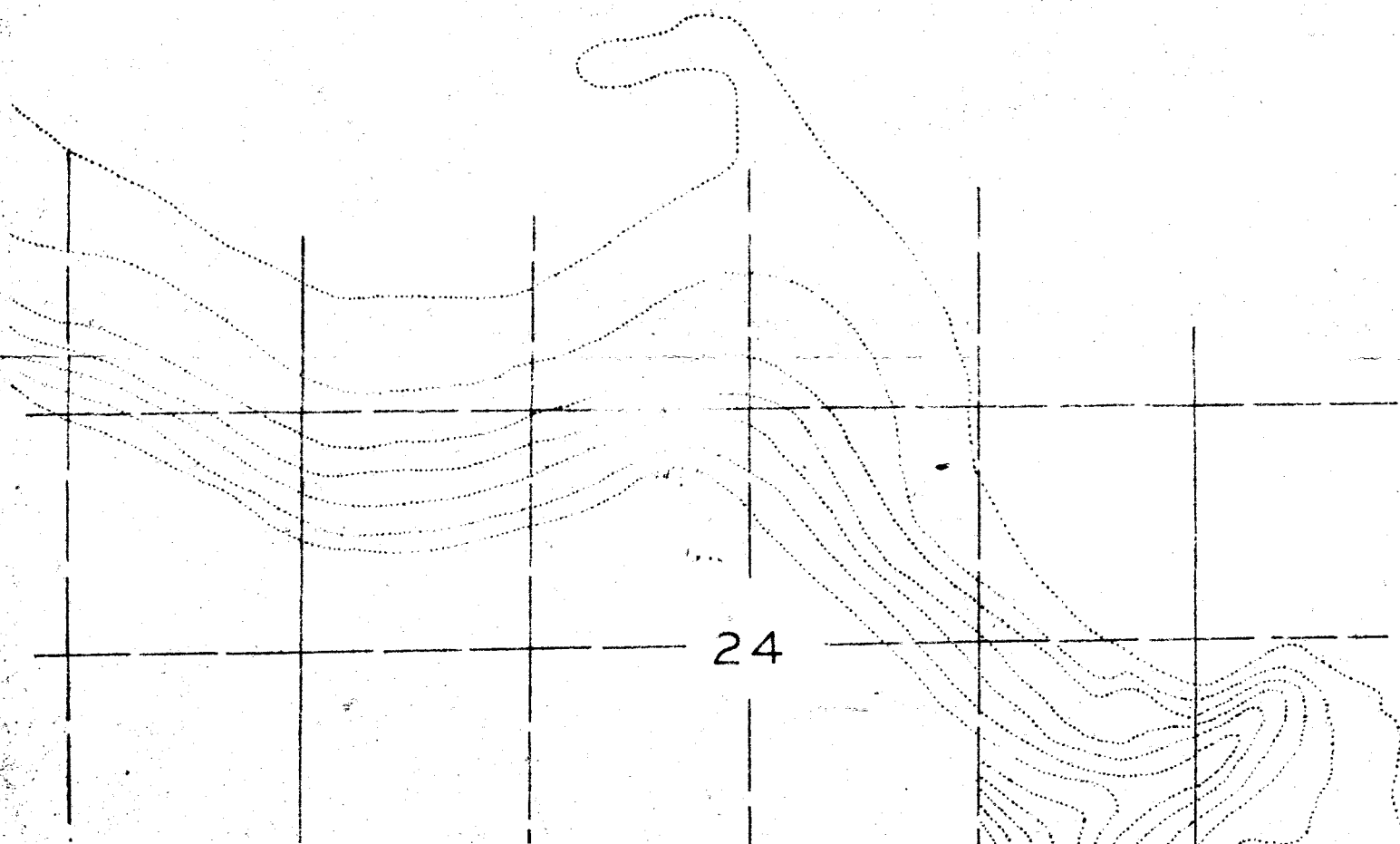




TUCKER HILL, T. 34 S., R. 19 E., LAKE CO., ORE.

BASE TAKEN FROM A MAP IN THE Z X RANGE OFFICE.
THE ORIGINAL MAP WAS MADE IN CONNECTION WITH AN
EARLY RECLAMATION PROJECT.

ONLY ADDITIONS TO THIS BASE ARE THE DASHED LINE
AND THE VERTICAL NUMBERS THEREON. THE DASHED
LINE IS OF SKETCH ACCURACY AND REPRESENTS THE
APPROXIMATE TREND OF THE RIM OF THE HILL IN
THE OTHERWISE UNMAPPED AREA. THE VERTICAL NUM-
BERS ARE ANEROID ELEVATIONS. TRACING AND ENTRIES
BY N.S. WAGNER, JULY, 1949



4660

4470
4460
4450
4440
4435
4430

4425

4420

4415

4410

4405

4400

25

4595

4490

4480

36

BRATTAIN-ZX DITCH

NSW

