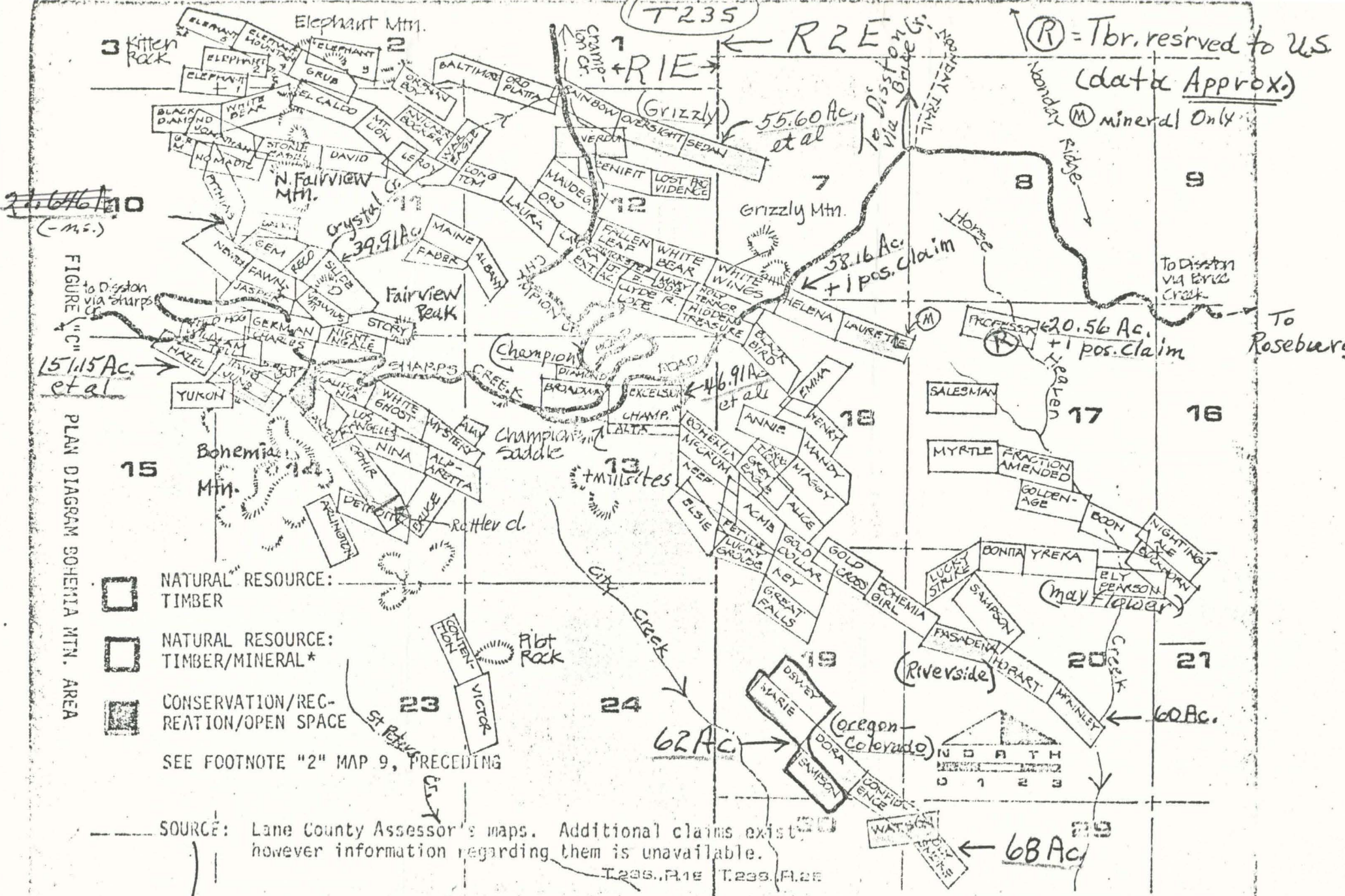


MAP OF THE BOHEMIA MINING DISTRICT
Cartography by Kath Eisele



27.646/10
(-ms.)

FIGURE "C"
to Diston via Sharps Cr.

15.115 Ac. et al

PLAN DIAGRAM BOHEMIA MTN. AREA

- NATURAL RESOURCE: TIMBER
- NATURAL RESOURCE: TIMBER/MINERAL*
- CONSERVATION/REC-REATION/OPEN SPACE

SEE FOOTNOTE "2" MAP 9, PRECEDING

SOURCE: Lane County Assessor's maps. Additional claims exist, however information regarding them is unavailable.
T235, R1E T235, R2E

Plan Report - Area 7 - Lane County 12/15
6/22/16 - AH3