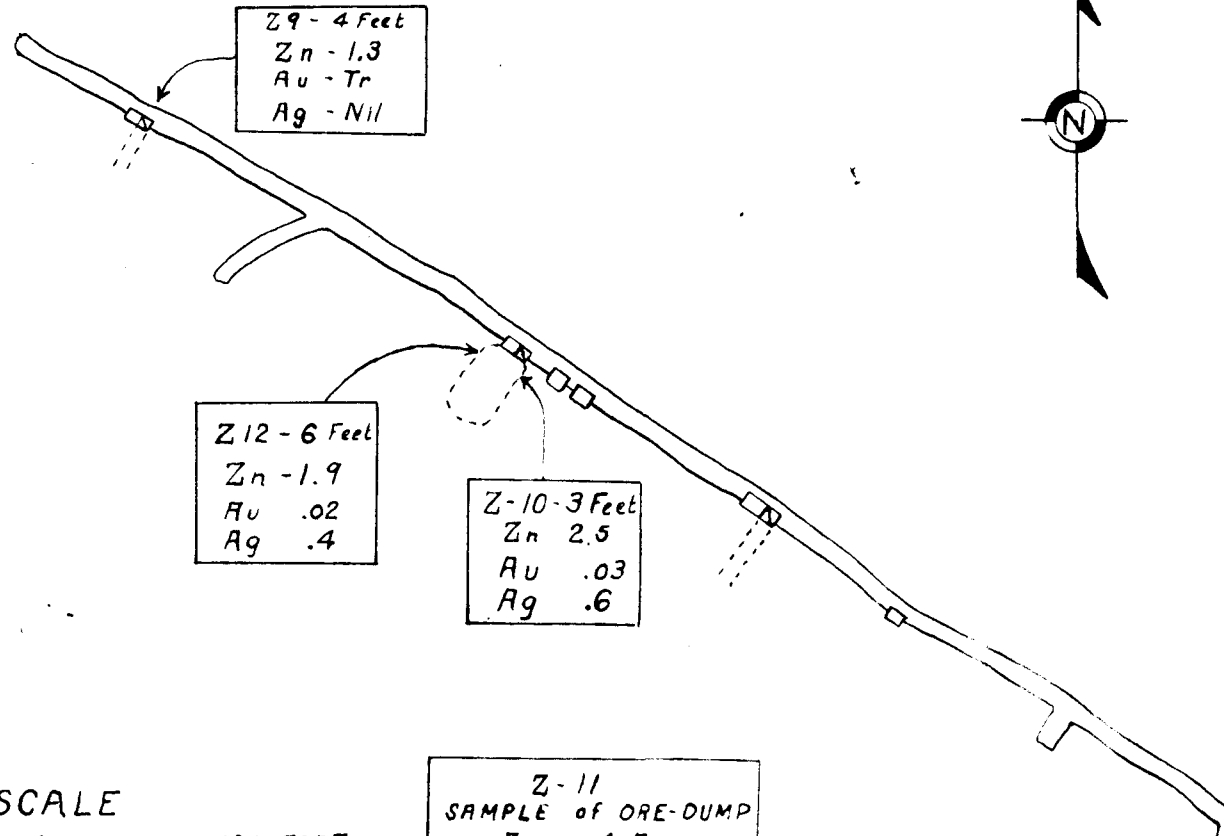


HELENA MINE - MAIN DRIFT



Z 9 - 4 Feet
Zn - 1.3
Au - Tr
Ag - Nil

Z 12 - 6 Feet
Zn - 1.9
Au .02
Ag .4

Z-10 - 3 Feet
Zn 2.5
Au .03
Ag .6

Z-11
SAMPLE of ORE-DUMP
Zn - 4.7
Au - 2.58
Ag - 5.5
Cu - .2

SCALE
100 0 100 FEET

HELENA MINE - MAIN DRIFT



#ZV - 6 Feet
Zn - 1.3
Pb - .75
Ag - Nil

ZIX - 6 Feet
Zn - 1.7
Pb - .02
Ag - .4

Z-10 - 3 Feet
Zn - 2.8
Pb - .03
Ag - .6

Z-11
SAMPLE OF ONE-DUMP
Zn - 6.7
Pb - 2.65
Ag - 2.5
Cu - .2



JEA '91

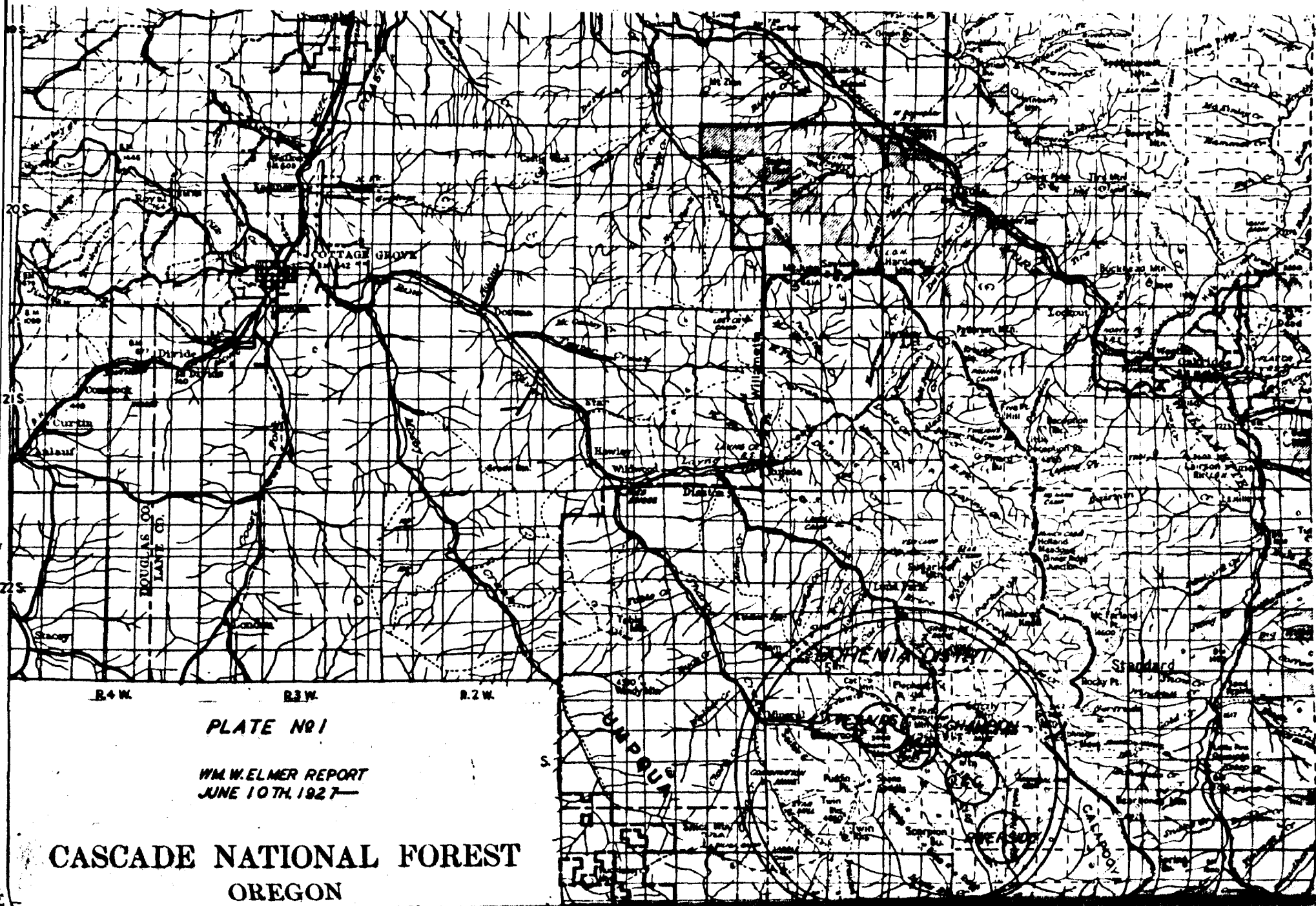


PLATE NO 1

WM. W. ELMER REPORT
JUNE 10TH, 1927

CASCADE NATIONAL FOREST
OREGON

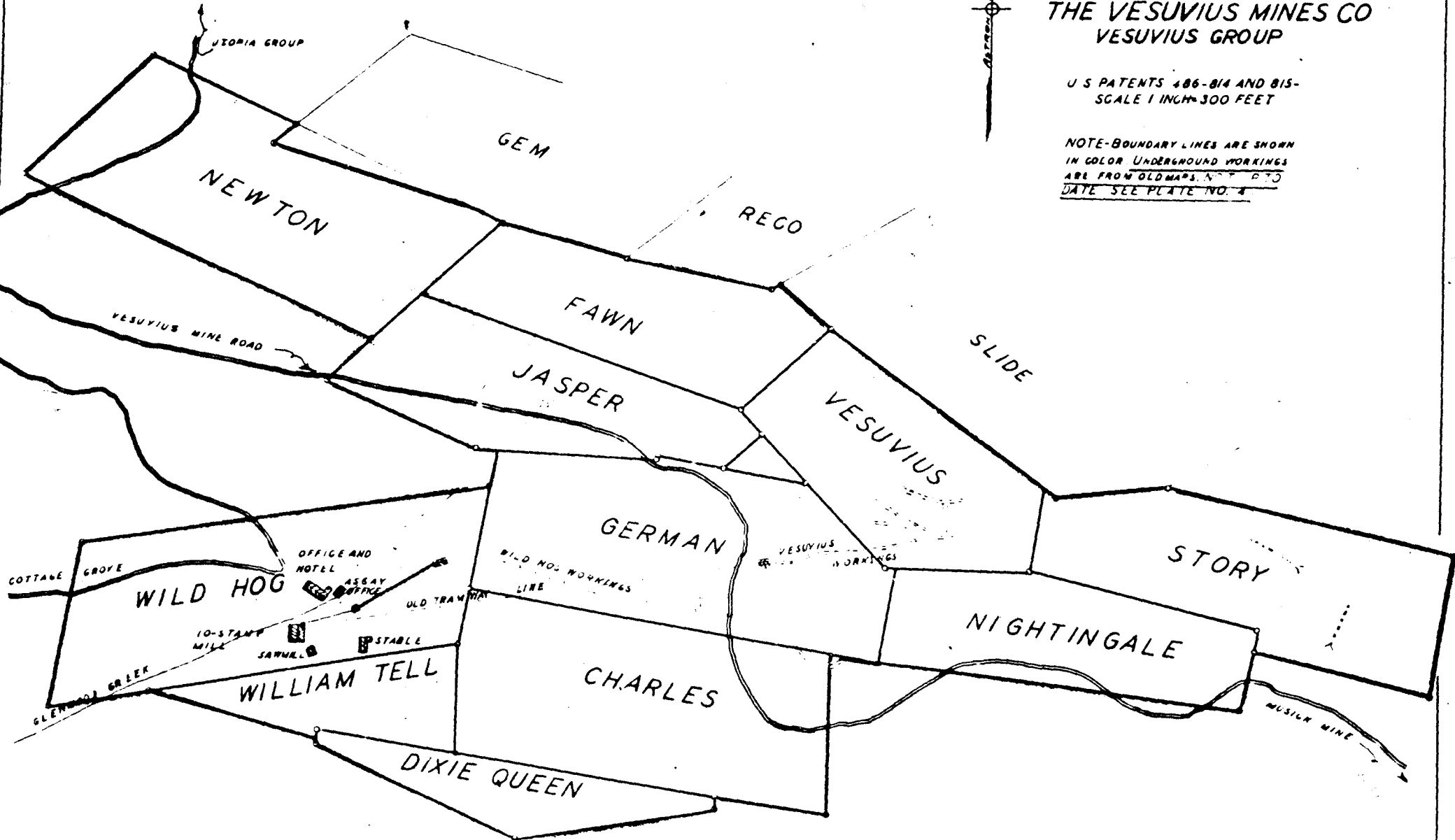
PLATE NO 2
W M W ELMER REPORT
AUGUST 20 TH, 1927

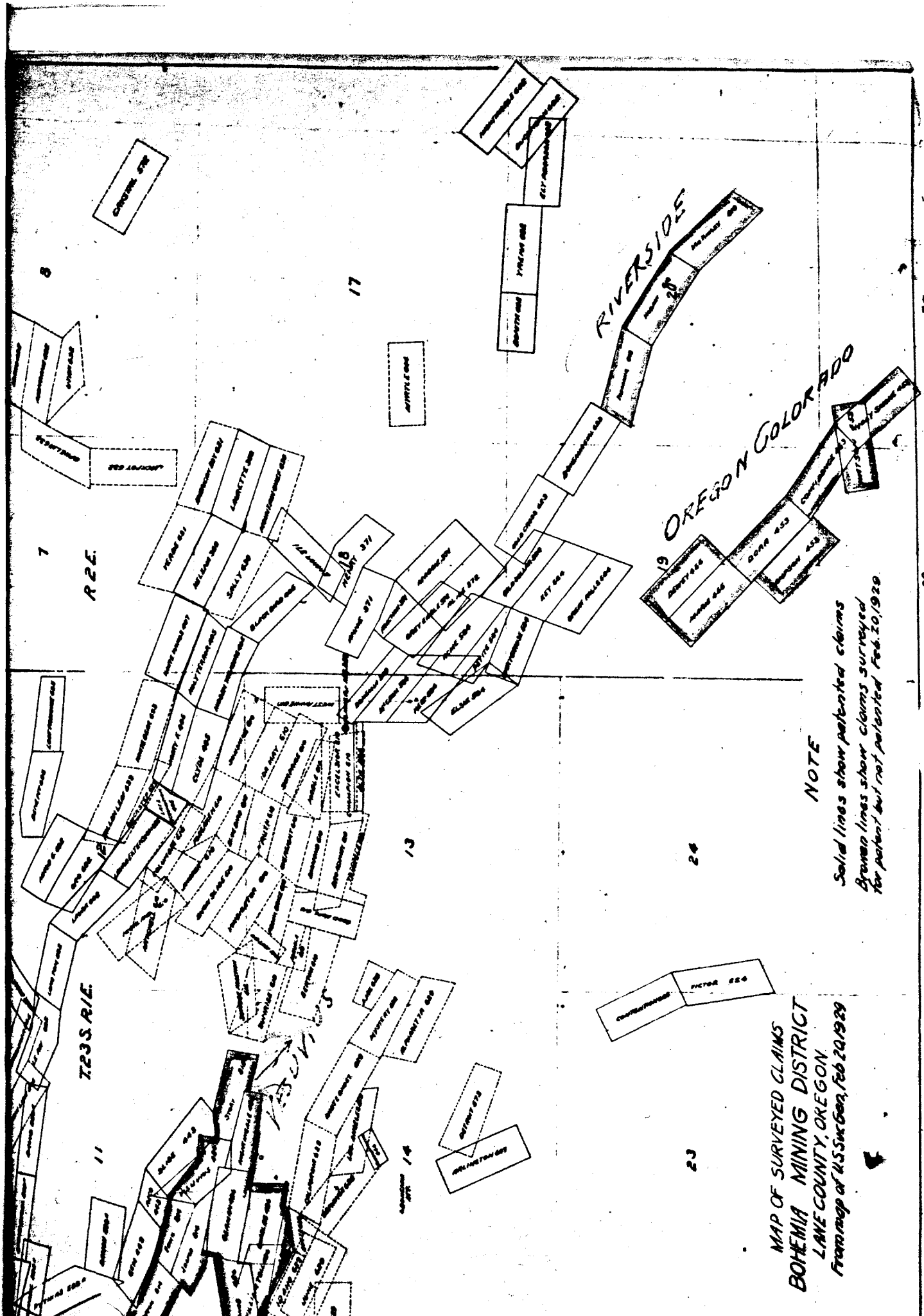
T. 23 S. R. 1 E. W. M.

PROPERTY MAP OF
THE VESUVIUS MINES CO
VESUVIUS GROUP

U S PATENTS 486-814 AND 815-
SCALE 1 INCH = 300 FEET

NOTE-BOUNDARY LINES ARE SHOWN
IN COLOR UNDERGROUND WORKINGS
ARE FROM OLD MAPS. N.P.T.O
DATE SEE PLATE NO. 4





MAP OF SURVEYED CLAIMS
 BOHEMIA MINING DISTRICT
 LANE COUNTY, OREGON
 From map of U.S. Geol. Surv., Feb. 20, 1929

NOTE

Solid lines show patented claims
 Brown lines show claims surveyed
 for patent but not patented Feb. 20, 1929

MODERN MAP
VESUVIUS GROUP OF MINES
LANE COUNTY OREGON

SCALE: 1" = 100 FT.

BOUNDARY LINES ARE FROM PATENT SURVEY MAPS
 SURVEY OF VESUVIUS MAIN ADIT AND WILD HOG
 WAS MADE AUGUST 8-10, 1927 OTHER DATA AND CON-
 DITIONS FROM OLD MINE MAPS

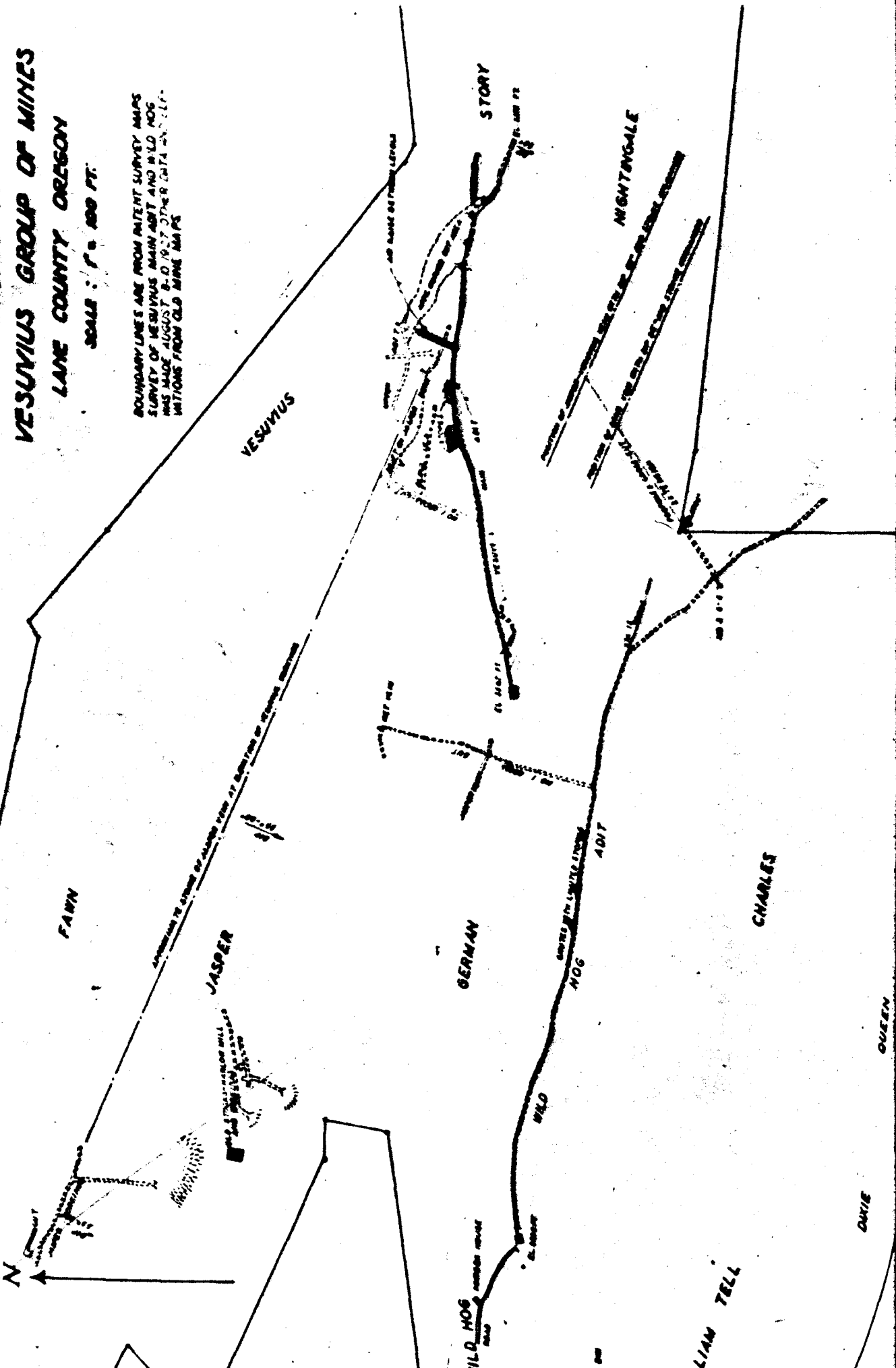


PLATE NO 4
 NEW CLINES SPRING
 AUGUST 28 TH 1927

QUEEN

DATE

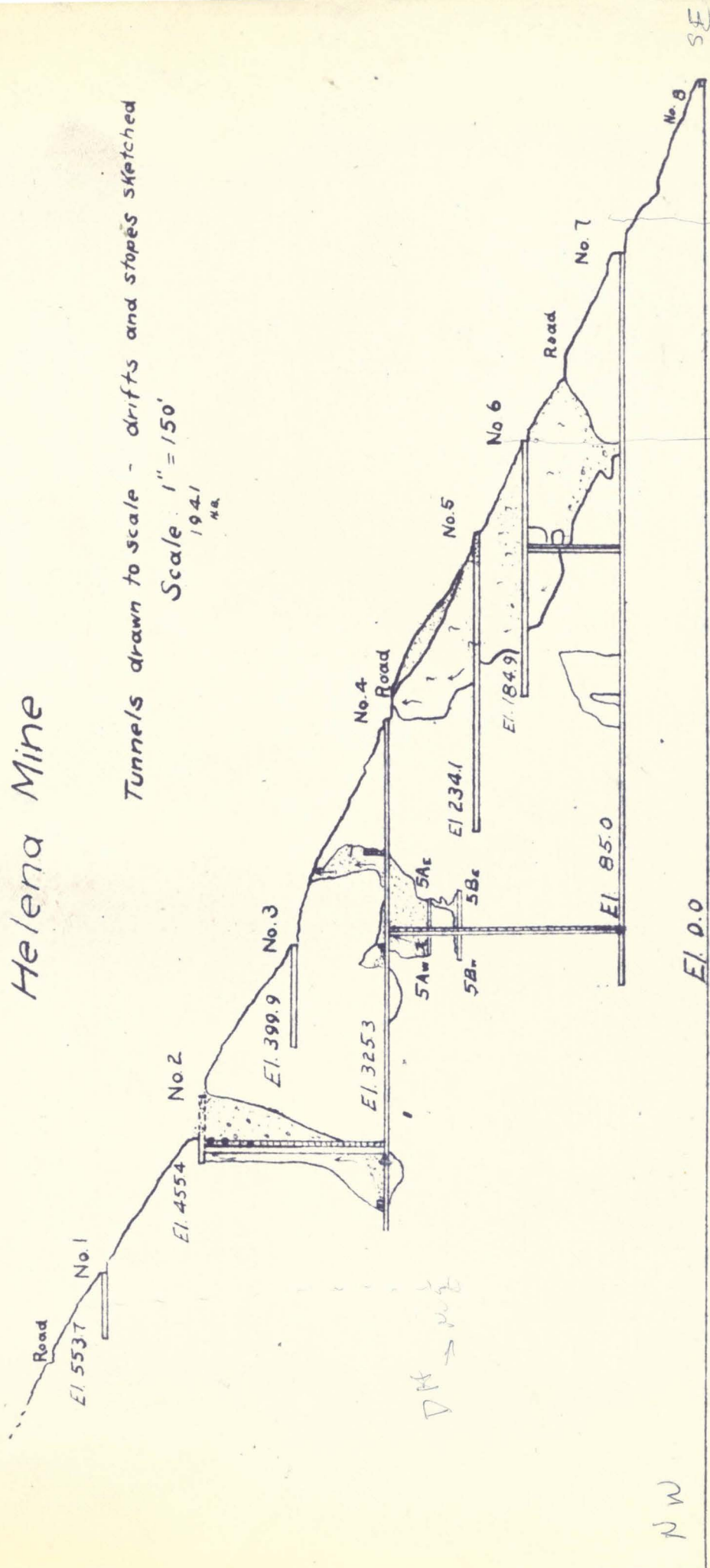
~~11-26-64~~

Nov. 1964 Drilling
Completed in Winter 64
For Federal Resources Corp
Leased from Lane Minerals Inc.

Helena Mine

Tunnels drawn to scale - drifts and stopes sketched

Scale 1" = 150'
1941
N.A.



DH → #4

about 400
DH #4

25' S
down

NW

El. 0.0

No. 8

No. 7

Road

No. 6

No. 5

No. 4
Road

No. 3

No. 2

No. 1

Road

SE