

Figure 57. Index map of the Quartzville district.

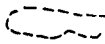
WESTERN CASCADES



Mining Districts



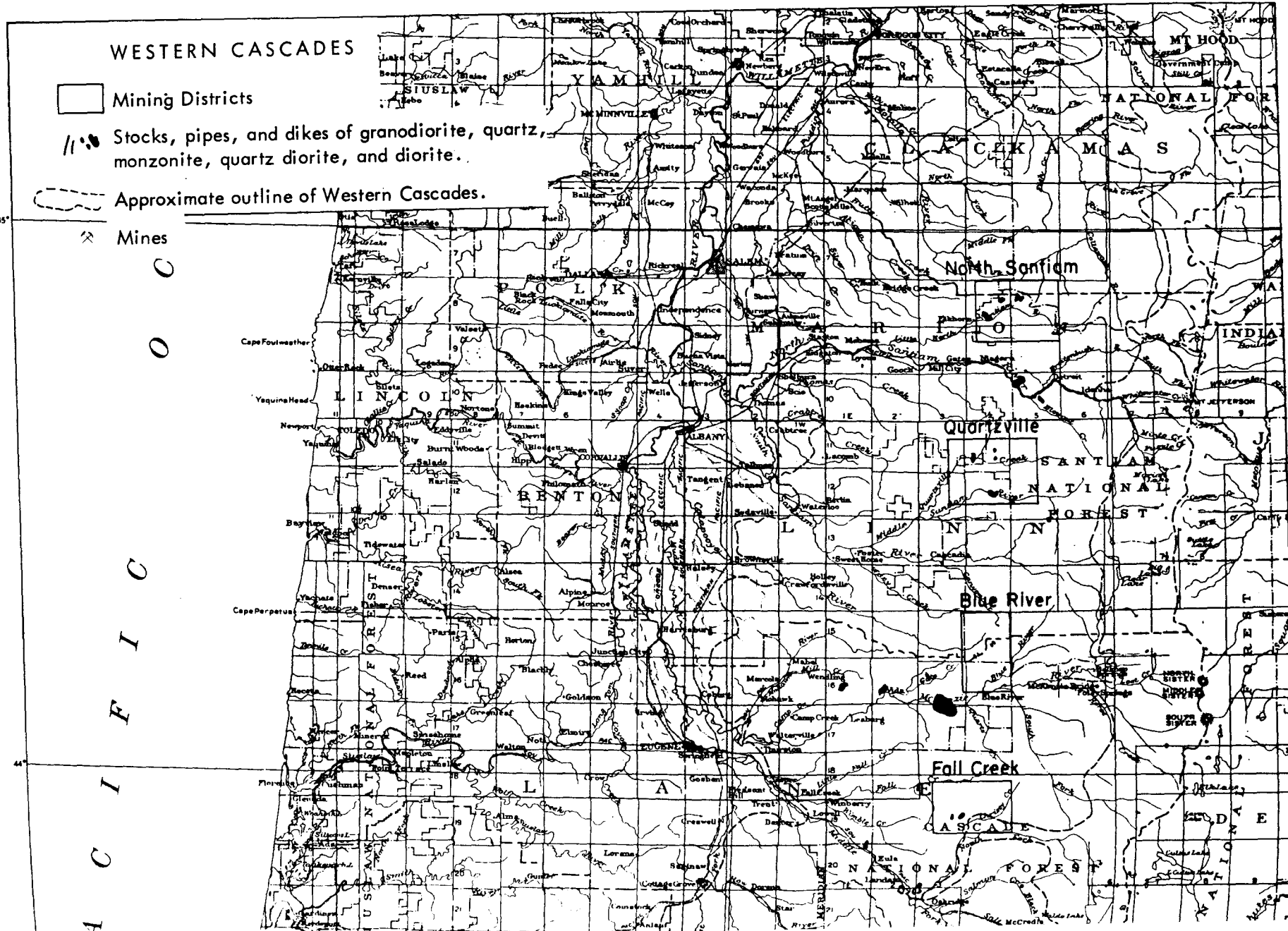
Stocks, pipes, and dikes of granodiorite, quartz monzonite, quartz diorite, and diorite.



Approximate outline of Western Cascades.



Mines



GOLD AND SILVER IN OREGON



- 4401
 - 4423
- ✓ Sample Location

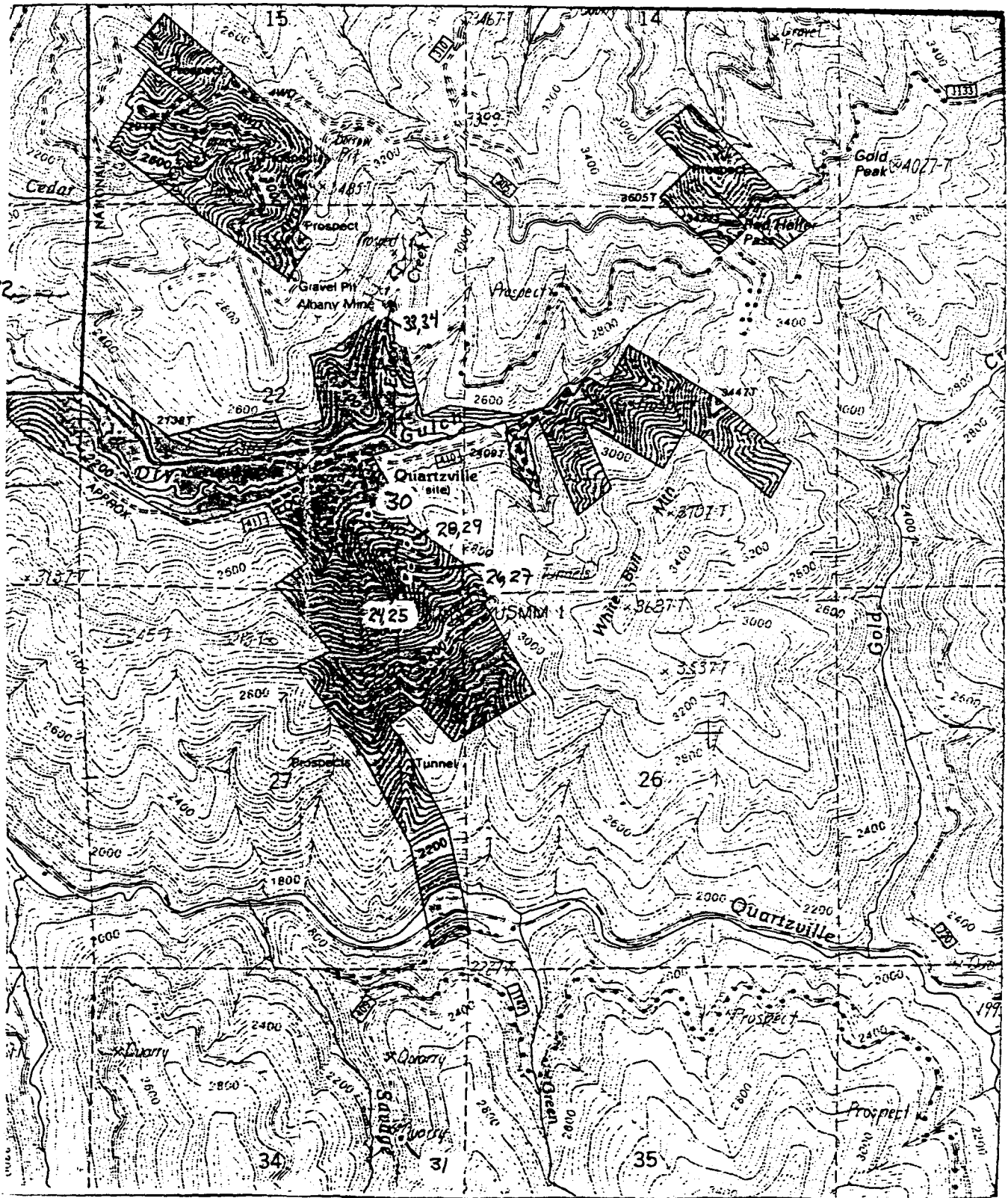


Sunshine Mining Company

Falls Creek District
Lane County, Oregon

Sample Location Map
T 18, R 3, E

1" = 2000' S R M 6-88



○ 4524
 ↓
 Sample Locations
 ○ 4534

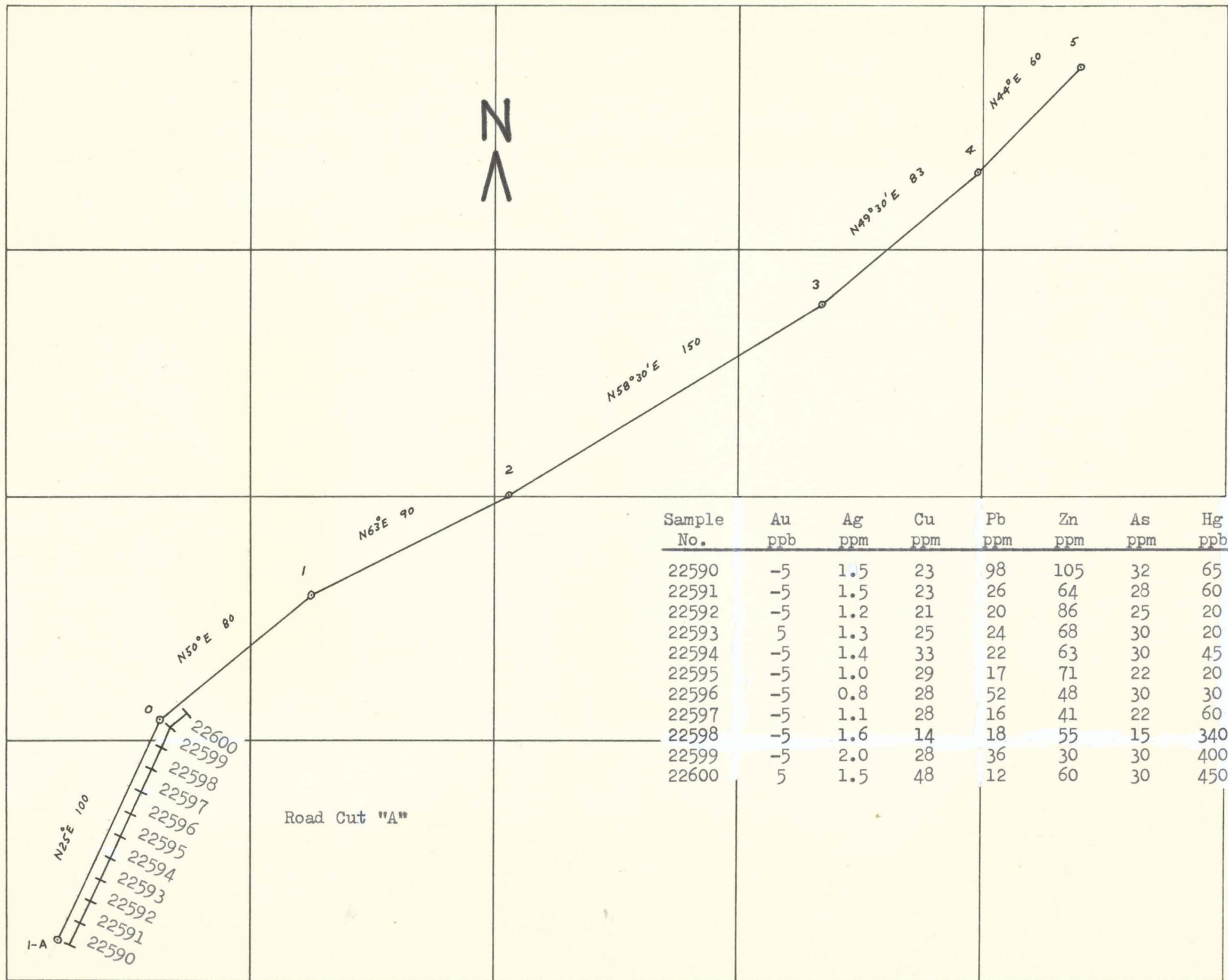
A
 N

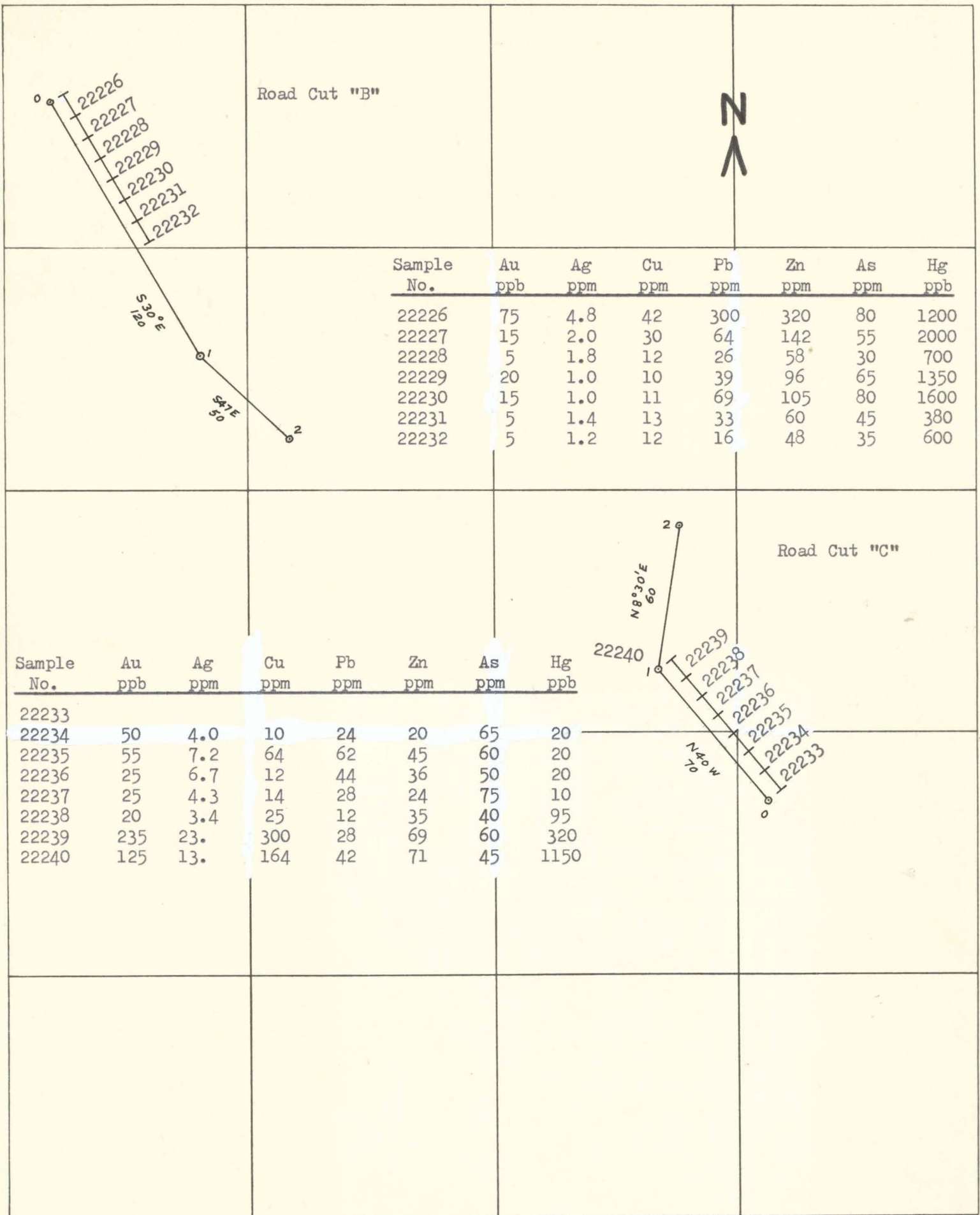
Sunshine Mining Company		
Quantzville District Linn County, Oregon		
Sample Location Map		
T11S, R4E		
1"=2000'	ERM	6-88

MINE Quartzville District
 NOTES BY _____

SCALE 1" = 50'

LEVEL Road Cut "A"
 DATE 9/6/75





Road Cut "B"



Sample No.	Au ppb	Ag ppm	Cu ppm	Pb ppm	Zn ppm	As ppm	Hg ppb
22226	75	4.8	42	300	320	80	1200
22227	15	2.0	30	64	142	55	2000
22228	5	1.8	12	26	58	30	700
22229	20	1.0	10	39	96	65	1350
22230	15	1.0	11	69	105	80	1600
22231	5	1.4	13	33	60	45	380
22232	5	1.2	12	16	48	35	600

S 30° E
120

S 71° E
50

Road Cut "C"

Sample No.	Au ppb	Ag ppm	Cu ppm	Pb ppm	Zn ppm	As ppm	Hg ppb
22233							
22234	50	4.0	10	24	20	65	20
22235	55	7.2	64	62	45	60	20
22236	25	6.7	12	44	36	50	20
22237	25	4.3	14	28	24	75	10
22238	20	3.4	25	12	35	40	95
22239	235	23.	300	28	69	60	320
22240	125	13.	164	42	71	45	1150

N 83° 30' E
60

N 40° W
70