

Figure 1.0 Location of Features on Snow Peak

Scale 1: 37,500.

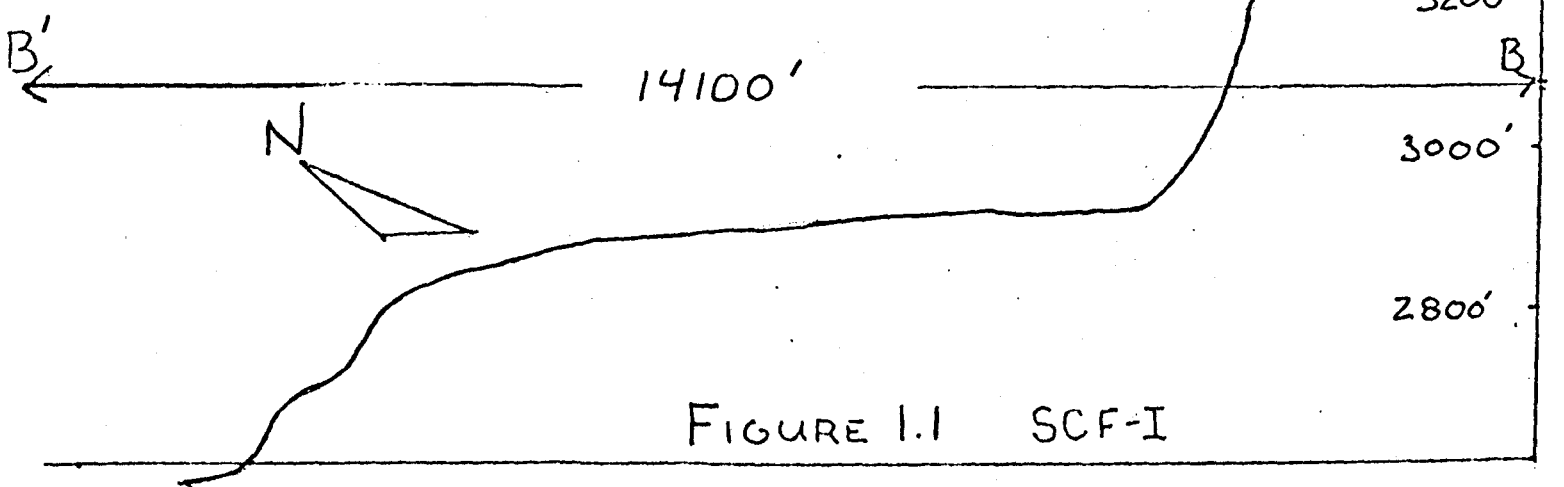
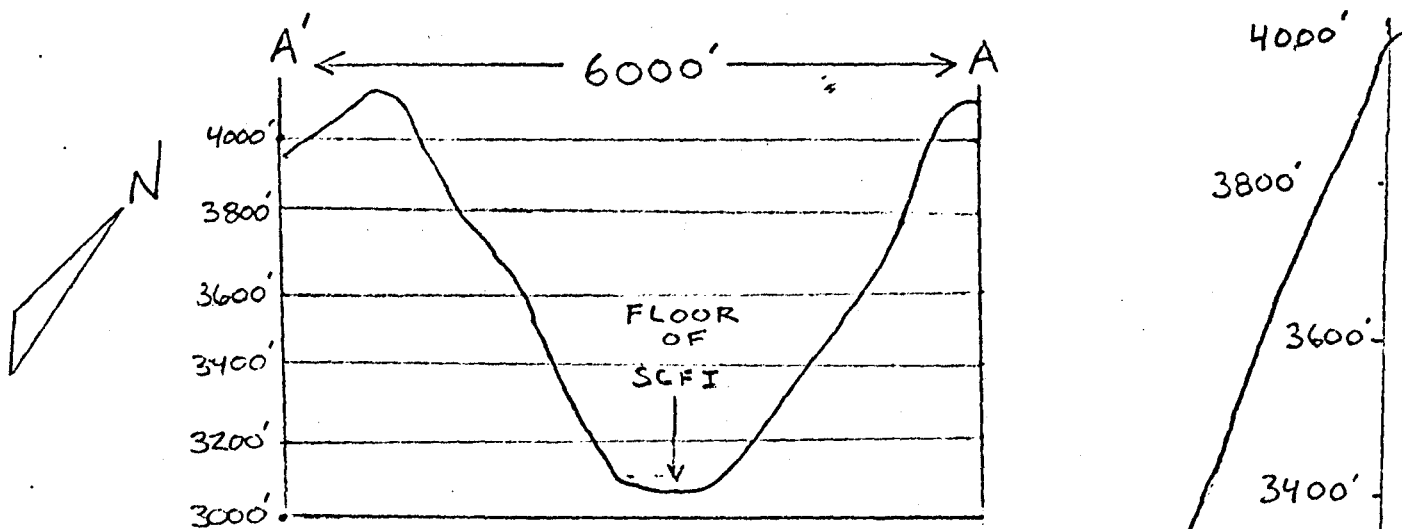
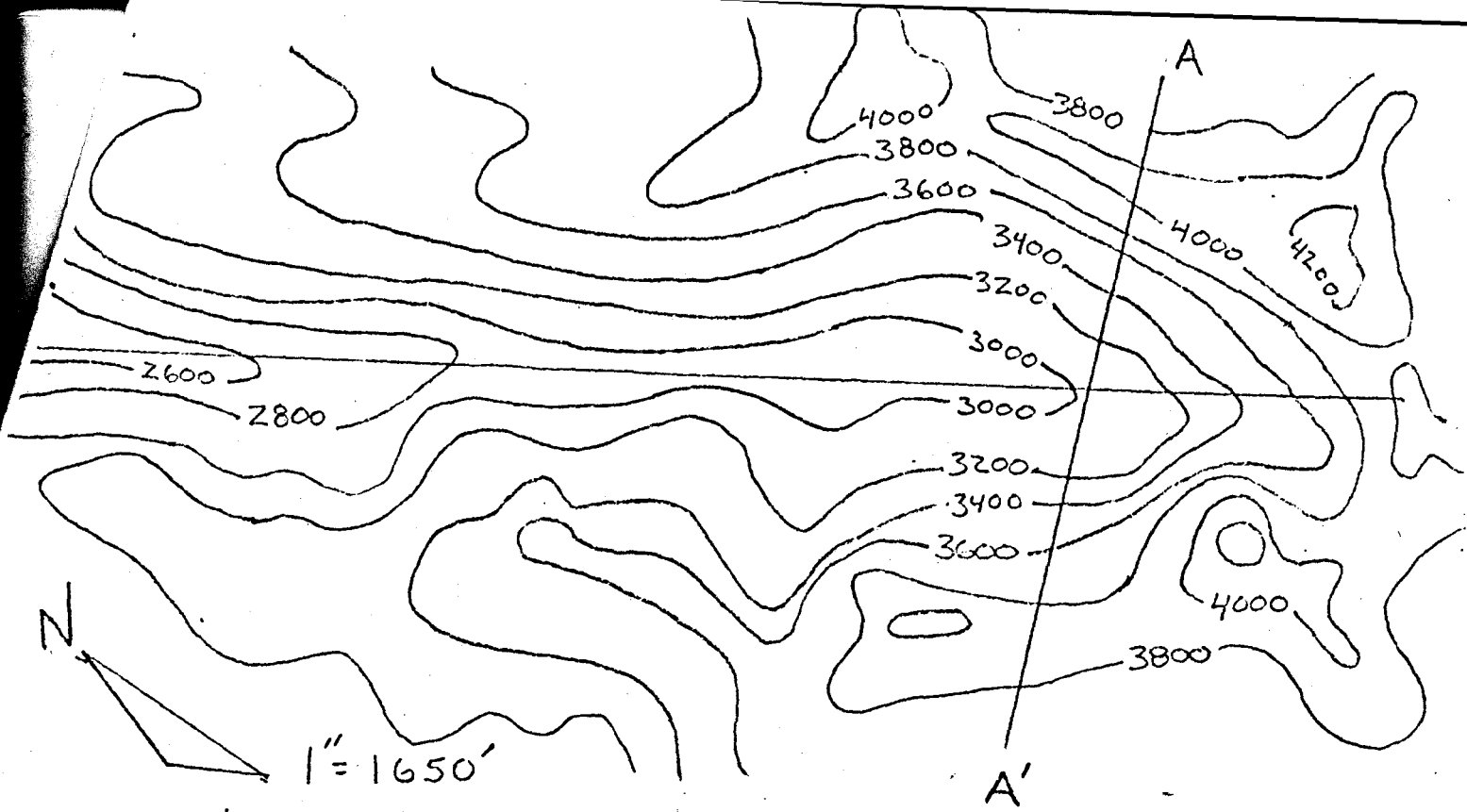


FIGURE 1.1 SCF-I

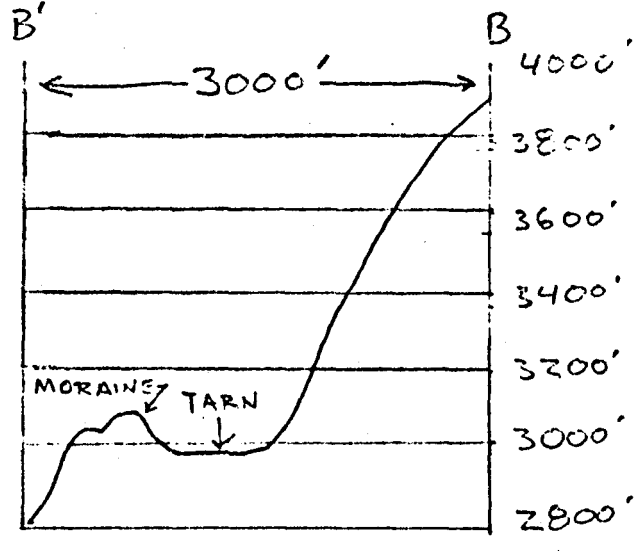
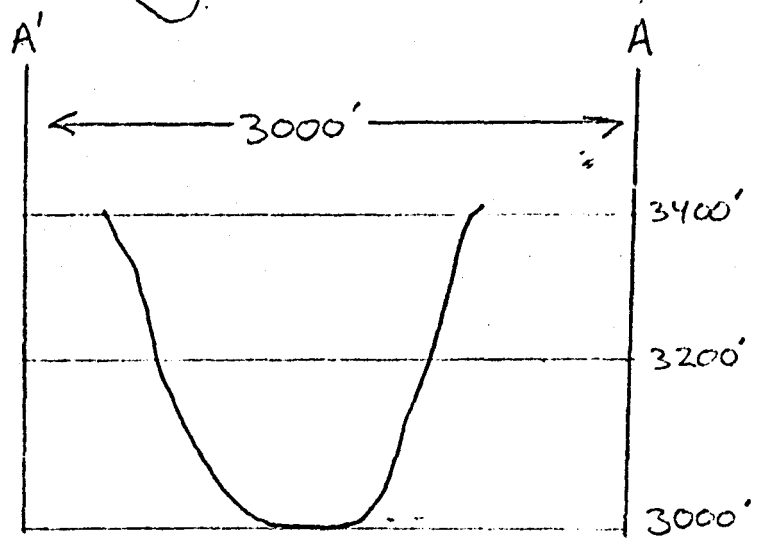
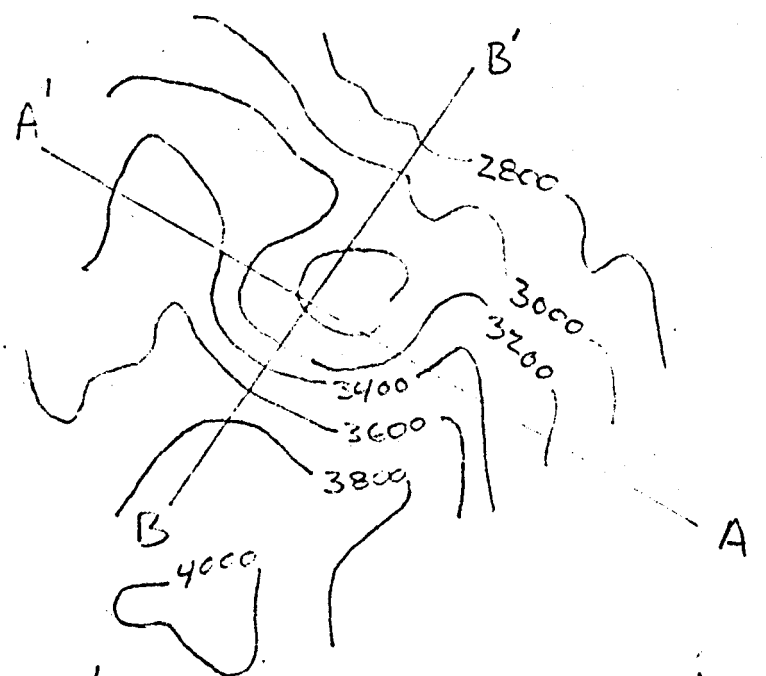


FIGURE 1.2 SCF-II

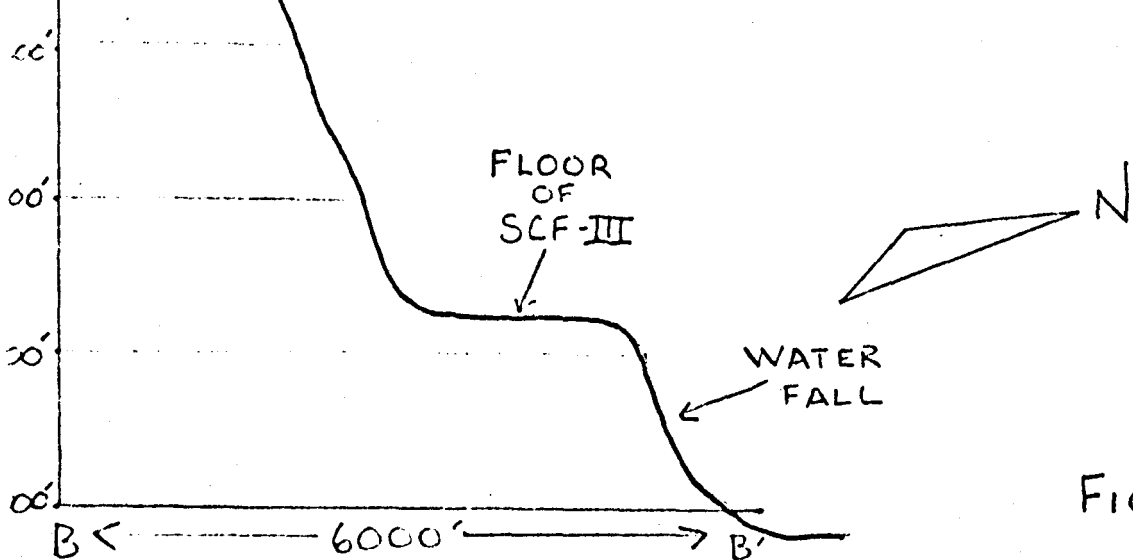
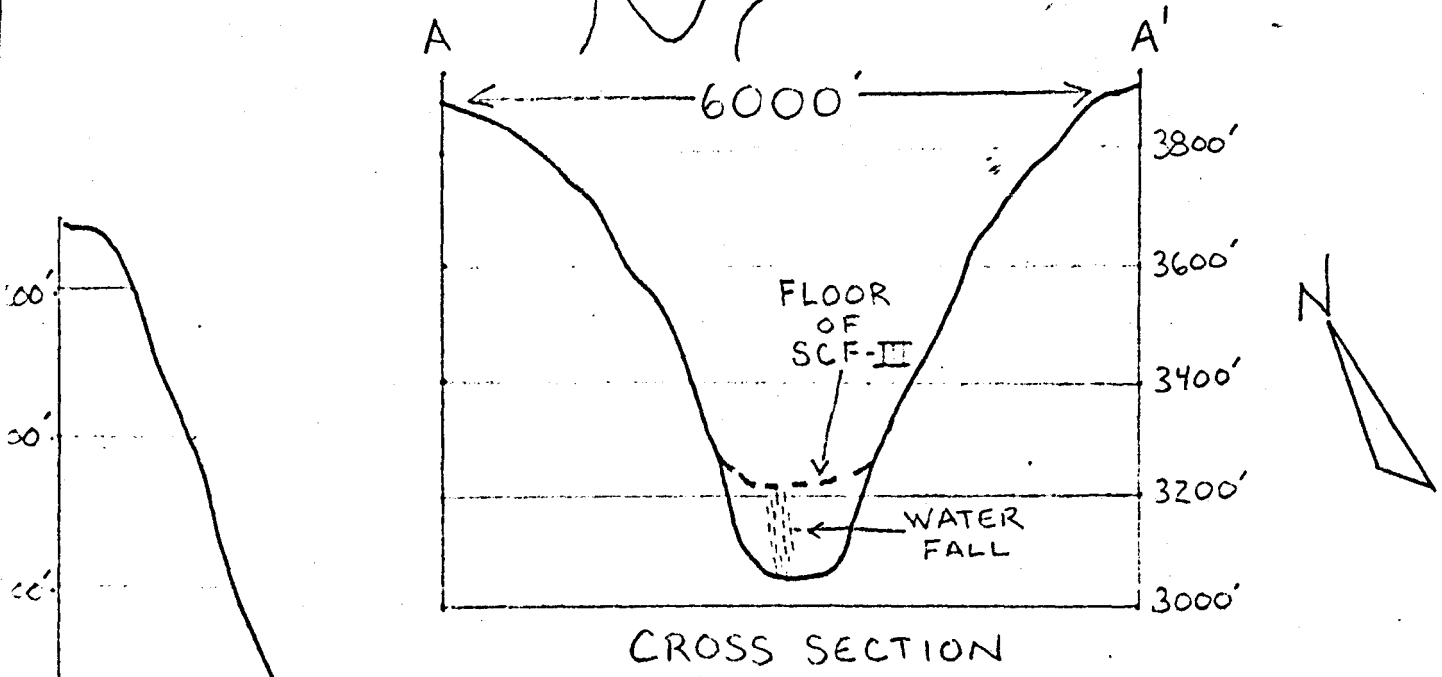
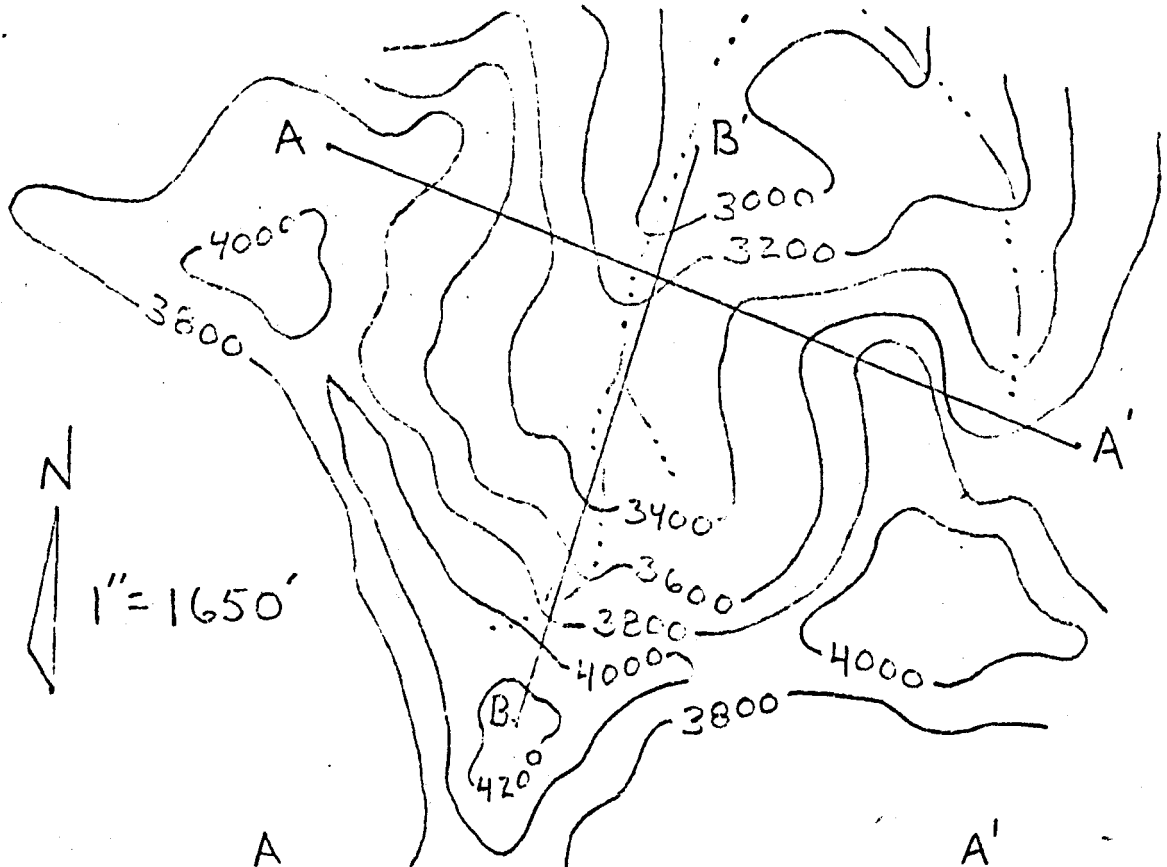


FIGURE 1.3 SCF-III



FIGURE 1.4 STRIATIONS ON THE  
FLOOR OF SCF-III (INDIAN PRAIRIE)

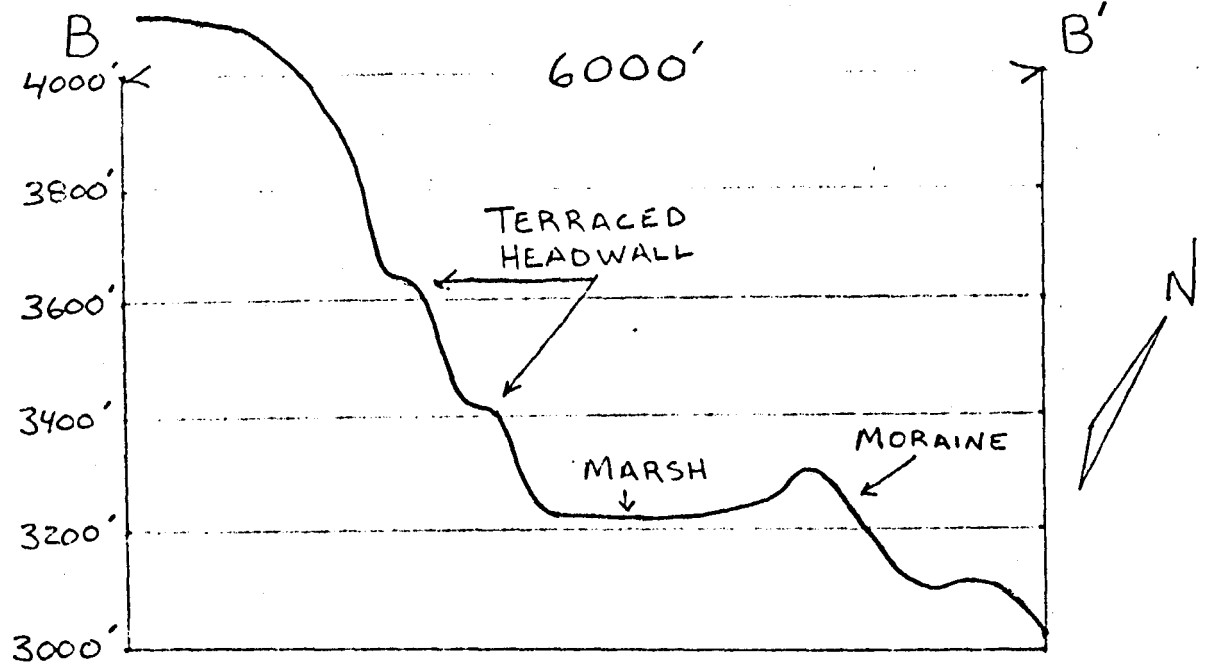
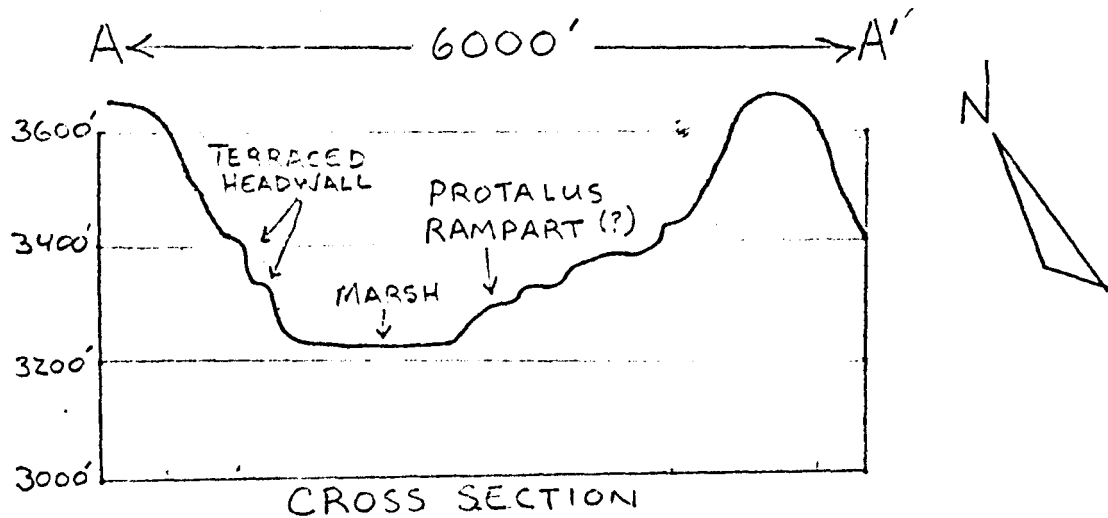
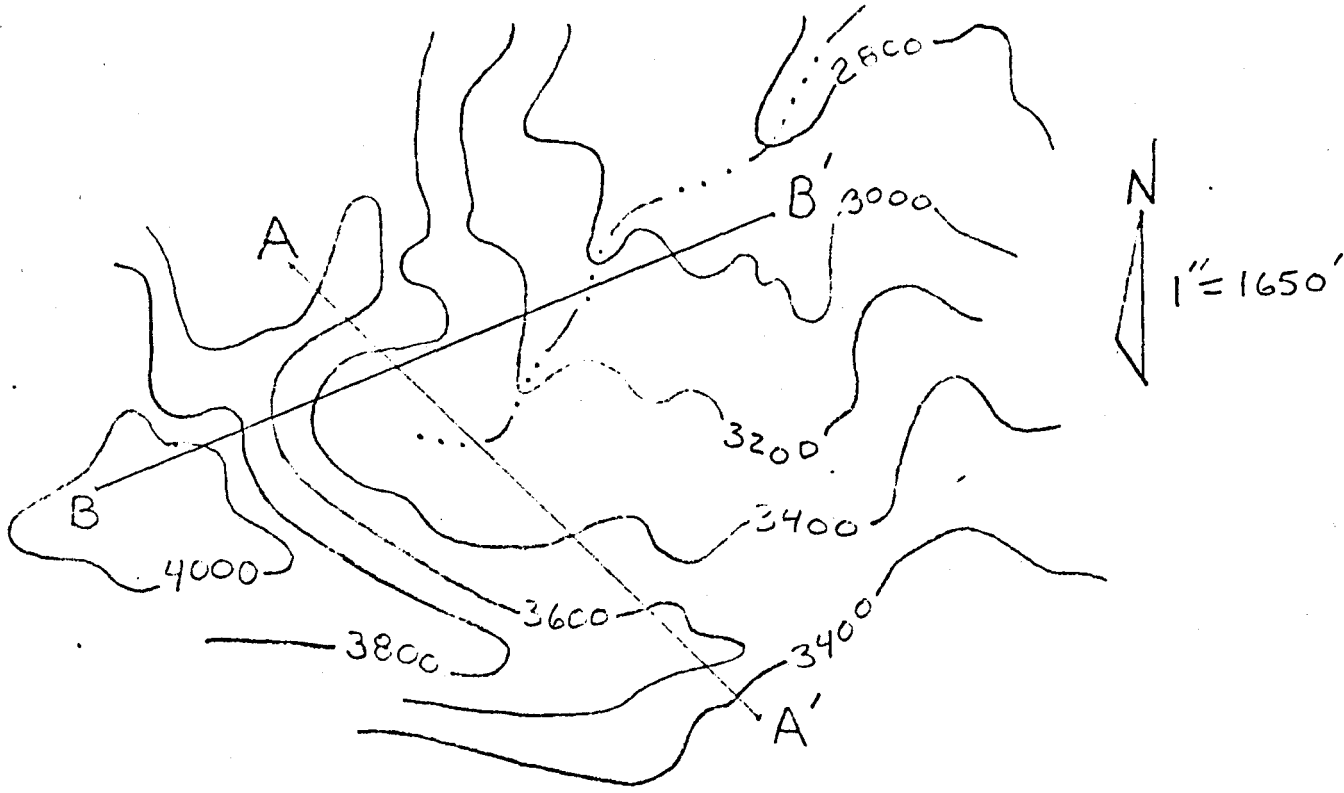


FIGURE 15 SCF-117

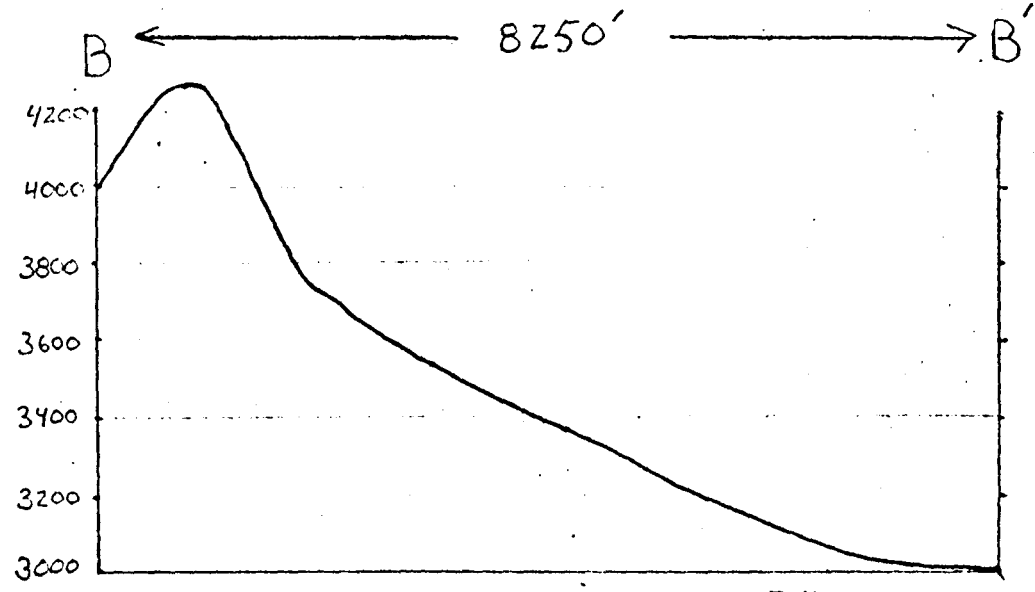
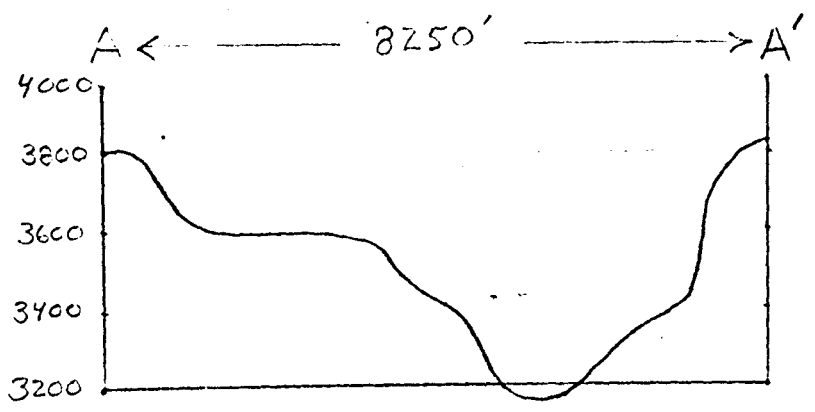
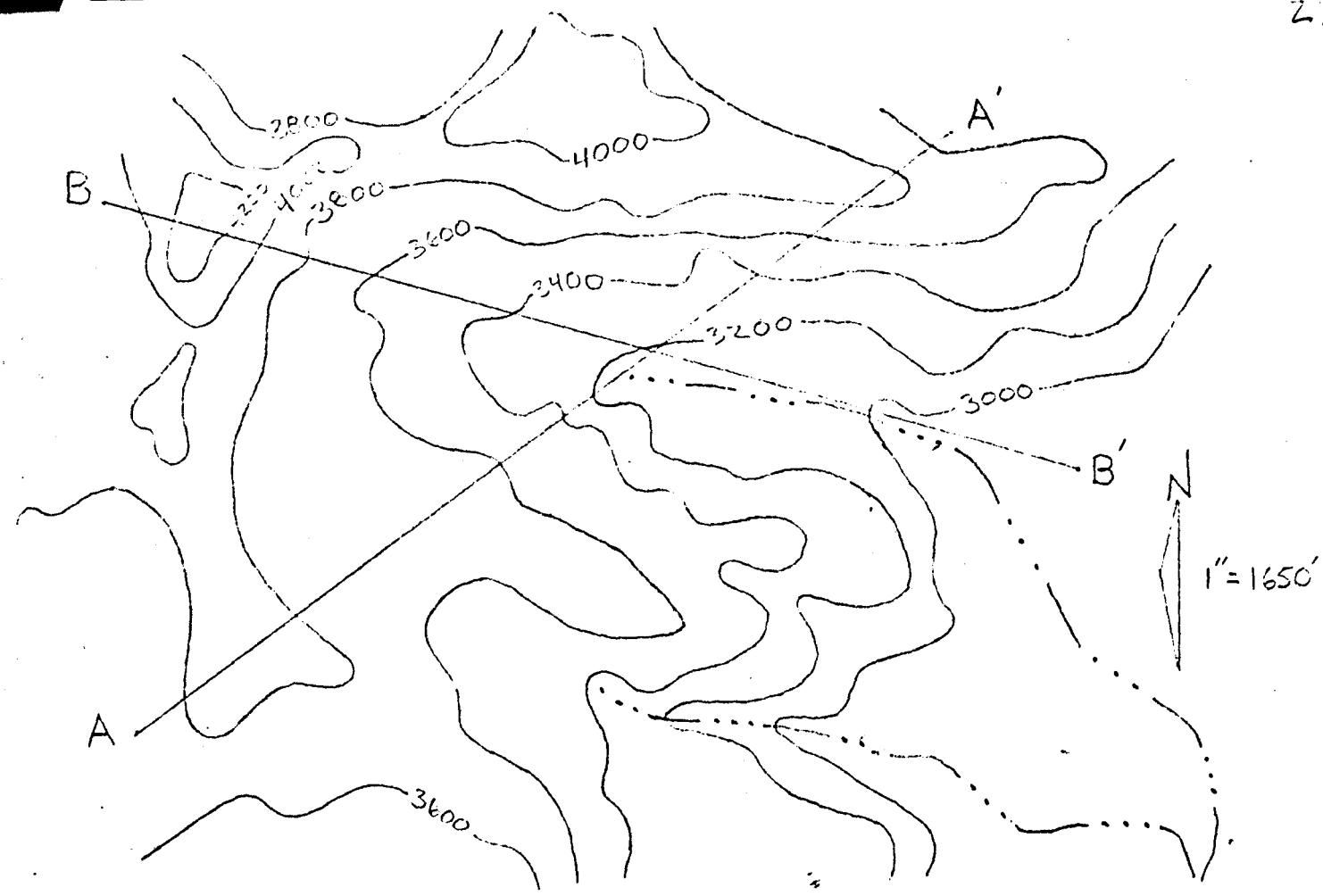


FIGURE 1.6 SCE-V

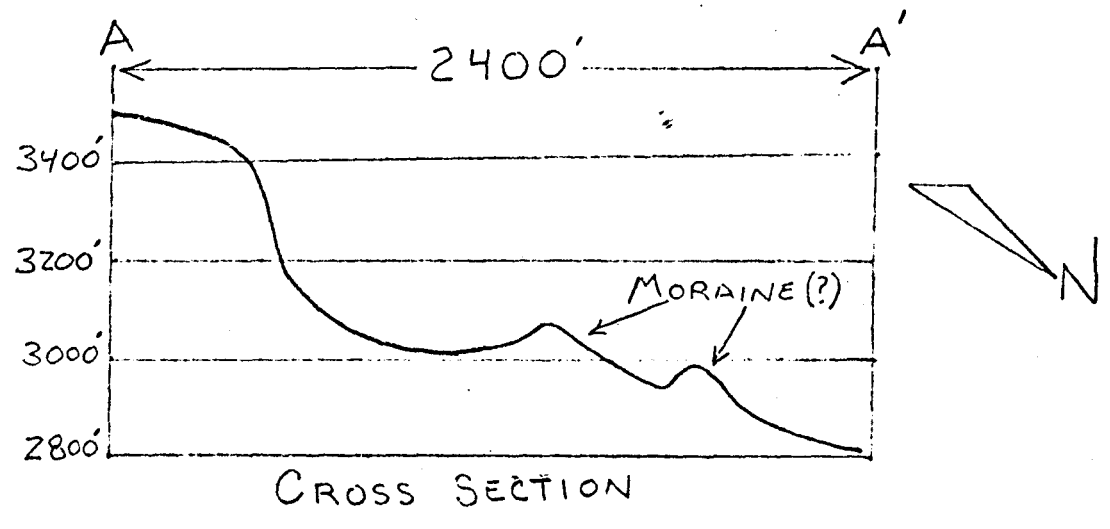
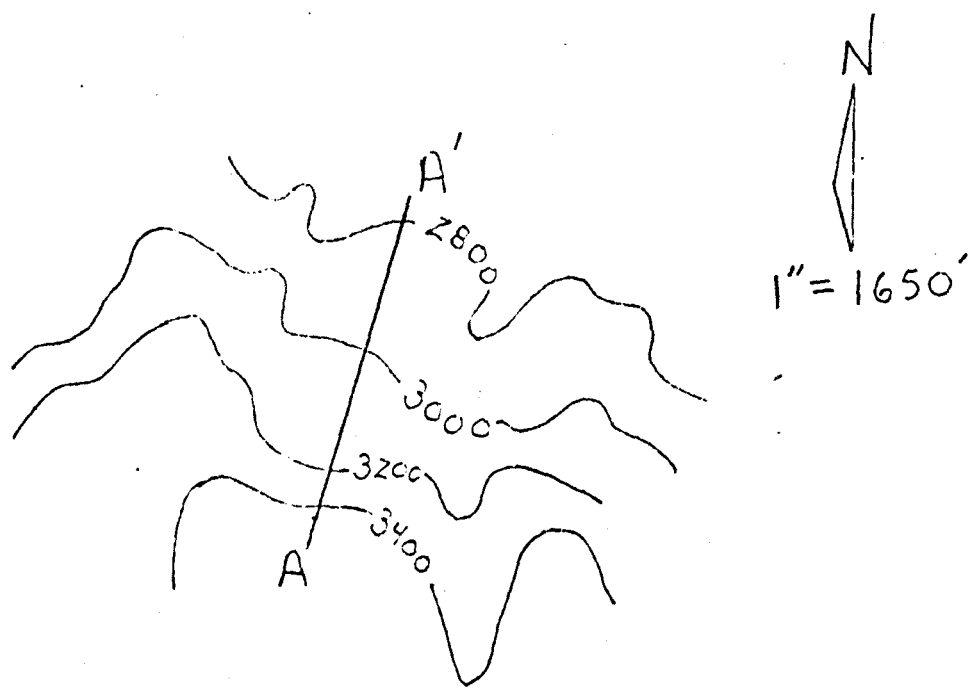


FIGURE <sup>1.7</sup>~~1.8~~ SCF-VI



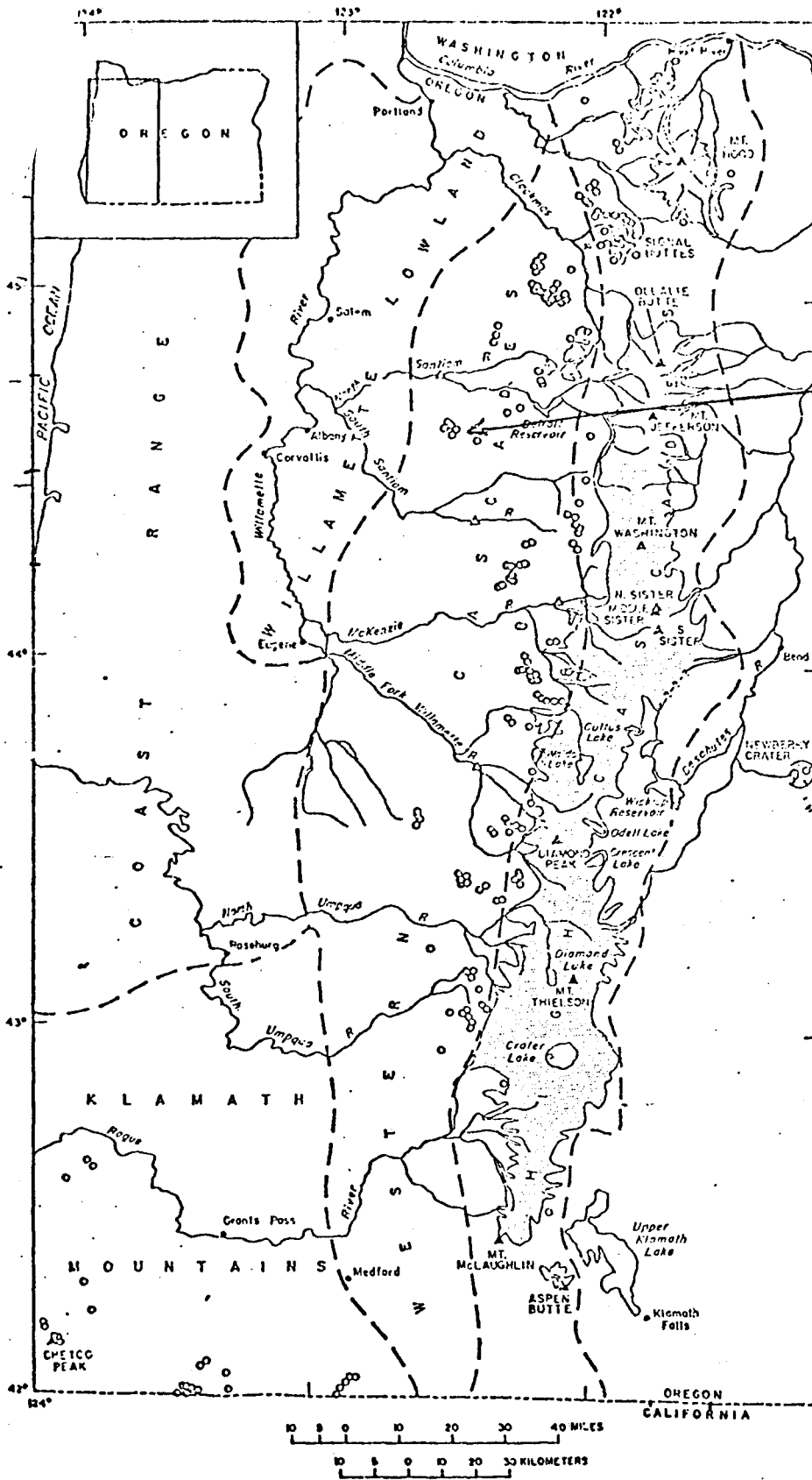


Figure 3. Extent of glacialiation (shaded pattern), in the Cascade Range and Klamath Mountains in Oregon. Small circles represent glaciers too small to show at true scale. Open triangles indicate maximum known westward extent of valley glaciers in the Western Cascades. Extent of ice shown probably represents the Frazer Glaciation but may locally include areas beyond that were last glaciated in Salton Springs(?) time. Extent of glacialiation in Mount Hood-Signal Buttes area chiefly from A. C. Waters (written communication); in drainage basin of North Santiam River from Thayer (1939); in Crater Lake area from Williams (1912). Extent of glacialiation at Newberry Crater is not known.

FIGURE 1.8 GLACIATION IN THE WESTERN CASCADES  
CRANDELL, 1965



FIGURE 1.9 LEFFIER GRAVELS  
MIDDLE PLEISTOCENE IN AGE,  
NEAR JORDAN, T.10S - R.1E SEC.4