

State Department of Geology and Mineral Industries

702 Woodlark Building
Portland, Oregon

Geological notes

COW LAKES LAVA FIELD

Unclassified District
Malheur County

Foreword: The Cow Lakes lava is a flow of glassy lava of recent age. An examination of a portion of this lava field was made by F. W. Libbey and N.S. Wagner on September 14th, 1947. A brief description of the field follows.

Location: This lava field occurs in the neighborhood of Cow Lakes which are in T 28 S, R 44 E. While only a portion of the occurrence was examined, the reported extent of the field is of such proportions that it very likely is to be found in at least some of the adjacent townships. Access is by a dirt road which turns off of the I.O.N. highway near Sheaville and follows down Cow Creek.

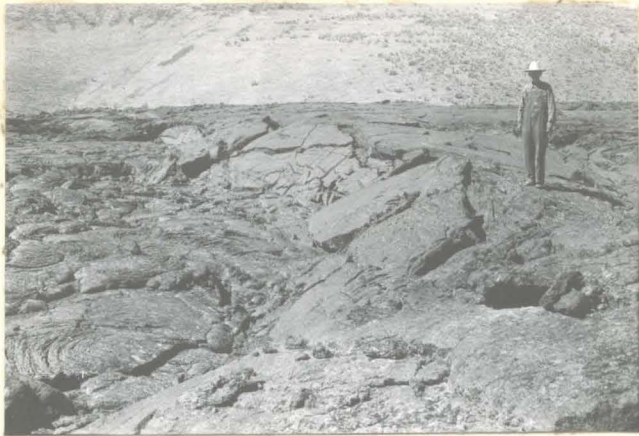
Geology: This flow is evidently one of quite recent origin. The sides of the tongue visited stand conspicuously higher than the soil surface of the draw down which it flowed. But little vegetation is to be seen on the flow surface which otherwise exhibits a variety of characteristic flow structures.

Remnants of a small crater exist on one margin of this flow at a point where it abuts a side hill of older volcanics. Eruption consisted of a relatively quiet flow as but a scant amount of explosive ejecta is to be seen in the area surrounding the crater.

The area of the flow not visited reportedly extends some 12 to 18 miles from this crater and includes some of the Cow Lakes and other lesser water-filled sink holes.

Report by: N.S. Wagner Oct. 3, 1947.

Cow Lakes Lava Field - Malheur County



Surface of lava field taken from near margin



Collapse holes reportedly common in this lava - This one about 30' deep



View from surface of flow showing remnants of crater in distance



Portion of crater shown in above picture