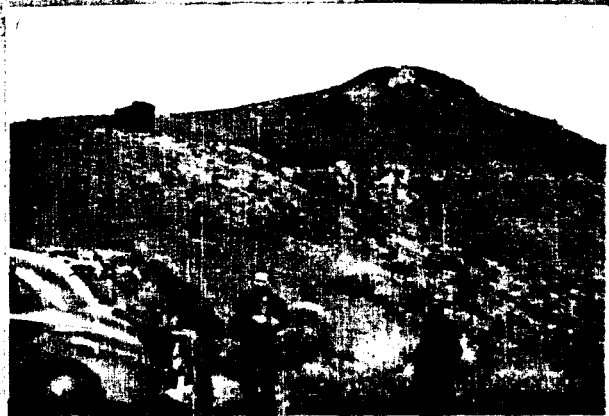


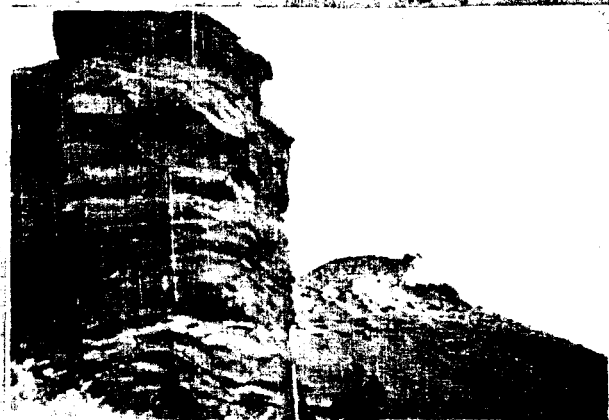


View showing general area in which several occurrences of clear calcite are reported. The main vein on the property covered by this report is up the hill to the left of the picture.

View looking west from the top of the hill. In particular, the lack of distinction between the bedding planes of the rock is noticeable.



View showing main vein which follows the crest of the hill from the left of the picture to a point on the skyline about halfway across the picture at which point it swings along the side of the hill and can be seen outcropping in large blocks against the crest of the highest part.



Another view from the pillar seen in the picture above. This shows more clearly the manner in which the veins outcrop and the extent to which they have been exposed to weather.



Another view of vein at top of hill taken almost along its strike and looking east

State Department of Geology and Mineral Industries

Iceland Spar Claims, Malheur County, Page 5.

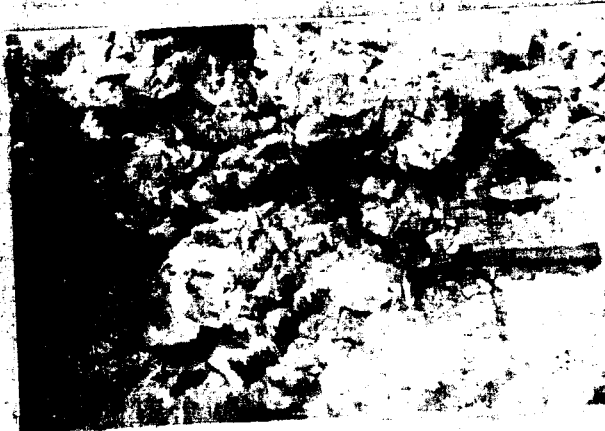
702 Woodlark Building
Portland, Oregon



...looking west showing section of vein and
...and in particular, the lack of
...on the bedding planes of the wall
...of the north side
...of the creek, on the 22 1/2 N. E.



Another view showing same features but
looking east and including two small
stringers in the hanging wall. Only a
portion of the main vein shows in the
extreme left of the picture.



This illustrates the massiveness and
intergrowth of the crystals at one of the
places where they attained appreciable
size.