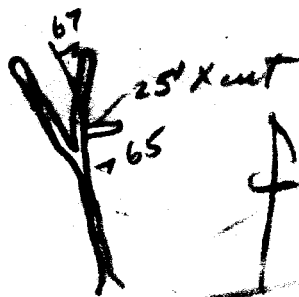


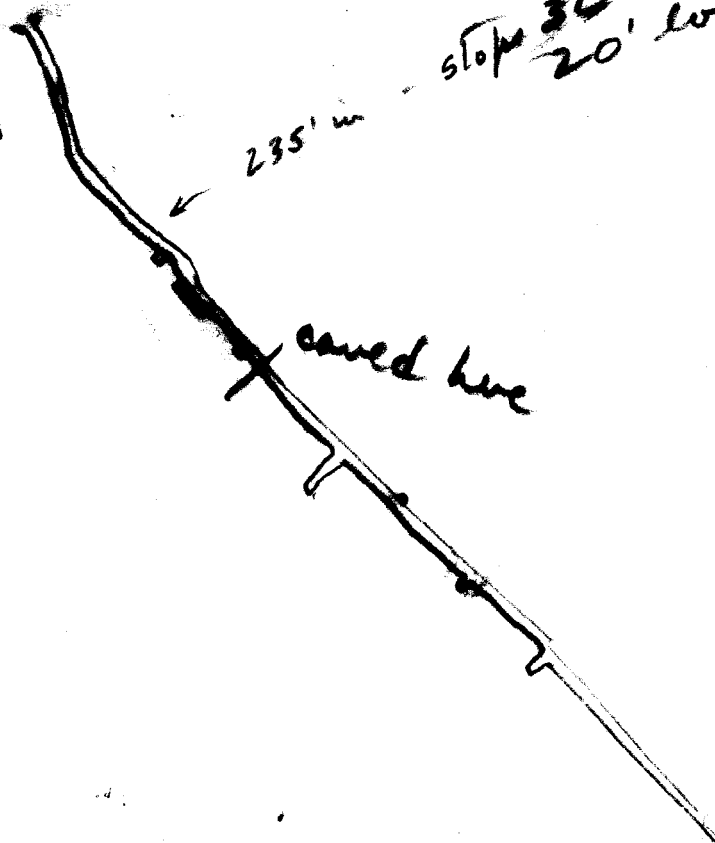
Santon Mine
July 17, 1945

166' = 1"



- Cave
- 20' - shoot
 - 70' "
 - 10' " (radius or narrow between top)
 - 25' " 50'+
 - 235' portal.
 - 350'

← RIVER



M.-72.0; $\frac{1}{2}$ MI E GOLD CR. (72.5)
 Portal on road, about $\frac{1}{2}$ m. W. of river forks (Hewitts)

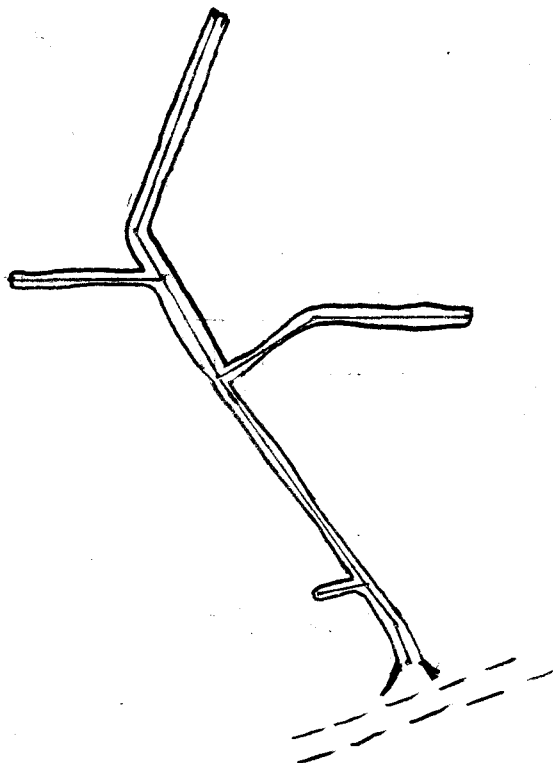
Portal N20°W - 50' ~~X~~
 (on rd) N35°W - 25' — X — S 80°W - 25' to W
 " -135' — [X N60°E - 60' to E
 E - 180' to face
 N 30°W - 60 X - ~~W~~ W - 80' face.
 " - 30
 N 20°E - 120' Face.

about 60-70' directly above river.

Scale 100' = 1"

Grey andesite, with arsenopyrite & chalcopyrite,
 secondary malachite stain.

Vein irregular, narrow, very little quartz,
 nearly vertical.



Sample from
 dump

19-7-95