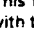
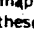


**INTERSTATE HIGHWAYS**

PRINCIPAL ROUTES Red, white and blue signs with 1 or 2-digit numbers. East-west routes have even numbers. North-south routes have odd numbers.

LOOP OR BELT ROUTES: These circle or bypass cities. 3-digit numbers, first number even.

BUSINESS ROUTES: Green signs. These mark routes from principal, loop or belt highways, to or through cities.

This map shows Interstate Highways with these symbols:  

SEE INSET MAP

GIFFORD PINCHOT NATIONAL FOREST

WASH. 21

HOODY RIVER

THE DALLES

WASC

NATL FOREST

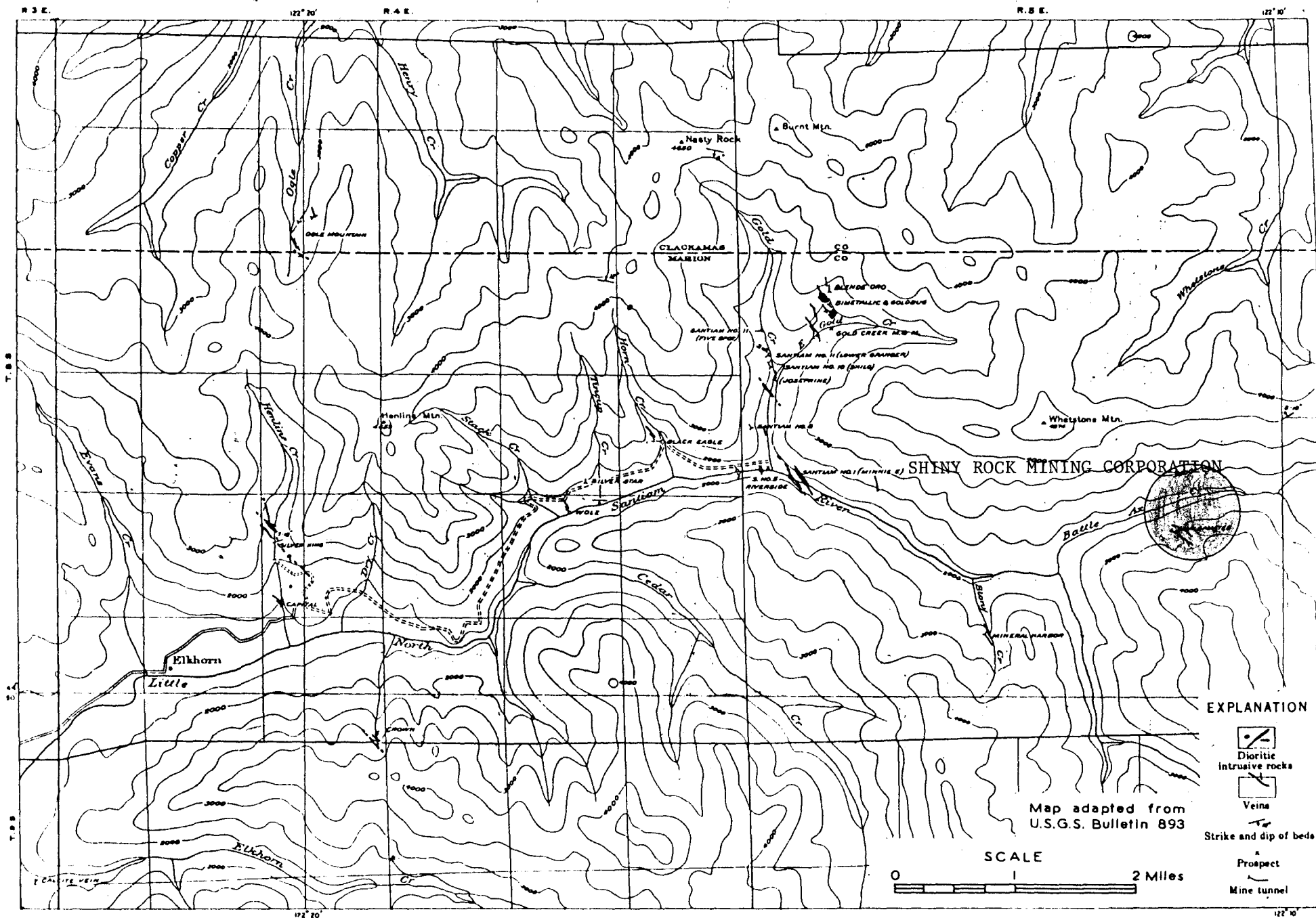
SHINY ROCK MINE

RESERVATION

DESCHUTES

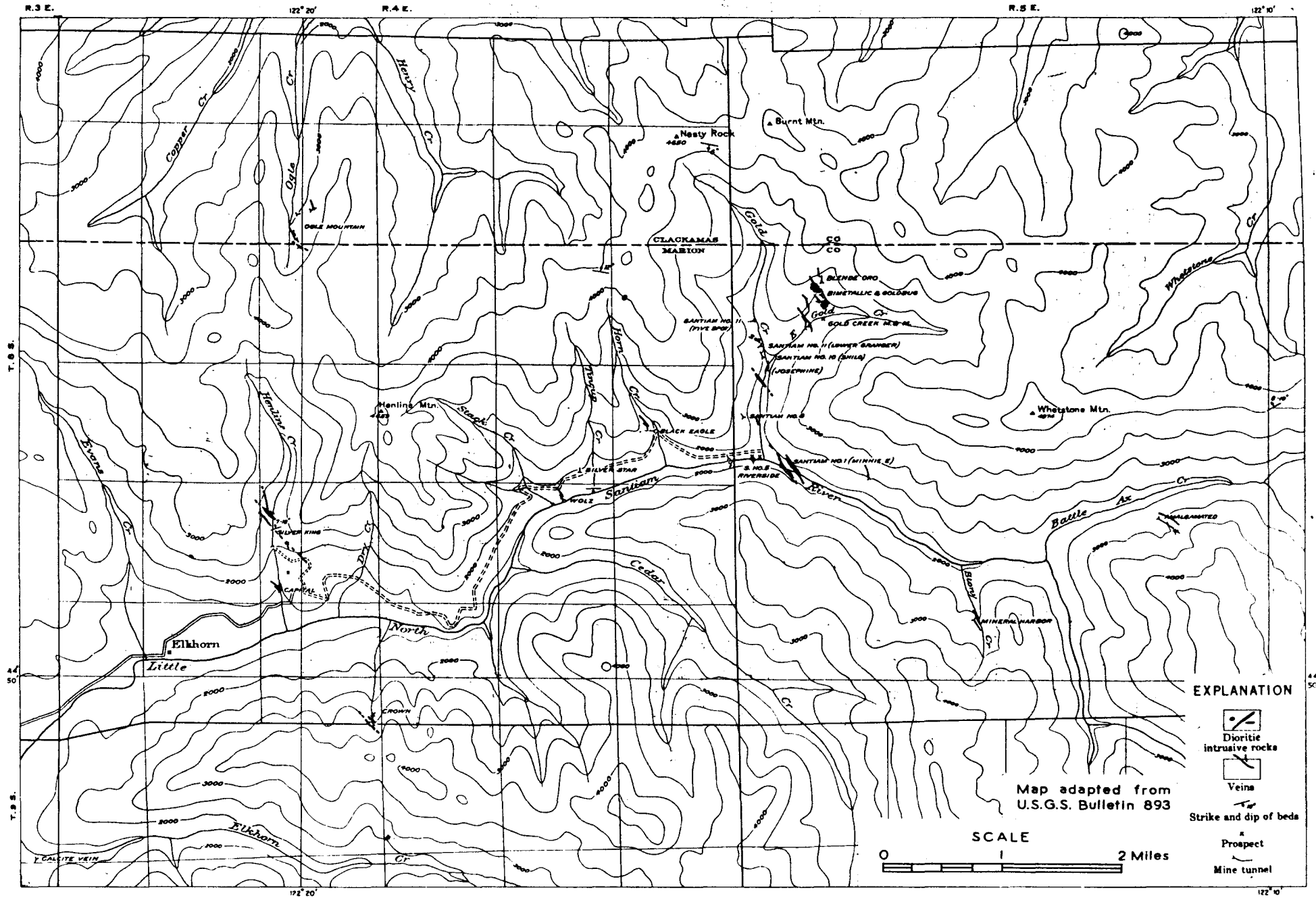
NATIONAL FOREST

BEND

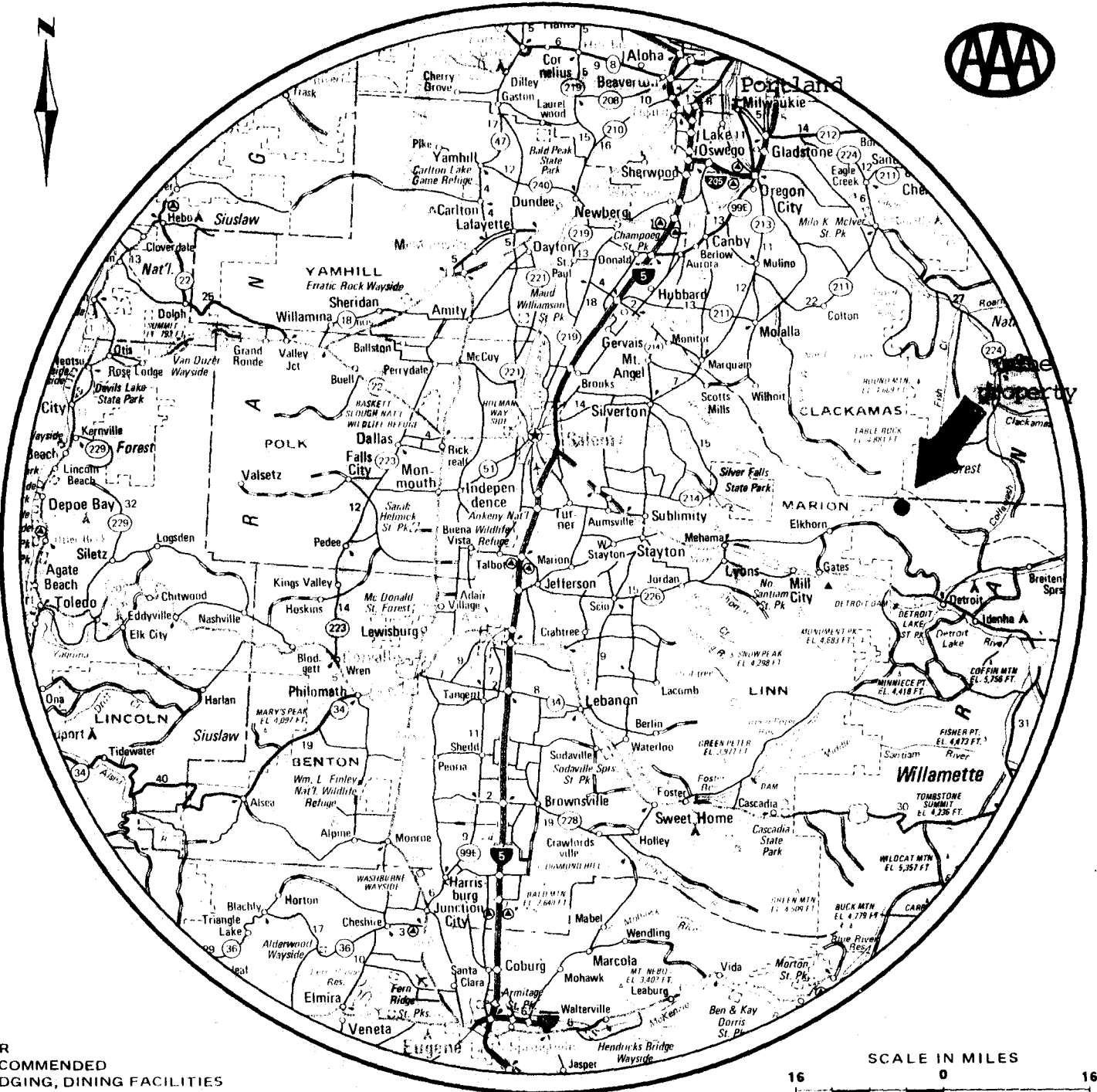


NORTH SANTIAM DISTRICT, MARION AND CLACKAMAS COUNTIES, OREGON.  
 Sketch map showing location of mines and prospects, veins, and dioritic intrusive bodies.

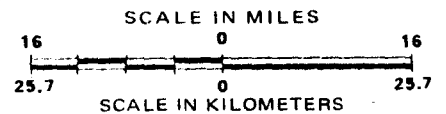
Fig. 7

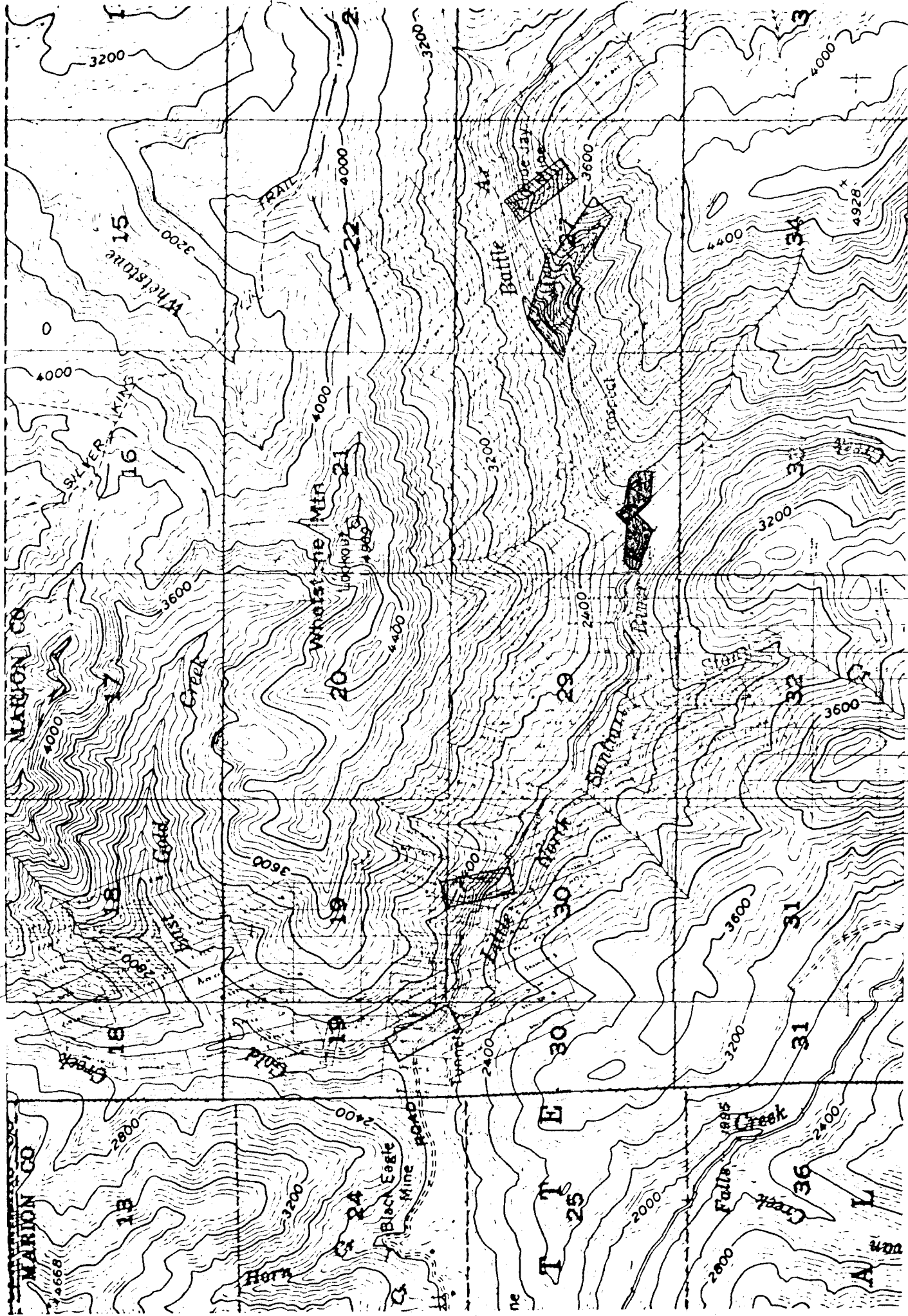


NORTH SANTIAM DISTRICT, MARION AND CLACKAMAS COUNTIES, OREGON.  
 Sketch map showing location of mines and prospects, veins, and dioritic intrusive bodies.



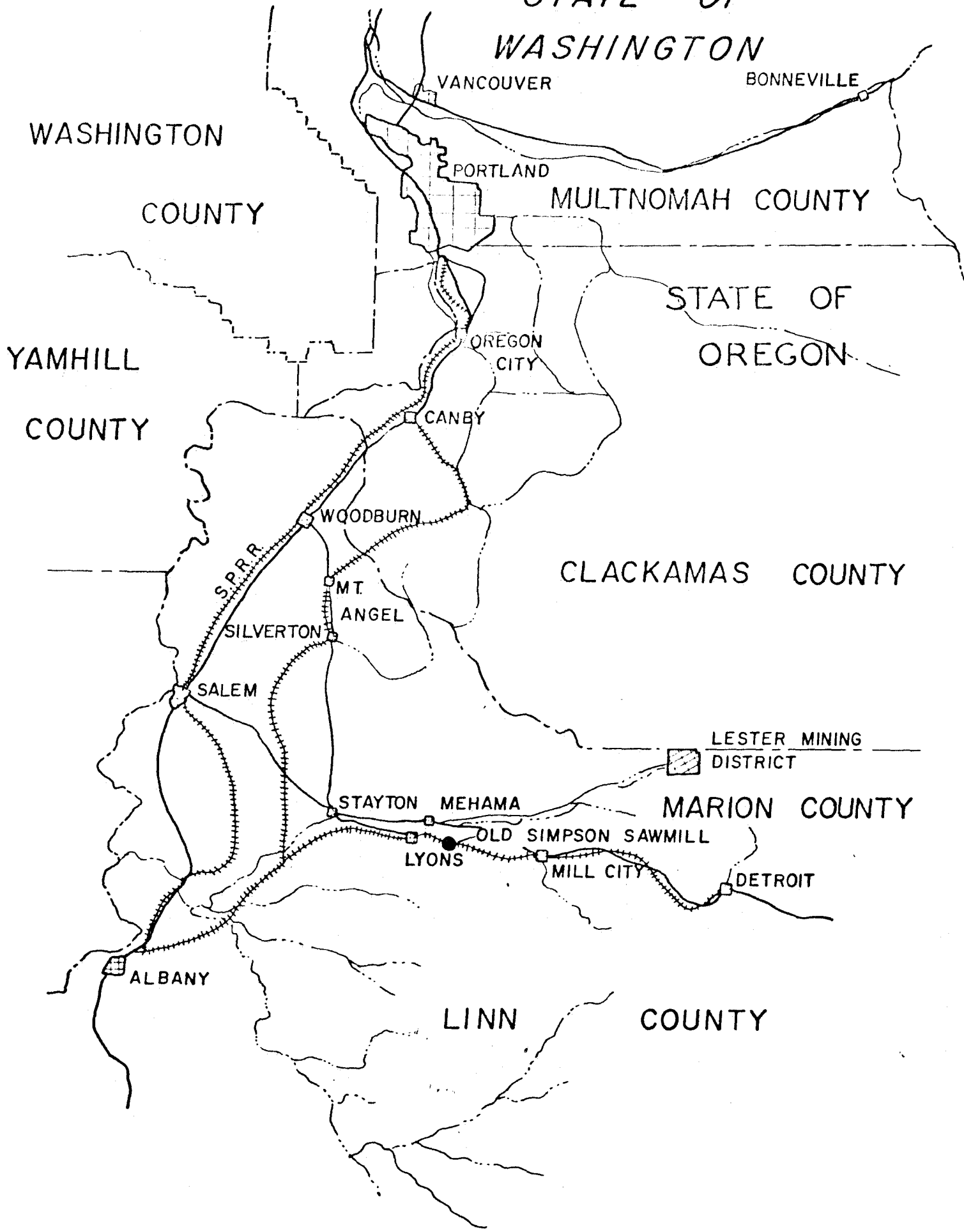
FOR  
RECOMMENDED  
LODGING, DINING FACILITIES  
AND POINTS OF INTEREST SEE:  
AAA OR/WA TourBook





SHEET NO. 2726 MARION CO. OR. 1917  
 DATE 4-1-17 SCALE  
 CHECKED W.A. DATE 4-1-17 1:10,000

STATE OF WASHINGTON





SITE 479 PLAN PERMETER

APPROX. 50 ACRES

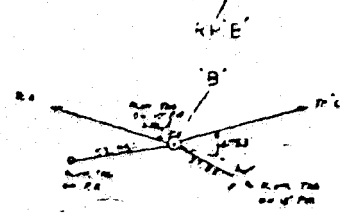
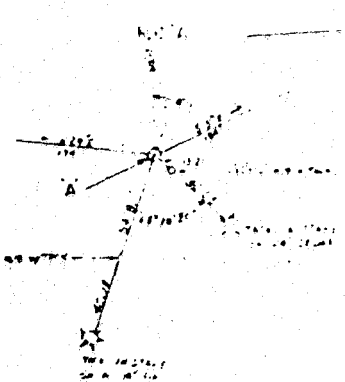
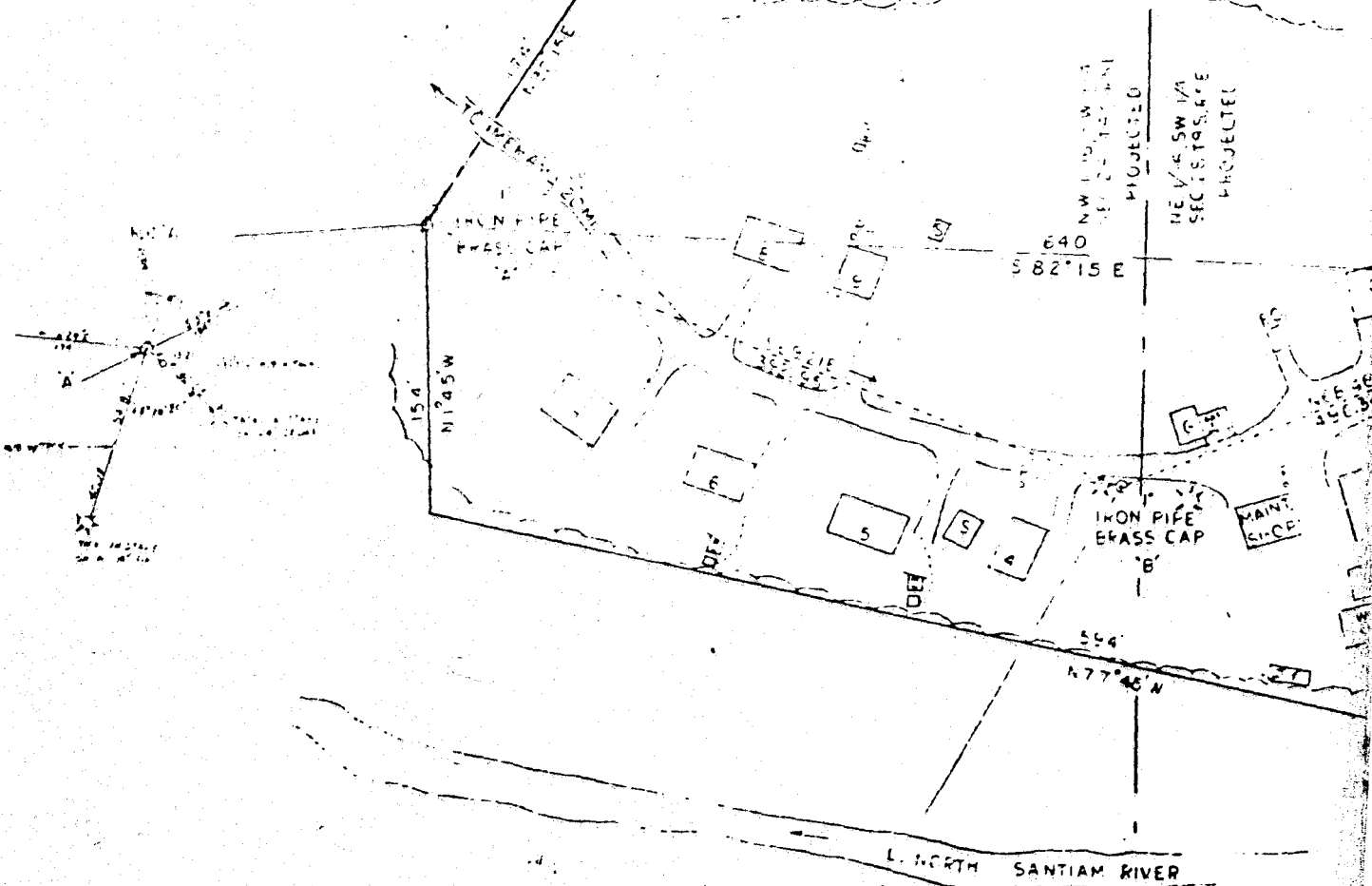
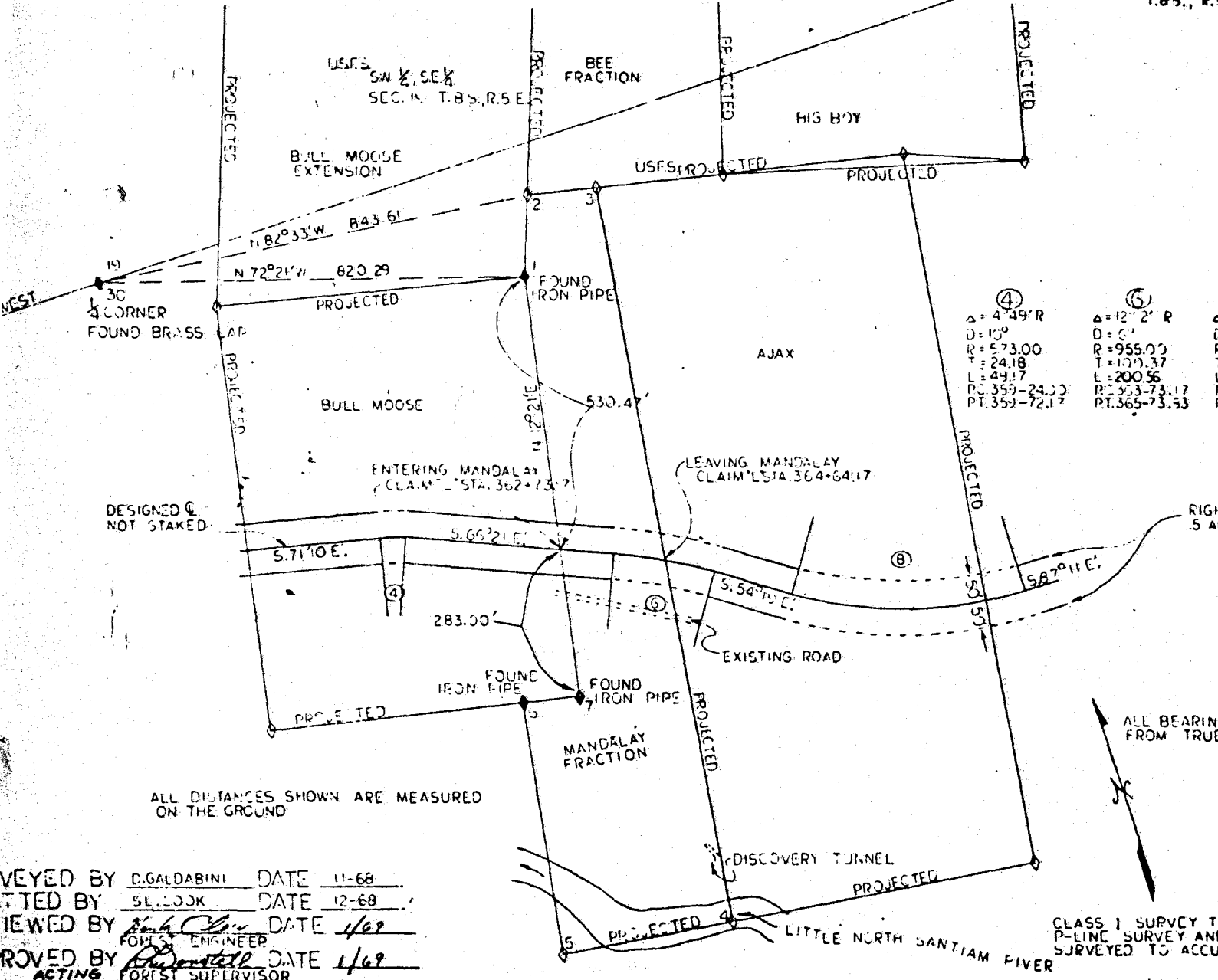


EXHIBIT "A"

NW 1/4 SEC. 37  
T.8S., R.5E.

5460  
RIGHTS-OF-WAY ACQUIRED  
SANTIAM COPPER MINES INC.  
MANDALAY CLAIM M.S. NO. 223  
BULLHORN LAKE ROAD NO. 580  
SEC. 30, T.8S., R.5E., WM.  
WILLAMETTE NATIONAL FOREST  
MARION COUNTY, OREGON



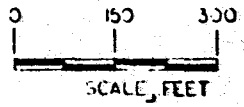
④	⑥	⑧
Δ = 4°49'R	Δ = 12°2'R	Δ = 32°52'L
D = 15'	D = 6'	D = 7'
R = 573.00	R = 955.00	R = 213.50
T = 24.18	T = 100.37	T = 241.45
L = 49.17	L = 200.56	L = 409.52
PC 359-24.00	PC 363-73.17	PC 367-122.3
PT 359-72.17	PT 365-73.53	PT 371-52.35

RIGHT OF WAY WIDTHS AS SHOWN  
5 ACRES MORE OR LESS

DESIGNED &  
NOT STAKED

ALL DISTANCES SHOWN ARE MEASURED  
ON THE GROUND

ALL BEARINGS ARE  
FROM TRUE NORTH



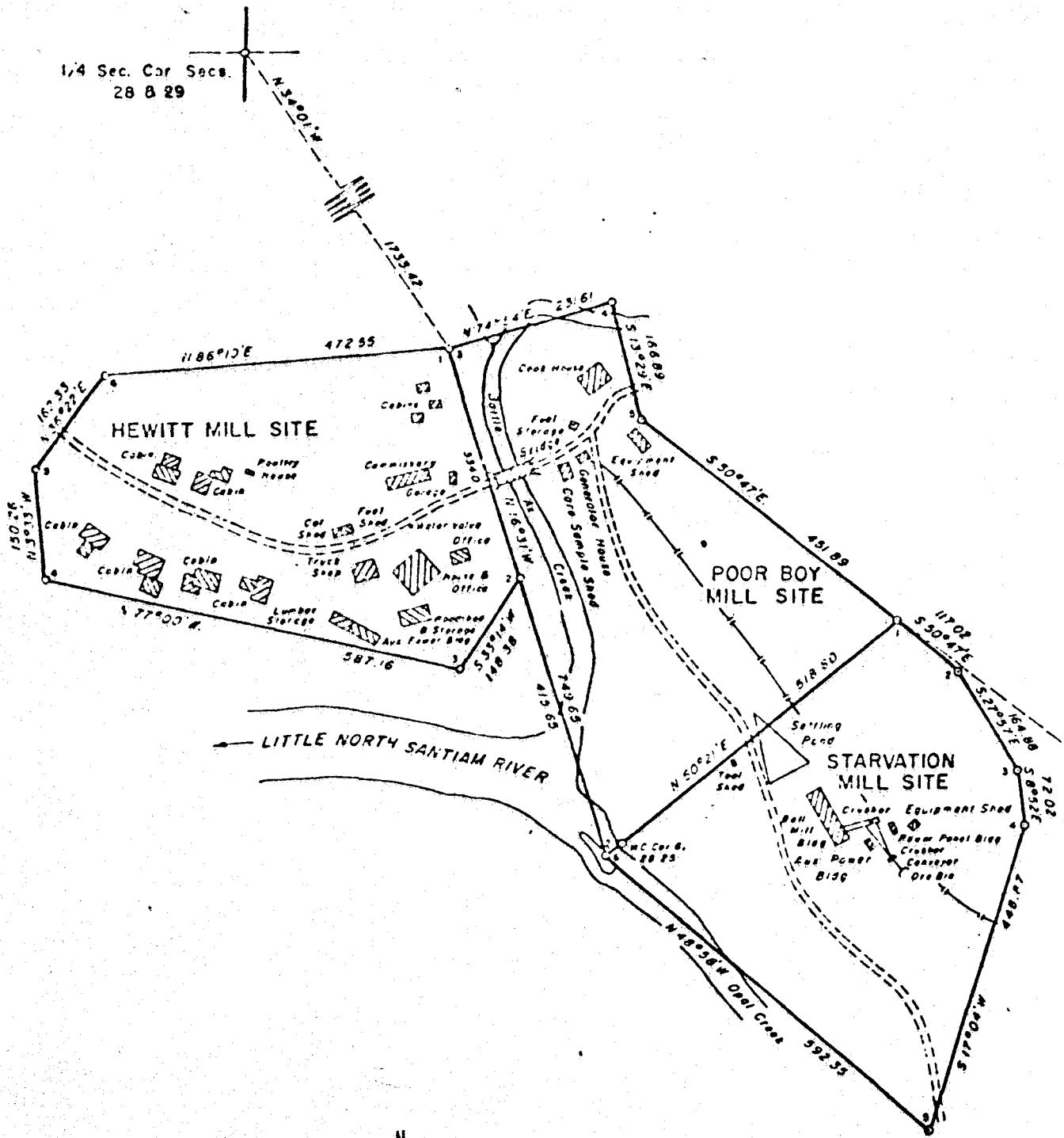
- LEGEND
- == EXISTING ROAD
  - - RW LIMITS ON CURVES
  - - RW LIMITS ON TANGENTS
  - ◆ CORNERS FOUND
  - CORNERS PROJECTED

CLASS 1 SURVEY TRANSIT & CHAIN  
P-LINE SURVEY AND CORNER TIES  
SURVEYED TO ACCURACY OF 1:4000

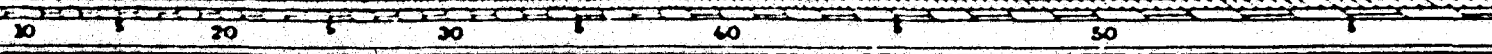
SURVEYED BY D. GALDABINI DATE 11-68  
 CHECKED BY SL. JOCK DATE 12-68  
 REVIEWED BY [Signature] DATE 1/69  
 APPROVED BY [Signature] DATE 1/69  
 ACTING FOREST SUPERVISOR



1/4 Sec. Cor Secs.  
28 B 29



MS 990

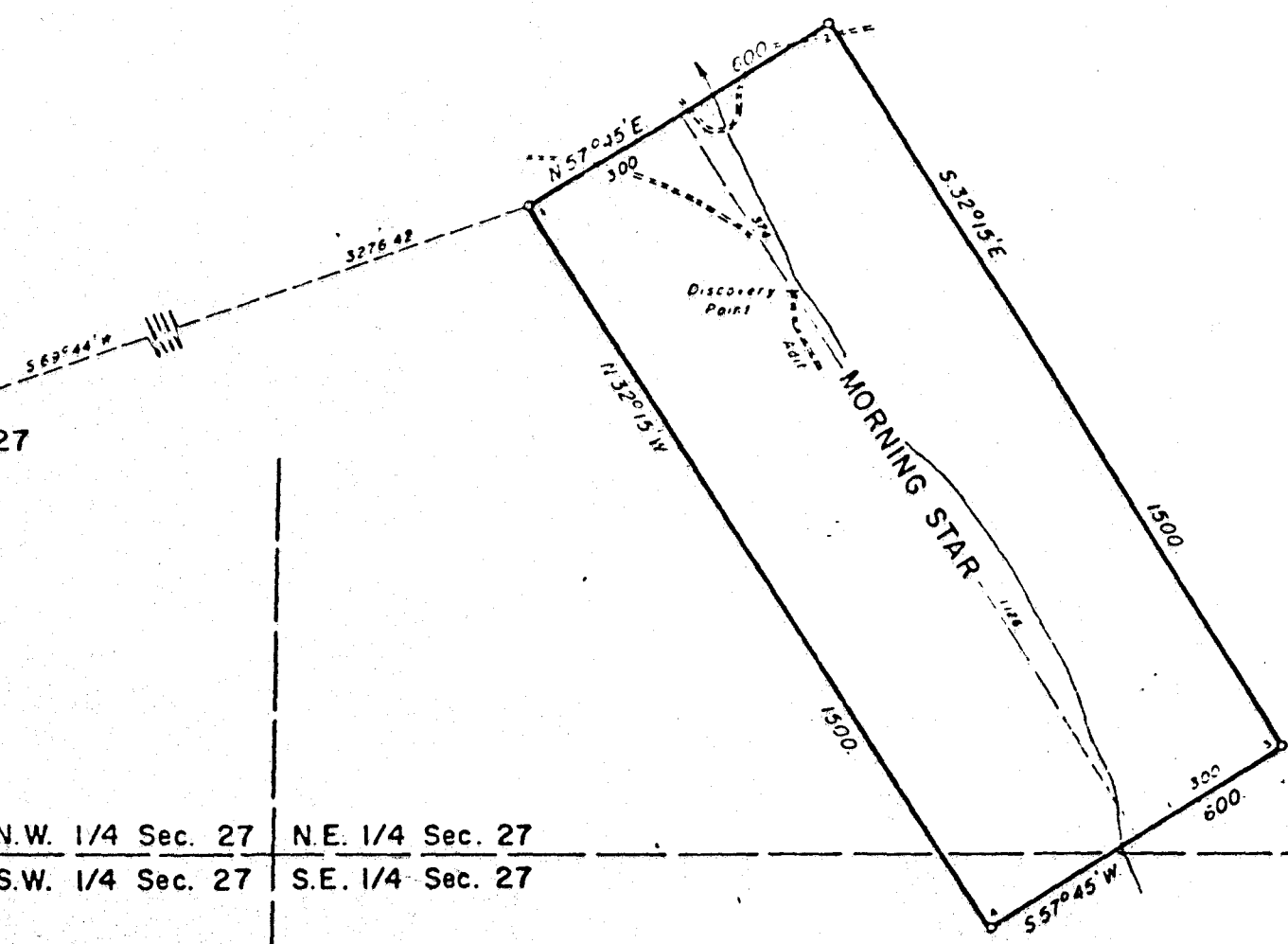






c. 28 | Sec. 27  
1/4 Sec. Cor.

N.W. 1/4 Sec. 27 | N.E. 1/4 Sec. 27  
S.W. 1/4 Sec. 27 | S.E. 1/4 Sec. 27



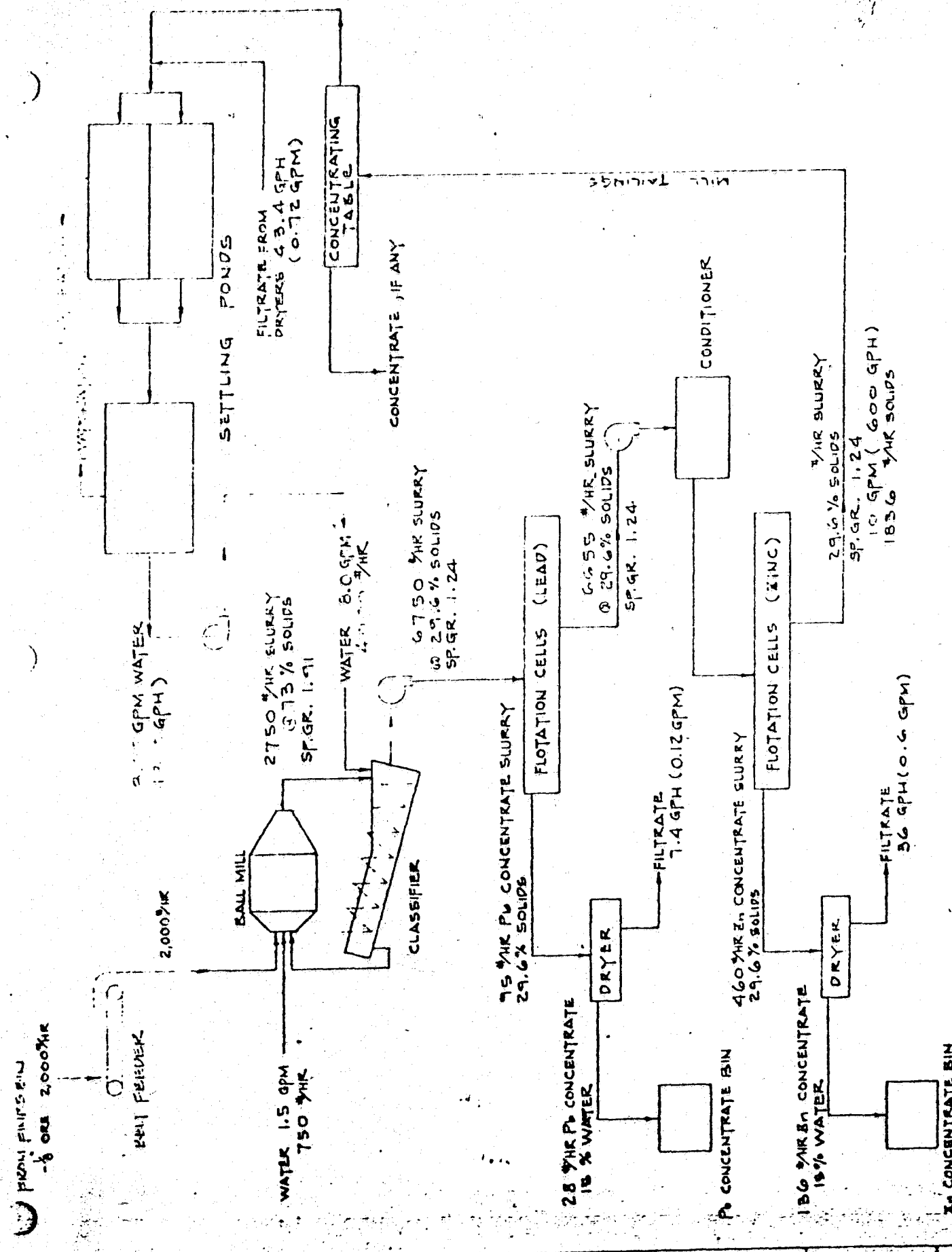


**LEAD-ZINC FLOTATION FLOWSHEET**  
**SHINY ROCK MINING CORP.**

**STORCH CORPORATION**  
 ENGINEERS PORTLAND OREGON

Drawn M.Y.  
 Checked  
 Job no 0231

FS-2



**BASIC LEAD-ZINC FLOTATION FLOWSHEET**

**SHINY ROCK MINING CORPORATION**

T. 8 S.

(N)

MILL CITY 18 MI.

(SPAC)  
WRETS 1-21

33597

19

30

NORTH

29

SOUTH

— New Constr

⊙ Drill Site

— Recast

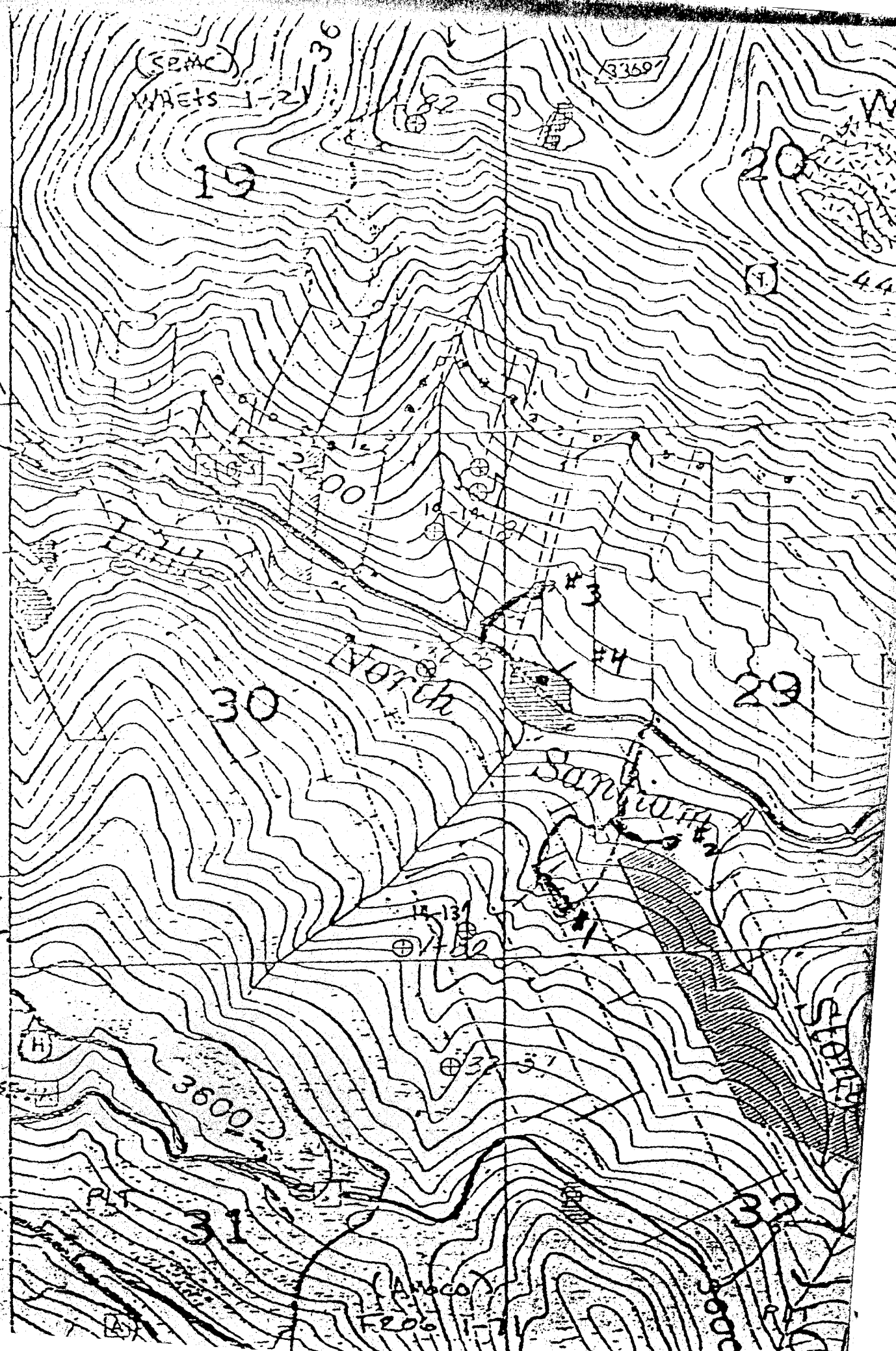
3600

31

(ANOCO)  
F206

30

STATE







35.

(SPMC)  
WHEATS

2360

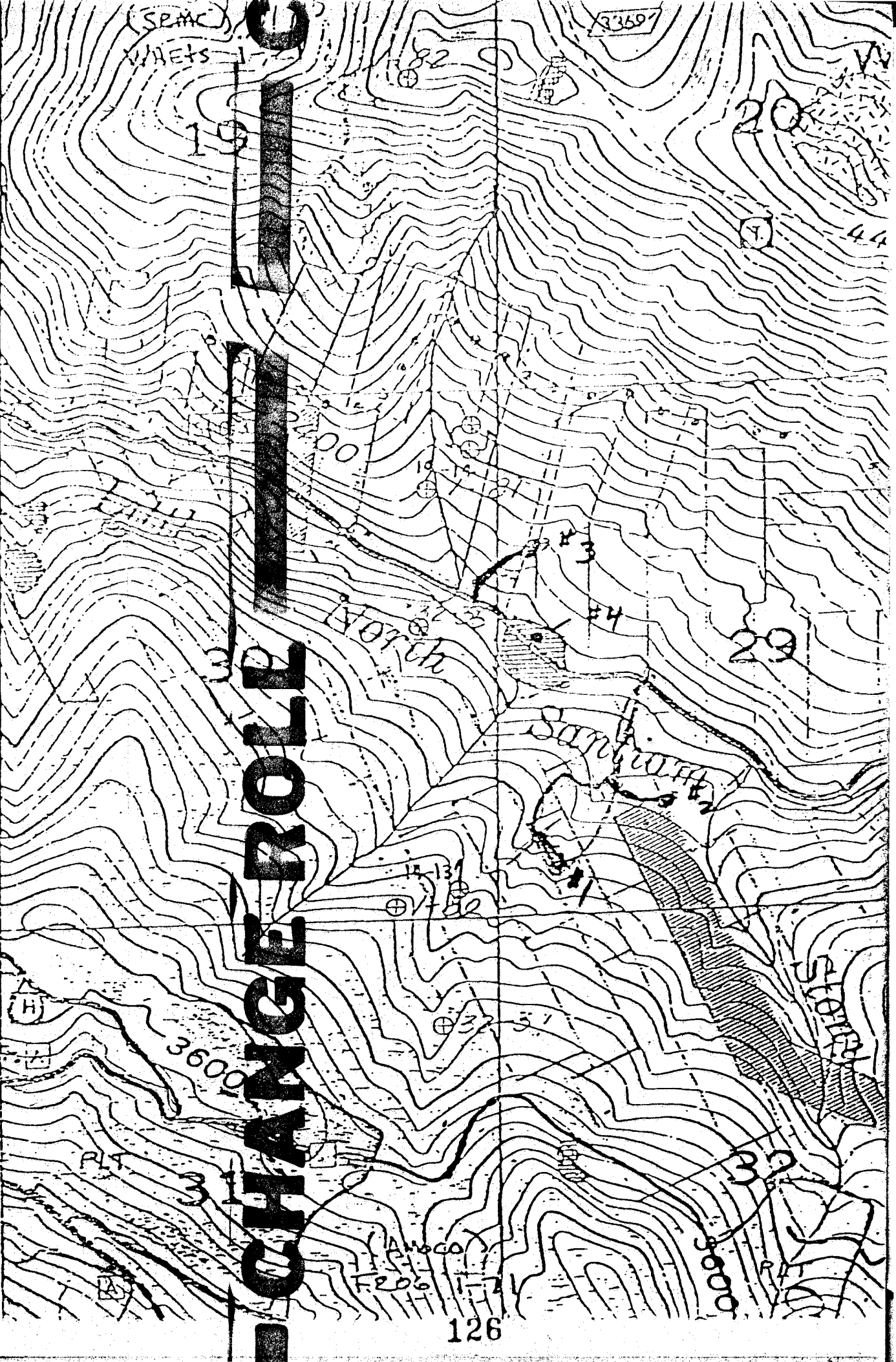
MILL CITY 18 MI. ↗

# CHANGE ROLL

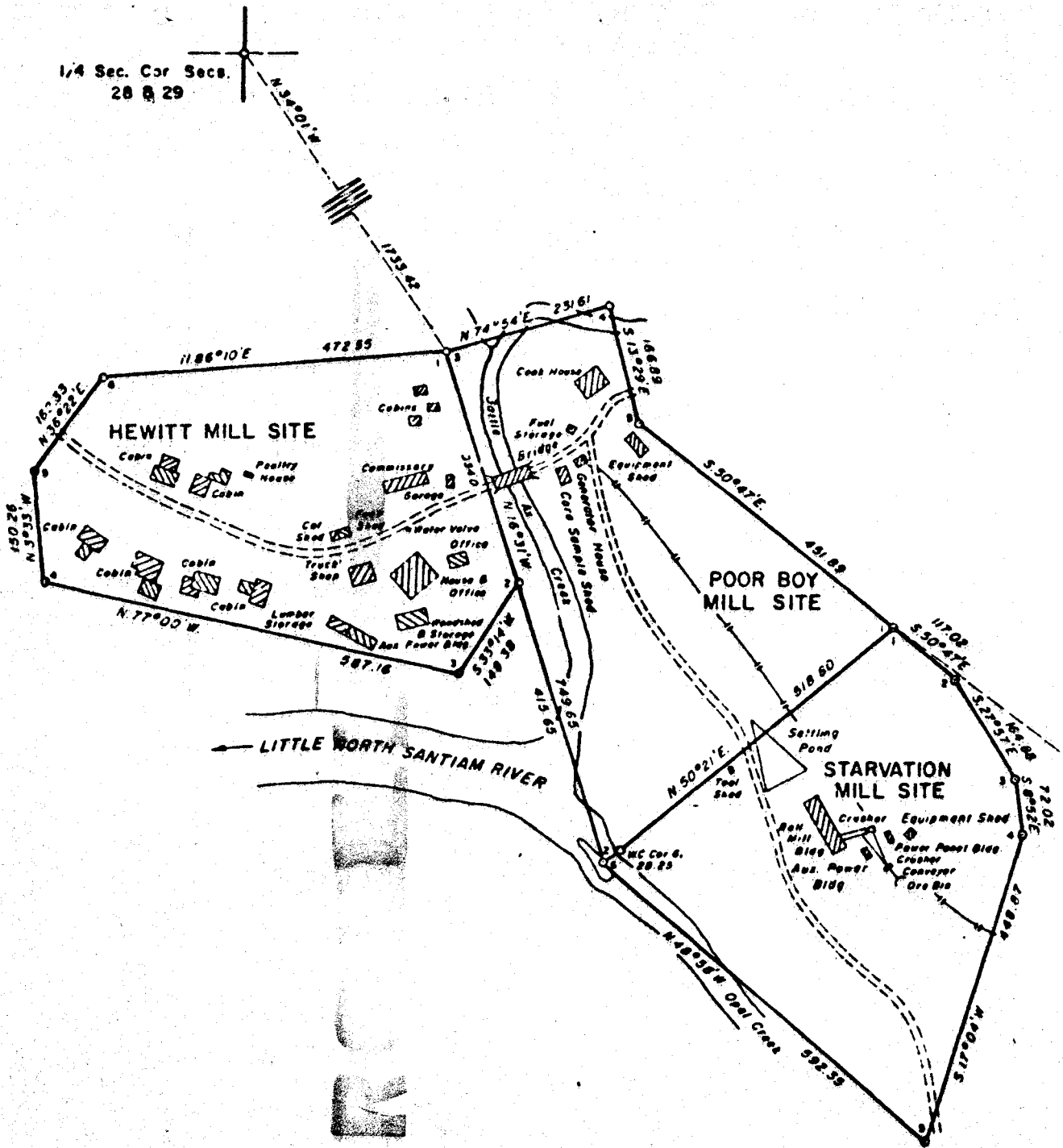
— New  
Constr

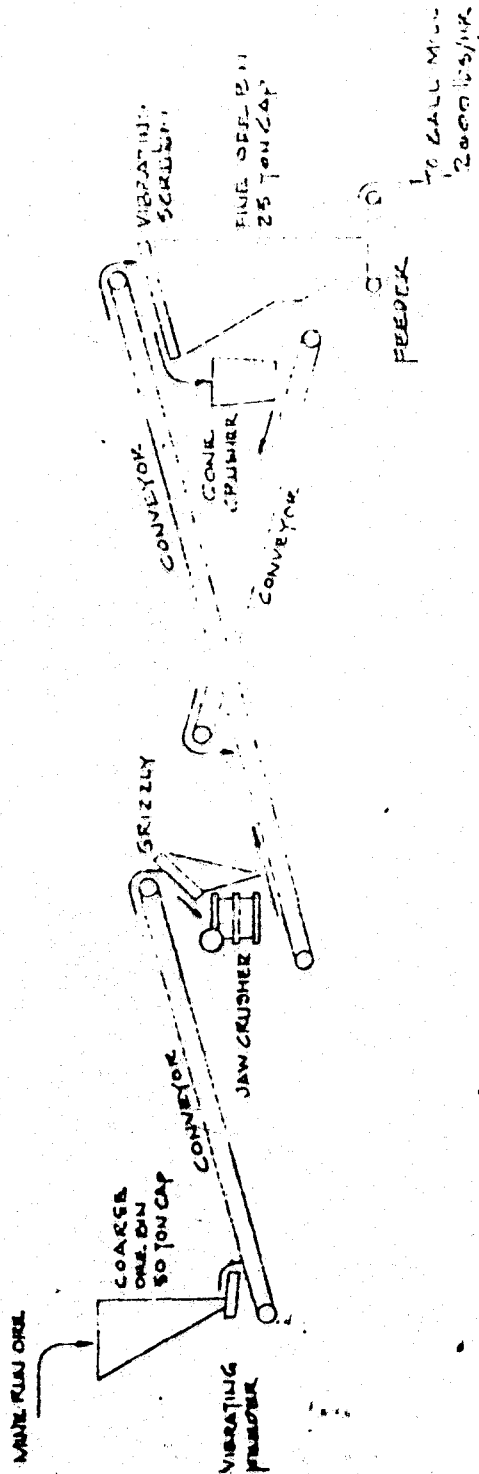
⊙ Drill  
Site

— Recast



1/4 Sec. Cor Secs.  
28 & 29





OPERATION 8 HRS/DAY  
CAPACITY 3 TONS/HR

ORE PREPARATION FLOW SHEET

SHINY ROCK MINING CORPORATION

ORE PREPARATION FLOW SHEET  
SHINY ROCK MINING CORP.  
MADAMA OREGON

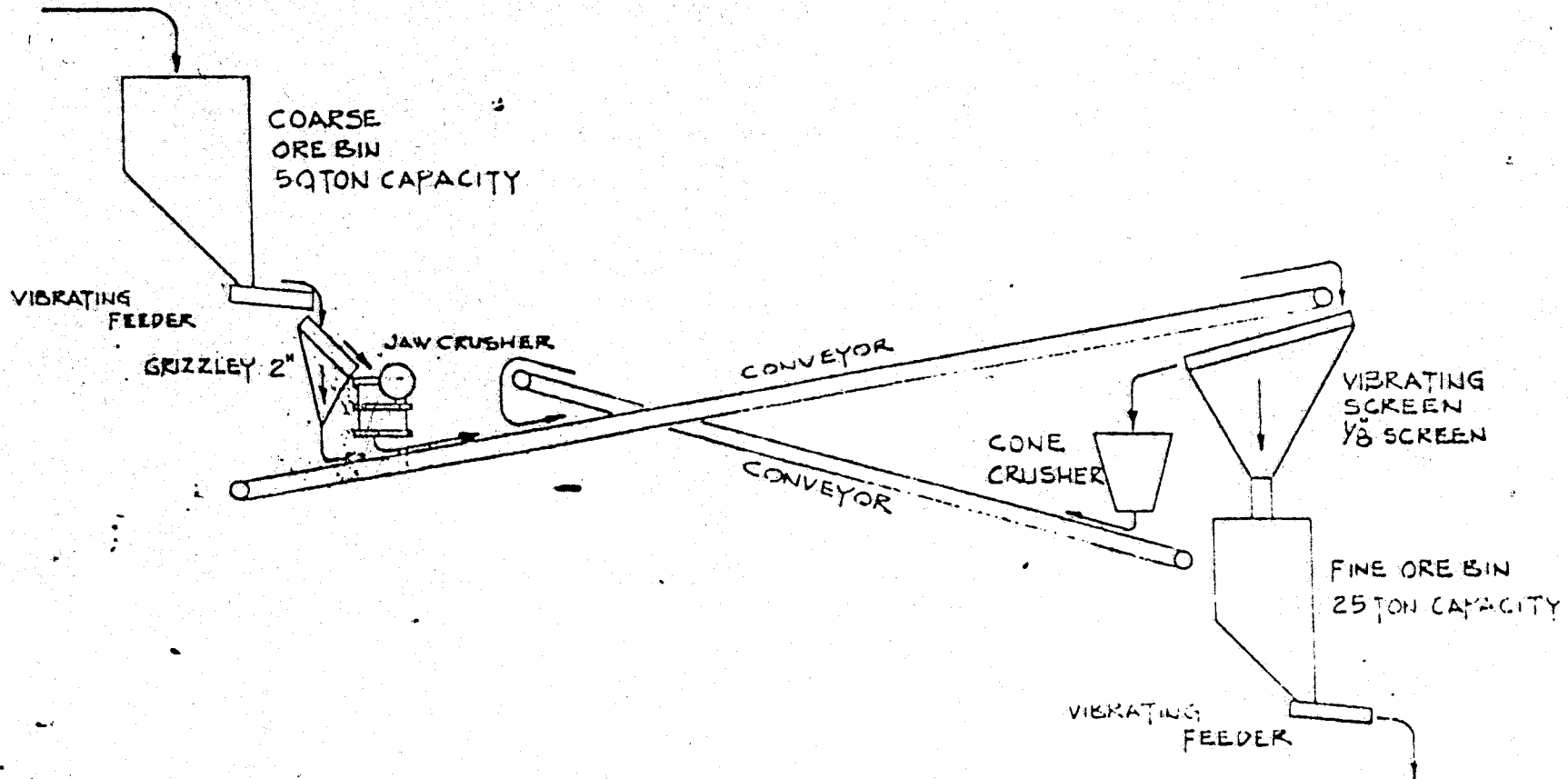
STORCH CORPORATION  
ENGINEERS PORTLAND, OREGON

Drawn M. Y.  
checked  
job no 0231  
date 10-18-75

F.S.

SHINY ROCK MINING CO.

MINE RUN ORE



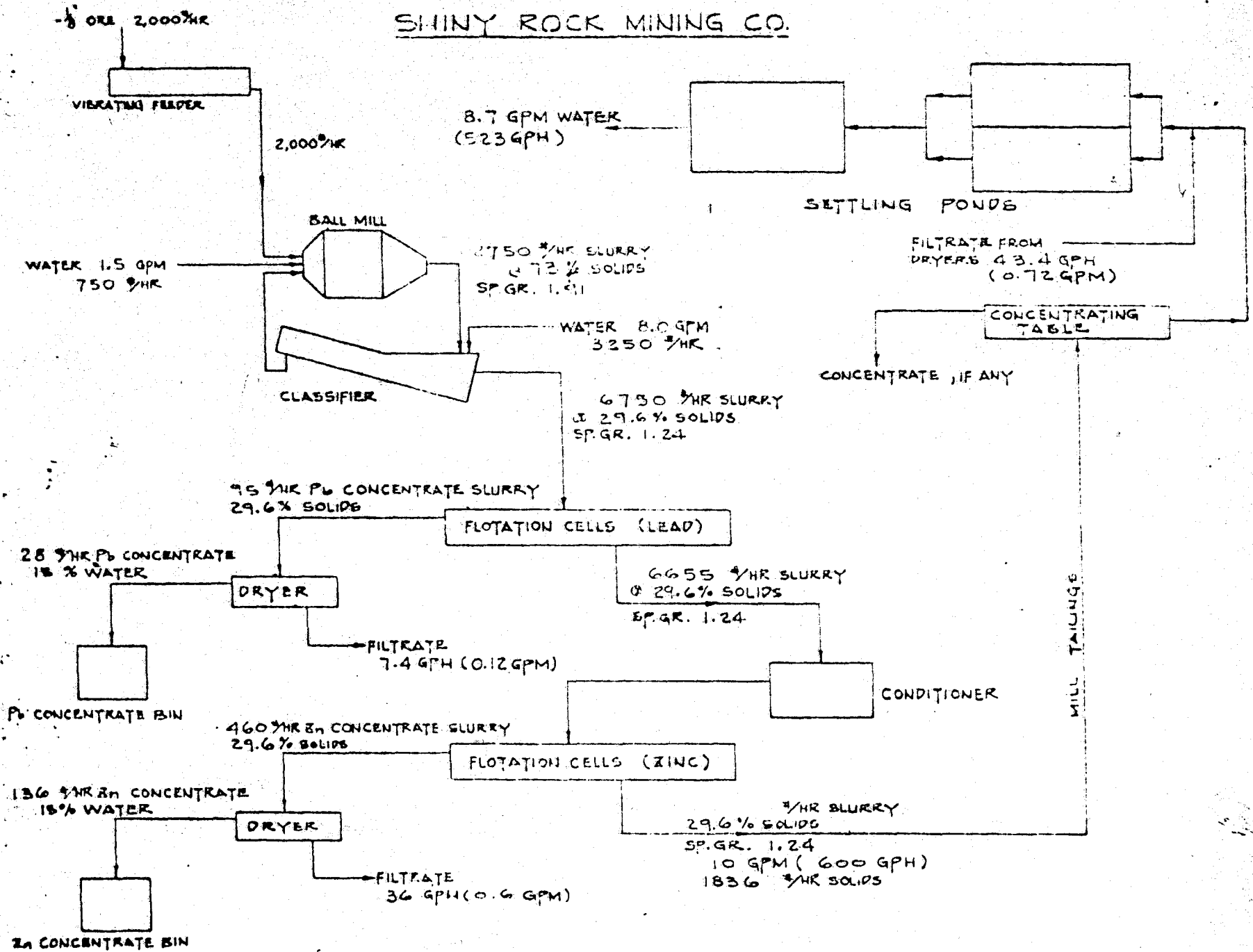
OPERATION . . . 8 HRS/DAY  
CAPACITY . . . 3 TONS/HR

TO BALL MILL  
-1/8"  
2000#/HR

ORE PREPARATION FLOW SHEET

AUG. 27, 1975 MY

SHINY ROCK MINING CO.



BASIC LEAD-ZINC FLOTATION FLOWSHEET

AUG. 26, 1975 M.Y.