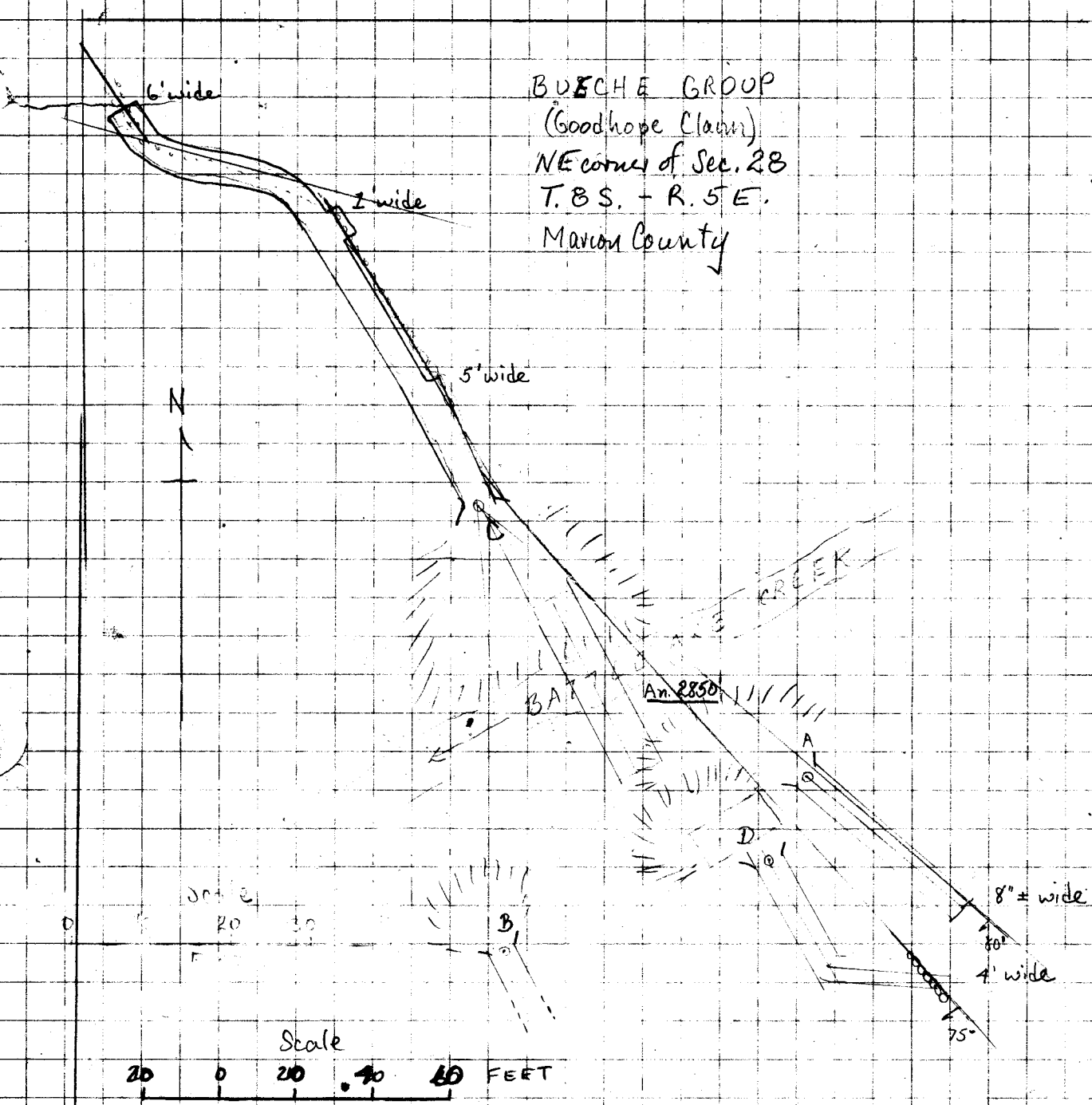


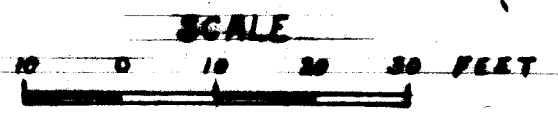
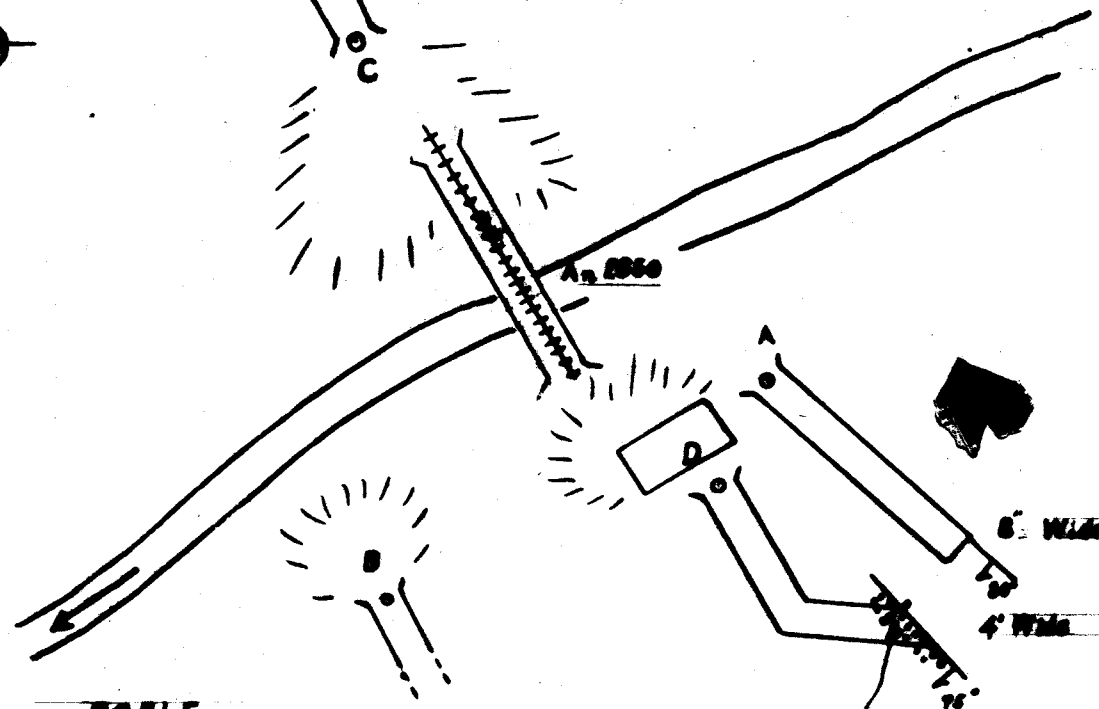
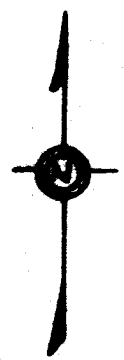
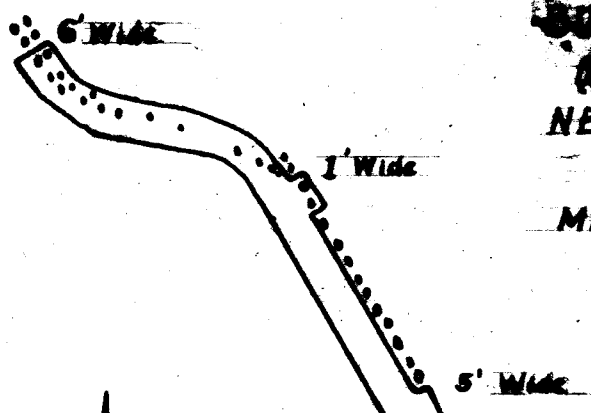
JEA notes

BUECHE GROUP
(Goodhope claim)
NE corner of Sec. 28
T. 8 S. + R. 5 E.
Marion County



Included in Amalgamated (?) Probably

LECHE GROUP
(includes **CHM**)
NE Corner of Sec. 28
T. 8 S. - R. 5 E.
MARION COUNTY



Sample D - 5'
Zn 3.4%

JEA '41