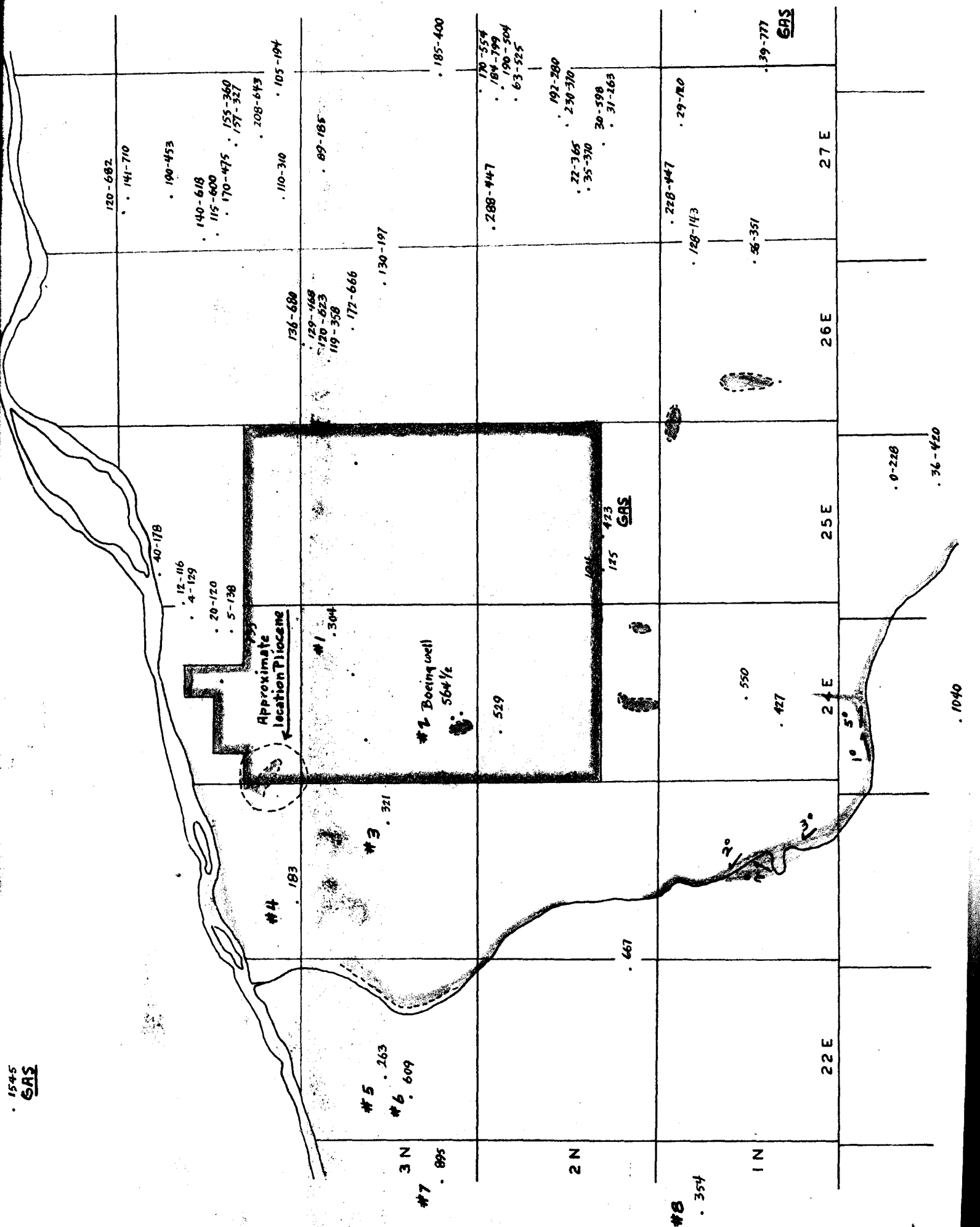


1545
GAS



GAS

GAS

Approximate location Pliocene

#2 Boeing well 564 1/2

#1 304

#3 321

#4 183

#5 263

#6 609

#7 895

#8 354

22 E

24 E

25 E

26 E

27 E

10° 5'

20°

30°

1040

0-228

36-420

39-777

36-351

228-447

128-143

288-447

22-365

35-370

192-280

230-370

30-598

31-263

185-400

170-554

184-799

190-504

63-525

110-310

105-194

136-680

129-468

120-623

119-358

177-666

130-197

120-682

141-710

190-453

140-618

115-600

170-475

155-360

157-327

208-643

GAS

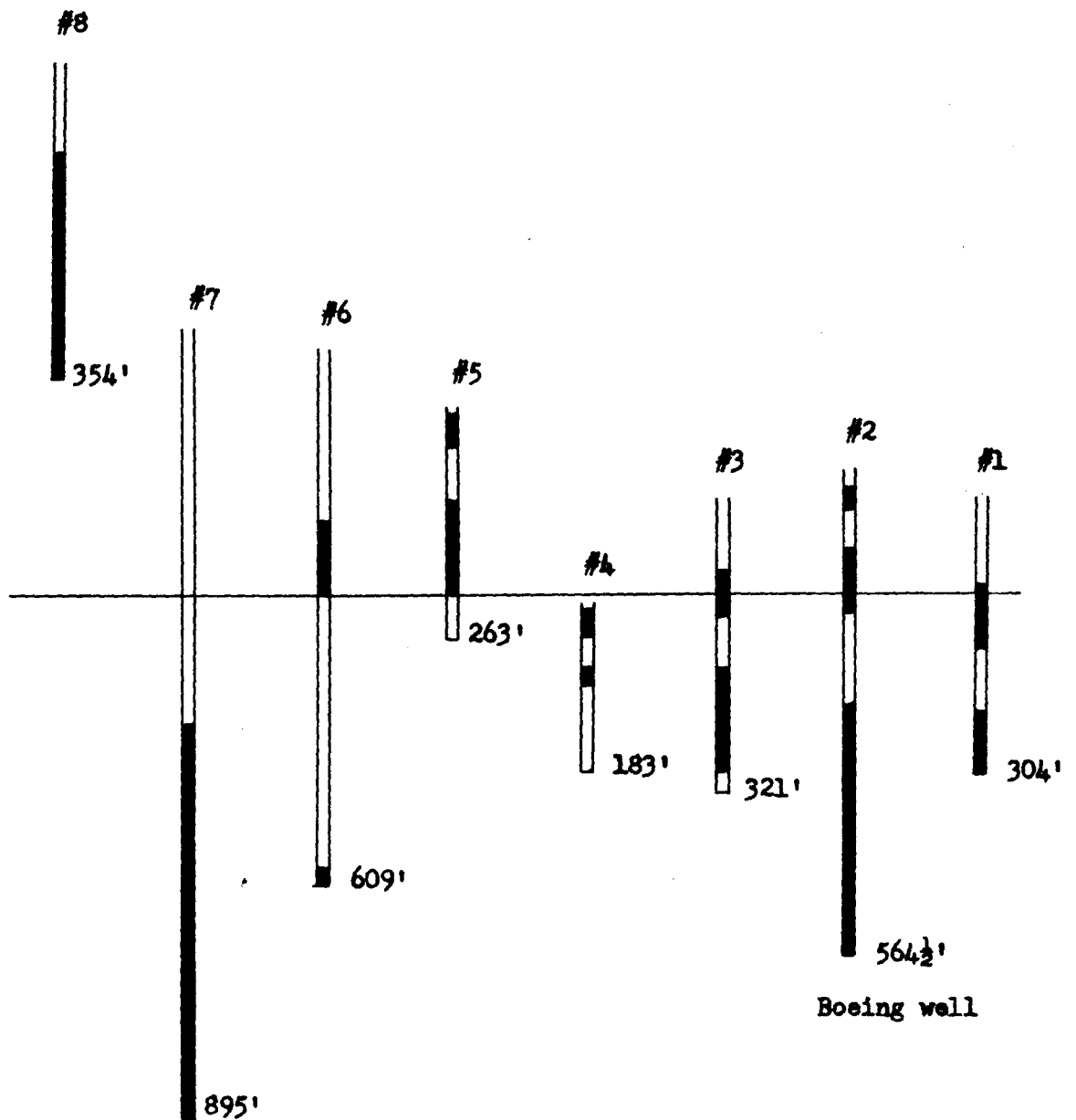


Figure 3. Reported basalt-sediment relationships at depth under the Boardman Bombing and Gunnery Range and area to the west thereof.

Well locations may be identified by reference to Figure 1.

Collar elevations as indicated here were calculated from well locations plotted on USGS 30' topographic quadrangles; hence approximate only.

Solid well sections represent basalt. All open sections represent logged sediments.

One quarter inch equals fifty feet (vertical scale).