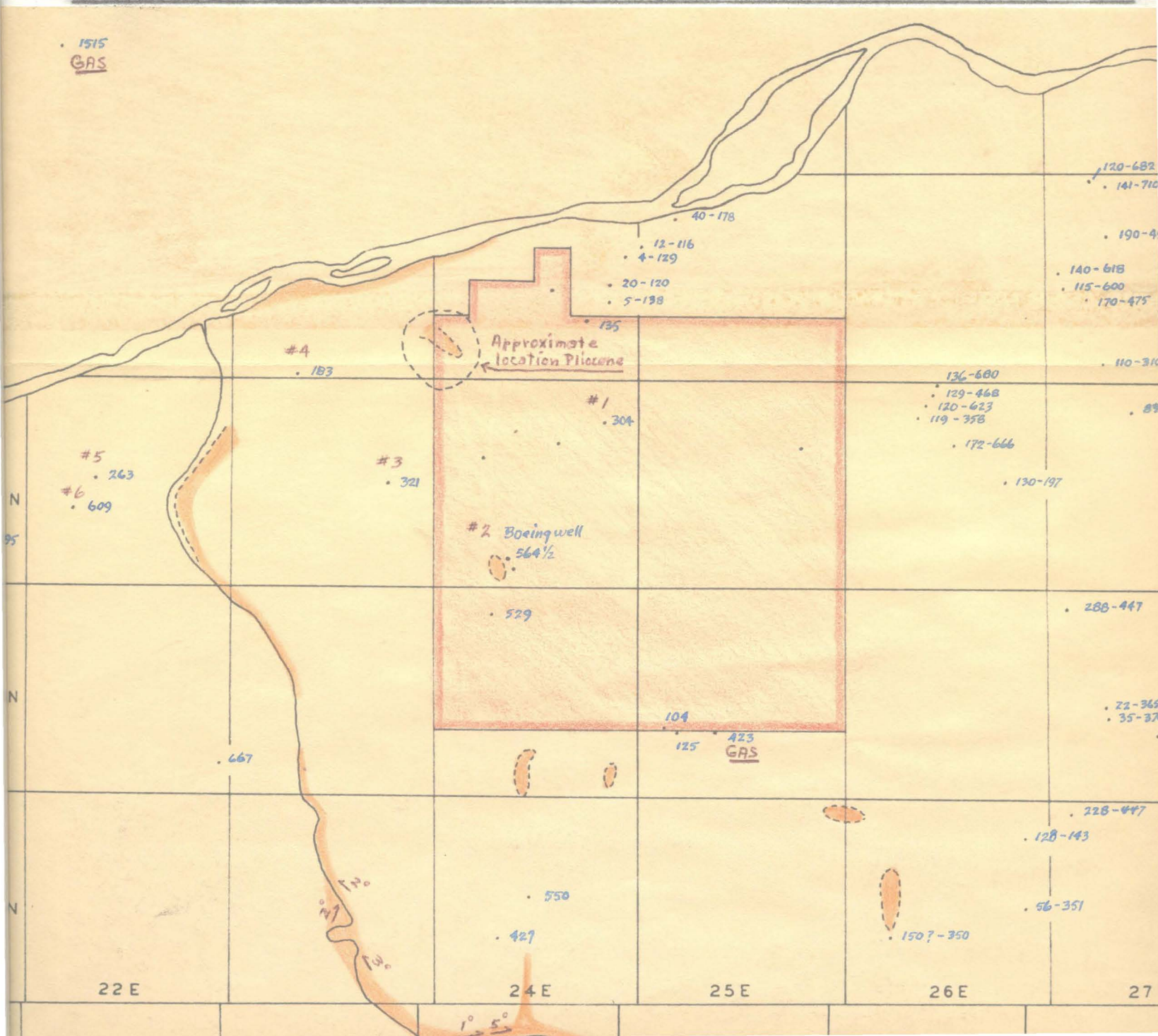
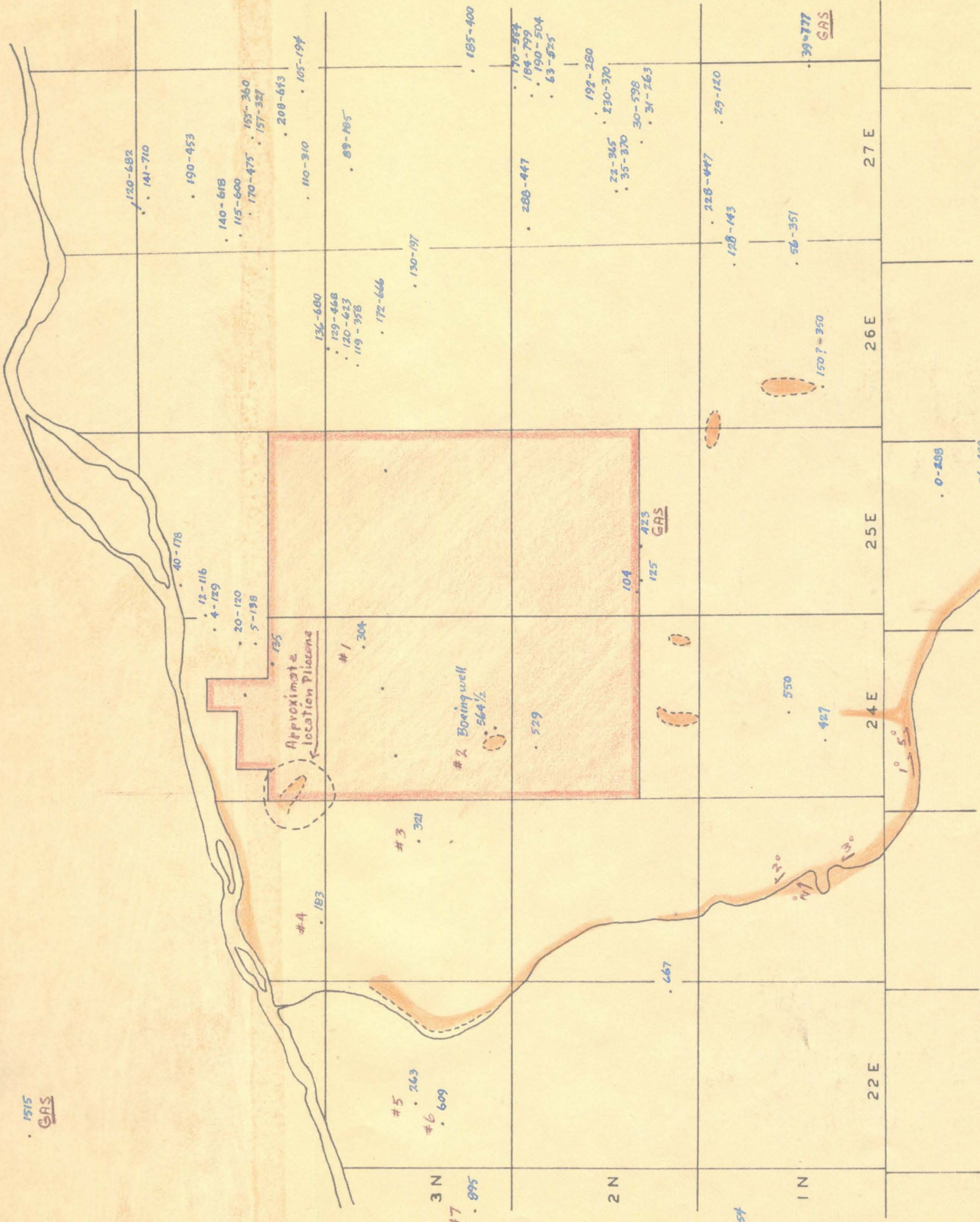


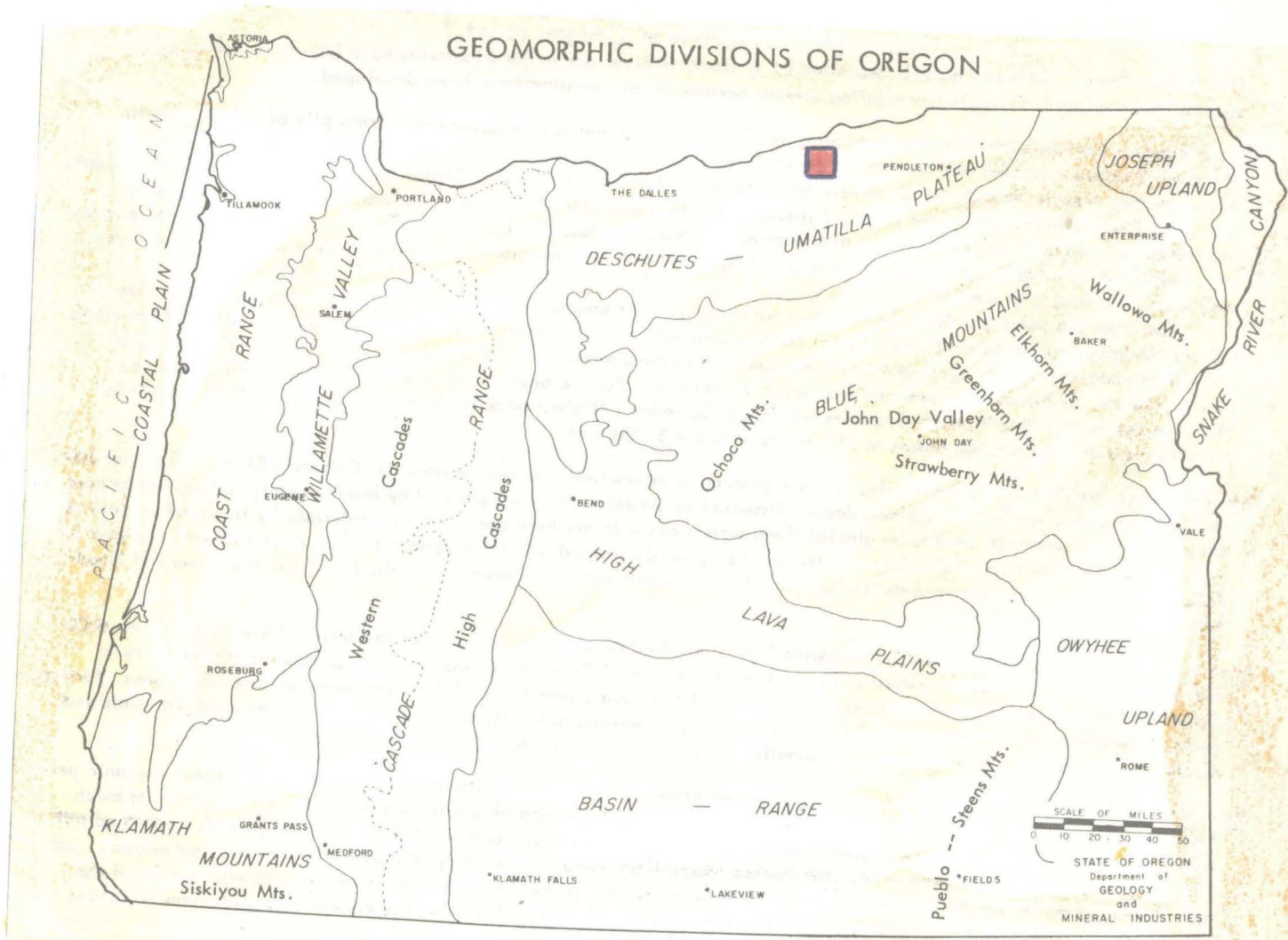
Figure 1. Township-Range grid of Boardman area as taken from U. S. Corps of Engineers regional topographic maps, scale 1:250,000.

- LEGEND**
- Red overprint: Bombing and Gunnery Range boundaries.
 - Orange overprint: Approximate location of observed basalt exposures.
 - . 529 Well location and total logged depth.
 - . 141-710 As above except that the first number represents the depth of reported sediment-basalt contact; the second number represents total logged depth.
 - #3 Wells specially numbered are those illustrated on Figure 3.
 - . 609 Wells shown on maps in the Bombing Range headquarters for which no data is available.
 - . Wells shown on maps in the Bombing Range headquarters for which no data is available.
 - GAS** Well locations at which flammable natural gas is reported to have been encountered.



1515
GAS





Modified from Dicken, *Oregon Geography*, 1950.

Fig. 2