

State Department of Geology and Mineral Industries

RECORDED  
FEB 6 1947  
STATE DEPT OF GEOLOGY  
& MINERAL INDS.

702 Woodlark Building  
Portland, Oregon

Report by; N.S. Wagner  
Date exam; 1/30/47

JONES SCOTT COMPANY ( Sand and Gravel )

Unclassified district  
Umatilla County

Pits at ---- Umatilla, Oregon  
Sand, Oregon  
Office at -- 10 N 3rd Street  
Walla Walla, Washington

Card made  
J.S.A.

Umatilla Pit

Location; T 5 N, R 28 E, about S 22, or about  $\frac{1}{2}$  mile east of Umatilla and to the east of U.S. highway 30 a couple hundred yards from the junction of that highway with U.S. highway 730.

General; This is the site of the companys main pit which was reportedly opened up as a wheelbarrow operation by Mr.Scott fifty years or so ago. Today two long conveyor belts are required to deliver material from the pit to the plant which is serviced with a railroad spur.

The ma terial dug here consists of sand and well washed gravel which is probably of Quaternary Age and which comprises a large hill at the site of the plant. The formation is widespread in the area.

Gravel is excavated and moved by dragline to a conveyor which transports it from the active pit to a primary crusher set up in the central portion of the main pit. The second conveyor relays the primary crusher discharge from the main pit to the plant where secondary crushing and final screening is accomplished.

Various grades of sand and crushed rock from  $1\frac{1}{2}$  to  $1/4$ " are produced here. Material sold as "pit run" is crushed and sized, but not heavily washed.

Sand Pit

Location T 5 N, R 30 E, S 8. This is at the railroad spur known as "Sand" which is 13 miles east of Umatilla on U.S. highway 730.

General The production at this pit consists of sand exclusively. The material mined is wind transported sand which has been deposited on the flank of and against the face of a low basalt flow which parallels the river at this point. The sand is thus confined to a narrow belt and has accumulated in large amounts only in a few places.

The sand is dug and loaded out directly without washing or screening. Equipment consists of a Barber Green loader in the pit with truck haulage for a distance of a few hundred feet to a ramp and bunkers on a railroad siding.

A 2 to 10 foot overburden of silty sand locally called "blow sand" is bulldozed off.

Although slumping and incessant reworking by the wind has obscured the evidence it is reported that this pit has been worked back to the talus zone along the flanking basalt so that it is necessary to use a bulldozer to assist in the excavating. However, as this pit is only worked occasionally several years supply supply probably exist.

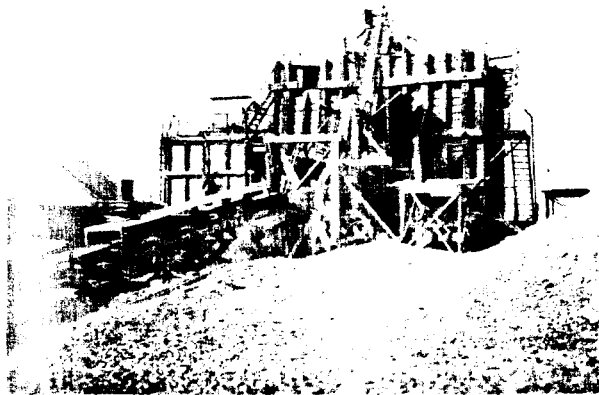
Much of this silty <sup>overburden</sup> sand is sold to the railroad for use in stock cars. *The clean sand is sold as plaster sand,*

John Sweet Co.  
(Sand & Gravel)  
Umatilla

N.S. Wagner



General view of pit and plant



Close-up of plant

CC.  
(gravel)  
Umatilla County



Pit as seen from the top of the plant



Same as above from halfway down conveyor line