

PROPERTY OF UNITED STATES GEOLOGICAL SURVEY

SCALE 1" = 3000'
 1000 0 1000 2000 3000 4000

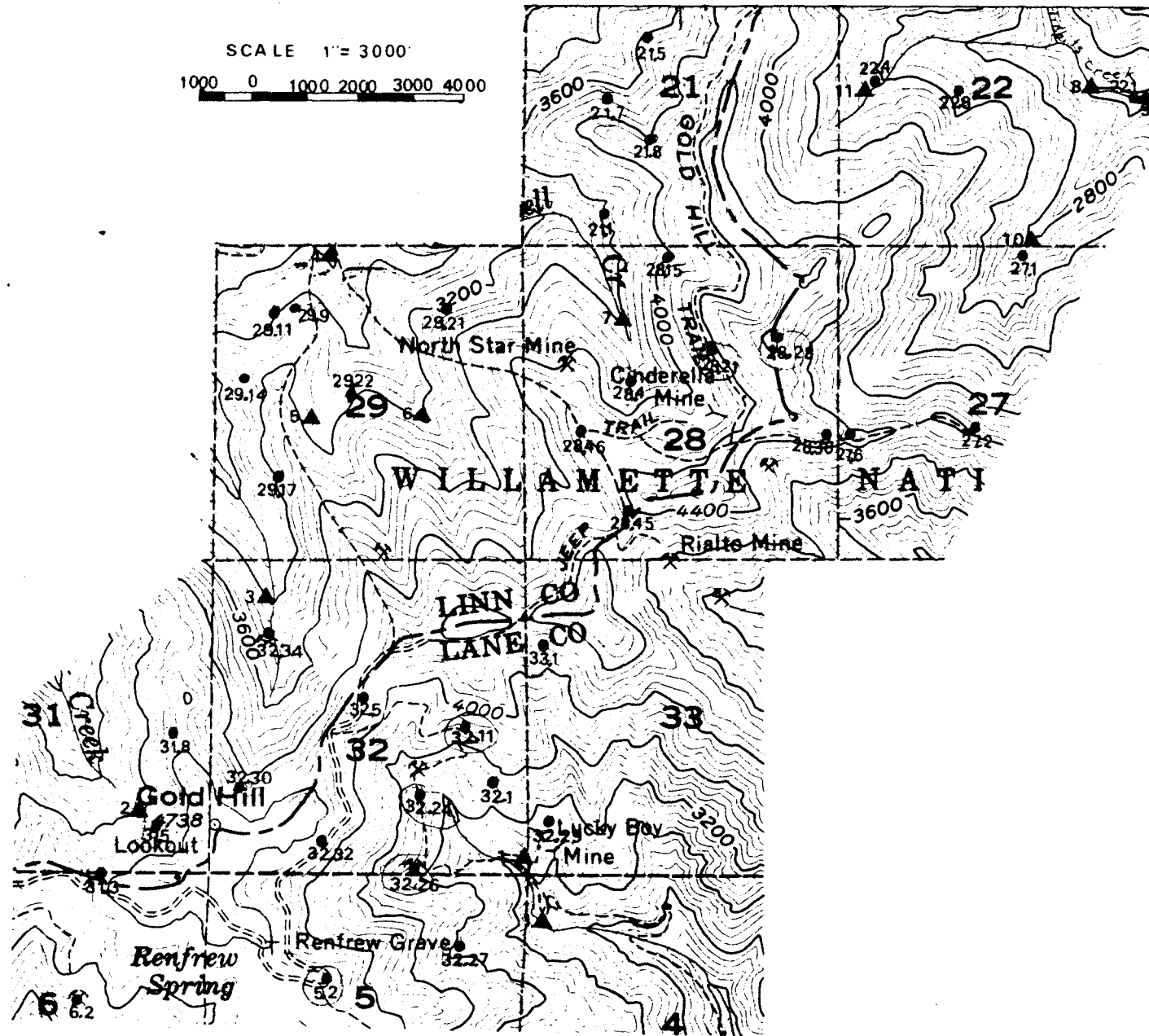


PLATE 2: SAMPLE LOCATIONS

- ROCK SAMPLE
- ▲ STREAM SEDIMENT SAMPLE
- ✕ MINE

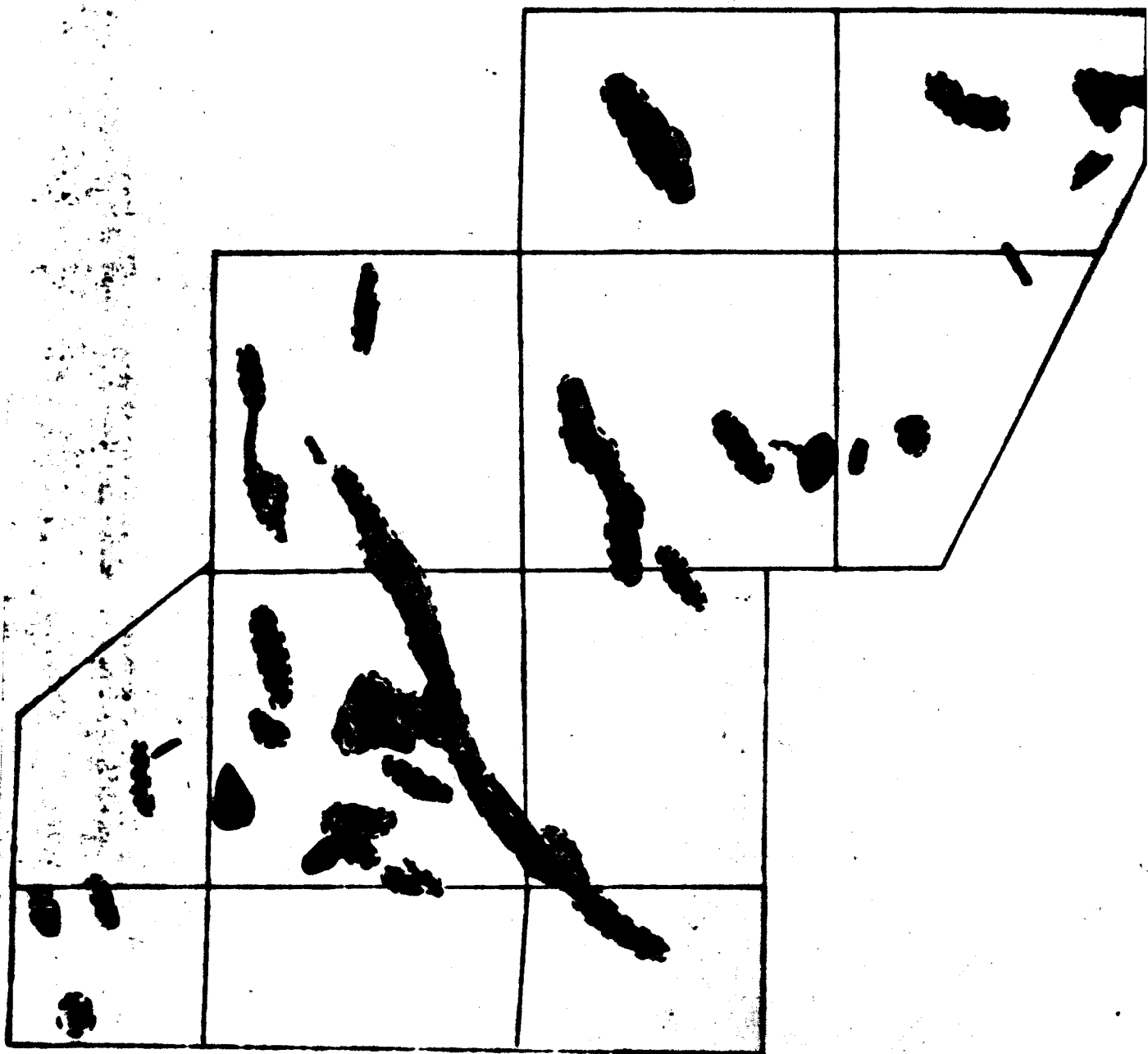


PLATE 3: Location of alteration zones, intrusive rocks, shear zones, and veins.

Alteration zones 

Intrusive rocks 

Shear zones 

Veins 

(in part after Callahan and Buddington, 1950)

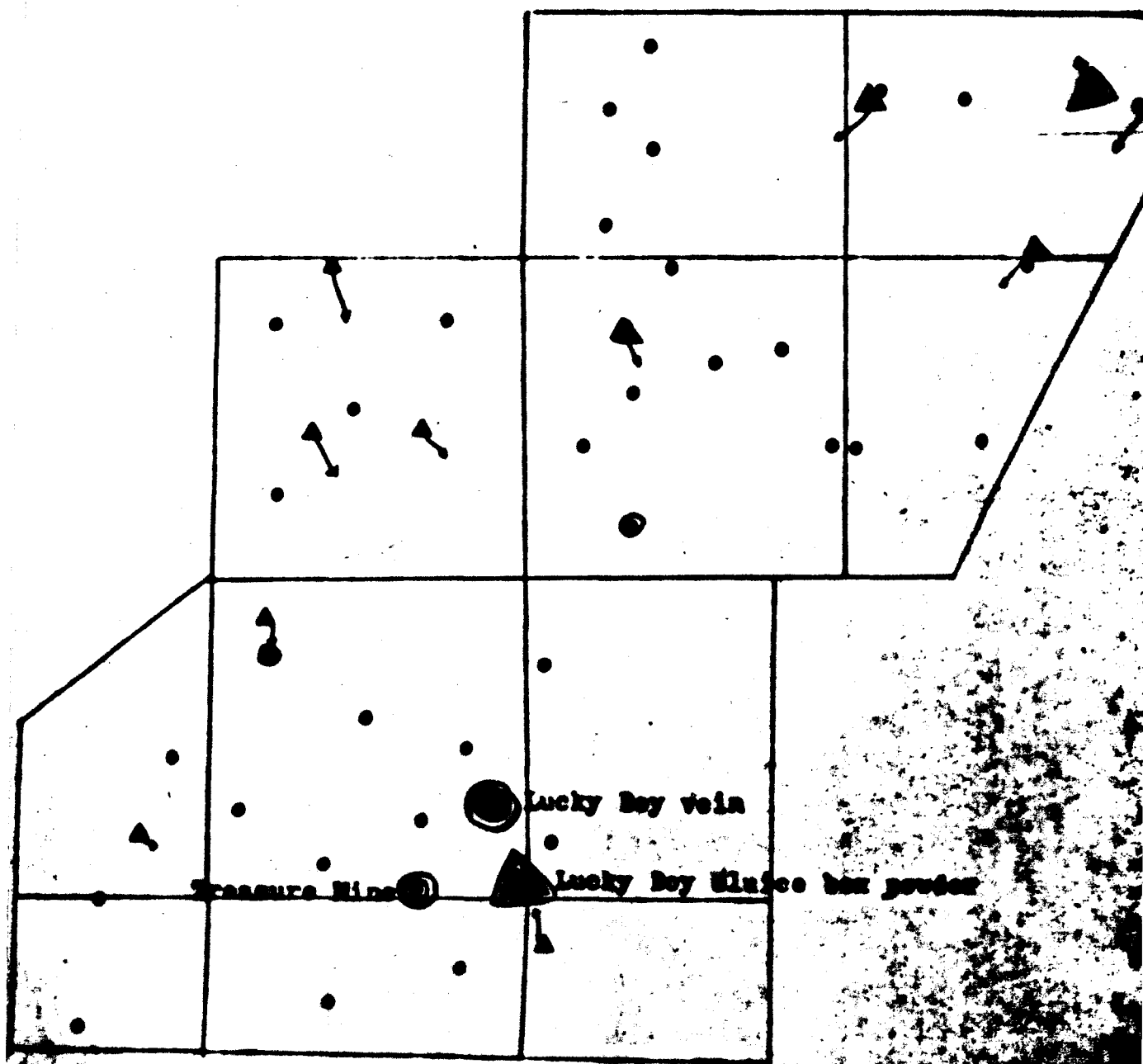
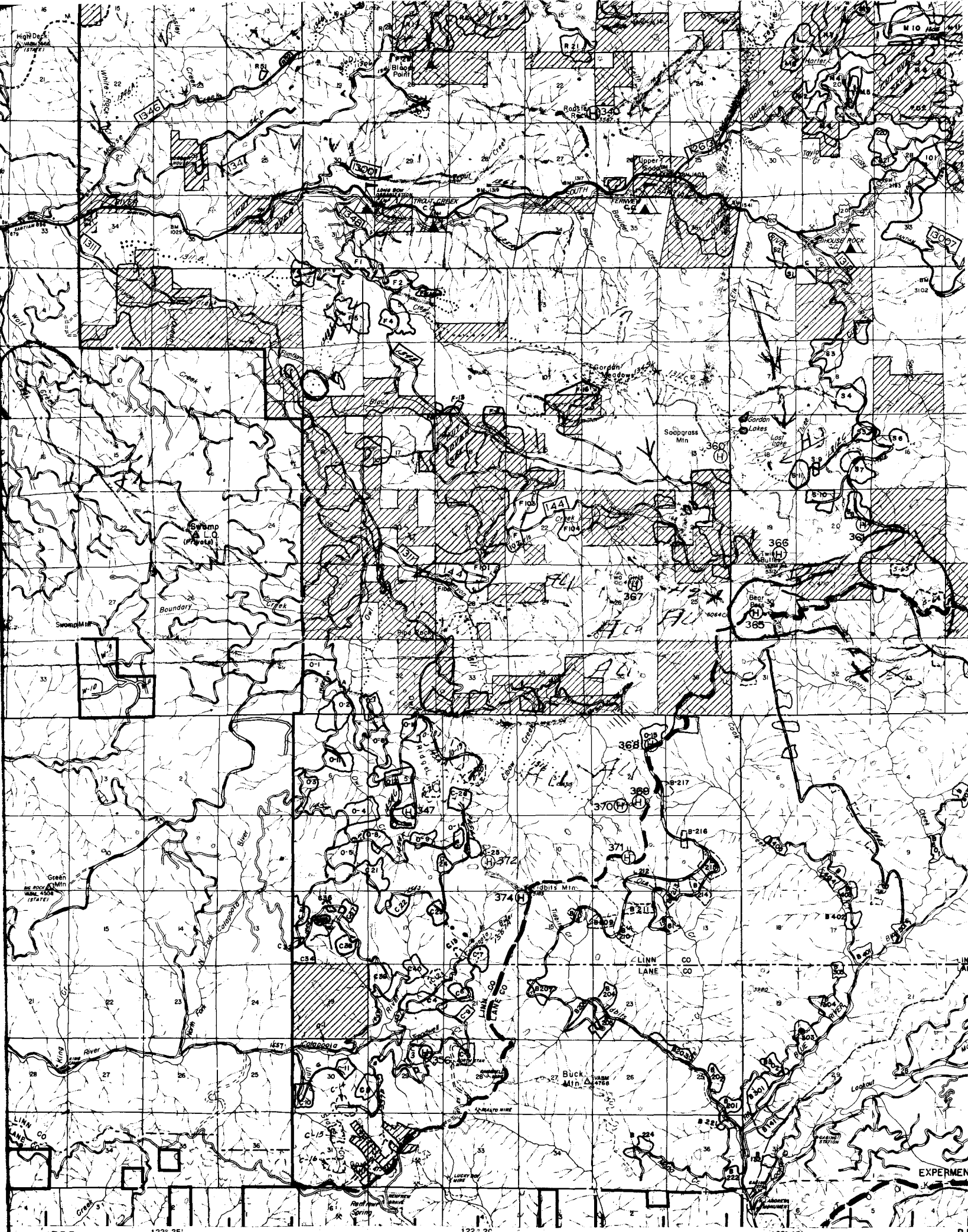


PLATE 4: Anomalous samples of stream sediment and rock.

Stream sediment sample
(arrows point upstream)

Rock chip sample

- Copper
- Molybdenum
- Lead
- Zinc
- Silver



R3E

122° 25'

122° 20'

R4E

122° 15'

EXPERMEN