

Gamma Ray

FILE NO. _____

WELL NAME: **NEWBERRY #1**

FIELD: **NEWBERRY**

COMPANY: **GEO OPERATOR CORPORATION**

DATE: **11-2-85**

LOG NUMBER: **4544**

LOG DATE: **11-2-85**

LOG TIME: **8:18:1**

LOG MODE: **PLAYBACK**

LOG TYPE: **GR (API)**

LOG SCALE: **5000**

LOG UNIT: **TEN (LBS)**

LOG START: **0**

LOG END: **5840**

LOG INTERVAL: **1**

LOG CORRECTION: **0**

LOG OFFSET: **0**

LOG SCALE FACTOR: **1**

LOG UNIT FACTOR: **1**

LOG CORRECTION FACTOR: **1**

LOG OFFSET FACTOR: **1**

LOG SCALE FACTOR: **1**

LOG UNIT FACTOR: **1**

LOG CORRECTION FACTOR: **1**

LOG OFFSET FACTOR: **1**

LOG SCALE FACTOR: **1**

LOG UNIT FACTOR: **1**

IN WORKING INTERPRETATIONS OF LOGS, OUR EMPLOYEES WILL GIVE CUSTOMER THE BEST FIT OF THEIR BEST JUDGMENT, BUT SINCE ALL INTERPRETATIONS ARE BASED ON PRESUMPTIONS, WE CANNOT, AND WE DO NOT WARRANT THE ACCURACY OR CORRECTNESS OF ANY INTERPRETATION. WE SHALL NOT BE LIABLE FOR DAMAGES OR COSTS INCURRED OR SUSTAINED BY THE CUSTOMER RESULTING FROM ANY INTERPRETATION MADE BY ANY OF OUR EMPLOYEES.

DATE	TIME	LOG NUMBER	LOG DATE	LOG TIME	LOG MODE	LOG TYPE	LOG SCALE	LOG UNIT	LOG START	LOG END	LOG INTERVAL	LOG CORRECTION	LOG OFFSET	LOG SCALE FACTOR	LOG UNIT FACTOR	LOG CORRECTION FACTOR	LOG OFFSET FACTOR
11-2-85	8:18:1	4544	11-2-85	8:18:1	PLAYBACK	GR (API)	5000	TEN (LBS)	0	5840	1	0	0	1	1	1	1

Run	Trip	Tool	Serial No.	Series No.	Position
1	1	TEL	74116	1314	FREE
1	1	CR			
1	1	TEP			

REMARKS RUN (1)

EQUIPMENT DATA

Run	Trip	Tool	Serial No.	Series No.	Position
1	1	TEL	74116	1314	FREE
1	1	CR			
1	1	TEP			

*** NONE ***

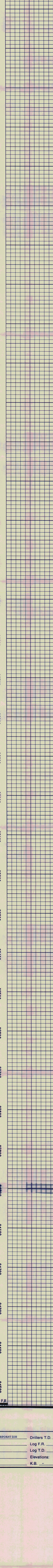
COMPANY: G.E.O. RUN: 1

WELL NAME: N NO.1 TRIP: 1

SERVICE: KC237A FILE: 2 DATE: 11/ 1/85 TIME: 8:18: 1

REVISION: FSYSL REV D007 UER 5 MODE: PLAYBACK

GR (API) 150 5000 TEN (LBS) 0



GR (API) 150 5000 TEN (LBS) 0

Company	GEO OPERATOR CORPORATION	Drillers T.D.	4550'
Well	NEWBERRY #1	Log F.R.	4544'
Field	NEWBERRY	Log T.D.	4546'
County	DESCHUTES	Elevations:	
State	OREGON	K.B.	-
		D.F.	-
		G.L.	5840'