

Dresser Atlas Induction Log

R

FILE NO. _____

COMPANY GEO OPERATOR CORPORATION
WELL NEWBERRY #1
FIELD NEWBERRY
COUNTY DESCHUTES STATE OREGON
LOCATION: 3600' W. & 2758' N. OF S.E. CORNER OF
SEC 25 TWP 22S RGE 12E
DATE 11-2-85
RUN NO ONE
SERVICE ORDER 33975
DEPTH - DRILLER 4550'
DEPTH - LOGGER 4544'
BOTTOM LOGGED INTERVAL 4540'
TOP LOGGED INTERVAL SURE
CASING - DRILLER 3 1/8" @ 1800'
CASING - LOGGER 1788'
BIT SIZE 3.782"
TYPE FLUID IN HOLE WATER
DENSITY AND VISCOSITY -
PH AND FLUID LOSS -
SOURCE OF SAMPLE NA
RIM @ MEAS. TEMP. @ - °F
RIM @ MEAS. TEMP. @ - °F
RIM @ MEAS. TEMP. @ - °F
SOURCE OF RIM AND RMC -
RIM @ BHT -
TIME SINCE CIRC. 6 HRS.
MAX. REC. TEMP. DEG. F. 166
EQUIP. NO. AND LOCATION 6406 SAC.
RECORDED BY MR. DANSART & SWANBERG
WITNESSED BY MR. HINDS

PERMANENT DATUM: GL Elev. 5840'
LOG MEASURED FROM: GL 0 Ft. Above Permanent Datum
DRILLING MEASURED FROM: GL Elev. 5840'

Other Services: BHC/AL GR TEMP CAL FRAC

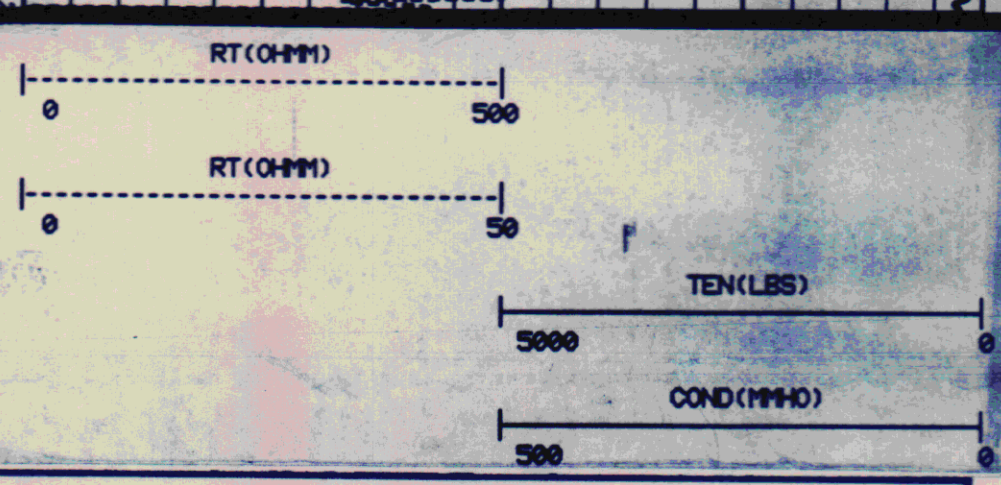
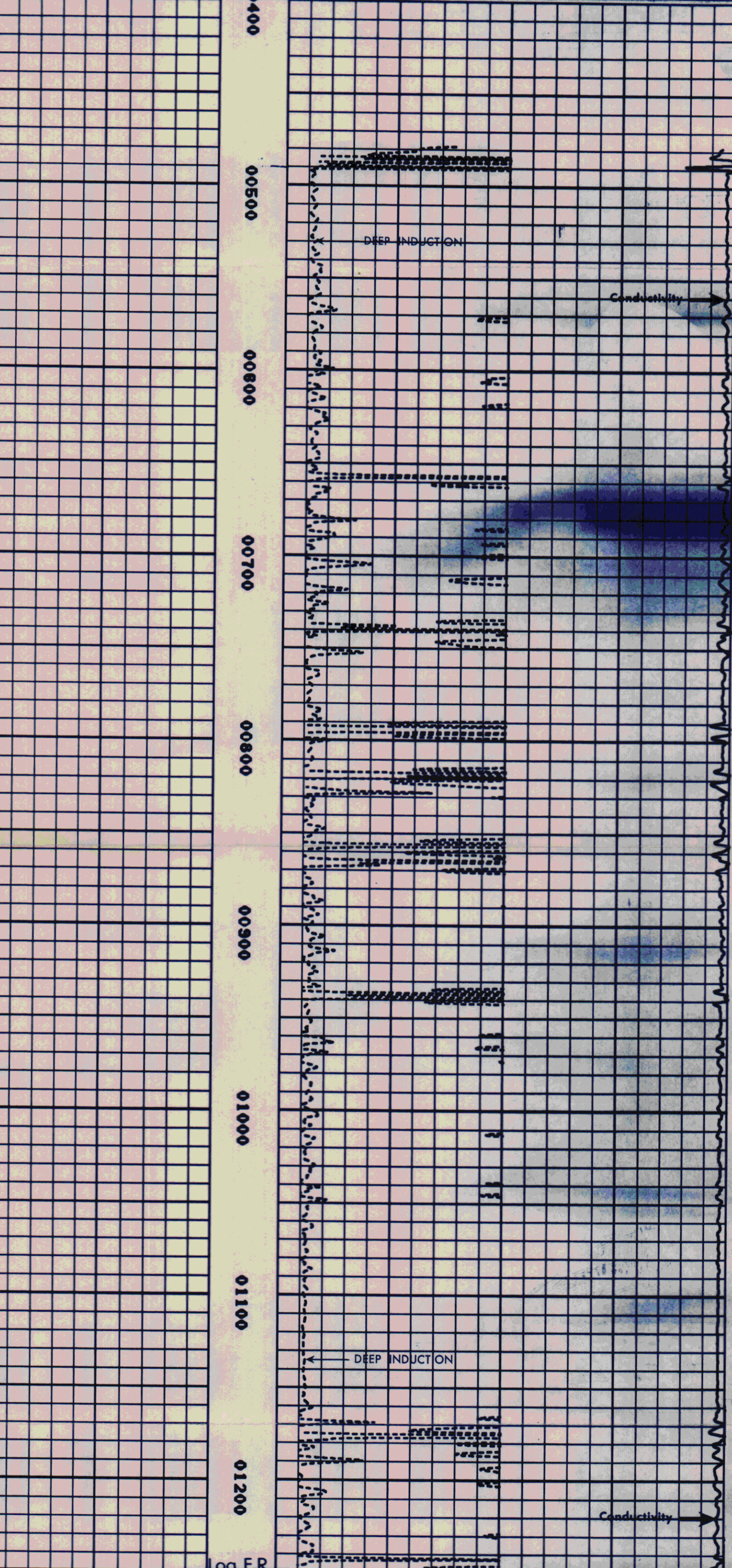
FOLD HERE

In making interpretations of logs our employees will give Customer the benefit of their best judgment, but since all interpretations are opinions based on inferences from electrical or other measurements, we cannot, and we do not guarantee the accuracy or the correctness of any interpretation. We shall not be liable or responsible for any loss, cost, damages, or expenses whatsoever incurred or sustained by the Customer resulting from any interpretation made by any of our employees.

Remarks: 1) INTERNAL BETWEEN 1788' & 1250' WAS NOT LOGGED DUE TO WELL CONDITIONS.
2) RECORDED AFTER 4" TUBING PULLED ABOVE 4.5" CASING SHOE.

EQUIPMENT DATA

RUN	TRIP	TOOL	SERIAL NO.	SERIES NO.	POSITION
2	1	IEL	44294	B11	FREE
2	1	GR	74116	1314	FREE
1	1	CAL			
1	1	TEMP			



Company GEO OPERATOR CORPORATION
Well NEWBERRY #1
Field NEWBERRY
County DESCHUTES
State OREGON

Drillers T.D. 4550'
Log F.R. 1250'
Log T.D. NOT CHECKED
Elevations: K.B. - D.F. - G.L. 5840'