

Caliper Log



COMPANY GEO OPERATOR CORPORATION

WELL #N-3

FIELD MEMBERRY

COUNTY DESCHUTES STATE OREGON

LOCATION: 4100' N. & 500' E. OF S.W. CORNER OF:

SEC. 24 TWP. 20S RGE. 12E

Other Services: CID/CN/GR AC/FRAC NEUTRON

Permanent Datum: GI Elev. 5760'

Log Measured from: GI DF 5760'

Drilling Measured from: GI DF 5760'

Date: 7-28-86

Survey Order: 9NE 1223

Depth - Driller: 4000'

Bottom Logged Interval: 3999'

Top Logged Interval: 1690'

Change - Logger: 3-065 1702'

Bit Size: 2.98" MUD

Type Fluid in Hole: MUD

PH and Fluid Loss: -

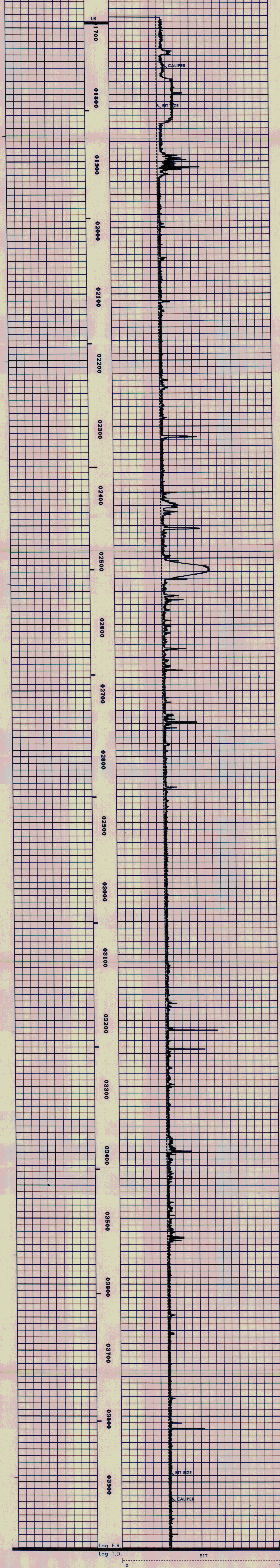
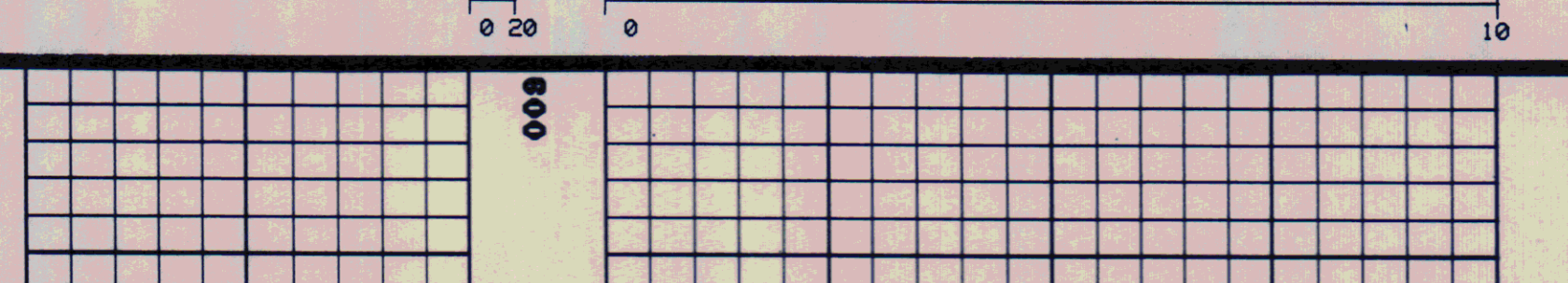
Source of Sample: -

Run @ Mass. Temp.	Rmt @ Mass. Temp.	Rmt @ Mass. Temp.	Source of Sample	Time Since Circ.	Max. Pac. Temp. Deg. F.	Emulc. No. and Location
-	-	-	-	-	6406	SAC.
-	-	-	-	-	6 HRS.	-

Remarks: BIT SIZE ABOVE 1844' IS 3.78"
 BIT SIZE BELOW 1844' IS 2.98"
 MAX. RECORDING OF THERMOMETERS: 128°F.
 128°F.

RUN	TRIP	TOOL	SERIAL NO.	SERIES NO.	POSITION
1	1	CAL	5449	2110	CENT

COMPANY: GEO OPERATOR RUN: 1
 WELL NAME: N-3 TRIP: 1
 SERVICE: KC442A FILE: 5 DATE: 7/28/86 TIME: 23:55:13
 REVISION: FSYSL REV D007 UER 7 MODE: PLAYBACK



Log F.R. Log T.D.

