



# NEUTRON

COMPANY: GBO OPERATOR CORPORATION  
 WELL: #N-3  
 FIELD: NEMBERSBY  
 COUNTY: DESCHUTES STATE: OREGON

LOCATION: 4100' N. & 500' E. OF THE S.W. CORNER OF 7  
 SEC. 24 Twp. 20S Rge. 12E  
 PERMITS: 24  
 DATE: 7-29-86

LOG MEASUREMENT FROM: 0  
 PERMANENT DATUM: 5760'  
 DATE: 7-29-86  
 TOPEX: 4002.3  
 BOTTOM LOGGED INTERVAL: 4000.2'  
 LOGGING INTERVAL: 50' LOGS @ 1102'

Well Size	2.98"
Depth and Viscosity	WATER
Surface of Sample	
Time @ Max Temp	
Time @ Min Temp	
Time Since Circ	16 HRS.
Depth No. and Location	6406 SAC.
Prepared By	W. S. KATZBERG

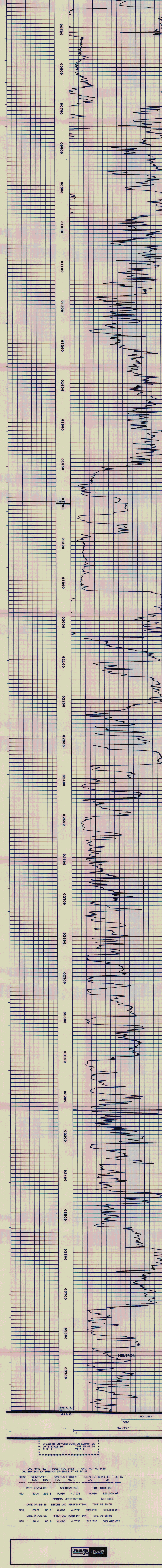
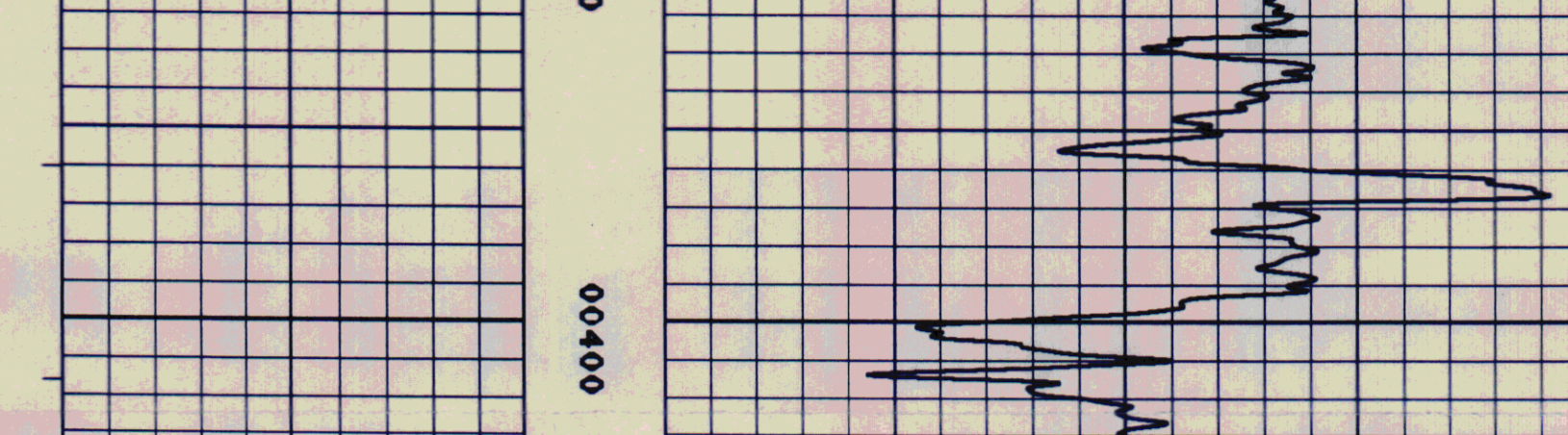
IN MAKING INTERPRETATIONS OF LOGS OUR EMPLOYEES WILL GIVE CONSIDERATION TO THE BEST JUDGMENT, BUT SINCE ALL INTERPRETATIONS ARE OPINIONS BASED ON INFORMATION AVAILABLE TO US, WE DO NOT WARRANT THE ACCURACY OR CORRECTNESS OF ANY INTERPRETATION. WE SHALL NOT BE LIABLE OR RESPONSIBLE FOR ANY LOSS, COST, DAMAGES OR EXPENSES INCURRED BY ANY OTHER PARTY AS A RESULT OF ANY INTERPRETATION MADE BY ANY OF OUR EMPLOYEES.

FOLD HERE

REMARKS RUN ( 1 )  
 MAXIMUM RECORDING THERMOMETERS:  
 130  
 120

EQUIPMENT DATA	RUN NO. 1	RUN NO. 2	RUN NO. 3
Tool Series No	2404		
Serial No	64037		

NEUTRON  
 API UNITS



..... CALIBRATION/VERIFICATION SUMMARIES .....  
 DATE 07/23/86 TIME 09:48:34  
 RUN 1 TRIP 1

DATE	CURVE	COUNTS/SEC.	SCALING FACTORS	ENGINEERING UNITS
		LOW HIGH	ROD. MULT.	LOW HIGH
DATE 07/24/86	CALIBRATION			
NEU		83.4 255.9	0.000 4.7533	0.000 820.000 API
DATE 07/23/86	BEFORE LOG VERIFICATION			
NEU		65.9 66.0	0.000 4.7533	313.228 313.838 API
DATE 07/23/86	AFTER LOG VERIFICATION			
NEU		66.0 65.9	0.000 4.7533	313.716 313.472 API

