



MICRO-SEISMOGRAM LOG-CASED HOLE

COMPANY ORE-IDA FOODS, INC. RECEIVED PLO
 WELL "ORE-IDA" NO. 1 MAY 27 1980
 COUNTY MALHEUR STATE OREGON
 FIELD ONTARIO

COMPANY ORE-IDA FOODS, INC.
 WELL "ORE-IDA" NO. 1
 FIELD ONTARIO STATE OREGON
 COUNTY MALHEUR
 LOCATION NORTHEAST QUARTER CORNER
 Sec. 3 Twp. 18S. Rge. 47E
 Log Measured From: KB
 Drilling Measured From: KB
 Run No. 01E
 Date & Time Survey: 11-9-79 2:00 AM
 Type Cementing Operation: PRIMARY
 Depth: 10053
 Logged Interval: 9 5/8 @ 8198 to 6800 @ 8193

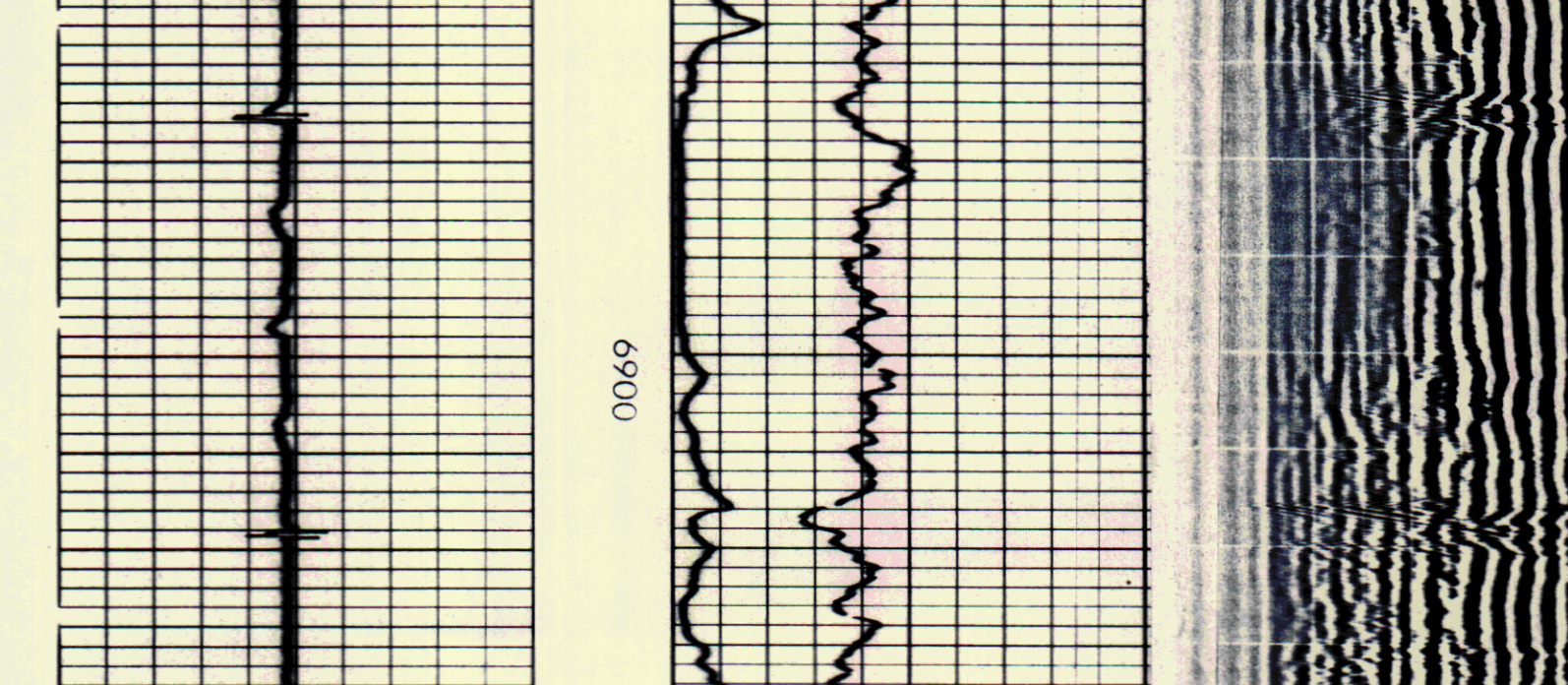
Permanent Datum: GL Elev. N/A
 Log Measured From: KB Elev. N/A
 Drilling Measured From: KB Elev. N/A
 Run No. 01E
 Date & Time Survey: 11-9-79 2:00 AM
 Type Cementing Operation: PRIMARY
 Depth: 10053
 Logged Interval: 9 5/8 @ 8198 to 6800 @ 8193
 Casing Driller: N/A
 Squeeze Depth: N/A
 Amount & Type Cement: N/A
 Type of Plug: N/A
 Filling Material: FILL
 Salinity ppm Cl: N/A
 Weight by gal: 8.4
 Approx. Logged Cem. Top: 7350
 Calculated Cement Top: N/A @ 260
 Max. Hole Temperature: 260 F @ SHOE @ 2100 AM
 Spans Recorded: 4
 Equipment-Location: 8586 WDLND
 Recorded by: DOVE
 Witnessed by: GARDNER

BORE HOLE RECORD				CASING RECORD			
Bit Size	From	To	Csg. Size	Wl.	From	To	Centralized Interval
N/A	0	925	13 3/8		0	925	
12 1/4	925	8123	9 5/8		0	8123	Scratched Interval
8 1/2	8123	10054					Open Performances

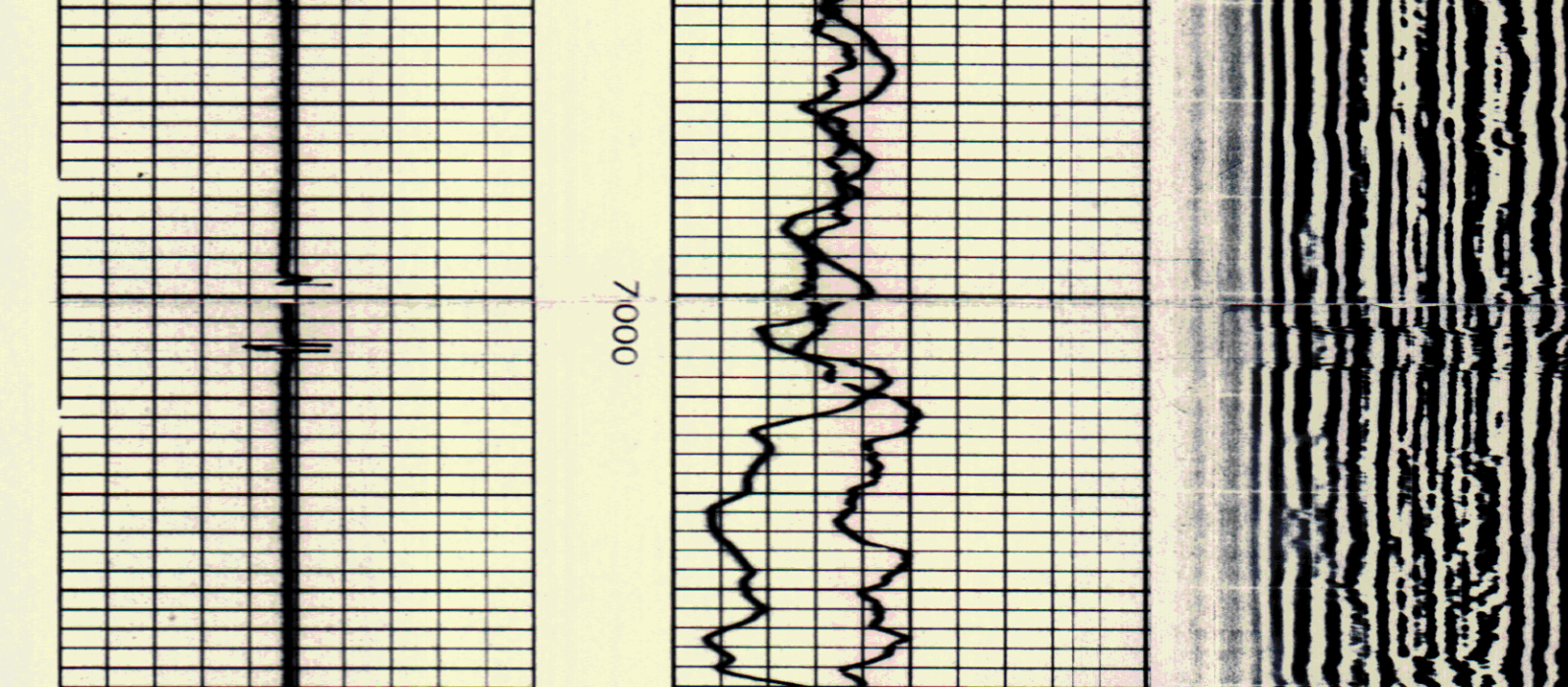
Service Ticket No. 048977 Remarks

Welex does not guarantee the accuracy of any interpretation of log data, conversion of log data to physical rock parameters, or recommendations which may be given by Welex personnel or which may appear on the log or in any other form. Any user of such data, interpretations, conversions, or recommendations agrees that Welex is not responsible, except where due to gross negligence or willful misconduct, for any loss, damages, or expenses resulting from the use thereof.

COLLAR LOG



COLLAR LOG



ORE-IDA FOODS, INCORPORATED
 "ORE-IDA" NO. 1
 ONTARIO
 MALHEUR COUNTY, CALIFORNIA

T.D. LOGGED 8198
 T.D. DRILLER 10054
 T.D. WELEX 10053