



TEMPERATURE LOG

2" 100'

COMPANY: ORE-IDA FOOD INCORPORATED
 WELL: "ORE-IDA" NO. 1
 FIELD: ONTARIO
 COUNTY: MALHEUR
 STATE: OREGON
 Location: NORTHEAST QUARTER CORNER
 DATE: MAY 27 1980
 Sec: 3 Twp: 18S Rgn: 47E
 Perm. Datum: G.L. Elev: N/A
 Log Measured From: KB 24ft Above Perm Datum
 Drilling Measured From: KB G.L. N/A

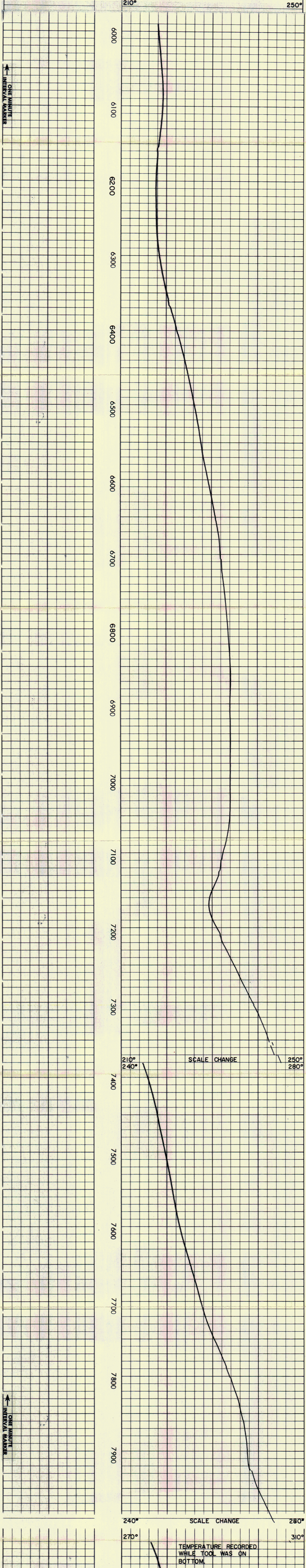
Date	Time	Depth	Temp	Tool	Run No.	Temp	Tool	Run No.	Temp
10-1-79	10-1-79	10-2-79	10-2-79	ONE	ONE	TEMP 20120	CENT.	ONE	TEMP 20120
FIVE	SIX	SEVEN	SEVEN	TWO	TWO	TEMP 20120	CENT.	THREE	TEMP 20120
7960	7960	7960	7960	THREE	THREE	TEMP 20120	CENT.	FOUR	TEMP 20120
7958	7958	7958	7958	FOUR	FOUR	TEMP 20120	CENT.	FIVE	TEMP 20120
7958	7958	7958	7958	FIVE	FIVE	TEMP 20120	CENT.	SIX	TEMP 20120
7958	7958	7958	7958	SIX	SIX	TEMP 20120	CENT.	SEVEN	TEMP 20120
7958	7958	7958	7958	SEVEN	SEVEN	TEMP 20120	CENT.		

Service Ticket No. 049044 Remarks: CIRCULATION STOPPED AT 2:00 AM 9-18-79.
 Change in Mud Type or Additional Samples: Type Log, Depth, Scale Up Hole, Scale Down Hole
 Density: Dens. Visc. ml
 Source of Sample: Rm @ Meas. Temp. @ F Run No. Tool Type and No. Pad Type Tool Position Other

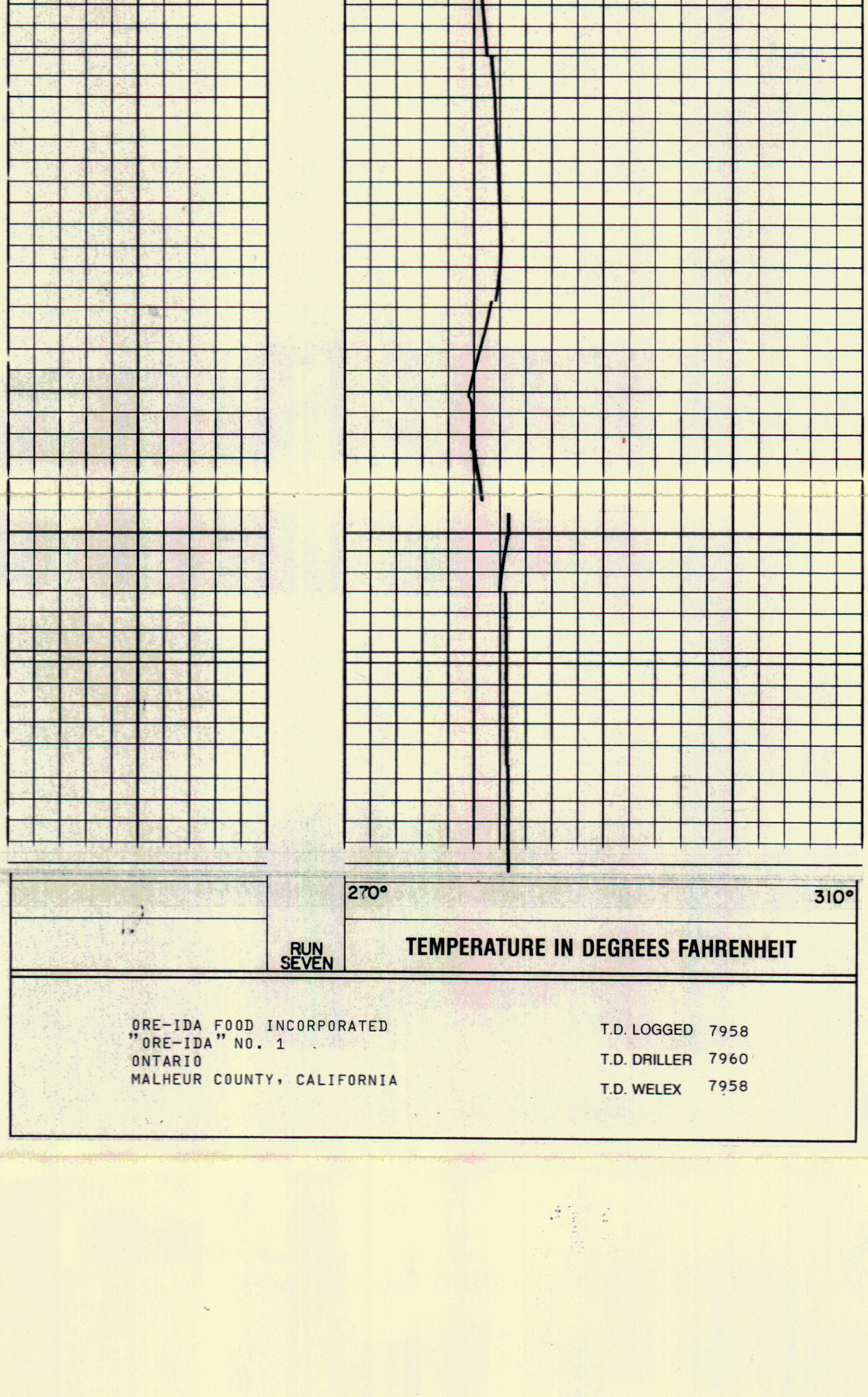
RUN ONE TOOL ON BOTTOM @ 10:30 AM. RUN TWO TOOL ON BOTTOM @ 2:00 AM.
 RUN THREE TOOL ON BOTTOM @ 5:15 PM. RUN FOUR TOOL ON BOTTOM @ 4:30 AM.
 RUN FIVE ON BOTTOM @ 9:30 PM 10-1-79. BHT 300', 286'.
 RUN SIX ON BOTTOM @ 10:30 10-2-79. BHT 316', 318', 332'.
 RUN SEVEN ON BOTTOM @ 3:30 PM 10-2-79. BHT 304', 288', 308'.

WELLEX does not guarantee the accuracy of any interpretation of log data, conversion of log data to physical rock parameters, or recommendations which may be given by WELLEX personnel or which may appear on the log or in any other form. Any user of such data, interpretations, conversions, or recommendations agrees that WELLEX is not responsible, except where due to gross negligence or willful misconduct, for any loss, damage, or expense resulting from the use thereof.

TEMPERATURE IN DEGREES FAHRENHEIT



TEMPERATURE IN DEGREES FAHRENHEIT



ORE-IDA FOOD INCORPORATED T.D. LOGGED 7958
 "ORE-IDA" NO. 1 T.D. DRILLER 7960
 ONTARIO T.D. WELLEX 7958
 MALHEUR COUNTY, CALIFORNIA