



COMPANY: U.S. GEOLOGICAL SURVEY
 WELL: PUCCI No. 1
 FIELD: MT. HOOD
 COUNTY: CLACKAMAS STATE: OREGON
 LOCATION: N/A
 DATE: 10-15-80
 PERMANENT DATUM: G.L.L. Elev. 5350
 LOG MEASURED FROM: G.L.L. Ft. Above Perm Datum
 DATE: 10-15-80
 RUN NO.: 4003
 DRILLER: Welex
 BHT DRILLER: 4001
 CASING: 1.437 @ 6
 CASING: 1.437
 BIT SIZE: 6
 TYPE FLUID IN HOLE: H₂O BASE BENTONITE
 DENS. LVISC.: 8.7 @ 60 ml
 BHT I FLUID LOSS: 10.5 @ 60 ml
 SOURCE OF SAMPLE: CIRCULATED
 R_m @ Meas. Temp.: 7.3 @ 60 °F
 R_{nc} @ Meas. Temp.: 5.75 @ 60 °F
 R_m @ Meas. Temp.: 3.90 @ 60 °F
 R_{nc} @ Meas. Temp.: 3.90 @ 60 °F
 SOURCE R_m: HEASTRED
 R_m @ BHT: 4.38 @ 123 °F
 R_{nc} @ BHT: 2 HOURS
 TIME SINCE CIRC: 123 @ BHT
 EQUIP. I LOCATION: 8586 I WDLID
 VORHEES
 RECORDED BY: ROBISON
 WITNESSED BY:

Service Ticket No. 055251

Change in Mud Type or Additional Samples		Type Log	Depth	SCALE CHANGES
Date	Sample No.			Scale Up Hole
				Scale Down Hole

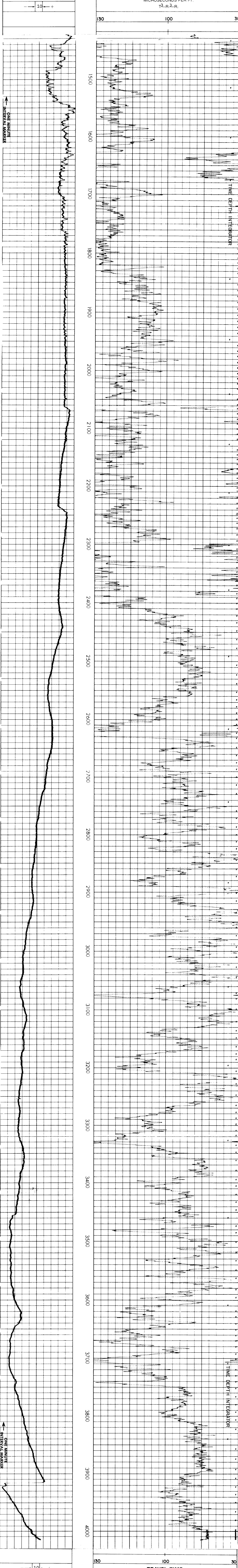
EQUIPMENT DATA	
Run No.	Tool Type and No.
1	AVL

Dens. Visc.	
ph	Fluid Loss
	ml

Source of Sample	
R _m @ Meas. Temp.	R _{nc} @ Meas. Temp.
@	@

Source R _m	
R _m @ BHT	R _{nc}
4.38 @ 123 °F	
3.45 @ 123 °F	
2.23 @ 123 °F	

Welex does not guarantee the accuracy of any interpretation of log data, conversion of log data to physical rock parameters, or recommendations which may be given by Welex personnel or which may appear on the log or in any other form. Any user of such data, interpretations, conversions, or recommendations agrees that Welex is not responsible, except where due to gross negligence or willful misconduct, for any loss, damages, or expenses resulting from the use thereof.



U.S. GEOLOGICAL SURVEY
 PUCCI No. 1
 MT. HOOD
 CLACKAMAS COUNTY, OREGON

T.D. LOGGED 4001
 T.D. DRILLER 4003
 T.D. WELEX 4003
 ELEV: K.B. 5360 G.L. 5350