

JASCO Logging Service
 6207 Highway 60
 Bakerfield, CA
 805-831-5288

Pressure and Borehole
 Temperature Survey

Company: ANADARKO
 Well: 25-22A
 Field: PUEBLO VALLEY
 Region: State/Cty: OREGON
 S USA
 Section Township Range
 Permanent Datum:
 Log Measured From: GL
 Drilling Measured From:
 Date: Nov-03-93
 Depth: 10.8 To: 2475.8
 EL KB: 8
 SF/dl:
 Depth Scale
 1:688

BORE HOLE RECORD
 CASING RECORD

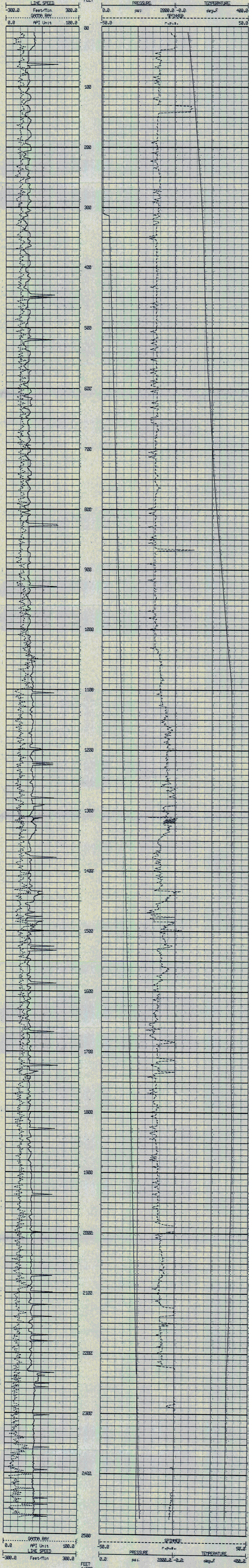
Size	From	To	Size	From	To
			4 1/2"		
			8"		
			10 5/8"		

Recorded by: STEVE THOMPSON
 Witnessed by: BE
 Tool No.: B/
 Remarks:

ANADARKO
 PETROLEUM CORPORATION
 PROPRIETARY DATA

File: C:\SLKLOG\DATA\ANADAR.E.P
 SLS-6.03/2.01

FOLD HERE



ANADARKO
 PETROLEUM CORPORATION
 PROPRIETARY DATA