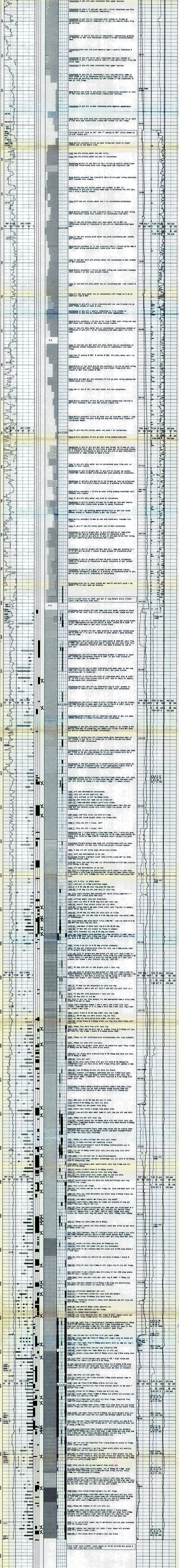


Company ANADARKO PETROLEUM CORPORATION		HOLE SIZE		CASING		LITHOLOGY SYMBOLS	
Well name PUEBLO VALLEY 66-02A		4" 9.625" to 40'		4" 9.625" to 307'			
Field Pueblo Valley		8.5" to 307'		7.0" to 309'			
County Harney		8.1875" to 1003'		4.9" to 1007'			
Location SEC 22, T37E, R33E, W 8 & 9		8.875" to 1051'		4.1" to 1007'			
Elevation 4558' GL		2093'		2093'			
Contractor/Rig Tonto Universal No. 022002		2093'		2093'			
Spud Date 10-10-93		TO Date 11-1-93					
Bottom Hole Location 2376' GL		True Vertical Depth Not Surveyed					
Well Status Shut In for Observation							
Company Representative R.C. Edelman							

LOGGED INTERVAL		LOST CIRCULATION ZONES		SECONDARY MINERALS	
Date Logged 10-10-93 to 11-1-93		No returns below 2073' except during intermittent well flow.		G = Quartz C = Calcite S = Sphalerite E = Epidote Cl = Chlorite	
Depth Logged 5' to 2376' GL		Remarks		BHF Bottom Hole Temp CHT Core Hole Temp LAT Logged after Trip CHT Casing Test	
Air Drilling 5' to 2376' GL		Log prepared based on depth base		Abbreviations	
Temperature Instrument Type T TYPE THERMOCOUPLE		Log prepared based on depth base		BHF Bottom Hole Temp CHT Core Hole Temp LAT Logged after Trip CHT Casing Test	

Scale 1 : 300



ANADARKO PETROLEUM CORPORATION PROPRIETARY DATA