

Scanned

DUAL INDUCTION SFL 2"

CSU

COMPANY: REICHHOLD ENERGY CORPORATION

WELL: "ADAMS" #32-34 REDRILL #1

FIELD: MIST COLUMBIA

STATE: OREGON

LOCATION: 1550 S. & 26 E FROM N 1/4 CORNER OF T1N 7N

SECT: 34

PERMANENT DATUM: GL

ELEV. OF PERM. DATUM: 1325.0 F

LOG MEASURED FROM: KB

DRLG. MEASURED FROM: KB

OTHER SERVICES-
BMC
FDC/CNL/GR
MDI

PROGRAM
TOPE NO:
8 2

SERVICE
ORDER NO:
410787

DATE: 12 SEP 84

RUN NO: 1

DEPTH-DRILLER: 3100.0 F

DEPTH-LOGGER: 3076.0 F

BTM, LOG INTERVAL: 3070.0 F

TOP LOG INTERVAL: 463.0 F

CASING-DRILLER: 412 F

CASING-LOGGER: 412 F

BIT SIZE: 7 7/8

TYPE FLUID IN HOLE: GEL/LIGND
 DENSITY: 9.3 LB/G
 VISCOSITY: 49.0 S
 PH: 8.5
 FLUID LOSS: 5.4 C3
 SOURCE OF SAMPLE: CIRC.
 RM: 3.500 OHMM AT 68.0 DEGF
 RMC: 2.750 OHMM AT 60.0 DEGF
 RMC: 2.920 OHMM AT 60.0 DEGF
 SOURCE RMF/RMC: MEASURED/MEASURED
 RM AT BHT: 3.086 OHMM AT 80.0 DEGF
 RMF AT BHT: 2.117 OHMM AT 80.0 DEGF
 RMC AT BHT: 2.248 OHMM AT 80.0 DEGF

TIME CIRC. STOPPED: 0700
 TIME LOGGER ON BTH: 0925

MAX. REC. TEMP: 80.0 DEGF

LOGGING UNIT NO: 8126
 LOGGING UNIT LOC: SACRAMENTO
 RECORDED BY: ANDERSEN
 WITNESSED BY: THOMAS / MYERS

REMARKS:

EQUIPMENT NUMBERS-

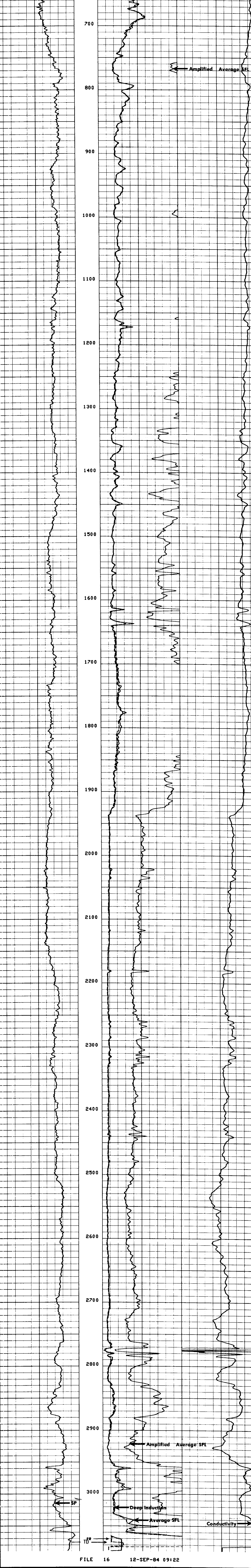
IEM 232 DIS 1425 DIC 1386

ALL INTERPRETATIONS ARE OPINIONS BASED ON INFERENCES FROM ELECTRICAL OR OTHER MEASUREMENTS AND WE CANNOT, AND DO NOT GUARANTEE THE ACCURACY OR CORRECTNESS OF ANY INTERPRETATIONS, AND WE SHALL NOT, EXCEPT IN THE CASE OF GROSS OR WILLFUL NEGLIGENCE ON OUR PART, BE LIABLE OR RESPONSIBLE FOR ANY LOSS, COSTS, DAMAGES OR EXPENSES INCURRED OR SUSTAINED BY ANYONE RESULTING FROM ANY INTERPRETATION MADE BY ANY OF OUR OFFICERS, AGENTS OR EMPLOYEES. THESE INTERPRETATIONS ARE ALSO SUBJECT TO OUR GENERAL TERMS AND CONDITIONS AS SET OUT IN OUR CURRENT PRICE SCHEDULE.

FILE 20 12-SEP-84 10:32
 DATA ACQUIRED 00- -00 00:00

SP (MV)	ILD (OHMM)	SFLA(OHMM)	CILD(MMHQ)
-100.0 0.0	0.0 30.000	0.0 6.0000	0.0 1000.0 0.0

FILE 16 12-SEP-84 10:06



FILE 16 12-SEP-84 09:22

SP (MV)	ILD (OHMM)	SFLA(OHMM)	CILD(MMHQ)
-100.0 0.0	0.0 30.000	0.0 6.0000	0.0 1000.0 0.0

SENSOR MEASURE POINT TO TOOL ZERO

SFL 6.4 FEET	ILD 9.4 FEET
SP 2.5 FEET	ILM 5.7 FEET
TENS 2.5 FEET	SPAR 2.5 FEET

PARAMETERS

NAME	VALUE	UNIT	NAME	VALUE	UNIT
SBR	1.00000	OHMM	DSEC	3.50000	MMHD
BHS	OPEN		MSEC	7.10000	MMHD
SPDR	0100000		BS	7.82500	IN