

COMPANY: REICHHOLD ENERGY CORPORATION

WELL: "ADAMS" #92-34

FIELD: MIST  
COUNTY: COLUMBIA  
STATE: OREGON

LOCATION: 1530 S. & 26 E. FROM  
N 1/4 CORNER T16S 7N

SECT: 3E1 S4  
RPT: SM

PERMANENT DATUM: GL  
ELEV. OF PERM. DATUM: 1535.0  
LOG MEASURED FROM: KB  
DRLG. MEASURED FROM: KB

DATE: 30 AUG 1984

DEPTH-DRILLER: 3284.0  
DEPTH-LOGGER: 3279.0  
BIT LOG INTERVAL: 3244.0  
TOP LOG INTERVAL: 418.0  
CASING-DRILLER: 412.  
CASING-LOGGER: 412.  
CASING: 8 5/8  
BIT SIZE: 7 7/8

OTHER SERVICES-  
DIL-SFL  
HDT

PROGRAM  
TAPE NO:  
SERIAL NO:  
ORDER NO:  
432234

TYPE FLUID IN HOLE: GEL/LIGNO  
DENSITY: 9.3 LB/G  
VISCOSITY: 47.0 S  
PHI: 9.5  
SOURCE LOSS: 5.4 C3  
SOURCE OF SAMPLE: FLOWLINE  
RM: 2.810 DHMM AT 62.0 DEGF  
RMC: 2.720 DHMM AT 62.0 DEGF  
RMC: 2.900 DHMM AT 60.0 DEGF  
SOURCE RMF/RMC: MEASURED/MEASURED  
RM AT BHT: 1.829 DHMM AT 99.0 DEGF  
RMC AT BHT: 1.770 DHMM AT 99.0 DEGF  
RMC AT BHT: 1.833 DHMM AT 99.0 DEGF  
TIME CIRCUIT STOPPED: 2000 8-30  
TIME LOGGER ON BHT: 2300  
MAX. REC. TEMP: 99.0 DEGF  
LOGGING UNIT NO: 8178  
LOGGING UNIT LOC: SACRAMENTO  
RECORDED BY: BENTLEY/ZHALLER  
WITNESSED BY: ALGER

REMARKS:  
CYCLE SKIPS NEAR SURFACE DUE TO UNCONSOLIDATED SANDS.  
SONIC RUN IN COMBINATION WITH DIL.

EQUIPMENT NUMBERS-  
DIS 1422 DIC 47 SLS RC 236 SLC FA 1589  
MCDB 1502 IEM BD 162 SLM DA 443

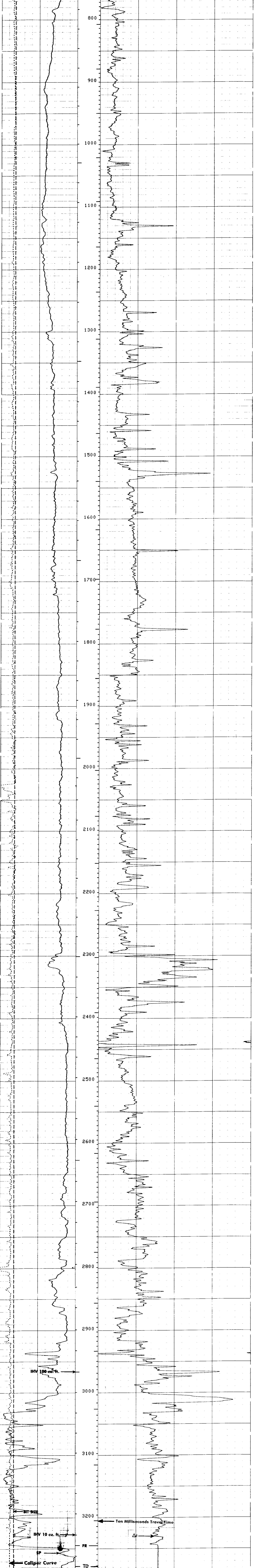
ALL INTERPRETATIONS ARE OPINIONS BASED ON INFERENCES FROM ELECTRICAL OR OTHER MEASUREMENTS AND WE CANNOT, AND DO NOT GUARANTEE THE ACCURACY OR CORRECTNESS OF ANY INTERPRETATIONS, AND WE SHALL NOT, EXCEPT IN THE CASE OF GROSS OR WILLFUL NEGLIGENCE ON OUR PART, BE LIABLE OR RESPONSIBLE FOR ANY LOSS, COSTS, DAMAGES OR EXPENSES INCURRED OR SUSTAINED BY ANYONE RESULTING FROM ANY INTERPRETATION MADE BY ANY OF OUR OFFICERS, AGENTS OR EMPLOYEES. THESE INTERPRETATIONS ARE ALSO SUBJECT TO OUR GENERAL TERMS AND CONDITIONS AS SET OUT IN OUR CURRENT PRICE SCHEDULE.

CHANGED PARAMETERS

NAME	VALUE	UNIT	DEPTH ( F )	NAME	VALUE	UNIT	DEPTH ( F )
SPDR	0.0		2000.0	SPDR	.0750000		900.0

BS (IN)	6.0000	16.000					
CALI (IN)	6.0000	16.000					
SP (MV)	-100.0	0.0		DT (US/F)	150.00	50.000	

FILE 7 31-AUG-84 01:01  
DATA ACQUIRED 31-AUG-84 00:01



FILE 7 31-AUG-84 00:56  
DATA ACQUIRED 30-AUG-84 23:16

BS (IN)	6.0000	16.000					
CALI (IN)	6.0000	16.000					
SP (MV)	-100.0	0.0		DT (US/F)	150.00	50.000	

SENSOR MEASURE POINT TO TOOL ZERO

CBL	37.0	FEET	AMPL	37.0	FEET
TT3	33.3	FEET	TT4	32.3	FEET
TT1	36.0	FEET	TT2	37.0	FEET
CALI	56.1	FEET	SRAT	34.5	FEET
SFL	6.4	FEET	ILD	9.4	FEET
SP	2.5	FEET	ILM	5.7	FEET
TENS	2.5	FEET	SPHR	2.5	FEET
NOIS	28.8	FEET			

PARAMETERS

NAME	VALUE	UNIT	NAME	VALUE	UNIT
NSV1	WF1		DWS	16	
DSIN	5	US	DDEL	200	US
CDTS	189.000		DHCO	512	
DTF	189.000	US/F	DTM	56.0000	US/F
SBR	1.00000	DHMM	DSEC	2.20000	MMHO
FPHI	SPHI		MSEC	4.90000	MMHO
FNUM	.620000		FEXP	2.15000	
BS	7.87500	IN	BXS	OPEN	
SPDR	0.0		DO	0.0	F
PP	NDRM				

TAPE NOT MADE