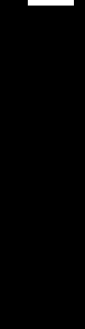


5th number per

DUAL INDUCTION LOG 2"



COMPANY: REICHHOLD ENERGY CORP.
 WELL: ADAMS 34-28
 FIELD: MIST
 COUNTY: COLUMBIA
 STATE: OREGON
 LOCATION: 1087.47' N & 1257.79'E
 SEC: 28 FROM S 1/4 CORNER
 TWP: 7N
 RGE: 5W H24M
 PERMANENT DATUM: GL
 ELEV. OF PERM. DATUM: 1195.6'
 LOG MEASURED FROM: KB
 DRLG. MEASURED FROM: KB
 ELEVATIONS:-
 KBI 1207.0'
 DFI
 GLI 1195.6'
 DATE: 20 SEP 1982
 RUN NO: 1
 DEPTH-DRILLER: 2572.0'
 DEPTH-LOGGER: 2554.0'
 BTM LOG INTERVAL: 2554.0'
 TOP LOG INTERVAL: 516.0'
 CASING-DRILLER: 516'
 CASING-LOGGER: 516'
 CASING: 7"
 BIT SIZE: 6.25"
 DEPTH: 2572'

OTHER SERVICES-
HDT
BHC

TYPE FLUID IN HOLE: LIGNOSULFONATE
 DENSITY: 9.7 LB/G
 VISCOSITY: 48.0 cP
 PHI: 9.0
 FLUID LOSS: 4.1 C3
 SOURCE OF SAMPLE: CIRC
 RM: 1.410 DHMM AT 78.0 DF
 RMF: 1.690 DHMM AT 59.0 DF
 RMC: 1.980 DHMM AT 64.0 DF
 SOURCE RMF/RMC: MEAS/MEAS
 RM AT BHT: 1.152 DHM AT 97.0 DF
 RMC AT BHT: 1.072 DHM AT 97.0 DF
 RMC AT BHT: 1.351 DHM AT 97.0 DF
 TIME CIRC. STOPPED: 1100
 TIME LOGGER ON BHT: 1400
 MAX. REC. TEMP: 97.0 DF
 LOGGING UNIT NO: 8076
 LOGGING UNIT LOC: SACRAMENTO
 RECORDED BY: ANDERSEN
 WITNESSED BY: ALGER

REMARKS:

EQUIPMENT NUMBERS-

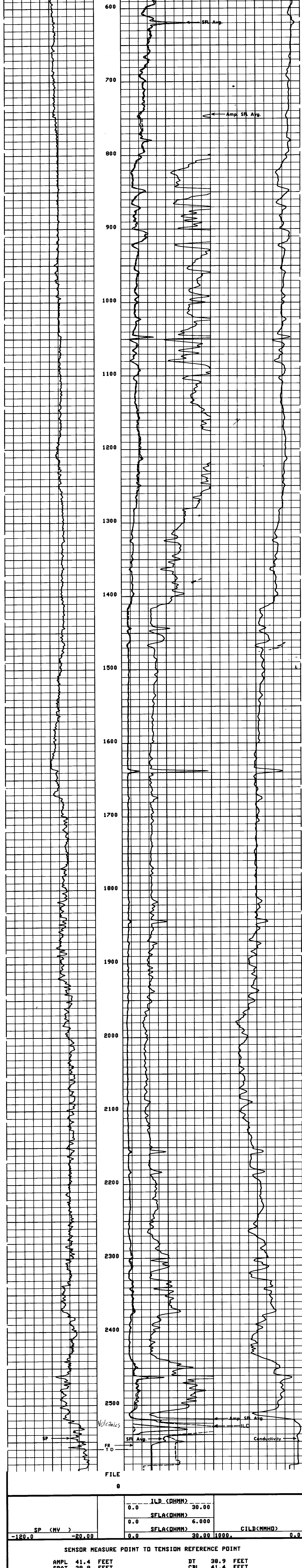
IS 1342 IC 1149 IEM 231 SLM 1281
 SLS 1082 SLC 1265 MCD-B 1502

ALL INTERPRETATIONS ARE OPINIONS BASED ON INFERENCES FROM ELECTRICAL OR OTHER MEASUREMENTS AND WE CANNOT, AND DO NOT GUARANTEE THE ACCURACY OR CORRECTNESS OF ANY INTERPRETATIONS, AND WE SHALL NOT, EXCEPT IN THE CASE OF GROSS OR WILLFUL NEGLIGENCE ON OUR PART, BE LIABLE OR RESPONSIBLE FOR ANY LOSS, COSTS, DAMAGES OR EXPENSES INCURRED OR SUSTAINED BY ANYONE RESULTING FROM ANY INTERPRETATION MADE BY ANY OF OUR OFFICERS, AGENTS OR EMPLOYEES. THESE INTERPRETATIONS ARE ALSO SUBJECT TO OUR GENERAL TERMS AND CONDITIONS AS SET OUT IN OUR CURRENT PRICE SCHEDULE.

FILE

8

ILD (DHMM)	30.00	CILD (MMHO)	0.0
SFLA (DHMM)	6.000		
SFLA (DHMM)	30.00	1000.	0.0
SP (MV)	-120.0	-20.00	



FILE

8

ILD (DHMM)	30.00	CILD (MMHO)	0.0
SFLA (DHMM)	6.000		
SFLA (DHMM)	30.00	1000.	0.0
SP (MV)	-120.0	-20.00	

SENSOR MEASURE POINT TO TENSION REFERENCE POINT

AMPL	41.4 FEET	DT	38.9 FEET
SRAT	38.9 FEET	CBL	41.4 FEET
CALI	29.3 FEET	TT	41.4 FEET
SFL	3.9 FEET	ILD	6.9 FEET
SP	.0 FEET	ILM	3.3 FEET
TENS	.0 FEET	SPAR	.0 FEET
NDIS	33.2 FEET		

PARAMETERS

NAME	VALUE	UNIT	NAME	VALUE	UNIT
DTFS	145.0		DS	6.250	IN
CBS	189.0	US/F	DTH	56.00	US/F
SBR	1.000	DHMM	DSEC	5.700	MMHO
FPHI	SPHI		MSEC	7.200	
DD	100.0		BHS	OPEN	

COMPANY: REICHHOLD ENERGY CORP. SCHL. FR 2554.0'
 WELL: ADAMS 34-28 SCHL. TD 2560.0'
 FIELD: MIST DRLR. TD 2572.0'
 COUNTY: COLUMBIA STATE: OREGON Elev. KB 1207.0'
 DF N/A
 GL 1195.6'