

WELL Adams 34-28
 COMPANY REICHHOLD ENERGY CORP.
 AREA Mist
 LOCATION 1087.47'N & 1257.75'E from
 South 1/2 cor., sec 28; T7N;
 COUNTY, STATE Columbia, Oregon

- W E G E -
WESTERN GEO-ENGINEERS
 "A SERVICE TO THE OIL AND GAS INDUSTRY"

RECEIVED-PTLD
 OCT 4 1982

MUD DATA
 W WEIGHT
 V VISCOSITY
 F FILTRATE
 FC FILTER CAKE
 SD SAND IN %

SALINITY RESISTIVITY
 S SALINITY
 R RESISTIVITY
 RF FILTRATE RESISTIVITY

BIT DATA
 NB NEW BIT
 RRB RERUN BIT

LEGEND
 CB CORE BIT
 WLCB WIRE LINE CB
 OTHER DATA
 TG TRIP GAS
 CG CONNECTION GAS
 C CARBIDE GAS

CIRCULATE RETURNS
 CR NR NO RETURN
 NR NO RETURN
 DST DRILL STEM TEST
 DST INTERVAL
] CORE INTERVAL

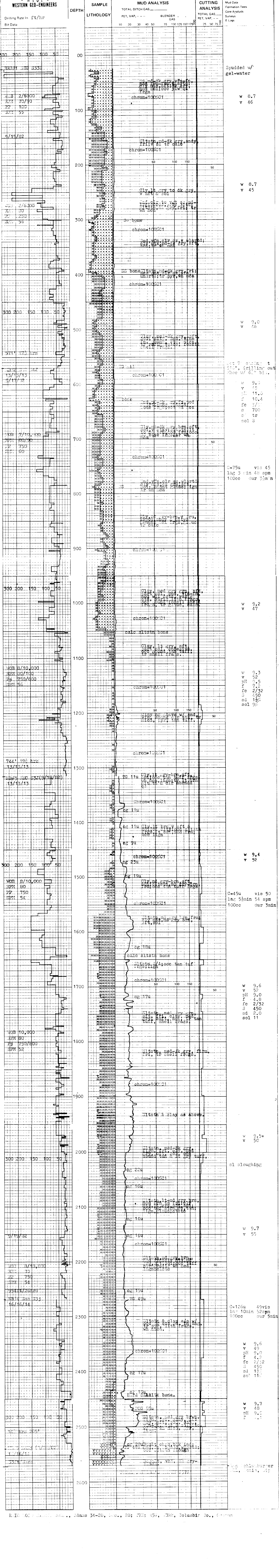
LITHOLOGY SYMBOLS

REMARKS

WELL ELEV. GL. 1195.68'
 KB. 1207.08'
 SALINITY IN ppm Cl
 FILTRATE IN cc/30 MIN.
 GAS TRAP Agitator type
 MUD Lignosulfonate
 (Baroid)
 Taylor Drilling Rig #5

CASING
 7" to 516'
 TO
 TO

DATE 9/14/82 to 9/20/82 DEPTH 25' to 2572' ENGINEERS Thomas Duvall



R. 10, Adams 34-28, Sec., 28; T7N; 45, 1338, Columbia Co., Oregon