

CSU

CONFIDENTIAL

OTHER SERVICES-  
PAC/CHL/GR

COMPANY: RM EXPLORATION  
WELL: ANDERSON 91  
FIELD: MONITOR  
COUNTY: CLATSOP  
STATE: OREGON  
LOCATION: 681.76'E & 579.51'N  
SEC: 29  
RGE: 1E  
PERMANENT DATUM: GL  
ELEV. OF PERM. DATUM: 236.7'  
LONG MEASURED FROM: K3  
ELEVATIONS-  
TAP: 24.2'  
SERVICE  
DRIVER NO: 303402  
DATE: 1 OCT 93  
RUN NO: 1  
DEPTH-DRILLER: 3406.0'  
DEPTH-LOGGERS: 3406.0'  
TOP LOG INTERVAL: 3406.0'  
Casing-Driller: 480'  
Casing-Loggers: 8.425'  
Casing-Logger: 7.825'  
BIT SIZE: 3406'  
BIT DEPTH: 3406'

TYPE FLUID IN MOLE: GEL/LIGND  
DENSITY: 9.3 LB/G  
VISCOSITY: 50.0 S  
PHI: 9.5  
FLUID LOSS: 9.4 C3  
SOURCE OF SAMPLE: FLOMLINE  
RHF: 5.630 DHMM AT 66.0 DEGF  
RHC: 3.470 DHMM AT 56.0 DEGF  
RMC: 3.170 DHMM AT 56.0 DEGF  
SOURCE RHF/RMC: MEASURED/MEASURED  
RHF AT BHT: 3.409 DHMM AT 114. DEGF  
RMC AT BHT: 1.864 DHMM AT 114. DEGF  
RHF AT BHT: 1.650 DHMM AT 114. DEGF  
RMC AT BHT: 1.650 DHMM AT 114. DEGF  
TIME CIRC. STOPPED: 1700 10/2  
TIME LOGGER ON BTH.: 2130 10/2  
MAX. REC. TEMP: 114.0 DEGF  
LOGGING UNIT NO: 8126  
LOGGING UNIT LOC: SACRAMENTO  
RECORDED BY: JDRATKO  
WITNESSED BY: LONG

REMARKS:

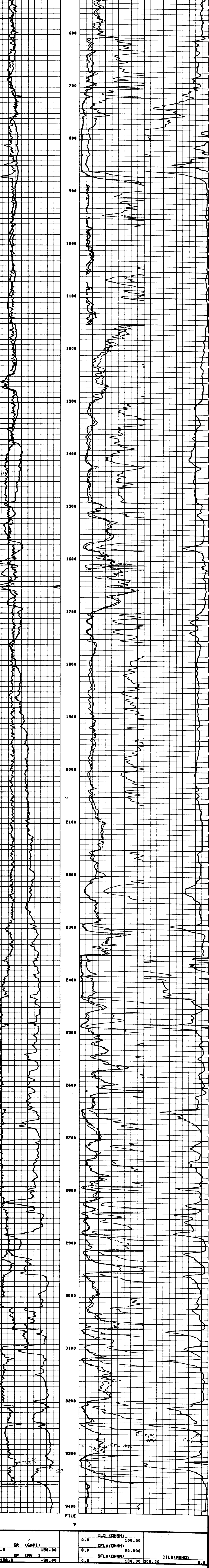
EQUIPMENT NUMBERS-  
BIS 1485 DIC 1306 PGS 679 CNC 2191  
SGC 591 IEM 232 NLM 456

ALL INTERPRETATIONS ARE OPINIONS BASED ON INFERENCES FROM ELECTRICAL OR OTHER MEASUREMENTS AND WE CANNOT AND DO NOT GUARANTEE THE ACCURACY OR CORRECTNESS OF ANY INTERPRETATIONS, AND WE SHALL NOT, EXCEPT IN THE CASE OF GROSS OR WILLFUL NEGLIGENCE ON OUR PART, BE LIABLE OR RESPONSIBLE FOR ANY LOSS, COSTS, DAMAGES OR EXPENSES INCURRED OR SUSTAINED BY ANYONE RESULTING FROM ANY INTERPRETATION MADE BY ANY OF OUR OFFICERS, AGENTS OR EMPLOYEES. THESE INTERPRETATIONS ARE ALSO SUBJECT TO OUR GENERAL TERMS AND CONDITIONS AS SET OUT IN OUR CURRENT PRICE SCHEDULE.

FILE 9

GR (GAPI)	0.0	150.00	JLD (DHMM)	0.0	100.00
SP (MV)	-120.0	-20.00	SFLA (DHMM)	0.0	20.000
			SFLA (DHMM)	0.0	100.00 300.00
			CILD (MMHO)	0.0	0.0

FILE 9



FILE 9

GR (GAPI)	0.0	150.00	JLD (DHMM)	0.0	100.00
SP (MV)	-120.0	-20.00	SFLA (DHMM)	0.0	20.000
			SFLA (DHMM)	0.0	100.00 300.00
			CILD (MMHO)	0.0	0.0

SENSOR MEASURE POINT TO TENSION REFERENCE POINT

MCML 44.4 FEET	GR 52.9 FEET
FFDC 29.1 FEET	FCML 44.4 FEET
CALI 29.1 FEET	MFDC 29.1 FEET
SFL 3.9 FEET	ILD 6.9 FEET
SP .0 FEET	ILM 3.3 FEET
TENS .0 FEET	SPAR .0 FEET
NRAT 44.4 FEET	

PARAMETERS

NAME	VALUE	UNIT	NAME	VALUE	UNIT
PSNR	2.2790		BS	7.8750	IN
NATR	LINE		HC	CALI	44.4
HDEF	2.7100	G/C3	FD	1.00000	G/C3
BWF	MATE		FDC	ALLO	
SRF	1.00000	DHMM	DSEC	3.90000	MMHO
BHS	OPEN		HSEC	6.20000	MMHO
PI	HDRH		DO	0.0	F

TAPE NOT MADE