

COMPANY: RH EXPLORATION

WELL: ANDERSON #1

FIELD: MONITOR

COUNTY: CLACKAMAS

STATE: OREGON

LOCATION: 681.76 E & 579.51 N

SEC: E9 FROM SW CORN OF TWP 5 S

RGE: 1E

PERMITS: PERM. DATUM: 236.7'

ELEV. MEASURED FROM MEAS. PERM. DATUM: 248.4'

DRG. MEASURED FROM: 236.7'

DATE: 2 OCT 83

RUN NO: 1

DEPTH-DRILLER: 3406.0'

DEPTH-LOGGER: 3406.0'

BTM LOG INTERVAL: 3375.0'

TDR LOG INTERVAL: 420.0'

CASING-DRILLER: 420'

CASING-LOGGER: 420'

BIT SIZE: 7.875

BIT DEPTH: 3406'

OTHER SERVICES-
DIL

PROGRAM
TAPE NO:
SERVIC:
DRGR NO:
363402

TYPE FLUID IN HOLE: GEL/LIGNO
 DENSITY: 9.3 LB/G
 VISCOSITY: 50.0 S
 PH: 9.5
 FLUID LOSS: 9.4 CS
 SOURCE OF SAMPLE: FLOWLINE
 RMF: 3.630 DHMM AT 68.0 DEGF
 RMC: 3.470 DHMM AT 58.0 DEGF
 SOURCE RMF/RMC: 3.170 DHMM AT 56.0 DEGF
 MEASURED/MEASURED
 RM AT BHT: 3.489 DHMM AT 114. DEGF
 RMC AT BHT: 1.864 DHMM AT 114. DEGF
 1.650 DHMM AT 114. DEGF

TIME CIRC. STOPPED: 1700 10/2
 TIME LOGGER ON BTM.: 2130 10/2

MAX. REC. TEMP: 114.0 DEGF

LOGGING UNIT NO: 8126
 RECORDED BY: SACRAMENTO
 WITNESSED BY: BORATKO
 LONG

REMARKS:

EQUIPMENT NUMBERS-

| | | | |
|----------|----------|---------|----------|
| DIS 1425 | DIC 1386 | PGS 679 | CNC 2191 |
| SGC 591 | IEM 232 | NLM 456 | |

ALL INTERPRETATIONS ARE OPINIONS BASED ON INFERENCES FROM ELECTRICAL OR OTHER MEASUREMENTS AND WE CANNOT, AND DO NOT GUARANTEE THE ACCURACY OR CORRECTNESS OF ANY INTERPRETATIONS, AND WE SHALL NOT, EXCEPT IN THE CASE OF GROSS OR WILLFUL NEGLIGENCE ON OUR PART, BE LIABLE OR RESPONSIBLE FOR ANY LOSS, COSTS, DAMAGES OR EXPENSES INCURRED OR SUSTAINED BY ANYONE RESULTING FROM ANY INTERPRETATION MADE BY ANY OF OUR OFFICERS, AGENTS OR EMPLOYEES. THESE INTERPRETATIONS ARE ALSO SUBJECT TO OUR GENERAL TERMS AND CONDITIONS AS SET OUT IN OUR CURRENT PRICE SCHEDULE.

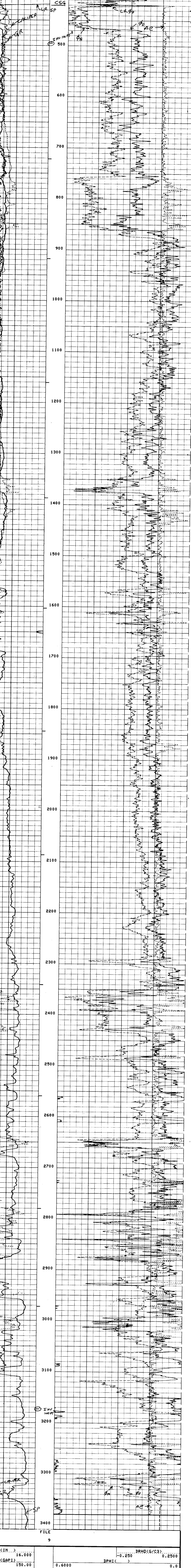
FILE

9

| | | | | | |
|------------|--------|---------|------------|--------|--------|
| CALIC(IN) | 6.0000 | 16.0000 | DRHO(G/C3) | -0.250 | 0.2500 |
| GR (GAPI) | 0.0 | 150.00 | DPHI() | 0.6000 | 0.0 |
| SP (MV) | -130.0 | -30.00 | NPHI() | 0.6000 | 0.0 |

FILE

9



FILE

9

| | | | | | |
|------------|--------|---------|------------|--------|--------|
| CALIC(IN) | 6.0000 | 16.0000 | DRHO(G/C3) | -0.250 | 0.2500 |
| GR (GAPI) | 0.0 | 150.00 | DPHI() | 0.6000 | 0.0 |
| SP (MV) | -130.0 | -30.00 | NPHI() | 0.6000 | 0.0 |

SENSOR MEASURE POINT TO TENSION REFERENCE POINT

| | |
|----------------|-------------------|
| NCNL 44.4 FEET | GR 52.9 FEET |
| FCDC 29.1 FEET | HC CALI 44.4 FEET |
| CALI 29.1 FEET | NFDC 29.1 FEET |
| SPL 3.9 FEET | ILD 6.9 FEET |
| SP 0 FEET | ILM 3.3 FEET |
| TENS 0 FEET | SPAR 0 FEET |
| NRAT 44.4 FEET | |

PARAMETERS

| | | | | | |
|-----------|---------|------|------|---------|------|
| NAME | VALUE | UNIT | NAME | VALUE | UNIT |
| PSNR | 2.27900 | | BS | 7.87500 | IN |
| MATR LINE | | | HC | CALI | |
| WDEN | 2.71000 | G/C3 | FD | 1.00000 | G/C3 |
| BHF | HATE | | FBCC | ALLD | |
| SBR | 1.00000 | DHMM | DSEC | 3.30000 | MHMD |
| BHS | OPEN | | MSEC | 20000 | F |
| PP | NDRM | | DD | 0.0 | |

TAPE NOT MADE