



DUAL INDUCTION LATEROLOG

1" = 100'

| | | | | |
|---|----------------------------|----------------------------|----------------------------|----------------------------|
| COMPANY | WELL | FIELD | COUNTY | STATE |
| PERMANENT DATUM | LOG MEASURED FROM | DILLING MEASURED FROM | DATE | |
| Run No. | Depth - Driller | Depth - Logger | Btm Log Inter. | Top Log Inter. |
| Casing - Driller | Casing - Logger | Bit Size | Type Fluid in Hole | Dens. Visc. |
| Source of Sample | pH Fluid Loss | Source of Sample | R _w @ Meas Temp | R _w @ Meas Temp |
| R _w @ Meas Temp | R _w @ Meas Temp | R _w @ Meas Temp | R _w @ Meas Temp | R _w @ Meas Temp |
| Source R _w / R _{ms} | R _w @ BHT | Time Since Circ | Time On Bottom | Max Rec. Temp |
| Equip. Location | Recorded By | Revised By | Checked By | Released By |

| | | | | |
|---|----------------------------|----------------------------|----------------------------|----------------------------|
| COMPANY | WELL | FIELD | COUNTY | STATE |
| PERMANENT DATUM | LOG MEASURED FROM | DILLING MEASURED FROM | DATE | |
| Run No. | Depth - Driller | Depth - Logger | Btm Log Inter. | Top Log Inter. |
| Casing - Driller | Casing - Logger | Bit Size | Type Fluid in Hole | Dens. Visc. |
| Source of Sample | pH Fluid Loss | Source of Sample | R _w @ Meas Temp | R _w @ Meas Temp |
| R _w @ Meas Temp | R _w @ Meas Temp | R _w @ Meas Temp | R _w @ Meas Temp | R _w @ Meas Temp |
| Source R _w / R _{ms} | R _w @ BHT | Time Since Circ | Time On Bottom | Max Rec. Temp |
| Equip. Location | Recorded By | Revised By | Checked By | Released By |

| | | |
|--|-------------------------------|-----------------|
| Service Ticket No | API Serial No | PGM Version |
| Change in Mud Type or Additional Samples | RESISTIVITY RWA SCALE CHANGES | COMPUTED FROM |
| Date - Sample No | Type Log | Depth |
| Depth - Driller | Scale Up Hole | Scale Down Hole |
| Type Fluid in Hole | | |

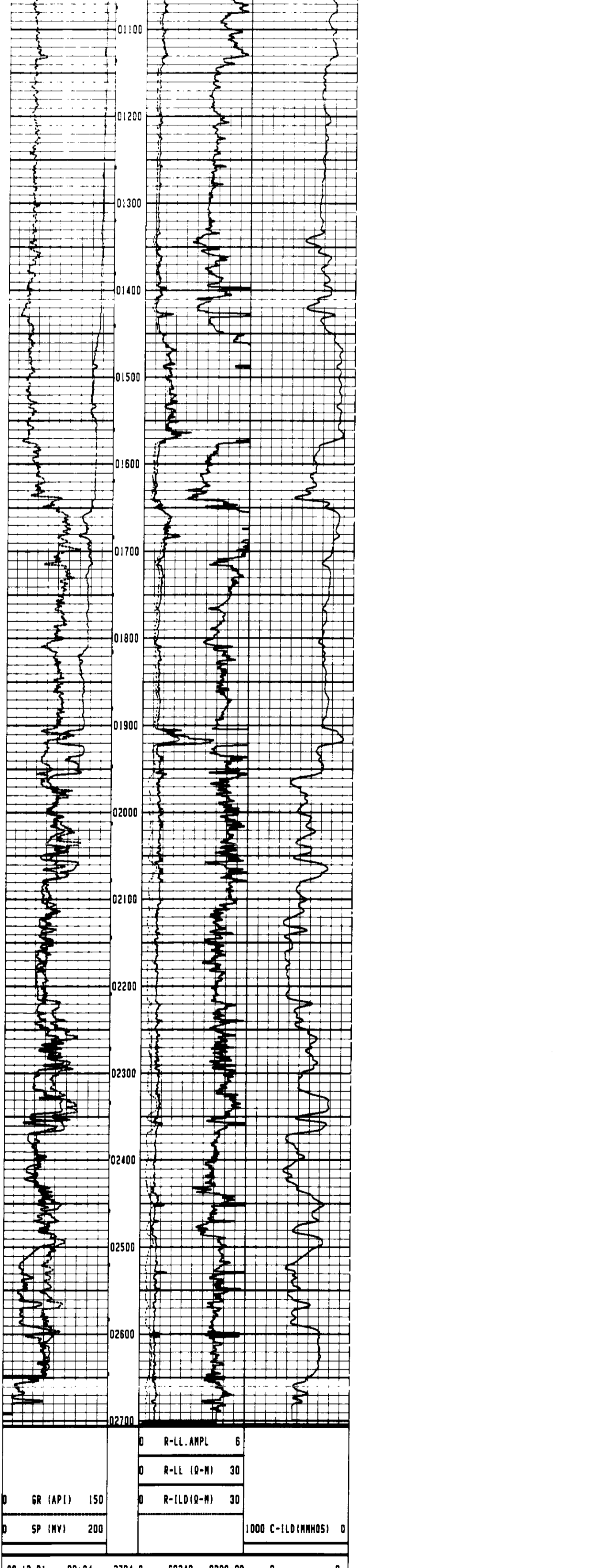
| | | | |
|---|------------|------|---------|
| Dens | Visc | | |
| ph | Fluid Loss | ml | |
| Source of Sample | | | |
| R _w @ Meas Temp | @ °F | @ °F | Run No. |
| R _w @ Meas Temp | @ °F | @ °F | ONE |
| R _w @ Meas Temp | @ °F | @ °F | |
| Source R _w / R _{ms} | | | |
| R _w @ BHT | @ °F | @ °F | |
| R _w BHT | @ °F | @ °F | |
| R _w BHT | @ °F | @ °F | |

| | | | |
|--------------------|--------------|-------------|-------------|
| EQUIPMENT DATA | | | |
| GAMMA | ACOUSTIC | DENSITY | NEUTRON |
| Run No | Run No | Run No | Run No |
| Serial No | Serial No | Serial No | Serial No |
| Model No | Model No | Model No | Model No |
| Diameter | No. of Cent. | Diameter | Diameter |
| Detector Model No | Spacing | Log Type | Log Type |
| Type | Source Type | Source Type | Source Type |
| Length | Serial No | Serial No | Serial No |
| Distance to Source | FWDA | Strength | Strength |

| | | | | | | | | | | | |
|--------------|--------|----|-------|---|----------|---|---------|---|---------|---|--------|
| LOGGING DATA | | | | | | | | | | | |
| GENERAL | | | GAMMA | | ACOUSTIC | | DENSITY | | NEUTRON | | |
| Run No | Depths | | Scale | | Scale | | Scale | | Scale | | |
| ONE | From | To | L | R | L | R | L | R | L | R | Matrix |

| | | | | |
|-----------------------|-----|--------------------|-------------------|------------------|
| a = | m = | Δt _{sp} = | Δt _l = | ρ _o = |
| REMARKS | | | | |
| CASED HOLE PARAMETERS | | | | |
| From | | | | |
| To | | | | |
| Bit Size | | | | |
| Csg O D | | | | |
| Csg WI | | | | |

Halliburton Logging Services, Inc. does not guarantee the accuracy of any interpretation of log data, conversion of log data to physical rock parameters, or recommendations which may be given by Halliburton Logging Services, Inc. personnel or which may appear on the log or in any other form. Any user of such data, interpretations, conversions or recommendations agrees that Halliburton Logging Services, Inc. is not responsible, except where due to gross negligence or willful misconduct, for any loss, damages or expenses resulting from the use thereof.



REPEAT SECTION

