



DUAL INDUCTION GUARD LOG

REICHOLD ENERGY CORPORATION
 BAGDANOFF 23-28
 FIELD ST. LOUIS (N. SAL)
 COUNTY MARION STATE ORE.
 COUNTY MARION STATE ORE.
 STATE FEB 84 1982

COMPANY REICHOLD ENERGY CORPORATION
 WELL BAGDANOFF 23-28
 FIELD ST. LOUIS (N. SAL)
 COUNTY MARION STATE ORE.
 COUNTY MARION STATE ORE.
 STATE FEB 84 1982

PERMITS: MARION CO. 1-11-81
 DIRM NO. 0085
 DEPTH-DRILLER 6007
 ELEV. 6005
 ELEV. 6007
 ELEV. 6005
 ELEV. 6007
 ELEV. 6005

DATE 11-11-81
 TIME 10:55 AM
 DRILLER T.D. DRILLER
 WITNESSED BY W. BRUBER

LOG NO. 1140
 CORING—DRILLER 1140 @ 1140
 SCALE—WELLS 6 3/4
 TYPE FLUID IN HOLE FINE LENTITE

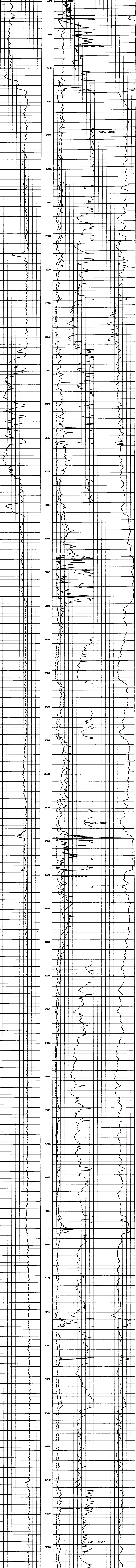
DATA USE:
 PH 11.1
 FLOW @ MASS. TEMP. 1.9 @ 2.4 F
 R @ MASS. TEMP. 2.75 @ 2.4 F
 R @ MASS. TEMP. 2.75 @ 2.4 F
 R @ MASS. TEMP. 2.75 @ 2.4 F
 R @ MASS. TEMP. 2.75 @ 2.4 F
 R @ MASS. TEMP. 2.75 @ 2.4 F

DATE USE:
 PH 11.1
 FLOW @ MASS. TEMP. 1.9 @ 2.4 F
 R @ MASS. TEMP. 2.75 @ 2.4 F
 R @ MASS. TEMP. 2.75 @ 2.4 F
 R @ MASS. TEMP. 2.75 @ 2.4 F
 R @ MASS. TEMP. 2.75 @ 2.4 F
 R @ MASS. TEMP. 2.75 @ 2.4 F

Service Ticket No. 057017 Remarks:
 Change in Mud Type or Additional Samples:
 Date: Sample Type:
 Depth—Driller:
 Type Fluid in Hole:
 Scale Changes:
 Type Log: Depth: Scale Up Hole: Scale Down Hole:

Equipment Data:
 Run No.: 018
 Tool Type and No.: NIG 98854
 Pad Type:
 Tool Position:
 Other:

Notes:
 2" = 100'



REICHOLD ENERGY CORPORATION
 BAGDANOFF 23-28
 ST. LOUIS (NORTH SALEM)
 MARION COUNTY, CALIFORNIA

T.D. LOGGED 6005
 T.D. DRILLER 6005
 T.D. WILEX 6007
 ELEV. 61. 183 KB. 193

