

RECEIVED: PLO
APR 17 1985
DEPT OF MINING
SACRAMENTO, CALIF.

COMPANY: ARCO EXPLORATION COMPANY
WELL: BANZER 834-16

FIELD: MISTILLICUM
COUNTY: COQUIMA
STATE: OREGON
NATION: USA
LOCATION: 90°N & 192°W OF SE COR

SECT: 16
TIPPI: EN
REF: NU

PARAMETER DATA:
ELEV. OF PERM. DATUM: 527.6 F
ELEV. MEASURED FROM: FB
M.L.O. MEASURED FROM: ND

DATE: 16 APR 85
RUN NO: 1

DEPTH-DRILLER: 4914.0 F
DEPTH-DRILLER: 4902.0 F
DEPTH-DRILLER: 4894.0 F
TOP LOG INTERVAL: 9644.0 F
CASSING-DRILLER: 966 F
CASSING-LOGGERS: 9 200 L.B.F.
CASSING-WPT: 0 7.44"
BIT SIZE: 4914 F
BIT DEPTH: 4914 F

DIERS SERVICES-
LOGGING UNIT
LOGGING UNIT
LOGGING UNIT
LOGGING UNIT

PROGRAM: 35-009-001
TYPE NO: 432414
SERIAL NO: 432414

TYPE FLUID IN HOLE: DECCO-DRIFAC
DENSITY: 12.0 LB/G
VISCOSITY: 44.0 C
PH: 4.0
FLUID LOSS: 4.0 CC
SOURCE OF SAMPLE: FLDH LINE
RHT: 3.170 DMM AT 83.0 DEGF
RHT: 2.650 DMM AT 64.0 DEGF
RHT: 1.070 DMM AT 67.0 DEGF
MEAS: MEAS
RHT AT BHT: 2.264 DMM AT 119. DEGF
RHT AT BHT: 1.605 DMM AT 119. DEGF
RHT AT BHT: 1.625 DMM AT 119. DEGF
TIME CIRC. STOPPED: 13:30 4/15
TIME LOGGER ON BTH: 15:00 4/16
MAX. REC. TEMP: 119.0 DEGF
LOGGING UNIT NO: 3126
LOGGING UNIT LOG: SACRAMENTO
RECORDED BY: MAYER
WITNESSED BY: BUIKEMA

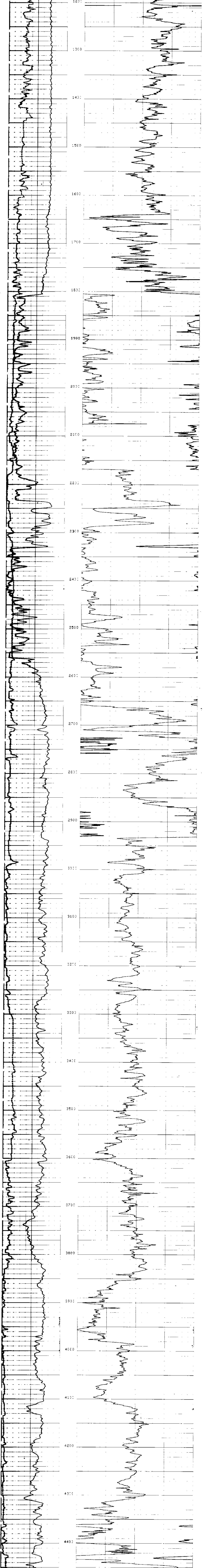
REMARKS:
CHLORIDES: 900PPM
FINS AND CREZS USED FOR CENTRALIZATION.

EQUIPMENT NUMBERS-
SLS 525 GUC 1921 MCD 1837 SLM 138

ALL INTERPRETATIONS ARE OPINIONS BASED ON INFERENCE FROM ELECTRICAL OR OTHER MEASUREMENTS AND WE CANNOT AND DO NOT GUARANTEE THE ACCURACY OR CORRECTNESS OF ANY INTERPRETATIONS AND WE SHALL NOT BE HELD RESPONSIBLE FOR ANY LOSS OR COSTS, DAMAGES OR EXPENSES INCURRED OR SUSTAINED BY ANYONE RESULTING FROM ANY INTERPRETATION MADE BY ANY OF OUR OFFICERS, AGENTS OR EMPLOYEES. THESE INTERPRETATIONS ARE ALSO SUBJECT TO OUR GENERAL TERMS AND CONDITIONS AS SET OUT IN OUR CURRENT PRICE SCHEDULE.

FILE 118 16-APP-85 17:21
DATA ACQUIRED 15-APP-85 19:21

COLLIM...
6.0000 SP (MV) 16.000
-100.0 0.0 150.00 50.000



FILE 118 16-APP-85 16:55
DATA ACQUIRED 15-APP-85 19:05

COLLIM...
6.0000 SP (MV) 16.000
-100.0 0.0 150.00 50.000

SENSOR MEASURE POINT TO TOOL ZERO

CBL	37.0	FEET	APPL	37.0	FEET
TT3	33.3	FEET	TT4	32.3	FEET
TT1	36.0	FEET	TT2	37.0	FEET
CAL1	56.1	FEET	SRAT	34.5	FEET
SPL	6.4	FEET	ILD	9.4	FEET
SP	2.5	FEET	ILW	7.7	FEET
TENS	3.5	FEET	OPAR	2.5	FEET
MOIS	28.8	FEET			

PARAMETERS

NAME	VALUE	UNIT	NAME	VALUE	UNIT
MSV1	WF1		DWC	16	
DSIN	5	UC	DCE	200	UC
CDTS	160.000		DWCD	512	
DTF	189.000	US/F	DTR	56.0000	US/F
SBR	1.00000	DMM	DGE	6.00000	MMHE
SPH	1.00000		DGC	6.70000	MMHE
PH	8.75000	IN	ILW	7.7	
DD	0.0	F	BHS	3PEP	
PP	NORM		DDZ	1.0	

TAPE NOT MADE