

COMPANY: ARCO EXPLORATION COMPANY WELL: BARNER 924-16 FIELD: HIST-HILDCAT COUNTY: COLUMBIA STATE: OREGON LOCATION: 90° N. & 192° W. DR SE COR SECT: 15 T1N1 6N RECEIVED: FILED APR 17 1985 LBY/CNL/NGT SHOT MNT CST	DEPTH-DRILLER: 4915.0 F DEPTH-LOGGER: 4902.0 F BIT LOG INTERVAL: 4895.0 F TOP LOG INTERVAL: 984.0 F CASING-DRILLER: 964 F CASING-LOGGER: 954 F HEIGHT: 36.00 LB/F BIT SIZE: 8 3/4" 4914 F	PERMANENT RETURN: 277.0 F ELEVATION: 520.0 F LEAD: 15.00 F DRG. MEASURED FROM: PERM. DATUM DLI 572.0 F	OTHER SERVICES: LBY/CNL/NGT DIGITAL SHOT MNT CST API SERIAL NO: 36-009-001
---	--	--	--

TYPE FLUID IN HOLE: DESCO-DRISPAK DENSITY: 10.2 LB/G VISCOSITY: 44.0 S PH: 9.5 FLUID LOSS: 4.8 CC SOURCE OF SAMPLE: FLUID LINE RNF: 3.170 DHMM AT 83.0 DEGF RMC: 2.850 DHMM AT 64.0 DEGF SOURCE RNF/RMC: 1.070 DHMM AT 67.0 DEGF RM AT BHT: 2.319 DHMM AT 116. DEGF RMF AT BHT: 1.645 DHMM AT 116. DEGF RMC AT BHT: .643 DHMM AT 116. DEGF	TIME CIRC. STOPPED: 13130 4/15 TIME LOGGER ON BTH.: 18145 4/15 MAX. REC. TEMP: 116.0 DEGF LOGGING UNIT NO: 8128 LOGGING UNIT LOC: SACRAMENTO RECORDED BY: HAYER WITNESSED BY: BUIKEWA
---	---

REMARKS:
 CHLORIDES: 900PPM
 FIM USED FOR CENTRALIZATION

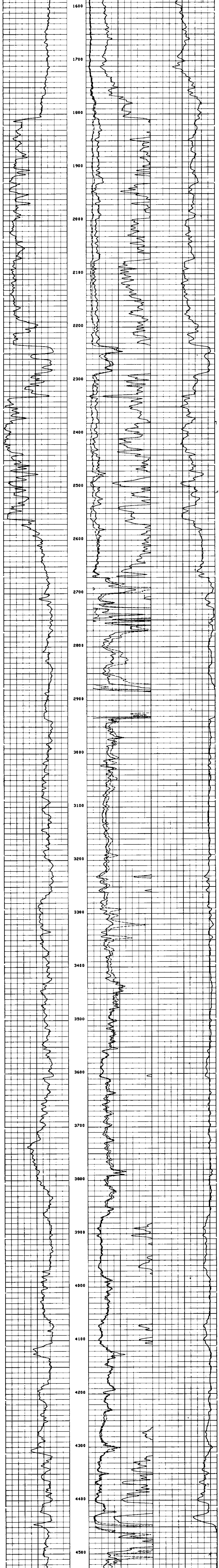
EQUIPMENT NUMBERS-
 BIS 567 DIC 342 IEM 304

ALL INTERPRETATIONS ARE OPINIONS BASED ON INFERENCE FROM ELECTRICAL OR OTHER MEASUREMENTS AND WE CANNOT, AND DO NOT GUARANTEE THE ACCURACY OR CORRECTNESS OF ANY INTERPRETATIONS, AND WE SHALL NOT, EXCEPT IN THE CASE OF GROSS OR WILLFUL NEGLIGENCE ON OUR PART, BE LIABLE OR RESPONSIBLE FOR ANY LOSS, COSTS, DAMAGES OR EXPENSES INCURRED OR SUSTAINED BY ANYONE RESULTING FROM ANY INTERPRETATION MADE BY ANY OF OUR OFFICERS, AGENTS OR EMPLOYEES. THESE INTERPRETATIONS ARE ALSO SUBJECT TO OUR GENERAL TERMS AND CONDITIONS AS SET OUT IN OUR CURRENT PRICE SCHEDULE.

FILE 14 15-APR-85 19147
 DATA ACQUIRED 00-00 08100

ILD (DHMM)	30.000
SFLA (DHMM)	6.0000
SFLA (DHMM)	30.000 1000.0
CILD (MMHO)	0.0

FILE 11 15-APR-85 19121



FILE 11 15-APR-85 18140

ILD (DHMM)	30.000
SFLA (DHMM)	6.0000
SFLA (DHMM)	30.000 1000.0
CILD (MMHO)	0.0

SENSOR MEASURE POINT TO TOOL ZERO

SFL	6.4 FEET	ILD	9.4 FEET
SP	2.5 FEET	ILM	5.7 FEET
TEMS	2.5 FEET	SPAR	2.5 FEET

PARAMETERS

NAME	VALUE	UNIT	NAME	VALUE	UNIT
SBR	1.00000	DHMM	DSEC	6.00000	MMHO
BHS	OPEN		ILM	6.70000	MMHO
SPBR	0.00000		TS	6.75000	IN