

COMPANY ARCO EXPLORATION COMPANY AREA MIST BASIN LOCATION 90°N & 1992'W OF SE CORN. Sec. 16; T6N; R5W; W6W COUNTY, STATE COLUMBIA CO., OR.

MEASUREMENTS: W. WEIGHT, F. FILTER RATE, V. FILTER RATE, FC. FILTER CAKE, Y. SAND IN W. MUD DATA: S. SALINITY, R. RESISTIVITY, F. FILTER RATE, BIT DATA: W. WEIGHT, F. FILTER RATE, FC. FILTER CAKE, Y. SAND IN W. LEGEND: CORE BIT, OTHER DATA, CONNECTION GAS, CORE BIT, OTHER DATA, CONNECTION GAS, CORE BIT, OTHER DATA, CONNECTION GAS.

DATE 3/27/85 TO 4/15/85 DEPTH 30' TO 4934' ENGINEERS R. BUTLER P. LITTLETON

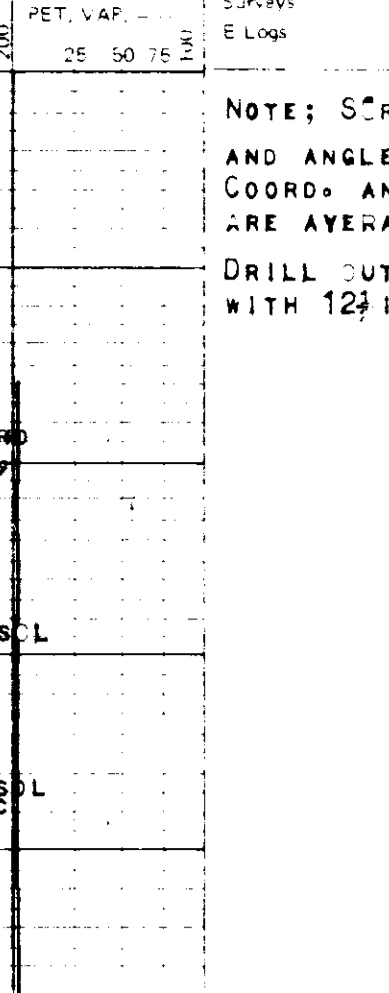


Table with columns: DEPTH, LITHOLOGY, MUD ANALYSIS, CUTTING ANALYSIS, REMARKS. Includes lithology descriptions like 'CLAY, MED. GRN. SPT, M/L' and 'CHROM=100SC1'. Includes mud analysis data for RET. VAP., BLENDER, GAS, and CUTTING ANALYSIS data for TOTAL GAS, RET. VAP., ELONG.

A/C - BANZER 34-16 SEC. 16; T6N; R5W; W6W COLUMBIA COUNTY, OREGON

Continuation of the well log table from 2100' to 4934' depth. Includes lithology descriptions like 'SAND, MED. GRN. VFM T. FMS' and 'SAND, MED. GRN. VFM T. FMS'. Includes mud analysis and cutting analysis data. Includes remarks such as 'STICK PIPE AT 2710', 'FREE POINT AT COLLARS AND FF PLUG AT 2206', and 'WIFE HOLE'.