

BHC ACOUSTILLOG

FILE NO. 2922
WELL NO. 21-100
COMPANY: FROD OIL & GAS COMPANY
WELL: BENSON NUMBER 14-1-84
FIELD: MISSI
COUNTY: COLUMBIA
STATE: OR.
LOCATION: 108° N. & 308° E. FROM SA CORNER.
OTHER SERVICE: DIFL, CR, CB
SECT: TAPPA, ROEAM

DATE: 10-14-88
LOGGING SYSTEM: RL
START TIME: 10:10
STOP TIME: 10:44
LOGGING FROM: 2594'
LOGGING TO: 2478'

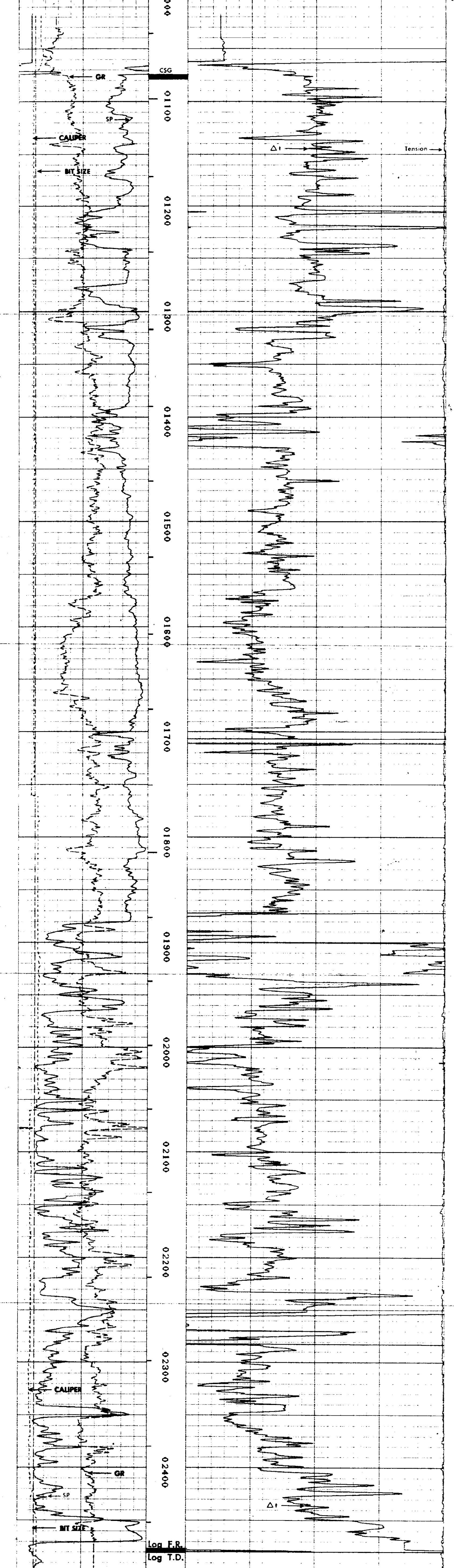
WELL: 21-100
WELL NO.: 21-100
WELL NAME: BENSON NUMBER 14-1-84
WELL TYPE: OIL
WELL STATUS: ACTIVE
WELL DEPTH: 2594'
WELL DIAMETER: 4 1/2"
WELL CEMENT: 100%
WELL ISOLATION: 100%
WELL PRODUCTION: 100%
WELL HISTORY: 100%

IN THE INTEREST OF OUR CUSTOMERS AND THE BHC ACOUSTILLOG SERVICE, WE REQUEST THAT YOU CONTACT US IMMEDIATELY IF YOU HAVE ANY INFORMATION THAT MAY AFFECT THE ACCURACY OF THIS LOG. WE WILL BE RESPONSIBLE FOR ANY EXPENSES INCURRED OR SUSTAINED BY THE CUSTOMER RESULTING FROM ANY INTERPRETATION MADE BY OUR EMPLOYEES.

REMARKS RUN (1)

EQUIPMENT DATA

RUN	TRIP	TOOL	SERIAL NO.	SERIES NO.	POSITION
1	1	DIFL	33304	1503	FREE
1	1	CR	79725	1504-1503	CENT
1	1	CB	50484	1505	FREE
1	1	CB	50484	4200	CENT



FINAL PRINT