

COMPANY MILLER DRILLING COMPANY
WELL BARRELL #1
FIELD WILDECAT
COUNTY POLK STATE OREGON

PERMANENT DRAIN: EG, KJ, KJ, KJ
LOG MEASURED FROM: 8 FT. ABOVE FORM DATUM
DATE: 8-28-79
RUN NO.: 0205
DEPTH - CENTER (SFL): 1005
DEPTH - TOP (SFL): 1005
DEPTH - TOP (INVERT): 1005
COATING - DRIVER: 1/2" @ 1/2"

LOCATION: 1/2" @ 85' 500'
OFFICIAL LOG REC'D: 500'
DATE: 8-28-79

Run No. 0205
Service Order No. 23102
Fluid Level FULL
Salinity ppm. cl
Speed F.P.M. 100

EQUIPMENT DATA
Panel No. DD-452
Cartridge No. DA-47
Sonde No. CA-273
Mem. Panel No.
G.R. Panel No.
G.R. Cart No.
Tape Recorder - (TTR)
Depth Encoder - (DRE)
Pressure Wheel - (CPM)
Type Centralizers
Stand Off - Inches

REMARKS
SP RECORDED 1.5 FT. SHALLOW

SCALE CHANGES
Type Log Depth Scale Up Hole Scale Down Hole

FOLD HERE
The well name, location and borehole reference data were furnished by the customer.

TIME
Log on Surface 1:30
Log on Bottom 1:30
Log on Top 1:30
Log on Invert 1:30
Log on 1000 1:30
Log on 900 1:30
Log on 800 1:30
Log on 700 1:30
Log on 600 1:30
Log on 500 1:30
Log on 400 1:30
Log on 300 1:30
Log on 200 1:30
Log on 100 1:30
Log on 0 1:30

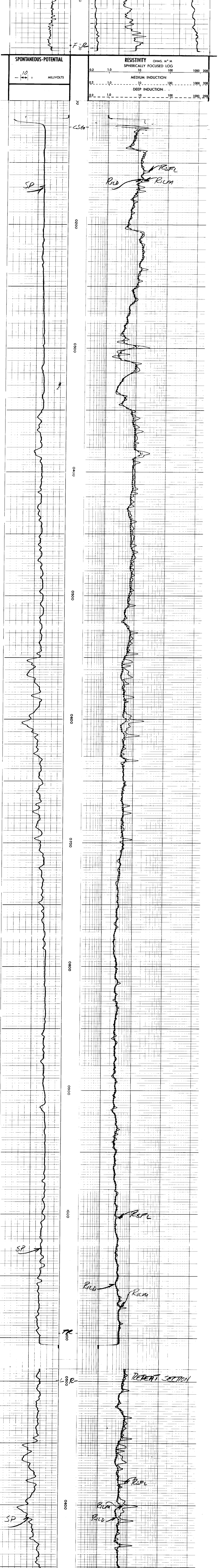
CALIBRATION DATA	
SBR	1.28
Sonde Error - ILM	1.27
Sonde Error - ILD	
G.R. BKG. - CFS	
G.R. Source - CFS	
S.E. Set In Hole - Depth	
S.E. Corr. - Hole Size	

LOGGING DATA	
SBR	1.28
Sonde Error Log - ILM	1.27
Sonde Error Log - ILD	
G.R. Scale per 100 Div.	100
G.R. - T.C. Log	

SPONTANEOUS POTENTIAL	
Panel No.	10
Scale	MILLIVOLTS

RESISTIVITY	
OHMS. M ² /M	
DEEP INDUCTION	
Spherically Focused Log	
AMP. Spherically Focused Log	

CONDUCTIVITY	
MILLIMHOS/M	
DEEP INDUCTION	



6 DIL AFTER SURVEY CALIBRATION
5
4