

COMPANY: REICHHOLD ENERGY CORPORATION
 WELL: BUSCH #14-15
 FIELD: MIST
 COUNTY: COLUMBIA
 STATE: OREGON
 LOCATION: 11874E & 3177N OF THE
 SEC: 15
 15 CORNER OF T15: 6N
 RGT: 5M

PERMANENT DATUM: GL
 ELEVATION: 529.0 F
 ELEV. OF PERM. DATUM: 529.0 F
 KB: 541.0 F
 LID MEASURED FROM: KB
 DF: 529.0 F
 DRLG. MEASURED FROM: KB
 GL: 529.0 F

DATE: 7 AUG 84
 RUN NO: 1

DEPTH-DRILLER: 2258.0 F
 DEPTH-LOGGER: 2258.0 F
 BIT: 2258.0 F
 TOP LOG INTERVAL: 400.0 F
 CASING-DRILLER: 406 F
 CASING-LOGGER: 8 5/8"
 BIT SIZE: 7 7/8"
 DEPTH: 2258 F

OTHER SERVICES-
 DIL-SFL
 HDT
 FDC-CNL-GR

PROGRAM
 TAPE NO:
 26.2
 SERVICE
 ORDER NO:
 432822

TYPE FLUID IN HOLE: GEL/LIGND
 DENSITY: 12.1 LB/G
 VISCOSITY: 76.0 S
 PH: 9.0
 FLUID LOSS: 4.4 C3
 SOURCE OF SAMPLE: FLOWLINE
 RM: 1.430 DHMM AT 88.0 DEGF
 RMF: 1.150 DHMM AT 86.0 DEGF
 RMC: 1.750 DHMM AT 85.0 DEGF
 SOURCE RMF/RMC: MEAS/MEAS
 RM AT BHT: 1.331 DHMM AT 95.0 DEGF
 RMF AT BHT: 1.048 DHMM AT 95.0 DEGF
 RMC AT BHT: 1.578 DHMM AT 95.0 DEGF

TIME CIRC. STOPPED: 1700
 TIME LOGGER ON BTM: 1

MAX. REC. TEMP: 95.0 DEGF

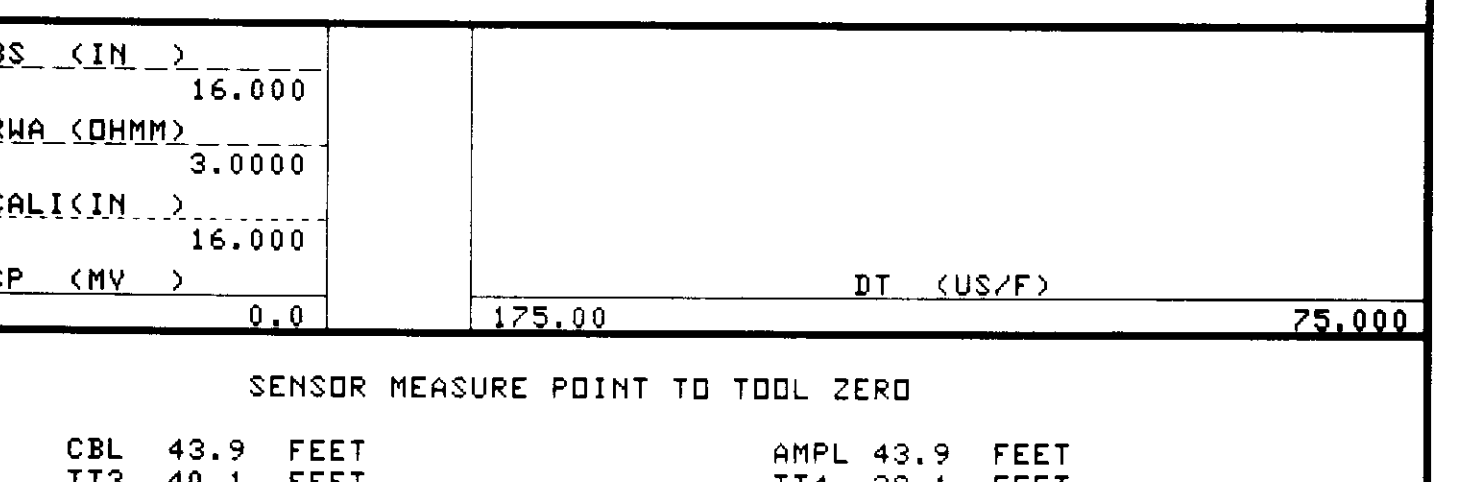
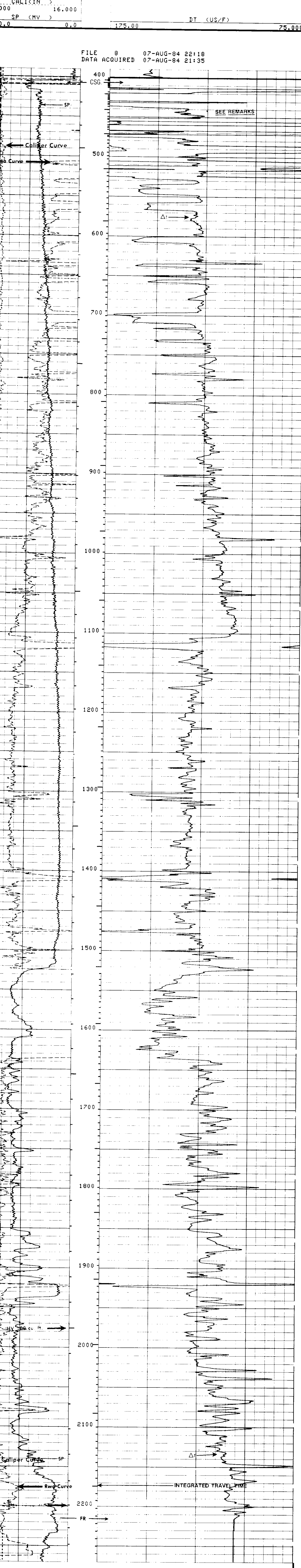
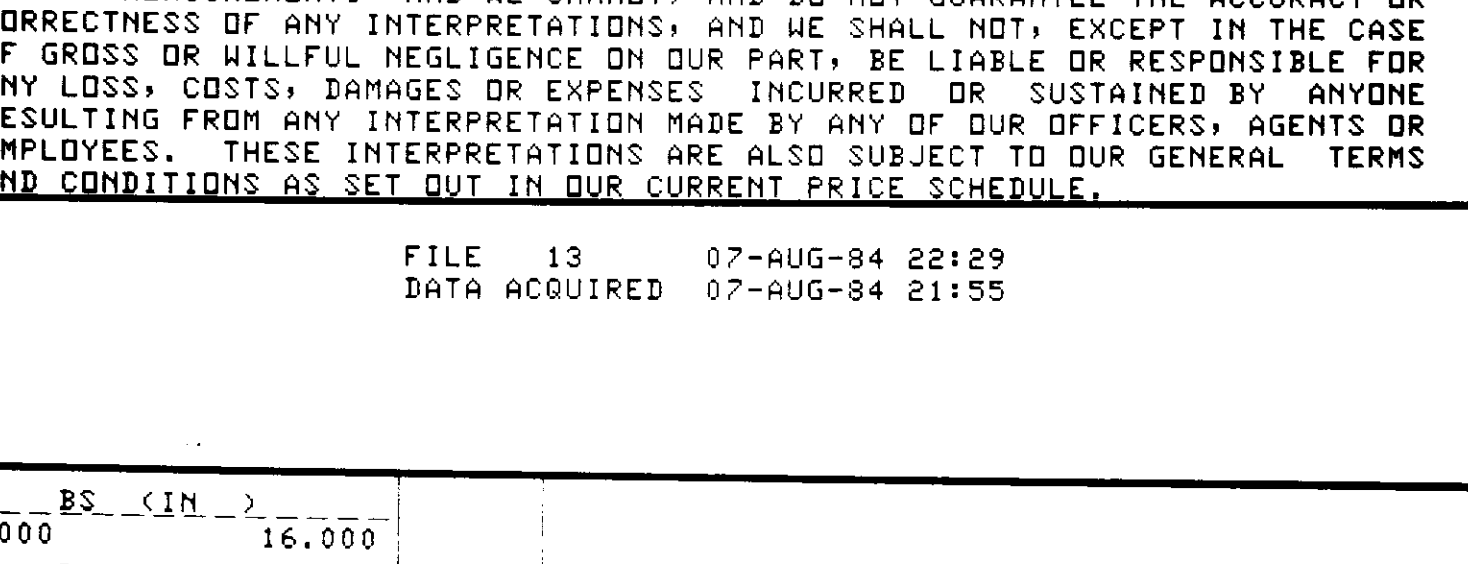
LOGGING UNIT NO: 8178
 LOGGING UNIT LDC: SACRAMENTO
 RECORDED BY: BENTLEY
 WITNESSED BY: ALGER

REMARKS:
 CYCLE SKIPPING ON DT ABOVE 600'. RE-LOGGED FROM 700'. SEE ATTACHED FILE BELOW.

EQUIPMENT NUMBERS-
 SLC 1422 DIC 47 MCD 1502 SLS RC 236
 SLC FA 1589 IEM BD 232 SLM DA 383

ALL INTERPRETATIONS ARE OPINIONS BASED ON INFERENCES FROM ELECTRICAL OR OTHER MEASUREMENTS AND WE CANNOT, AND DO NOT GUARANTEE THE ACCURACY OR CORRECTNESS OF ANY INTERPRETATIONS, AND WE SHALL NOT, EXCEPT IN THE CASE OF GROSS OR WILLFUL NEGLIGENCE ON OUR PART, BE LIABLE OR RESPONSIBLE FOR ANY LOSS, COSTS, DAMAGES OR EXPENSES INCURRED OR SUSTAINED BY ANYONE RESULTING FROM ANY INTERPRETATION MADE BY ANY OF OUR OFFICERS, AGENTS OR EMPLOYEES. THESE INTERPRETATIONS ARE ALSO SUBJECT TO OUR GENERAL TERMS AND CONDITIONS AS SET OUT IN OUR CURRENT PRICE SCHEDULE.

FILE 13 07-AUG-84 22:29
 DATA ACQUIRED 07-AUG-84 21:55



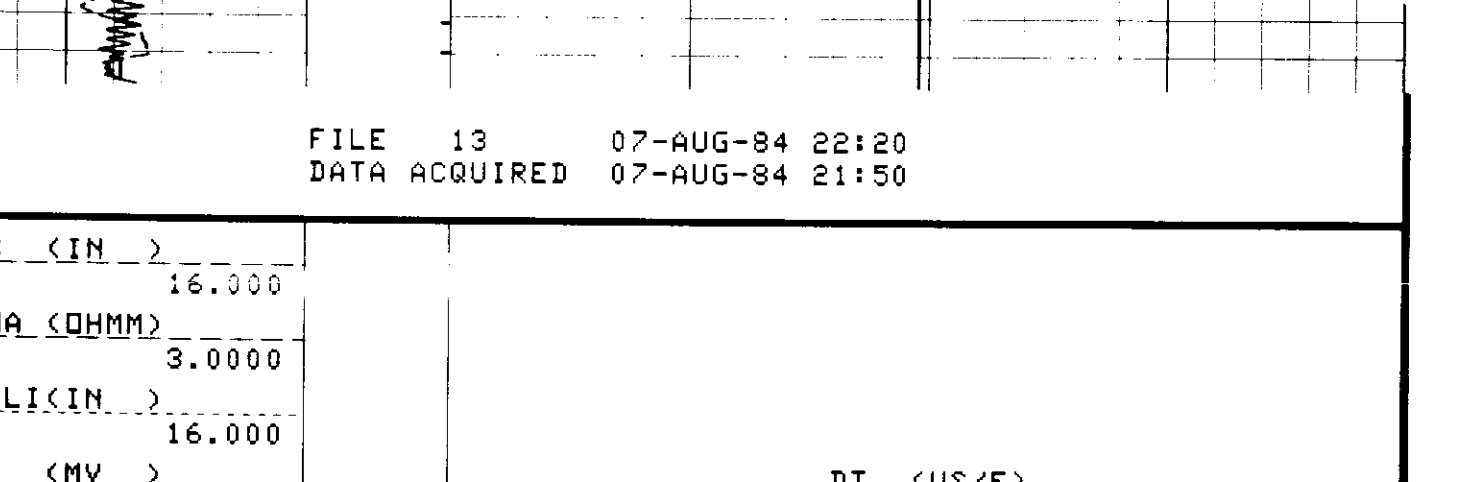
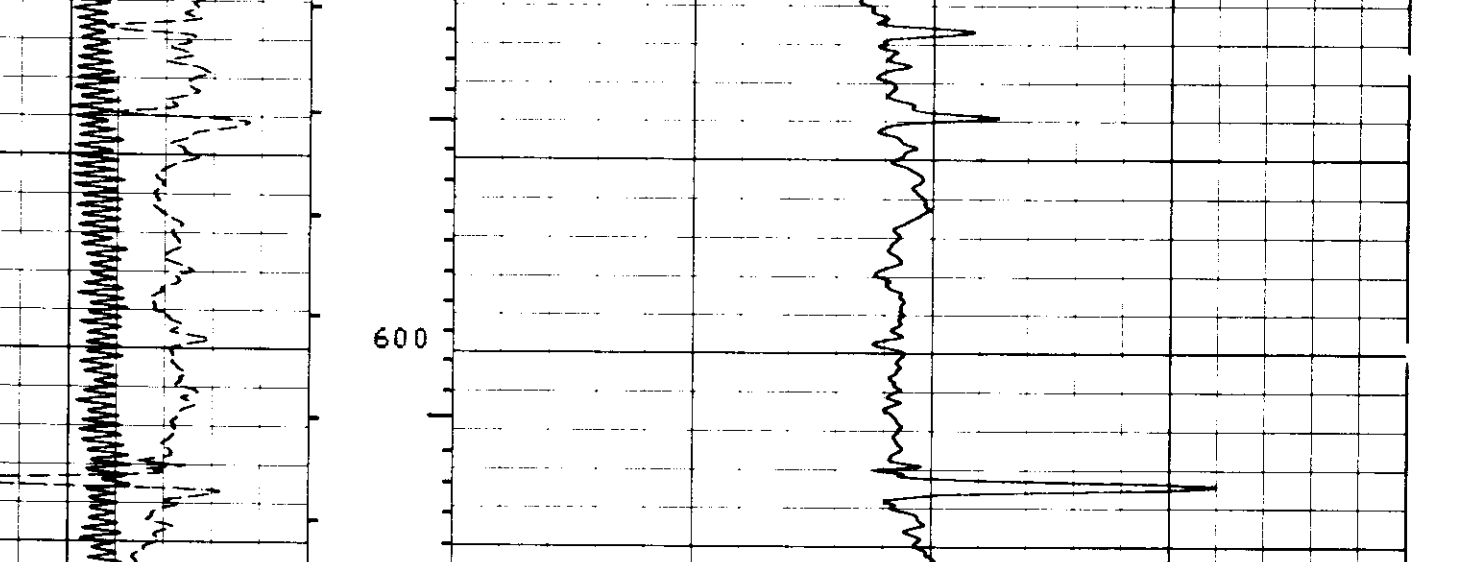
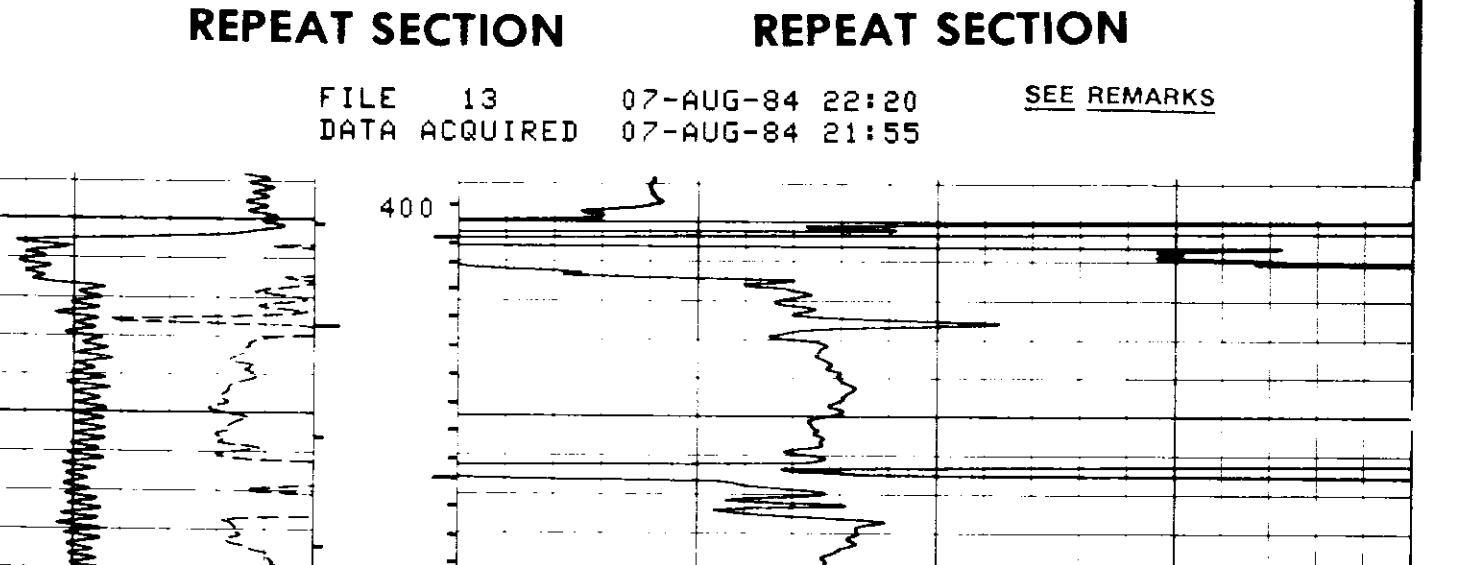
SENSOR MEASURE POINT TO TOOL ZERO

CBT 43.9 FEET	AMPL 43.9 FEET
TT3 40.1 FEET	TT4 39.1 FEET
TT1 42.9 FEET	TT2 43.9 FEET
CALI 31.8 FEET	SRAT 41.4 FEET
SFL 6.4 FEET	ILD 9.4 FEET
SP 2.5 FEET	ILM 5.7 FEET
TENS 2.5 FEET	SPAR 2.5 FEET
NOIS 35.6 FEET	

PARAMETERS

NAME	VALUE	UNIT	NAME	VALUE	UNIT
HSV1	HF1		DWS	16	
DSIN	5	US	DDEL	200	US
CDTS	100.000		DHCO	512	
DTF	189.000	US/F	DTM	56.0000	US/F
SBR	1.00000	DHMM	DSEC	4.00000	MMHO
FPHI	SPHI		MSEC	6.20000	MMHO
FNUM	.620000		FEXP	2.15000	
BS	7.87500	IN	BHS	OPEN	
PP	NDRM		DD	0.0	F

TAPE NOT MADE



SENSOR MEASURE POINT TO TOOL ZERO

CBL 43.9 FEET	AMPL 43.9 FEET
TT3 40.1 FEET	TT4 39.1 FEET
TT1 42.9 FEET	TT2 43.9 FEET
CALI 31.8 FEET	SRAT 41.4 FEET
SFL 6.4 FEET	ILD 9.4 FEET
SP 2.5 FEET	ILM 5.7 FEET
TENS 2.5 FEET	SPAR 2.5 FEET
NOIS 35.6 FEET	

PARAMETERS

NAME	VALUE	UNIT	NAME	VALUE	UNIT
HSV1	HF1		DWS	16	
DSIN	5	US	DDEL	200	US
CDTS	100.000		DHCO	512	
DTF	189.000	US/F	DTM	56.0000	US/F
SBR	1.00000	DHMM	DSEC	4.00000	MMHO
FPHI	SPHI		MSEC	6.20000	MMHO
FNUM	.620000		FEXP	2.15000	
BS	7.87500	IN	BHS	OPEN	
PP	NDRM		DD	0.0	F

TAPE NOT MADE