

DUAL SPACING THERMAL NEUTRON DECAY TIME

Schlumberger

COMPANY: BELCHER OIL CO. - COLBERT TOWN

WELL: COLUMBIA #1
FIELD: METALIE HAVEN

COUNTY: COLUMBIA
STATE: MISSISSIPPI

RECORDING DEPT: REICHHOLD ENERGY

WELL LOCATION: COLUMBIA #1
RECORDING DEPT: REICHHOLD ENERGY

PERMITS: 11-68-82
Elev. 1021
Elev. 1027

DATE: 7/1/73
TIME: 11:25 AM

LOGGING UNIT: THREE
LOGGING UNIT: 5775

LOGGING UNIT: 4605
LOGGING UNIT: 315

LOGGING UNIT: 405
LOGGING UNIT: 405

LOGGING UNIT: 405
LOGGING UNIT: 405

LOGGING UNIT: 405
LOGGING UNIT: 405

WELL SKETCH

Run No. 056
Service Order No. 183751
Fluid Type in Top-Cap Annulus GAS
Annulus Fluid Salinity, ppm No. Cl
Estimated Cement Top
Casing Collars Recorded 23 ft

REMARKS

EQUIPMENT DATA

LOGGING UNIT: THREE
LOGGING UNIT: 5775
LOGGING UNIT: 4605
LOGGING UNIT: 315
LOGGING UNIT: 405
LOGGING UNIT: 405
LOGGING UNIT: 405
LOGGING UNIT: 405

CALIBRATION DATA

Run No. THREE
BKG. CPS 60
Source CPS 360
Tc 2

NEAR
BKG. CPS 480
Source CPS 0

TYPE LOG

DATE: 7/1/73
WELL CONDITION: SHUT
OIL RATE (SURF): 0
GAS RATE: 0
WATER RATE: 300
WELLHEAD PRESSURE: 2477
BOTTOM LOGGED INTERVAL: 1000
TOP LOGGED INTERVAL: 900
SPEED: 1800
TIME CONSTANT: 472

BACKGROUND: FAR cps

GAMMA RAY: API UNITS

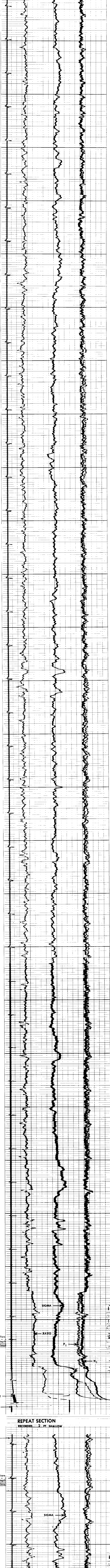
QUALITY

NEUTRON CAPTURE CROSS SECTION Σ_c capture units (cu) $10^{-6} \text{cm}^2/\text{cm}^3$

RATIO

Casing Collars
Recorded collars
Memorized collars
Corrected depth
Recorded collars

FAR cps
NEAR cps

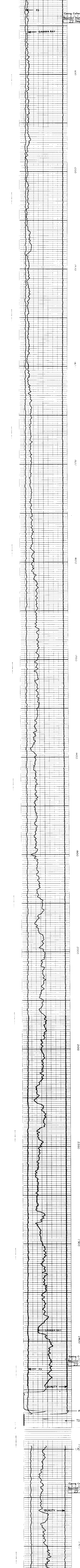


REPEAT SECTION RECORDED - 2 FT. SHALLOW

Casing Collars
Recorded Depth 23' Deep

SIGMA

RATIO



REPEAT SECTION RECORDED - 2 FT. SHALLOW

Casing Collars
Recorded Depth 23' Deep

QUALITY

GAMMA RAY

LOGGING UNIT: THREE
LOGGING UNIT: 5775
LOGGING UNIT: 4605
LOGGING UNIT: 315
LOGGING UNIT: 405
LOGGING UNIT: 405
LOGGING UNIT: 405
LOGGING UNIT: 405

DATE: 7/1/73
WELL CONDITION: SHUT
OIL RATE (SURF): 0
GAS RATE: 0
WATER RATE: 300
WELLHEAD PRESSURE: 2477
BOTTOM LOGGED INTERVAL: 1000
TOP LOGGED INTERVAL: 900
SPEED: 1800
TIME CONSTANT: 472

BACKGROUND: FAR cps

GAMMA RAY: API UNITS

QUALITY

F3

GAMMA RAY

QUALITY

F3

GAMMA RAY

QUALITY

F3

GAMMA RAY

QUALITY

F3

GAMMA RAY

QUALITY

F3

GAMMA RAY

QUALITY

F3

GAMMA RAY

QUALITY

F3

GAMMA RAY

QUALITY

F3

GAMMA RAY

QUALITY

F3

GAMMA RAY

QUALITY

F3

GAMMA RAY

QUALITY

F3

GAMMA RAY

QUALITY

F3

GAMMA RAY

QUALITY

F3